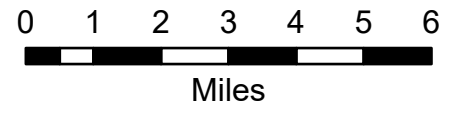


IAP Map Index

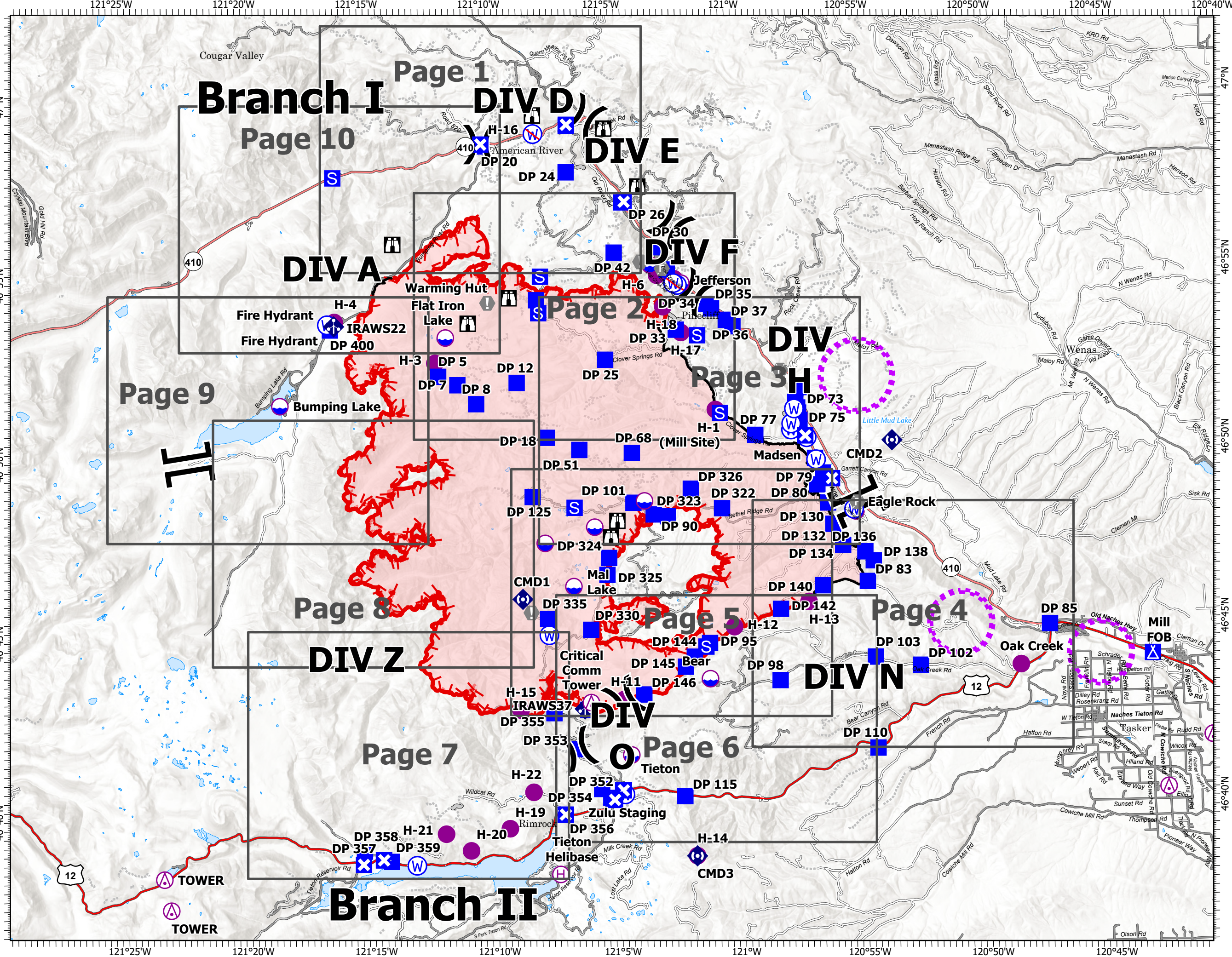
Schneider Springs
WA-OWF-000453

9/7/21

92,775 acres at 9/5/21 2030



- Aerial Hazard
- Dip Site
- Helispot
- Helibase
- Division Break
- Branch Break
- Drop Point
- Closure
- Camp
- Staging Area
- Lookout
- Value at Risk
- Fire Station
- Mobile Weather Unit
- Repeater
- Water Source
- Restricted Water Source
- Access or Improved Road
- Aerial Hazard
- UAS Launch and Recovery Zone
- Fire Edge
- Contained Line
- Wildfire Daily Fire Perimeter
- Grid Index



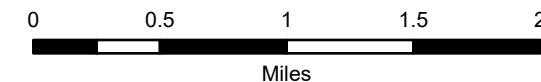
IAP Map

Schneider Springs
WA-OWF-000453

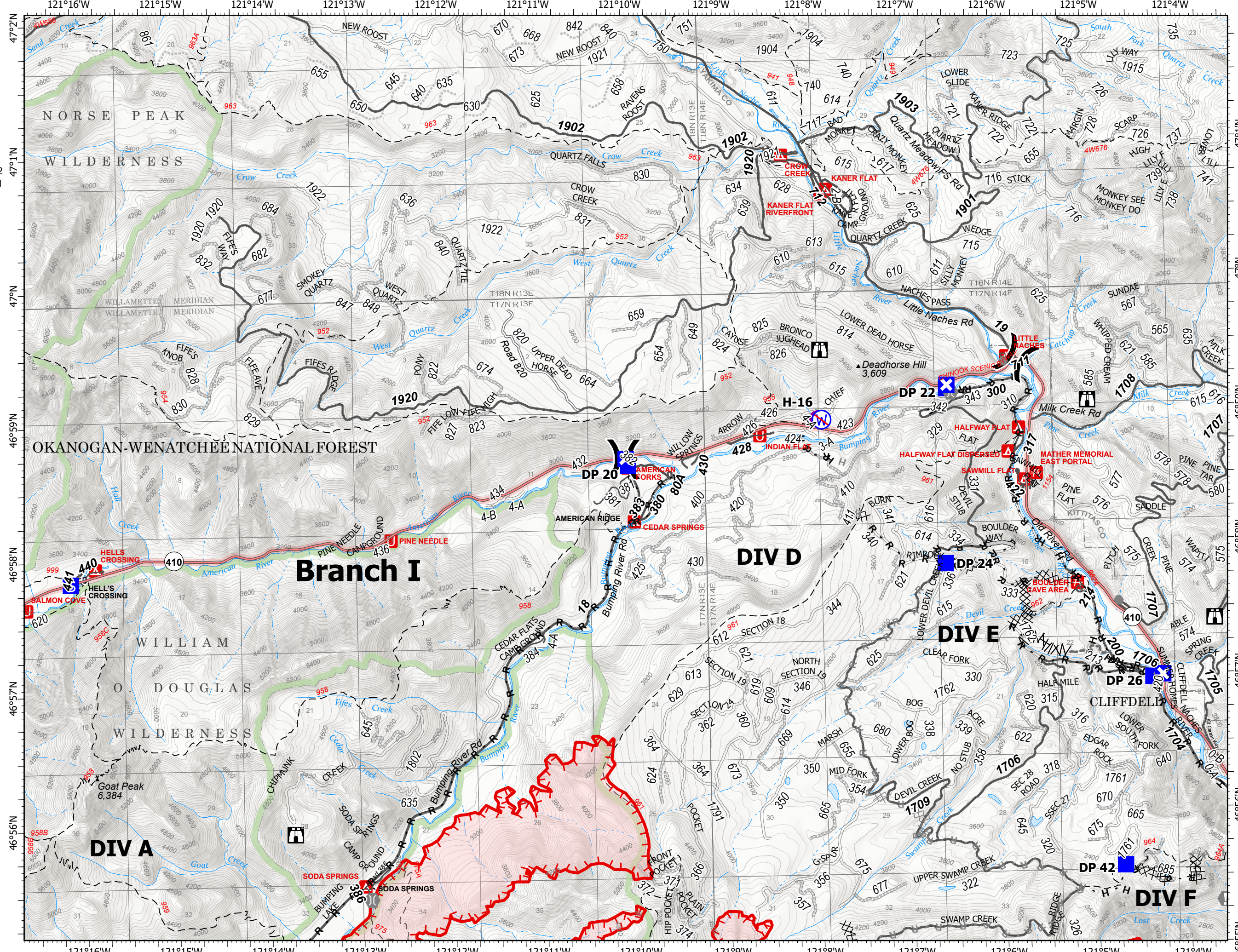
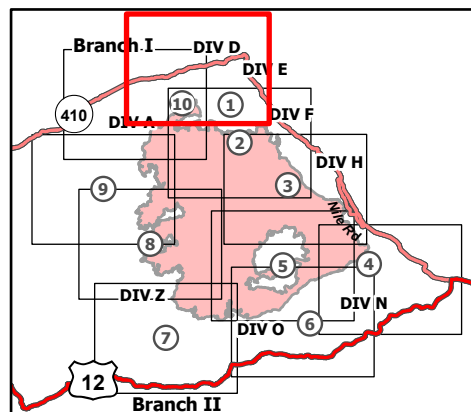
9/7/21

92,775 acres at 9/5/21 2030

Page 1 of 10



- Helispot
-) Division Break
- Drop Point
- ⊠ Closure
- Ⓢ Staging Area
- 🏠 Lookout
- ⚠ Value at Risk
- Other
- 🌉 Bridge
- Ⓜ Restricted Water Source
- ⓧⓧ Completed Dozer Line
- Ⓜ Completed Fuel Break
- H - Completed Hand Line
- R - Completed Road as Line
- ⓧⓧ Planned Dozer Line
- H - Planned Hand Line
- R - Planned Road as Line
- Access or Improved Road
- - - Other
- 🔴 Fire Edge
- 🟢 Administrative FS Boundary
- 🟢 FS Wilderness Boundary
- 🟡 Wildfire Daily Fire Perimeter



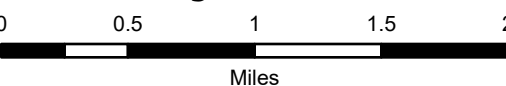
IAP Map

Schneider Springs
WA-OWF-000453

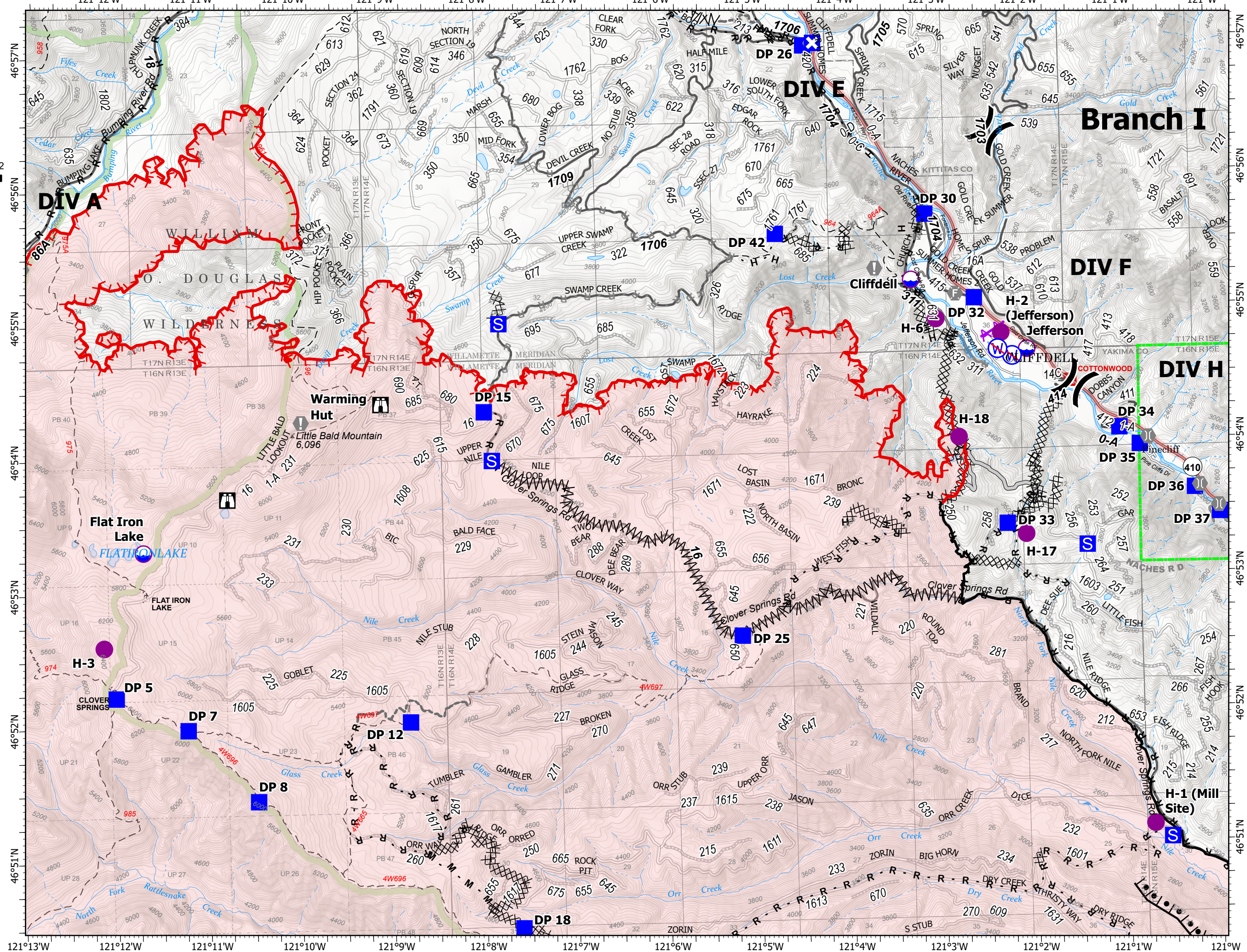
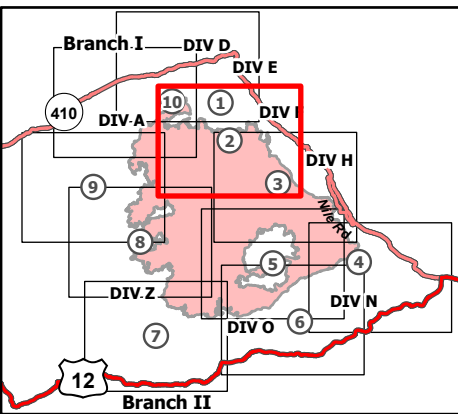
9/7/21

92,775 acres at 9/5/21 2030

Page 2 of 10



- Dip Site
- Helispot
- Division Break
- Drop Point
- Closure
- Staging Area
- Lookout
- Value at Risk
- Fire Station
- Bridge
- Restricted Water Source
- Completed Burnout
- Completed Dozer Line
- Completed Fuel Break
- Completed Hand Line
- Completed Mixed Construction Line
- Completed Road as Line
- Planned Dozer Line
- Planned Hand Line
- Planned Road as Line
- Access or Improved Road
- Other
- Aerial Hazard
- Fire Edge
- Contained Line
- Administrative FS Boundary
- FS Wilderness Boundary
- Wildfire Daily Fire Perimeter



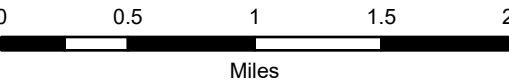
IAP Map

Schneider Springs
WA-OWF-000453

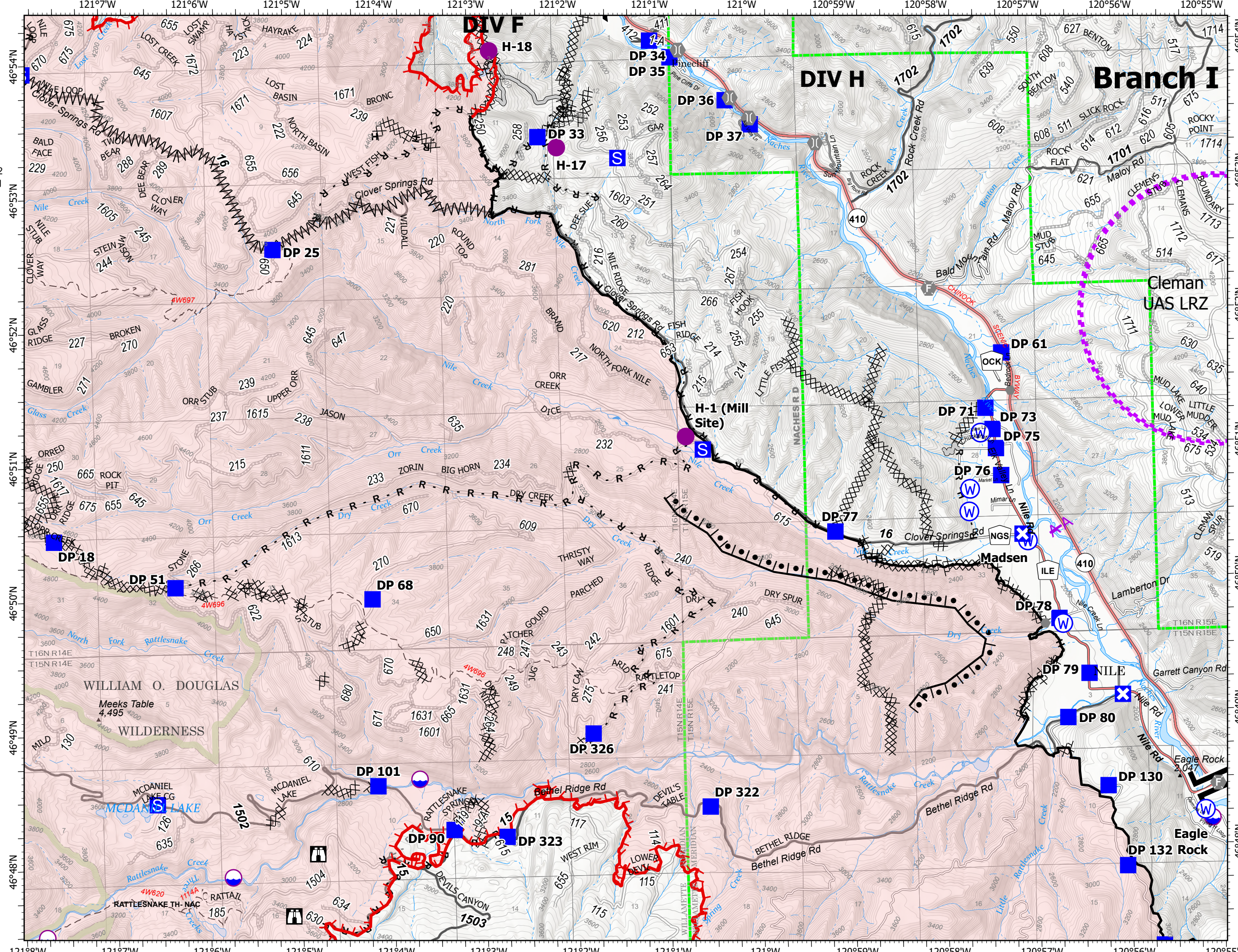
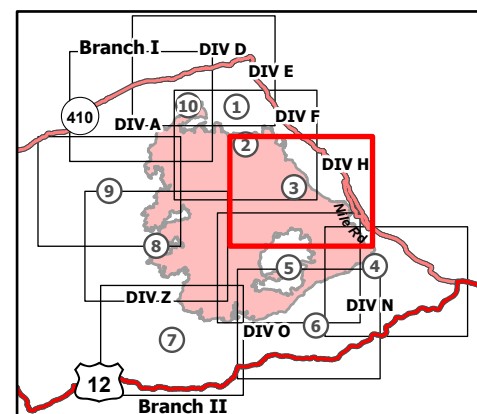
9/7/21

92,775 acres at 9/5/21 2030

Page 3 of 10



- Dip Site
- Helispot
- X Division Break
- || Branch Break
- Drop Point
- ⊠ Closure
- Staging Area
- ⏏ Lookout
- Other
- ⦿ Fire Station
- ⌒ Bridge
- ⊙ Water Source
- Completed Burnout
- XX Completed Dozer Line
- ∩ Completed Fuel Break
- H Completed Hand Line
- M Completed Mixed Construction Line
- R Completed Road as Line
- R Planned Road as Line
- Access or Improved Road
- ⚡ Aerial Hazard
- UAS Launch and Recovery Zone
- Fire Edge
- Contained Line
- Administrative FS Boundary
- FS Wilderness Boundary
- Wildfire Daily Fire Perimeter



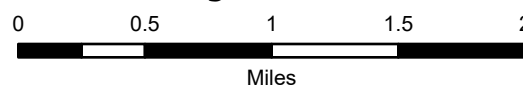
IAP Map

Schneider Springs
WA-OWF-000453

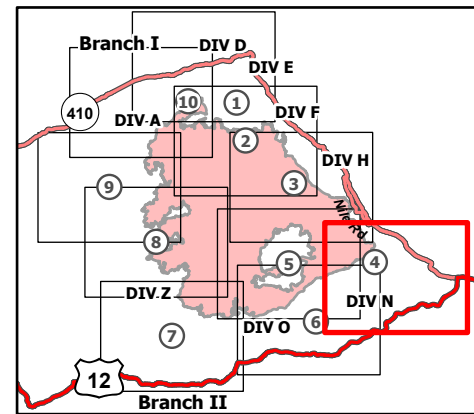
9/7/21

92,775 acres at 9/5/21 2030

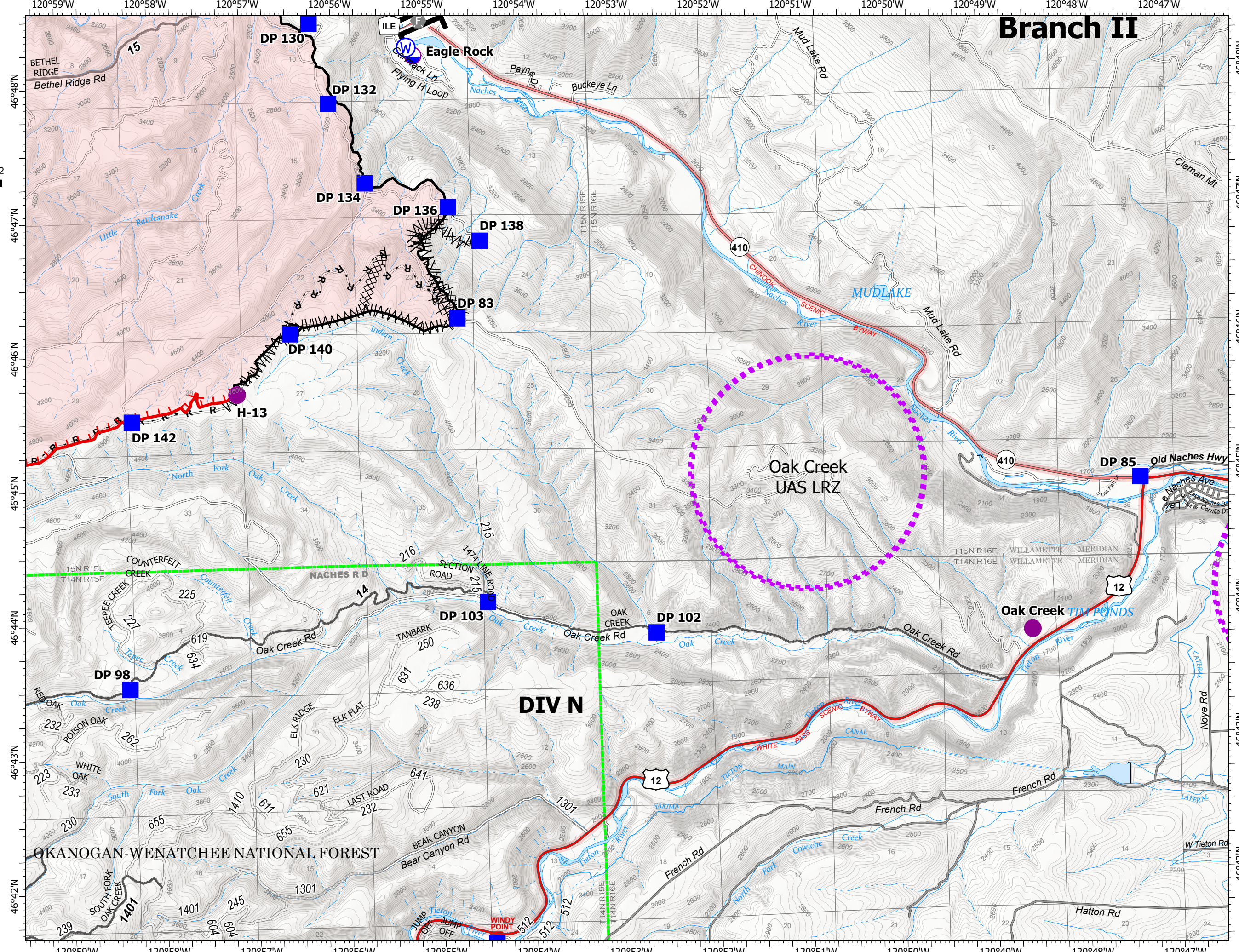
Page 4 of 10



- Dip Site
- Helispot
- Branch Break
- Drop Point
- Fire Station
- Water Source
- Completed Dozer Line
- Completed Fuel Break
- Completed Road as Line
- UAS Launch and Recovery Zone
- Fire Edge
- Contained Line
- Administrative FS Boundary
- Wildfire Daily Fire Perimeter



9/6/2021 2115
Acres from IR
North American 1983 Datum.
Lat/Long Grid



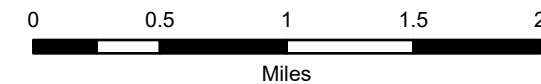
IAP Map

Schneider Springs
WA-OWF-000453

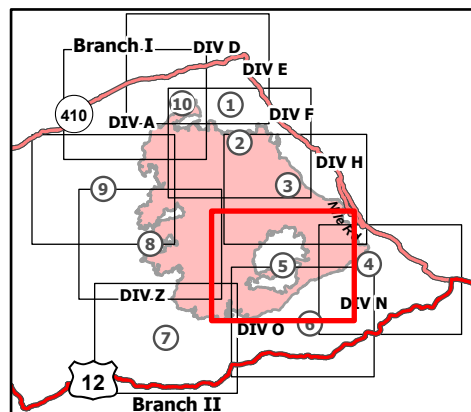
9/7/21

92,775 acres at 9/5/21 2030

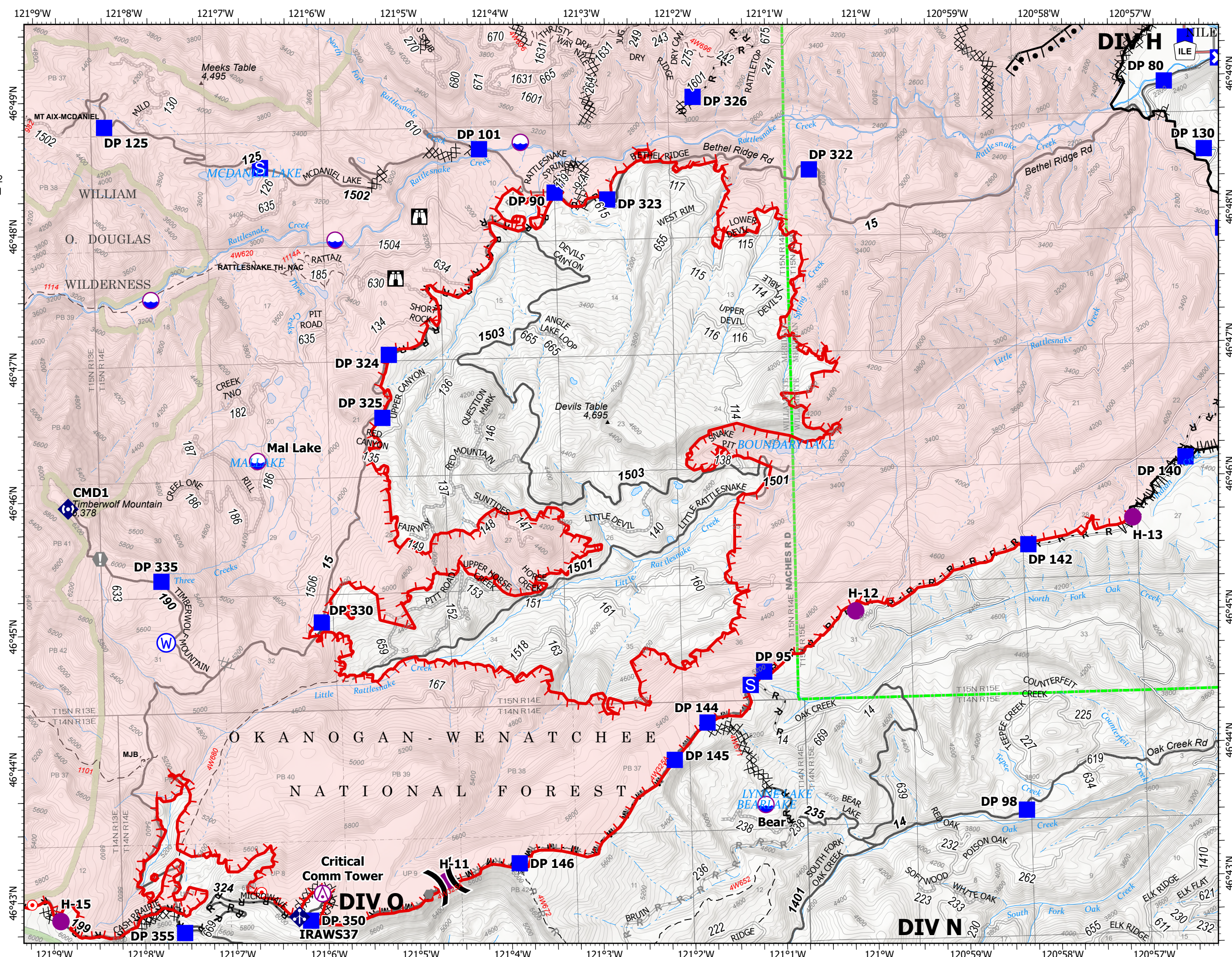
Page 5 of 10



- ⊗ Aerial Hazard
- ⊙ Dip Site
- Helispot
-) Division Break
- Drop Point
- ⊠ Closure
- ⊡ Staging Area
- ⊠ Lookout
- ⊙ Hot Spot - Spot Fire
- ⊙ Value at Risk
- Other
- ⊠ Mobile Weather Unit
- ⊠ Repeater
- ⊙ Water Source
- ⊠ Completed Burnout
- ⊠ Completed Dozer Line
- ⊠ Completed Fuel Break
- ⊠ Completed Hand Line
- ⊠ Completed Mixed Construction Line
- ⊠ Completed Road as Line
- ⊠ Planned Dozer Line
- ⊠ Planned Road as Line
- ⊠ Other
- ⊠ Fire Edge
- ⊠ Contained Line
- ⊠ Administrative FS Boundary
- ⊠ FS Wilderness Boundary
- ⊠ Wildfire Daily Fire Perimeter



9/6/2021 2115
Acres from IR
North American 1983 Datum.
Lat/Long Grid



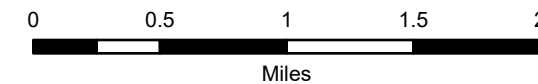
IAP Map

Schneider Springs
WA-OWF-000453

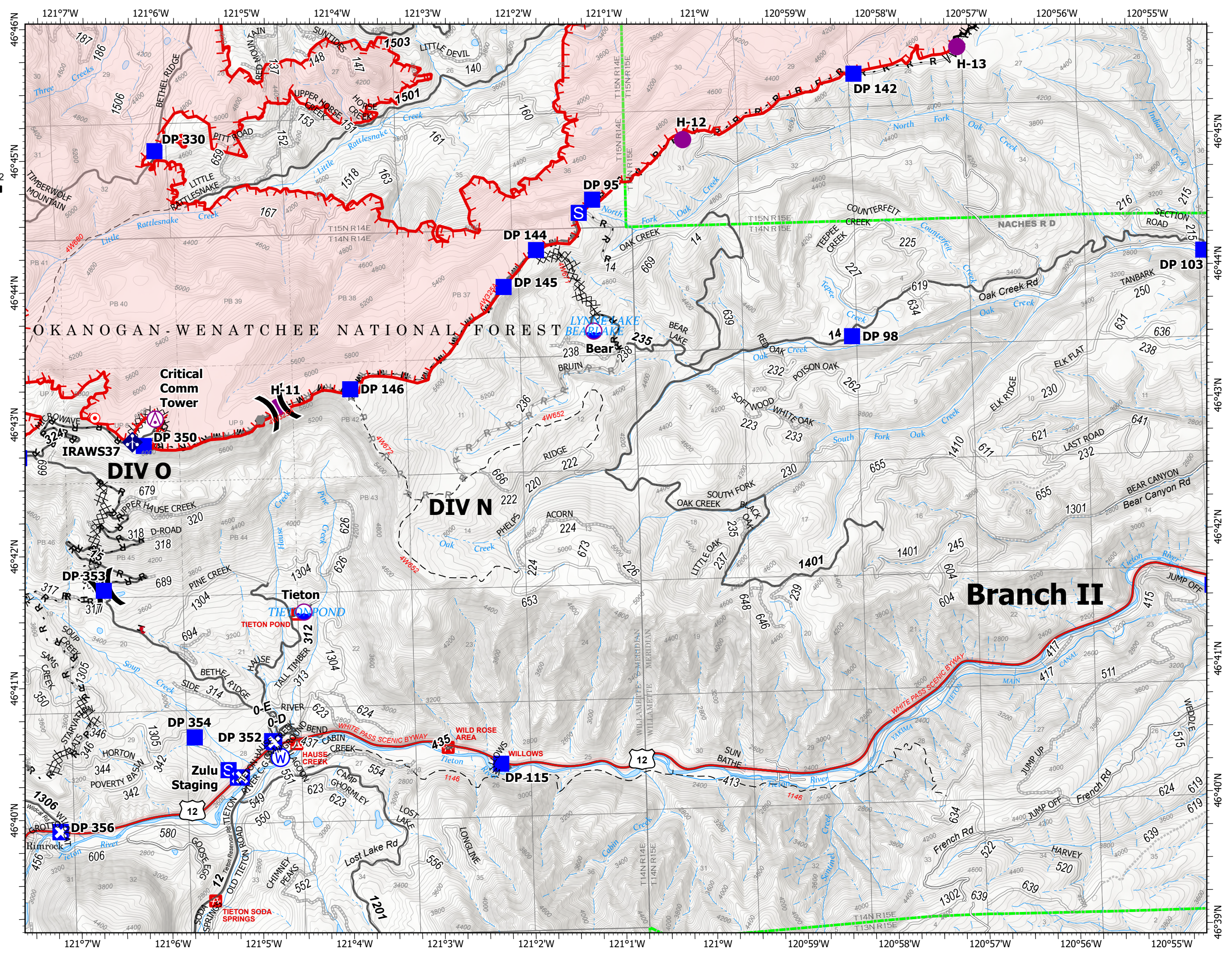
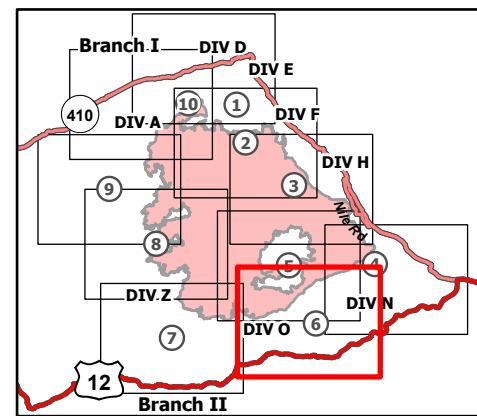
9/7/21

92,775 acres at 9/5/21 2030

Page 6 of 10



- ⊙ Aerial Hazard
- Dip Site
- Helispot
-) Division Break
- Drop Point
- ⊠ Closure
- ⊡ Staging Area
- ⊙ Hot Spot - Spot Fire
- Other
- ⊡ Mobile Weather Unit
- ⊙ Water Source
- ⊠ Completed Dozer Line
- ⊡ Completed Fuel Break
- H Completed Hand Line
- M Completed Mixed Construction Line
- R Completed Road as Line
- ⊠ Planned Dozer Line
- H Planned Hand Line
- R Planned Road as Line
- - - Fence
- - - Other
- ▬ Fire Edge
- ▬ Contained Line
- ▬ Administrative FS Boundary
- ▬ Wildfire Daily Fire Perimeter



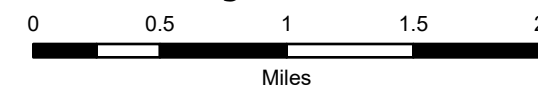
IAP Map

Schneider Springs
WA-OWF-000453

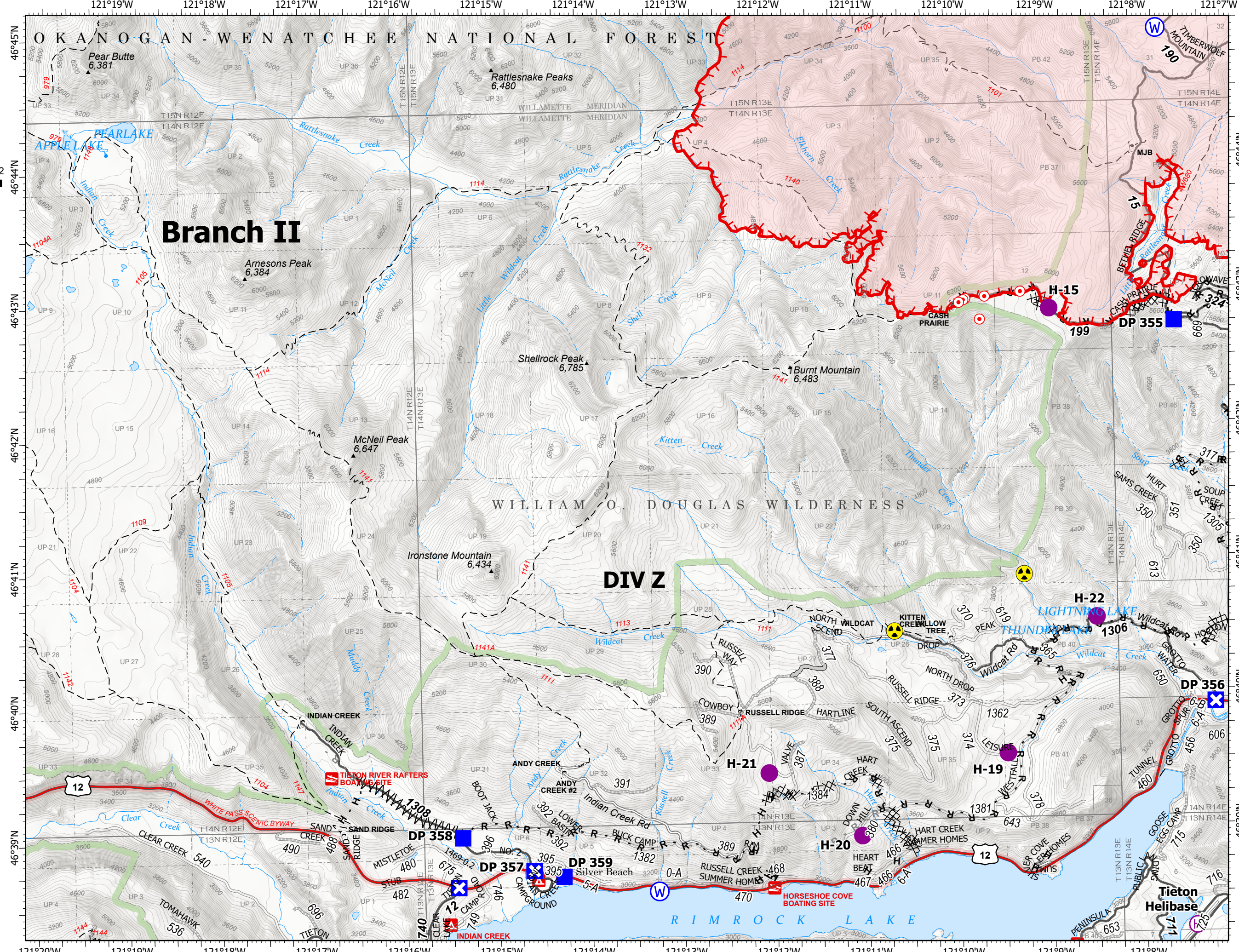
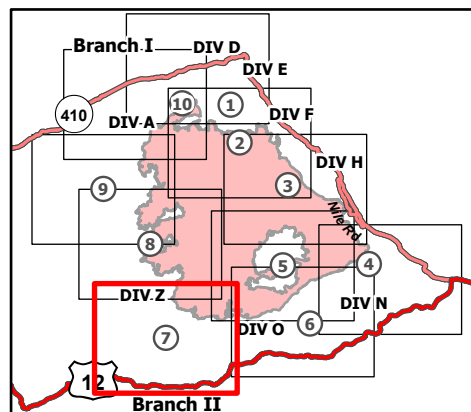
9/7/21

92,775 acres at 9/5/21 2030

Page 7 of 10



- Helispot
- ⊕ Helibase
- Drop Point
- ⊗ Closure
- ⊙ Hot Spot - Spot Fire
- ☠ Hazard
- ⊙ Water Source
- ⊗⊗ Completed Dozer Line
- ⊗ Completed Fuel Break
- H Completed Hand Line
- R Completed Road as Line
- ⊗⊗ Planned Dozer Line
- R Planned Road as Line
- Access or Improved Road
- - - Other
- ┌ Fire Edge
- ▭ Administrative FS Boundary
- ▭ FS Wilderness Boundary
- ▭ Wildfire Daily Fire Perimeter



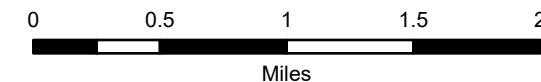
IAP Map

Schneider Springs
WA-OWF-000453

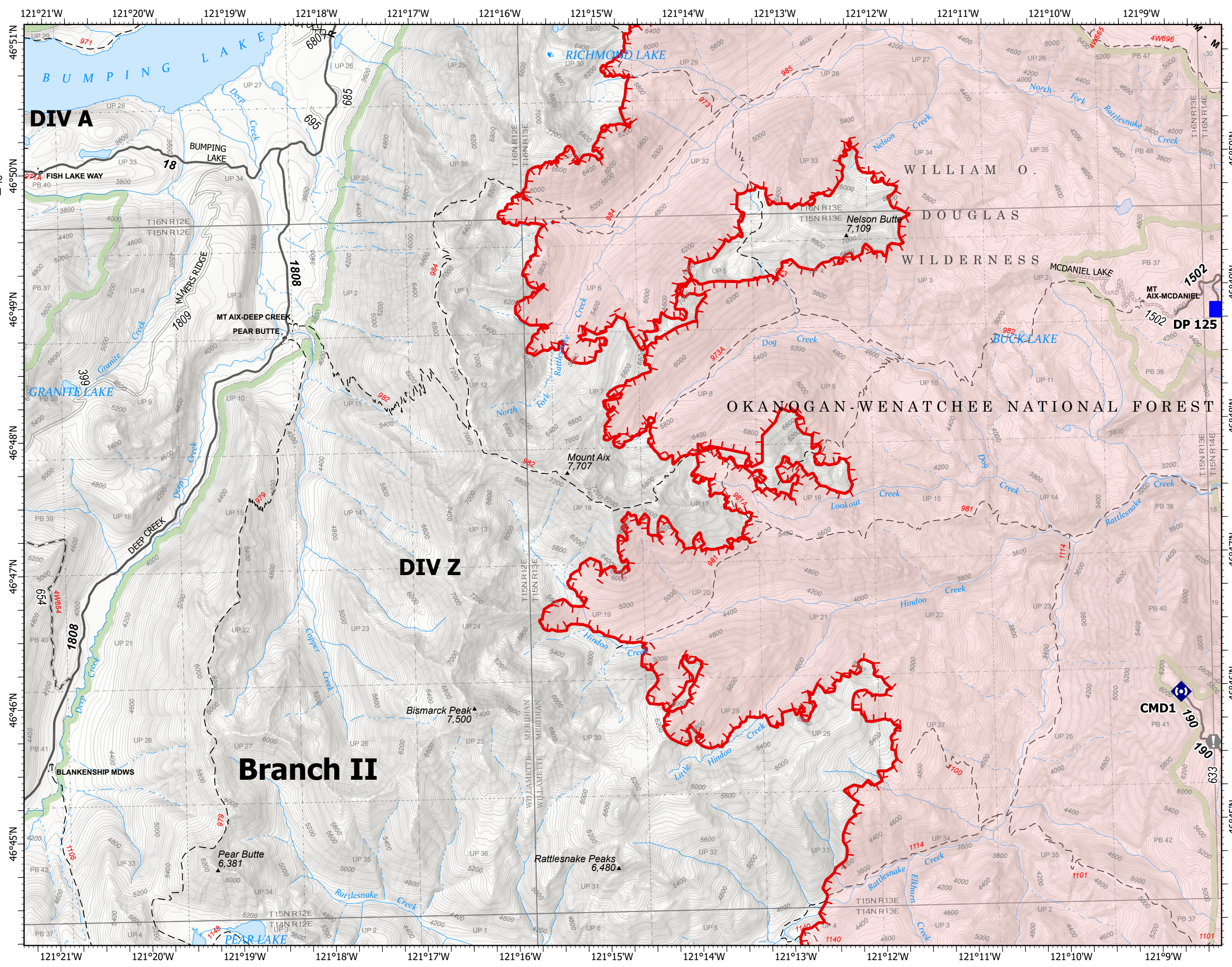
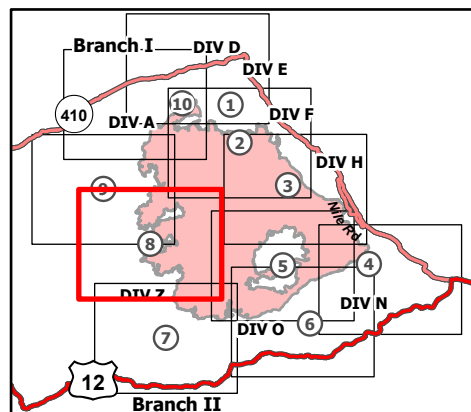
9/7/21

92,775 acres at 9/5/21 2030

Page 8 of 10



- Drop Point
- Value at Risk
- Repeater
- Completed Dozer Line
- Completed Mixed Construction Line
- Completed Road as Line
- Planned Hand Line
- Fire Edge
- Administrative FS Boundary
- FS Wilderness Boundary
- Wildfire Daily Fire Perimeter



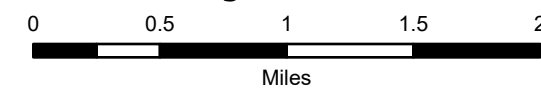
IAP Map

Schneider Springs
WA-OWF-000453

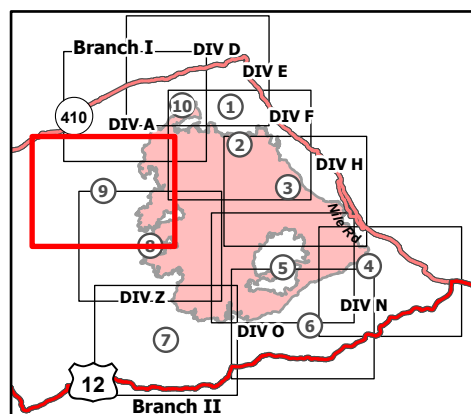
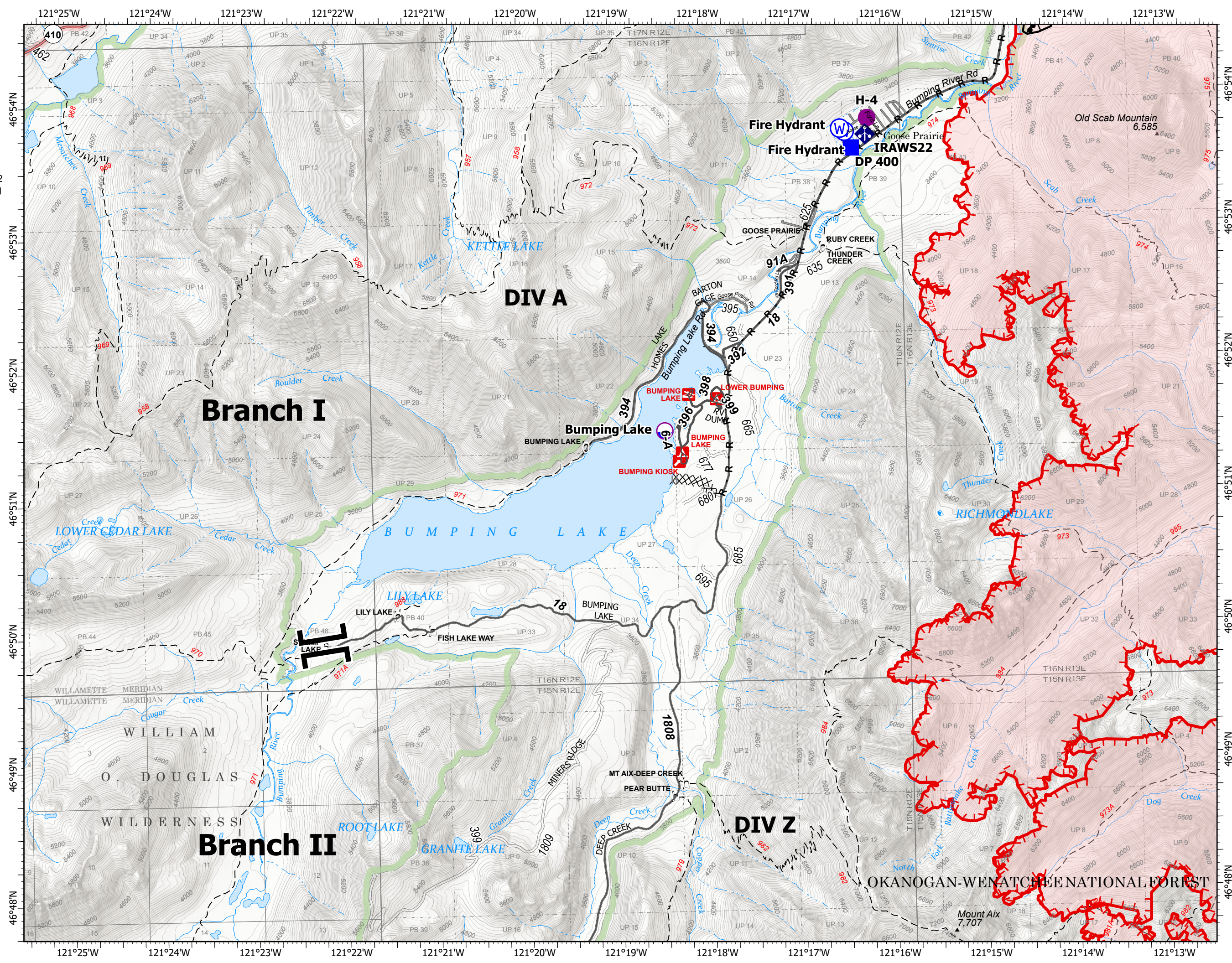
9/7/21

92,775 acres at 9/5/21 2030

Page 9 of 10



- Dip Site
- Helispot
- Branch Break
- Drop Point
- Mobile Weather Unit
- Water Source
- Completed Burnout
- Completed Dozer Line
- Completed Road as Line
- Planned Hand Line
- Fire Edge
- Contained Line
- Administrative FS Boundary
- FS Wilderness Boundary
- Wildfire Daily Fire Perimeter



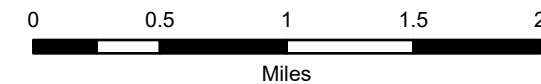
IAP Map

Schneider Springs
WA-OWF-000453

9/7/21

92,775 acres at 9/5/21 2030

Page 10 of 10



- Dip Site
- Helispot
- Division Break
- Drop Point
- Closure
- Staging Area
- Lookout
- Value at Risk
- Bridge
- Mobile Weather Unit
- Water Source
- Completed Burnout
- Completed Hand Line
- Completed Road as Line
- Fire Edge
- Contained Line
- Administrative FS Boundary
- FS Wilderness Boundary
- Wildfire Daily Fire Perimeter

