

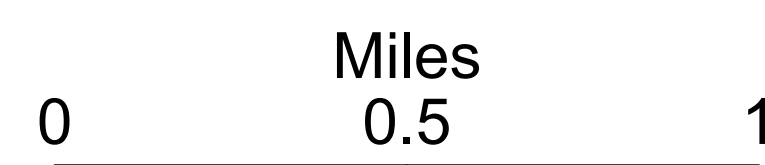
# DIV H

## Ops Map

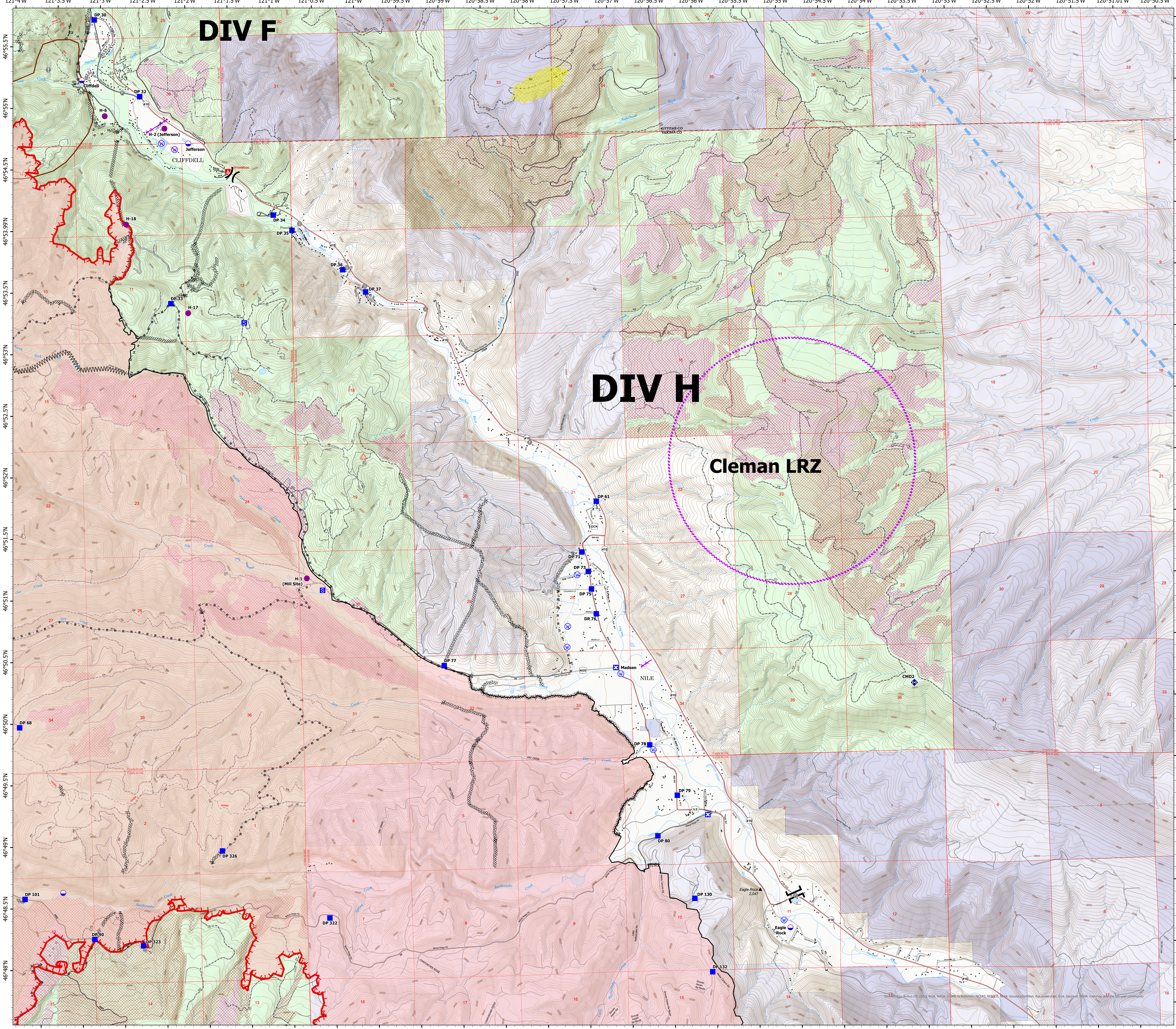
Schneider Springs  
WA-OWF-000453

Division Map Book  
9/7/21

92,775 acres at 9/5/21 2030



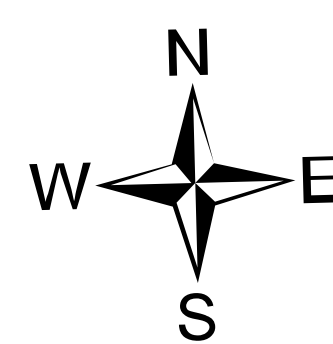
- Dip Site
- Helispot
- Division Break
- Branch Break
- Drop Point
- Closure
- Staging Area
- Value at Risk
- Fire Station
- Bridge
- Repeater
- Water Source
- Restricted Water Source
- Completed Dozer Line
- Completed Fuel Break
- Completed Hand Line
- Completed Road as Line
- Planned Hand Line
- Planned Road as Line
- Access or Improved Road
- Aerial Hazard
- UAS Launch and Recovery Zone
- Temporary Flight Restriction
- Fire Edge
- Contained Line
- Natural Fuel Break
- Other
- Wildfire Daily Fire Perimeter
- Structures
- Campground
- State or PVT
- African Wiregrass
- Resource Concern
- Fire Fuels Treatments
- Mechanical Fuels Treatments
- Forest Service Land
- State Public Lands
- Other State Lands
- FS - Suitable for Passenger Car
- FS - High Clearance/Closed



# DIV F

# DIV H

## Cleman LRZ



PNW2  
9/6/2021 2140  
Acres from IR  
North American 1983 Datum, Lat/Long  
Grid

