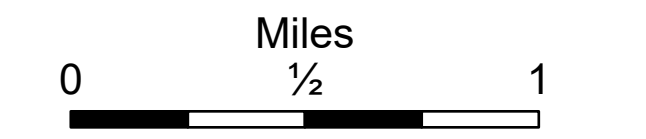


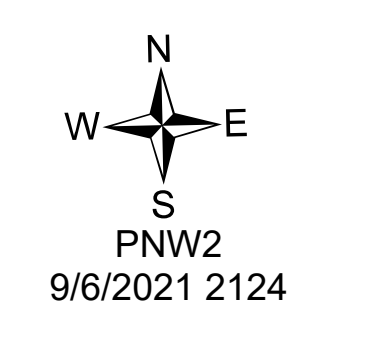
Repair DivA/D/E

Schneider Springs
WA-OWF-000453
9/7/21

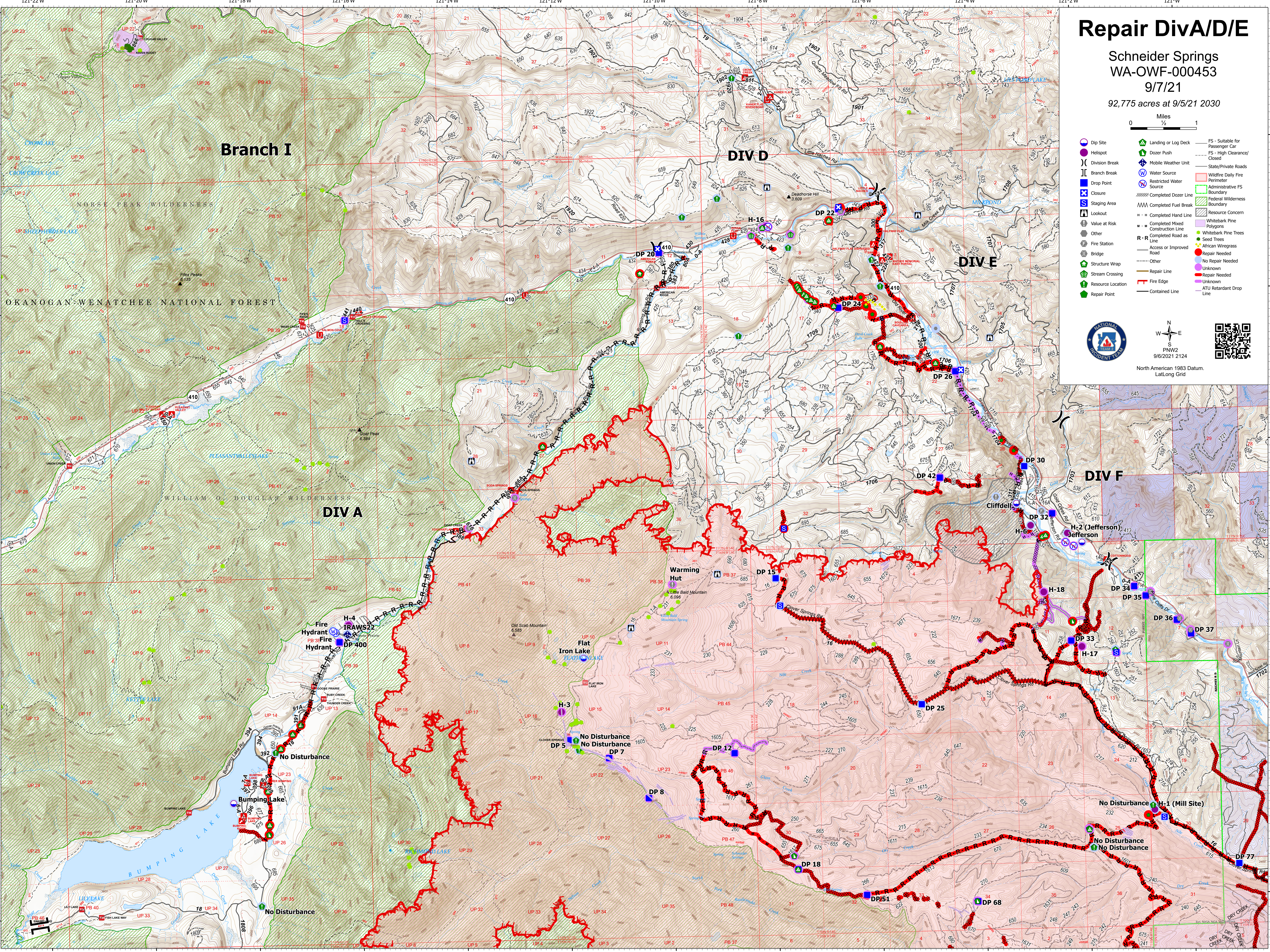
92,775 acres at 9/5/21 2030



- Dip Site
- Helispot
- Division Break
- Branch Break
- Drop Point
- Closure
- Staging Area
- Lookout
- Value at Risk
- Other
- Fire Station
- Structure
- Stream Crossing
- Resource Location
- Repair Point
- Landing or Log Deck
- Dozer Push
- Mobile Weather Unit
- Water Source
- Restricted Water Source
- Completed Dozer Line
- Completed Fuel Break
- Completed Hand Line
- Completed Mixed Construction Line
- Completed Road as Line
- Access or Improved Road
- Bridge
- Structure Wrap
- Stream Crossing
- Resource Location
- Repair Point
- FS - Suitable for Passenger Car
- FS - High Clearance/Closed
- State/Private Roads
- Wildfire Daily Fire Perimeter
- Administrative FS Boundary
- Federal Wilderness Boundary
- Resource Concern
- Whitebark Pine Polygons
- Whitebark Pine Trees
- Seed Trees
- African Wiregrass
- Repair Needed
- No Repair Needed
- Unknown
- Repair Needed
- Unknown
- ATU Retardant Drop Line



North American 1983 Datum.
Lat,Long Grid



Branch I

DIV D

DIV E

DIV A

DIV F

H-4
TRAWS22
Fire Hydrant
PB 31
Fire Hydrant
DP 400

Warming Hut

Iron Flat

H-2 (Jefferson)
Jefferson

No Disturbance

No Disturbance
DP 5

No Disturbance
DP 7

No Disturbance
H-1 (Mill Site)

No Disturbance

No Disturbance