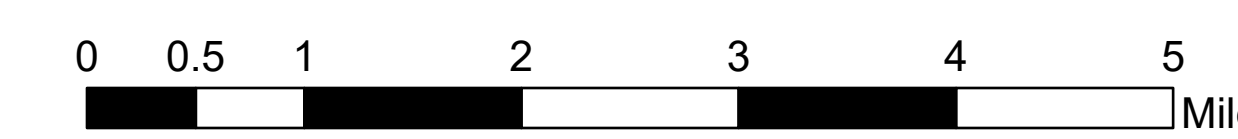


Air Ops Map

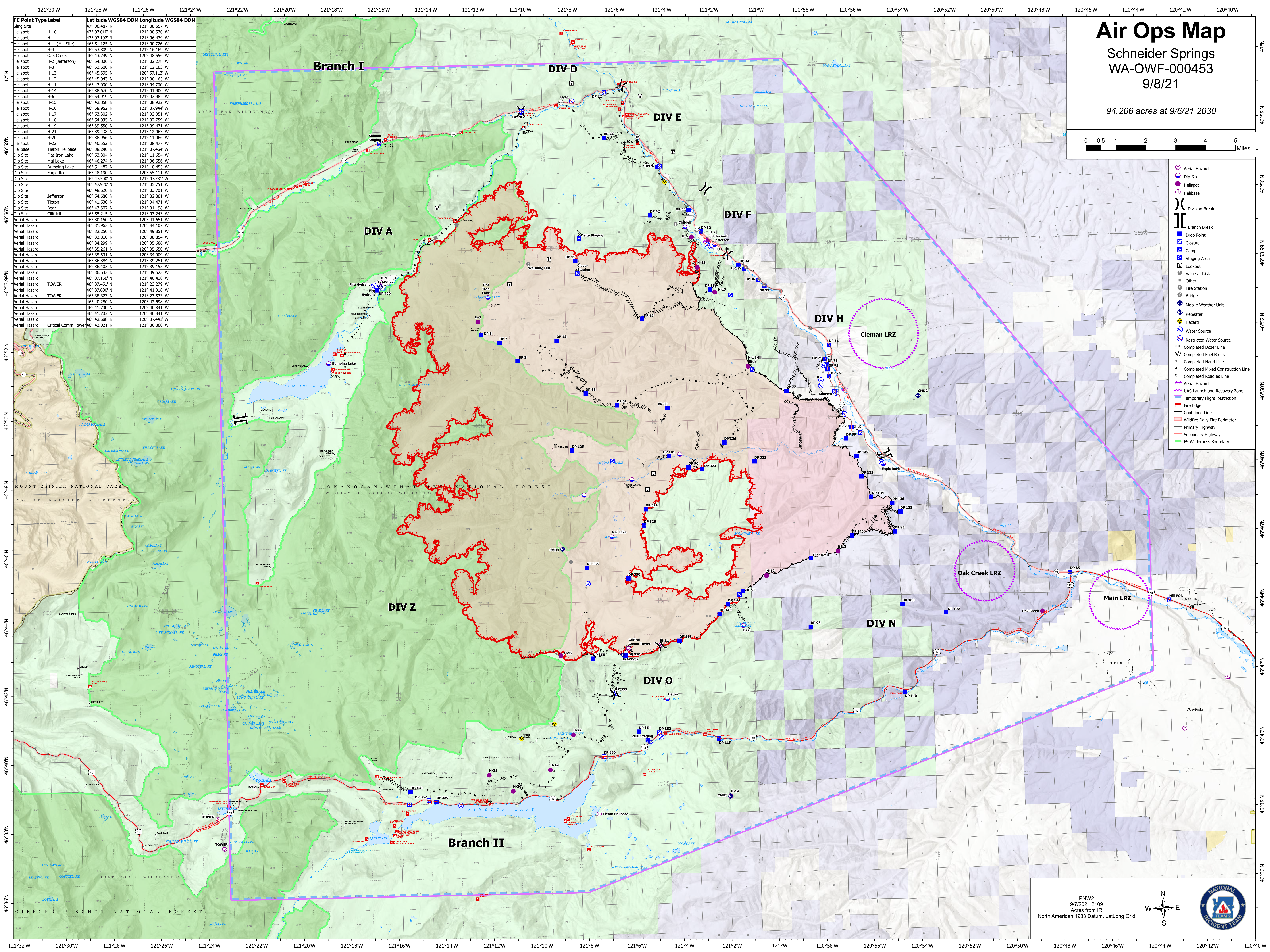
Schneider Springs
WA-OWF-000453
9/8/21

94,206 acres at 9/6/21 2030



- Aerial Hazard
- Dip Site
- Helispot
- Helibase
- Division Break
- Branch Break
- Drop Point
- Closure
- Camp
- Staging Area
- Lookout
- Value at Risk
- Other
- Fire Station
- Bridge
- Mobile Weather Unit
- Repeater
- Hazard
- Water Source
- Restricted Water Source
- Completed Dozer Line
- Completed Fuel Break
- Completed Hand Line
- Completed Mixed Construction Line
- Completed Road as Line
- Aerial Hazard
- UAS Launch and Recovery Zone
- Temporary Flight Restriction
- Contained Line
- Wildfire Daily Fire Perimeter
- Primary Highway
- Secondary Highway
- PS Wilderness Boundary

FC Point Type/Label	Latitude WGS84	DDM	Longitude WGS84	DDM
Sling Site	47° 06.487' N		121° 08.557' W	
Helispot	H-10	47° 07.010' N	121° 08.530' W	
Helispot	H-1	47° 07.192' N	121° 06.439' W	
Helispot	H-1 (Mill Site)	46° 51.125' N	121° 00.726' W	
Helispot	H-4	46° 53.809' N	121° 16.169' W	
Helispot	Oak Creek	46° 43.799' N	120° 48.556' W	
Helispot	H-2 (Jefferson)	46° 54.806' N	121° 02.278' W	
Helispot	H-3	46° 52.600' N	121° 12.103' W	
Helispot	H-13	46° 45.699' N	120° 57.113' W	
Helispot	H-12	46° 45.959' N	121° 07.944' W	
Helispot	H-17	46° 53.300' N	121° 02.051' W	
Helispot	H-18	46° 54.035' N	121° 02.759' W	
Helispot	H-19	46° 39.550' N	121° 09.471' W	
Helispot	H-21	46° 39.438' N	121° 12.063' W	
Helispot	H-20	46° 38.956' N	121° 11.066' W	
Helispot	H-22	46° 40.552' N	121° 08.477' W	
Helibase	Tieton Helibase	46° 38.240' N	121° 07.464' W	
Dip Site	Flat Iron Lake	46° 53.304' N	121° 11.654' W	
Dip Site	Mal Lake	46° 46.274' N	121° 06.656' W	
Dip Site	Bumping Lake	46° 51.487' N	121° 18.455' W	
Dip Site	Eagle Rock	46° 48.190' N	120° 55.111' W	
Dip Site		46° 47.500' N	121° 07.781' W	
Dip Site		46° 47.920' N	121° 05.751' W	
Dip Site		46° 48.620' N	121° 03.701' W	
Dip Site	Jefferson	46° 54.680' N	121° 02.001' W	
Dip Site	Tieton	46° 41.530' N	121° 04.471' W	
Dip Site	Bear	46° 43.607' N	121° 01.198' W	
Dip Site	Cliffdell	46° 55.215' N	121° 03.243' W	
Aerial Hazard		46° 30.150' N	120° 41.651' W	
Aerial Hazard		46° 31.963' N	120° 44.107' W	
Aerial Hazard		46° 32.250' N	120° 49.851' W	
Aerial Hazard		46° 33.810' N	120° 38.854' W	
Aerial Hazard		46° 34.299' N	120° 35.686' W	
Aerial Hazard		46° 35.261' N	120° 35.600' W	
Aerial Hazard		46° 35.631' N	120° 34.909' W	
Aerial Hazard		46° 36.384' N	121° 39.251' W	
Aerial Hazard		46° 36.403' N	121° 39.155' W	
Aerial Hazard		46° 36.633' N	121° 39.523' W	
Aerial Hazard		46° 37.150' N	121° 40.418' W	
Aerial Hazard		46° 37.451' N	121° 23.279' W	
Aerial Hazard	TOWER	46° 37.600' N	121° 41.318' W	
Aerial Hazard	TOWER	46° 38.323' N	121° 23.533' W	
Aerial Hazard		46° 40.280' N	120° 42.698' W	
Aerial Hazard		46° 41.700' N	120° 40.841' W	
Aerial Hazard		46° 43.703' N	120° 40.841' W	
Aerial Hazard		46° 42.688' N	120° 37.441' W	
Aerial Hazard	Critical Comm Tower	46° 43.021' N	121° 06.060' W	



PNW2
9/7/2021 2109
Acres from IR
North American 1983 Datum, LatLong Grid