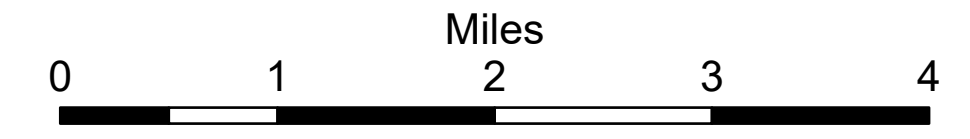


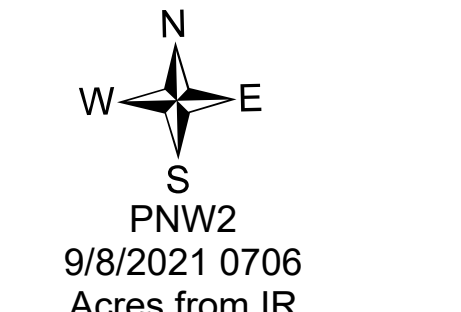
Operations Map

Schneider Springs
WA-OWF-000453
9/8/21

97,288 acres at 9/7/21 2315



	Aerial Hazard		Restricted Water Source		Structures
	Dip Site		Completed Dozer Line		Whitebark Pine Trees
	Helibase		Completed Fuel Break		Seed Trees
	Division Break		Completed Hand Line		Above Ground Power Lines
	Branch Break		Completed Mixed Construction Line		Below Ground Power Lines
	Drop Point		Completed Road as Line		FS - Suitable for Passenger Car
	Closure		Planned Dozer Line		FS - High Clearance/Closed
	Camp		Planned Hand Line		State/Private Roads
	Staging Area		Planned Road as Line		Fire Fuels Treatments
	Lookout		Access or Improved Road		Mechanical Fuels Treatments
	Value at Risk		Aerial Hazard		DNR Fuel Treatments
	Fire Station		UAS Launch and Recovery Zone		African Wiregrass
	Bridge		Temporary Flight Restriction		Past Fires
	Mobile Weather Unit		Fire Edge		Whitebark Pine Polygons
	Repeater		Contained Line		Resource Concern
	Hazard		Natural Fuel Break		Administrative FS Boundary
	Water Source		Wildfire Daily Fire Perimeter		Federal Wilderness Boundary



PNW2
9/8/2021 0706
Acres from IR
North American 1983 Datum,
Lat/Long Grid

