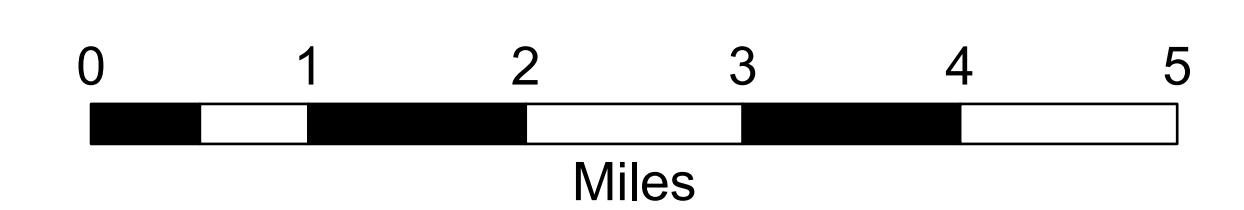
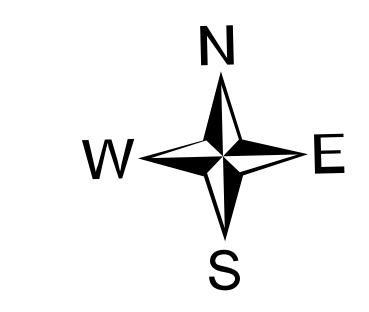


Transportation Map

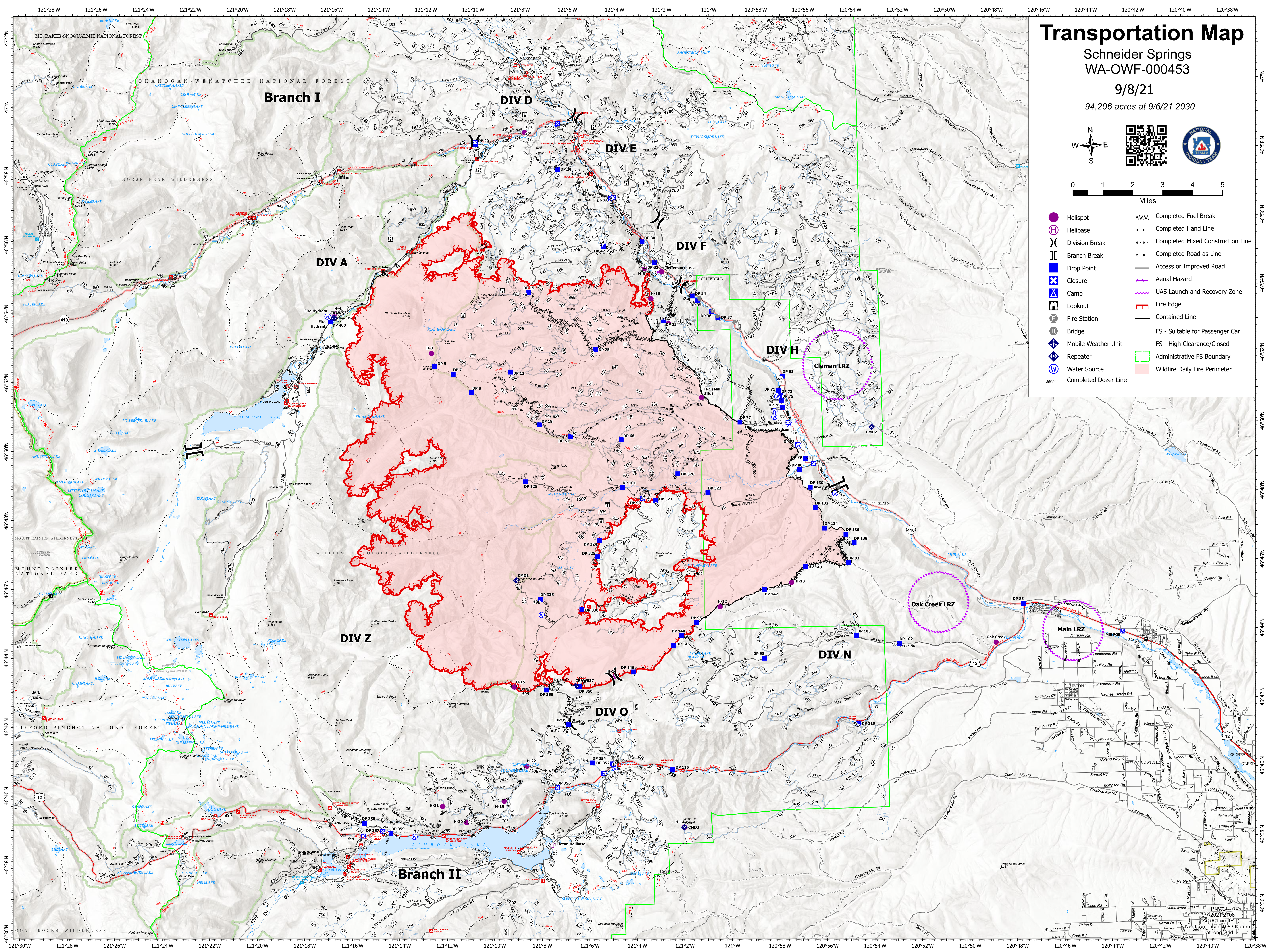
Schneider Springs
WA-OWF-000453

9/8/21

94,206 acres at 9/6/21 2030



- Helispot
- ⊕ Helibase
- ⌋ Branch Break
- Drop Point
- ⊗ Closure
- ⛑ Camp
- 🏠 Lookout
- 🔥 Fire Station
- 🌐 Bridge
- 📶 Repeater
- 💧 Water Source
- ⊗ Completed Dozer Line
- Completed Fuel Break
- - - Completed Hand Line
- · - Completed Mixed Construction Line
- · - Completed Road as Line
- Access or Improved Road
- ⚡ Aerial Hazard
- 🚁 UAS Launch and Recovery Zone
- 🔥 Fire Edge
- Contained Line
- FS - Suitable for Passenger Car
- FS - High Clearance/Closed
- 🟩 Administrative FS Boundary
- 🟪 Wildfire Daily Fire Perimeter



Acres from IR
North American 1983 Datum
at Long Gtd