

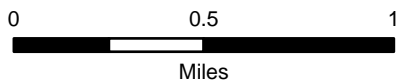
Forest Closure

Schneider Springs
WA-OWF-000453

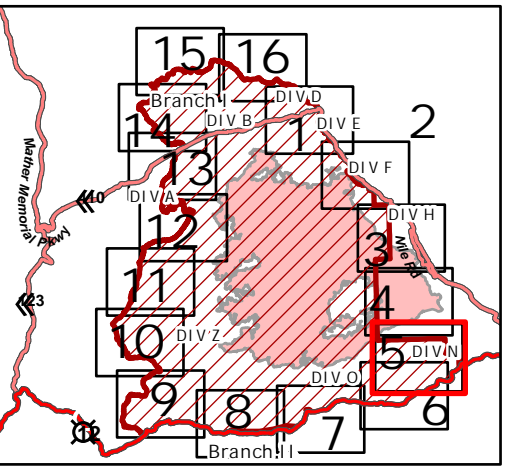
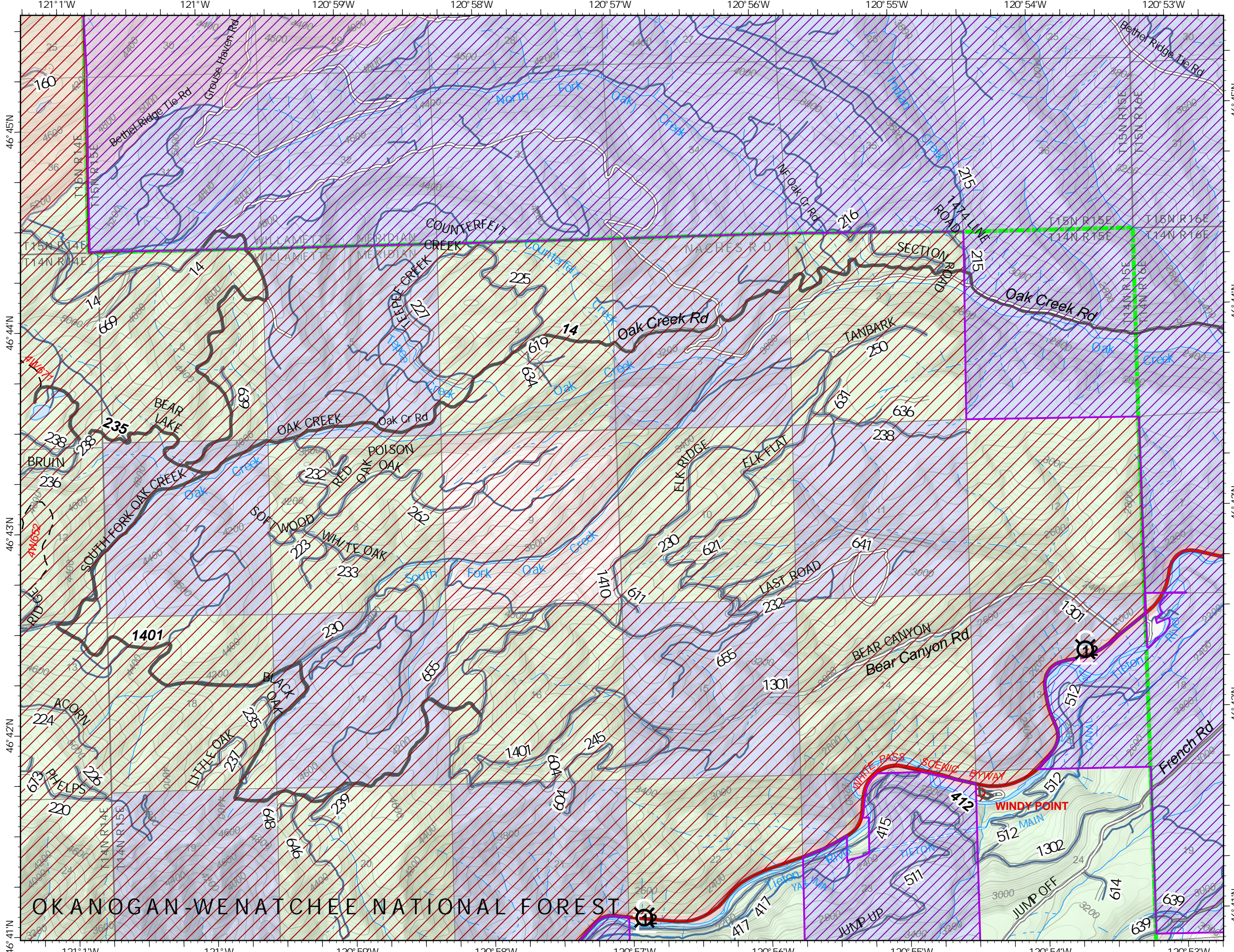
9/9/21

97,288 acres at 9/7/21 2315

Page 5



- Forest Closure Area (Proposed Effective Date 9/9/21)
- State Closure Area
- Other
- Prescribed Fire
- Wildfire Daily Fire Perimeter
- Primary Highway
- Secondary Highway
- FS - Suitable for Passenger Car
- FS - High Clearance/Closed
- Administrative FS Boundary
- FS Wilderness Boundary
- Bureau of Land Management
- US Forest Service
- National Park Service
- State
- Other Public
- Private
- World Hillshade



OKANOAGAN-WENATCHEE NATIONAL FOREST