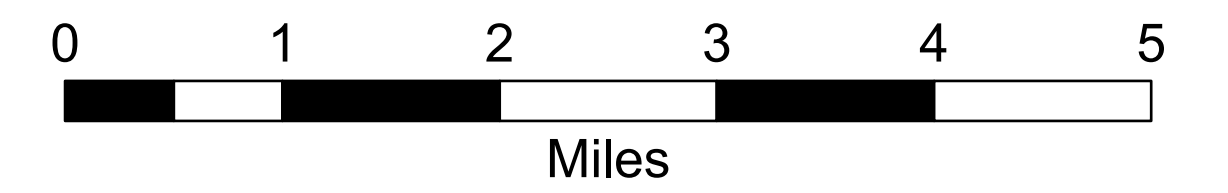
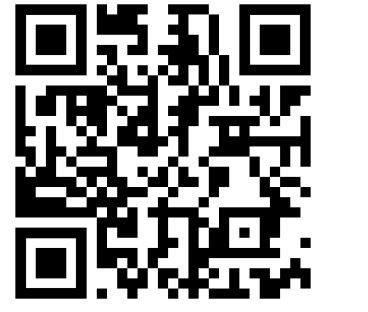
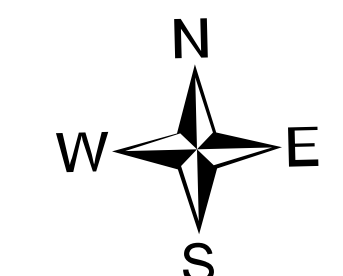


Transportation Map

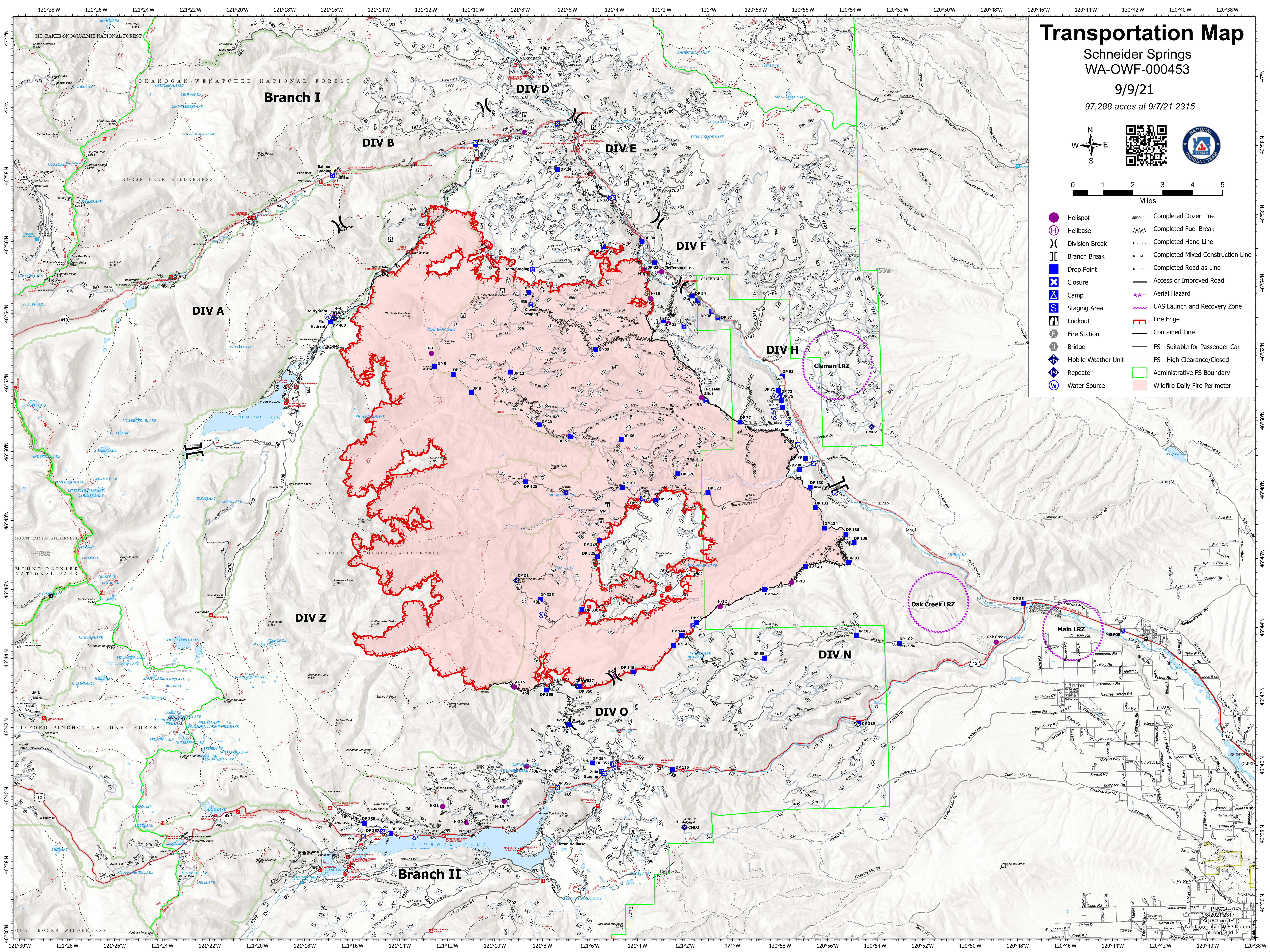
Schneider Springs
WA-OWF-000453

9/9/21

97,288 acres at 9/7/21 2315



- | | |
|---------------------|-----------------------------------|
| Helispot | Completed Dozer Line |
| Helibase | Completed Fuel Break |
| Division Break | Completed Hand Line |
| Branch Break | Completed Mixed Construction Line |
| Drop Point | Completed Road as Line |
| Closure | Access or Improved Road |
| Camp | Aerial Hazard |
| Staging Area | UAS Launch and Recovery Zone |
| Lookout | Fire Edge |
| Fire Station | Contained Line |
| Bridge | FS - Suitable for Passenger Car |
| Mobile Weather Unit | FS - High Clearance/Closed |
| Repeater | Administrative FS Boundary |
| Water Source | Wildfire Daily Fire Perimeter |



PNW2111VIEW
8/8/2021 2317
Acres from IR
North American 1983 Datum
at Long Gtd