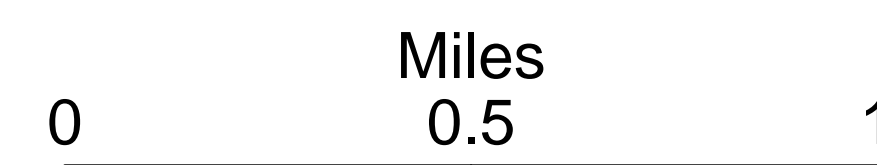


DIV F

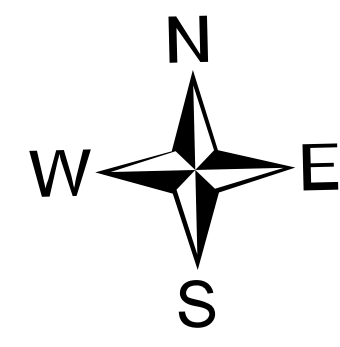
Ops Map

Schneider Springs
WA-OWF-000453
Division Map Book
9/10/21

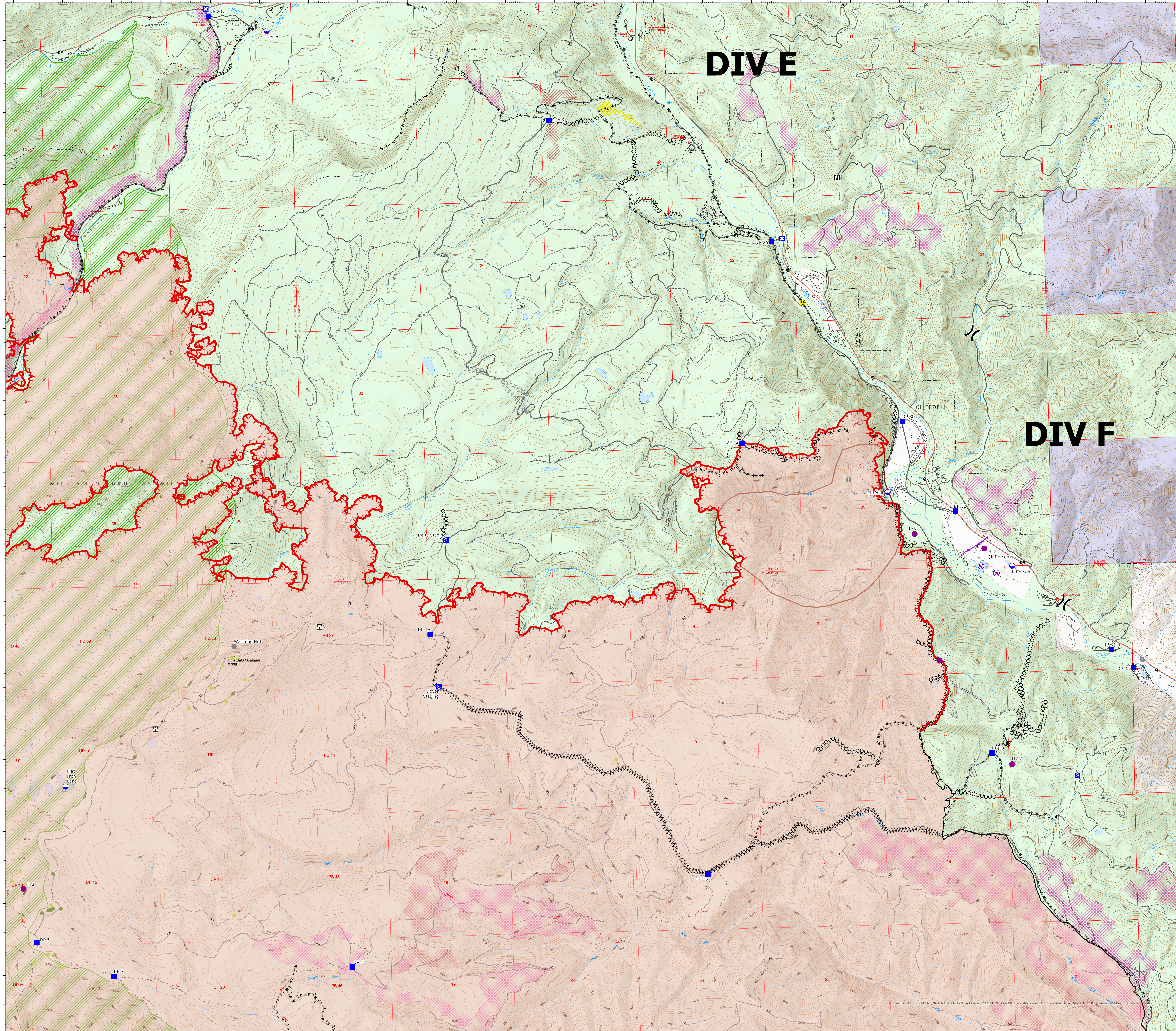
99,398 acres at 9/8/21 2320



- Dip Site
- Helispot
- Division Break
- Drop Point
- Closure
- Staging Area
- Lookout
- Value at Risk
- Fire Station
- Bridge
- Hazard
- Restricted Water Source
- Completed Dozer Line
- Completed Fuel Break
- Completed Hand Line
- Completed Road as Line
- Planned Dozer Line
- Planned Hand Line
- Planned Road as Line
- Access or Improved Road
- Aerial Hazard
- Fire Edge
- Contained Line
- Natural Fuel Break
- Other
- Wildfire Daily Fire Perimeter
- Structures
- Seed Trees
- Whitebark Pine Trees
- Campground
- Picnic Site
- State or PVT
- FS - Suitable for Passenger Car
- FS - High Clearance/Closed
- African Wiregrass
- Resource Concern
- Fire Fuels Treatments
- Mechanical Fuels Treatments
- Federal Wilderness Boundary
- Forest Service Land
- State Public Lands



PNW2
9/9/2021 2200
Acres from IR
North American 1983 Datum, Lat/Long
Grid



DIV E

DIV F