

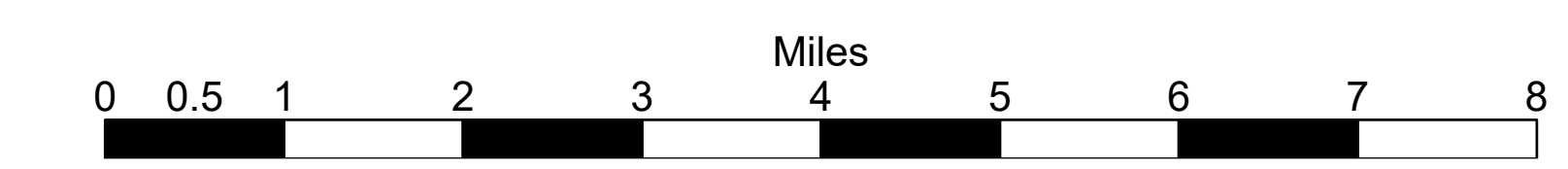
Management Action

Schneider Springs

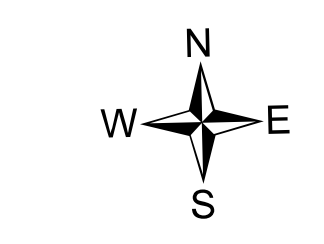
WA-OWF-000453

9/11/21

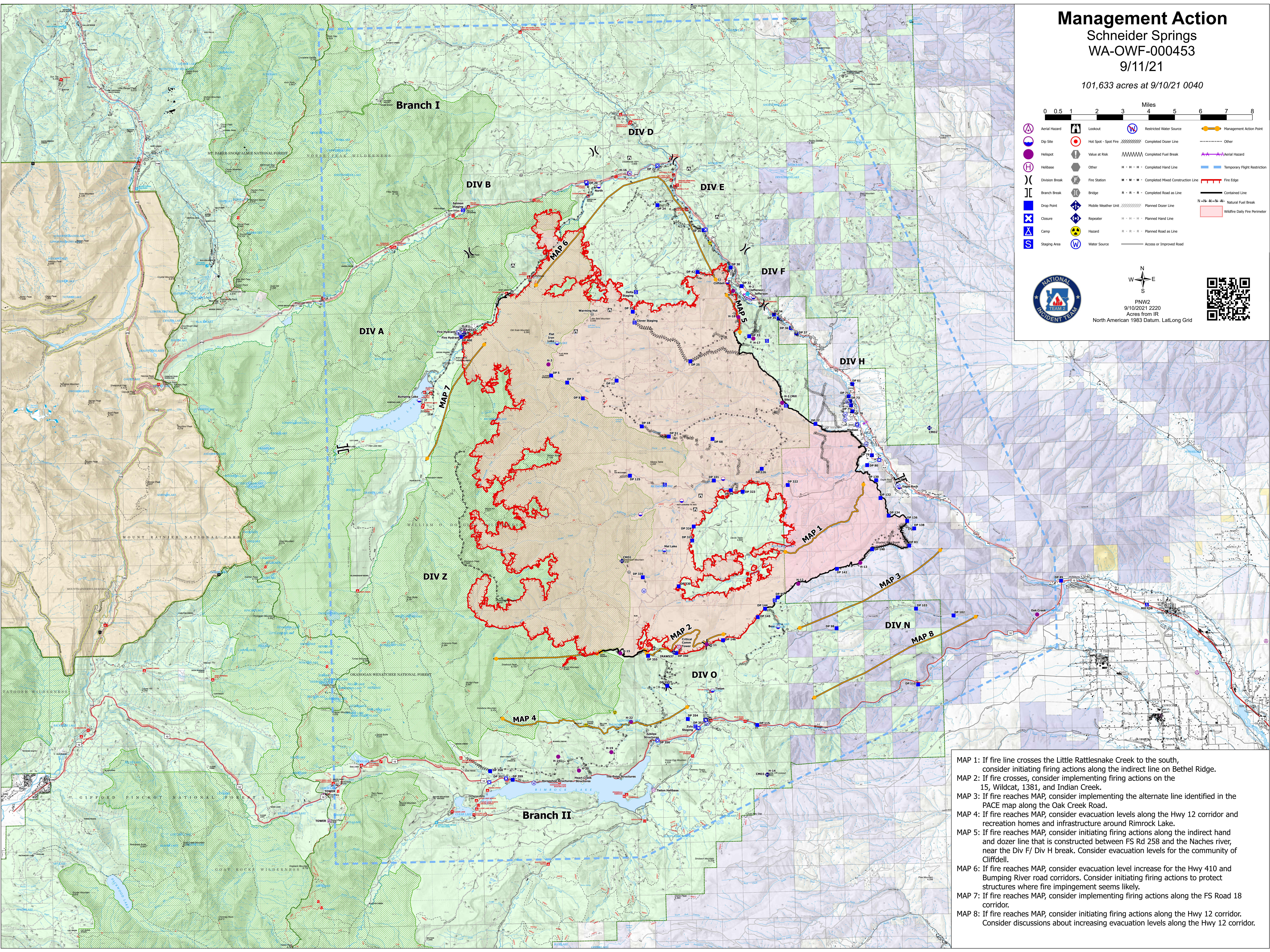
101,633 acres at 9/10/21 0040



	Aerial Hazard		Lookout		Restricted Water Source		Management Action Point
	Dip Site		Hot Spot - Spot Fire		Completed Dozer Line		Other
	Helispot		Value at Risk		Completed Fuel Break		Aerial Hazard
	Helibase		Other		Completed Hand Line		Temporary Flight Restriction
	Division Break		Fire Station		Completed Mixed Construction Line		Fire Edge
	Branch Break		Bridge		Completed Road as Line		Contained Line
	Drop Point		Mobile Weather Unit		Planned Dozer Line		Natural Fuel Break
	Closure		Repeater		Planned Hand Line		Wildfire Daily Fire Perimeter
	Camp		Hazard		Planned Road as Line		
	Staging Area		Water Source		Access or Improved Road		



PNW2
9/10/2021 2220
Acres from IR
North American 1983 Datum, Lat,Long Grid



- MAP 1: If fire line crosses the Little Rattlesnake Creek to the south, consider initiating firing actions along the indirect line on Bethel Ridge.
- MAP 2: If fire crosses, consider implementing firing actions on the 15, Wildcat, 1381, and Indian Creek.
- MAP 3: If fire reaches MAP, consider implementing the alternate line identified in the PACE map along the Oak Creek Road.
- MAP 4: If fire reaches MAP, consider evacuation levels along the Hwy 12 corridor and recreation homes and infrastructure around Rimrock Lake.
- MAP 5: If fire reaches MAP, consider initiating firing actions along the indirect hand and dozer line that is constructed between FS Rd 258 and the Naches river, near the Div F/ Div H break. Consider evacuation levels for the community of Cliffdell.
- MAP 6: If fire reaches MAP, consider evacuation level increase for the Hwy 410 and Bumping River road corridors. Consider initiating firing actions to protect structures where fire impingement seems likely.
- MAP 7: If fire reaches MAP, consider implementing firing actions along the FS Road 18 corridor.
- MAP 8: If fire reaches MAP, consider initiating firing actions along the Hwy 12 corridor. Consider discussions about increasing evacuation levels along the Hwy 12 corridor.