


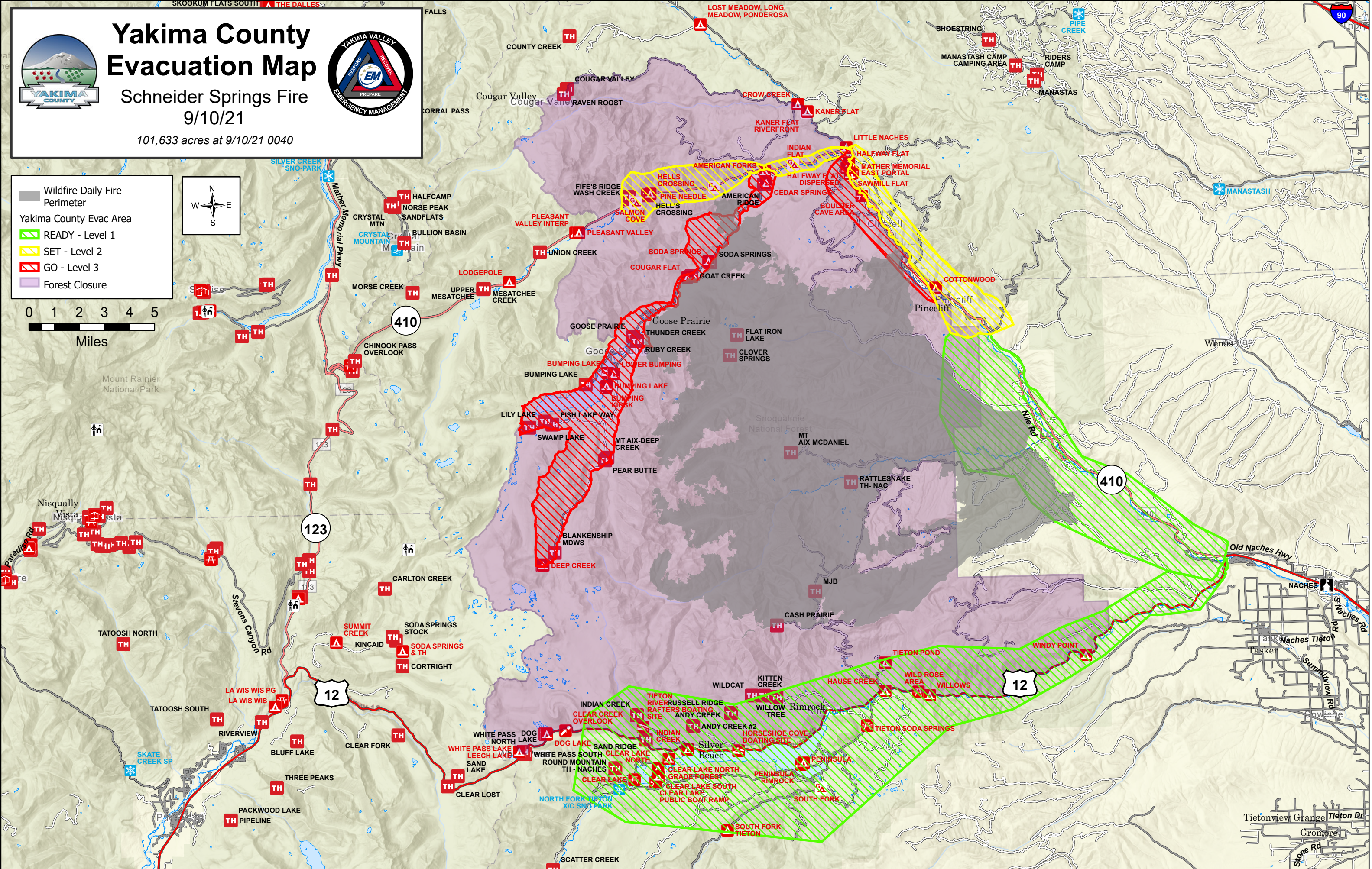
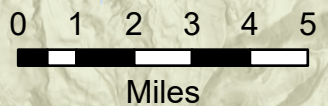
Yakima County Evacuation Map

Schneider Springs Fire

9/10/21
101,633 acres at 9/10/21 0040



■ Wildfire Daily Fire Perimeter
 ■ Yakima County Evac Area
 ■ READY - Level 1
 ■ SET - Level 2
 ■ GO - Level 3
 ■ Forest Closure



Tietonview Grange
Gromore
Stone Rd