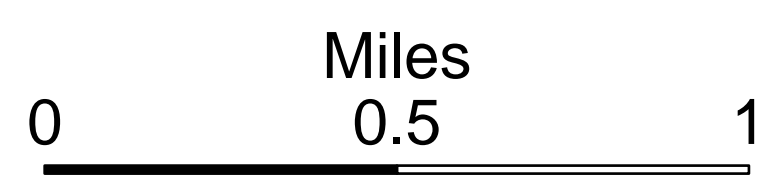


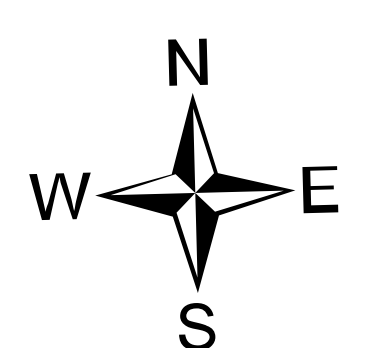

DIV H

Ops Map


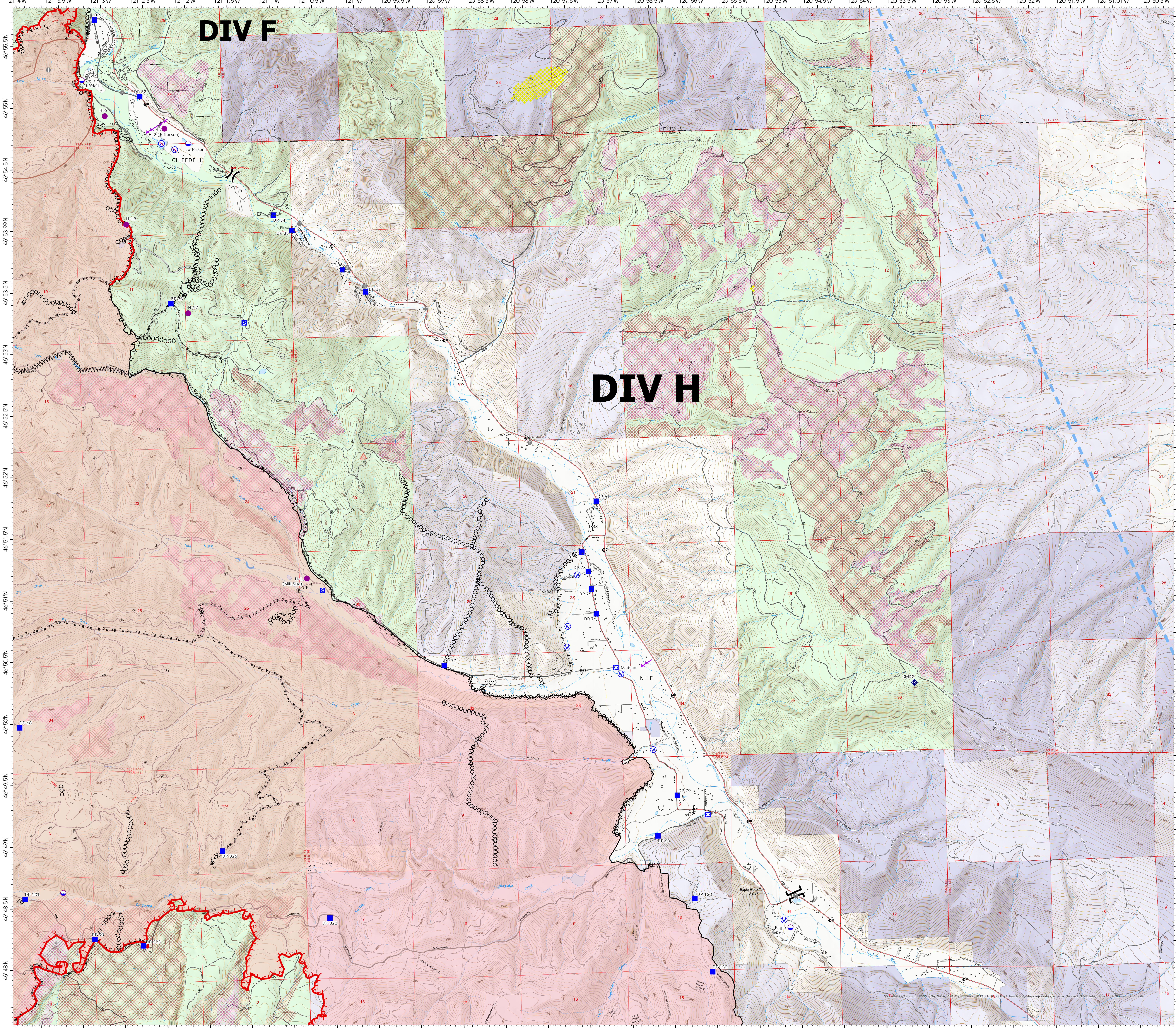
Schneider Springs
WA-OWF-000453
Division Map Book
9/11/21
101,633 acres at 9/10/21 0040



- Dip Site
- Helispot
- Division Break
- Branch Break
- Drop Point
- Closure
- Staging Area
- Value at Risk
- Fire Station
- Bridge
- Repeater
- Water Source
- Restricted Water Source
- Completed Dozer Line
- Completed Fuel Break
- Completed Hand Line
- Completed Road as Line
- Planned Road as Line
- Access or Improved Road
- Aerial Hazard
- Temporary Flight Restriction
- Fire Edge
- Contained Line
- Natural Fuel Break
- Other
- Wildfire Daily Fire Perimeter
- Structures
- Campground
- State or PVT
- FS - Suitable for Passenger Car
- FS - High Clearance/Closed
- African Wiregrass
- Resource Concern
- Fire Fuels Treatments
- Mechanical Fuels Treatments
- Forest Service Land
- State Public Lands
- Other State Lands

NW10
9/10/2021 2220
Acres from IR
North American 1983 Datum, LatLong
Grid

© 2021 The State of Washington, Department of Ecology, Division of Fire Management. All rights reserved. This map is a technical drawing and should not be used for any other purpose without the express written consent of the Department of Ecology.