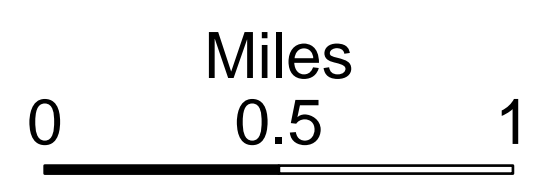


DIV A

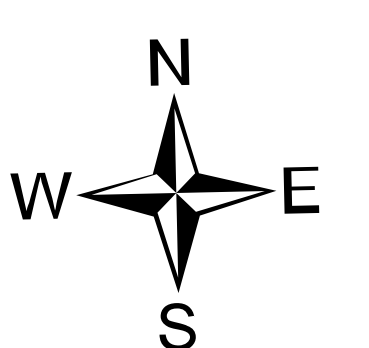
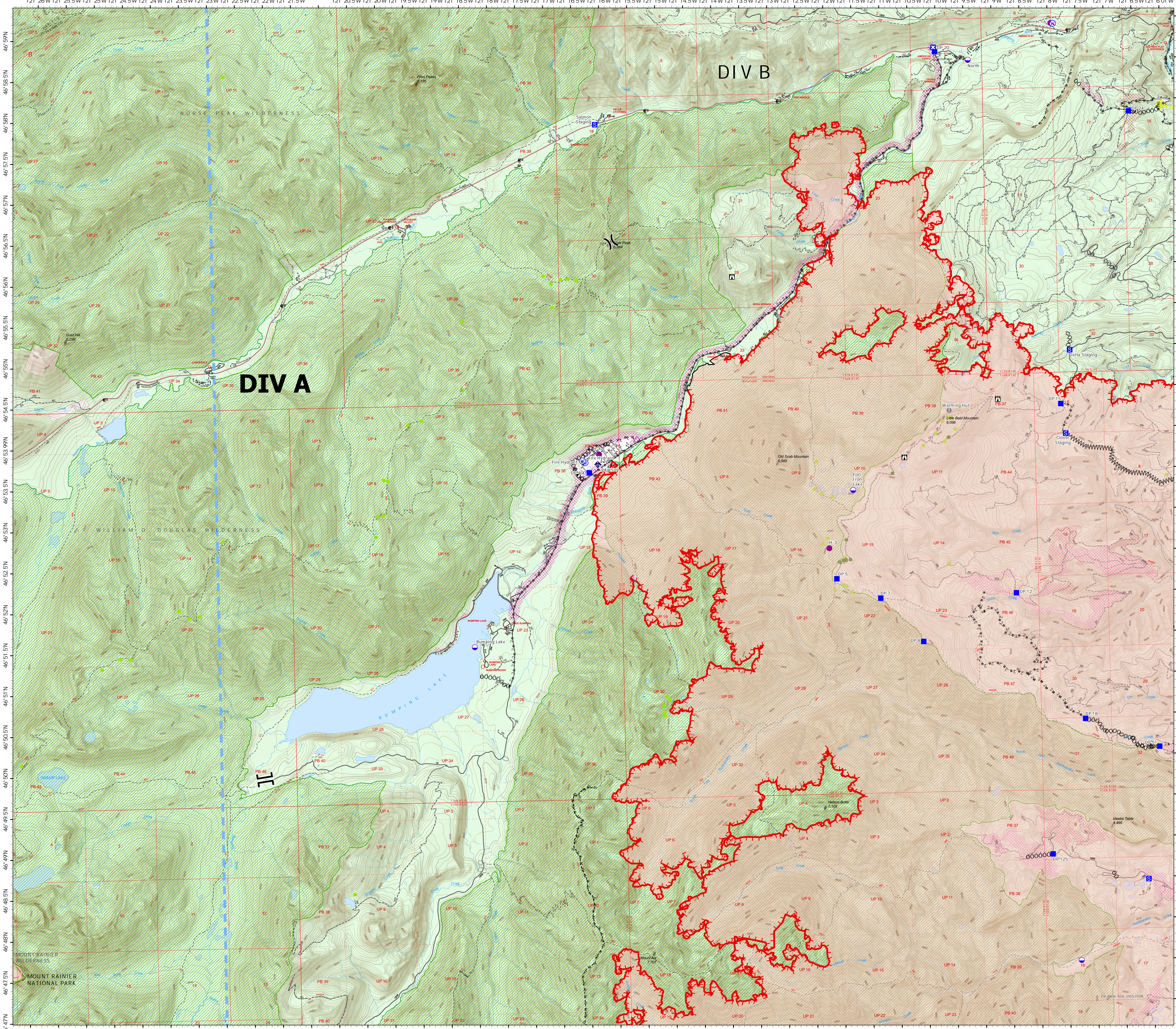
Ops Map

Schneider Springs
WA-OWF-000453
Division Map Book
9/12/21

101,633 acres at 9/10/21 0040



- Dip Site
- Hellspot
- Division Break
- Branch Break
- Drop Point
- Closure
- Staging Area
- Lookout
- Hot Spot - Spot Fire
- Value at Risk
- Bridge
- Mobile Weather Unit
- Water Source
- Restricted Water Source
- Completed Dozer Line
- Completed Fuel Break
- Completed Hand Line
- Completed Mixed Construction Line
- Completed Road as Line
- Planned Dozer Line
- Planned Hand Line
- Planned Road as Line
- Access or Improved Road
- Temporary Flight Restriction
- Fire Edge
- Contained Line
- Natural Fuel Break
- Other
- Wildfire Daily Fire Perimeter
- Structures
- Seed Trees
- Whitebark Pine Trees
- Campground
- Group Campground
- Boating Site
- Interpretive Site
- State or PVT
- FS - Suitable for Passenger Car
- FS - High Clearance/Closed
- African Wiregrass
- Fire Fuels Treatments
- Mechanical Fuels Treatments
- DNR Fuel Treatments
- Federal Wilderness Boundary
- Approved or Proclaimed NPS Boundary
- Federal Wilderness Boundary
- Forest Service Land
- National Park Service Lands
- Other Federal Lands



NW10
9/11/2021 2142
Acres from IR
North American 1983 Datum, Lat/Long
Grid

