

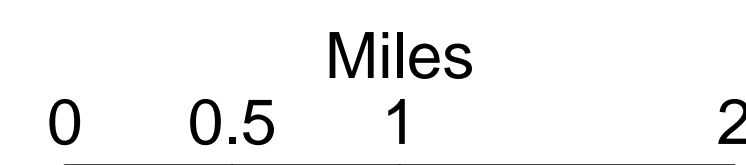
DIV Z/O

Ops Map

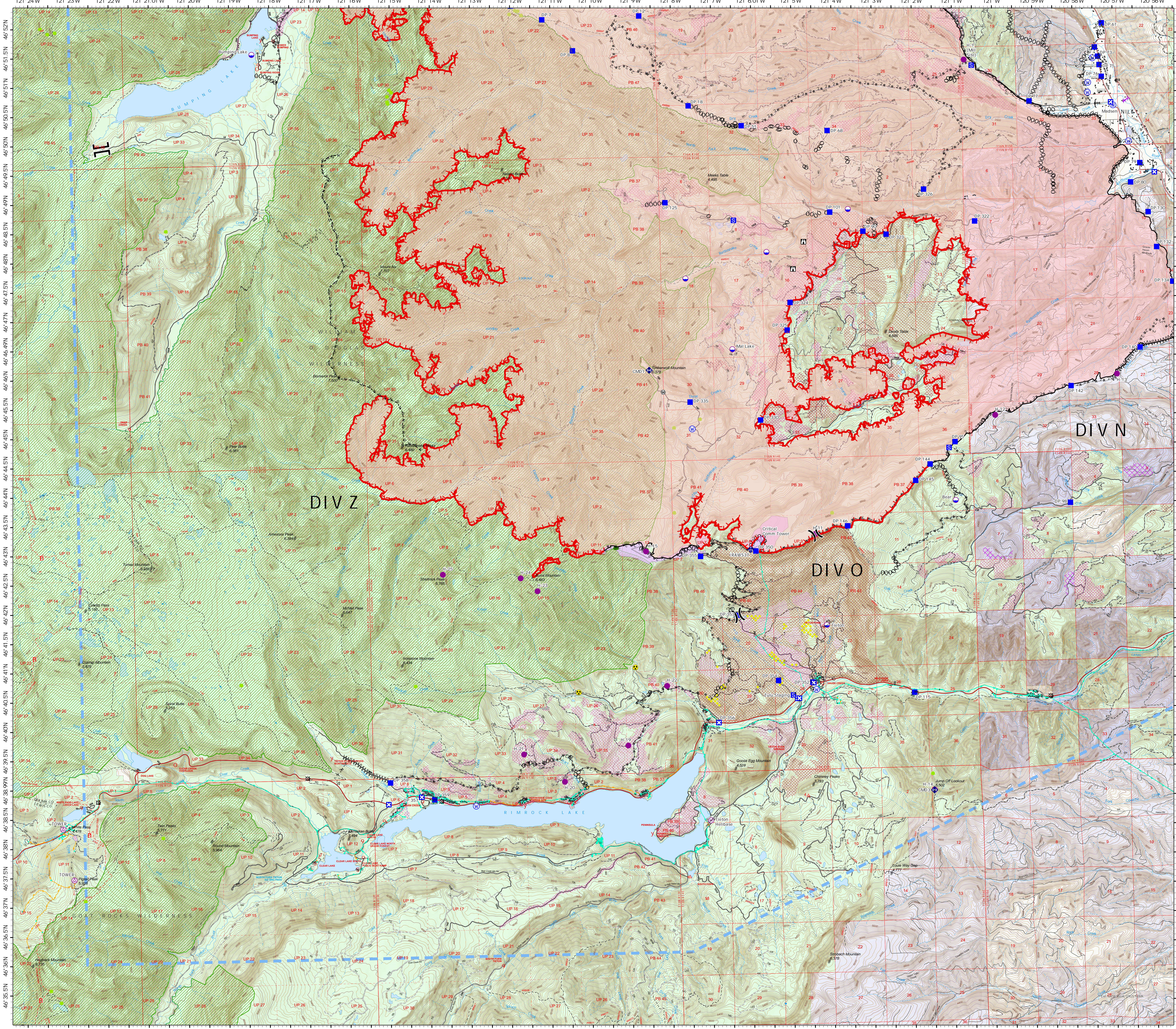
Schneider Springs
WA-OWF-000453

Division Map Book
9/12/21

101,633 acres at 9/10/21 0040



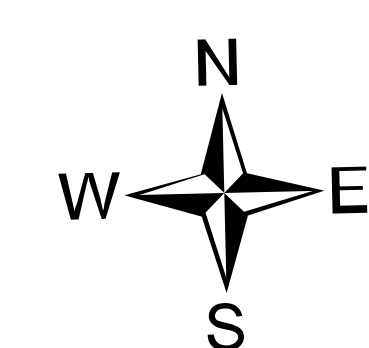
- Aerial Hazard
- Dip Site
- Hellspot
- Hellbase
- Division Break
- Branch Break
- Drop Point
- Closure
- Staging Area
- Lookout
- Value at Risk
- Mobile Weather Unit
- Repeater
- Hazard
- Water Source
- Completed Dozer Line
- Completed Fuel Break
- Completed Hand Line
- Completed Mxd Construction Line
- Completed Plow Line
- Completed Road as Line
- Planned Dozer Line
- Planned Hand Line
- Planned Road as Line
- Access or Improved Road
- Aerial Hazard
- Temporary Flight Restriction
- Fire Edge
- Contained Line
- Natural Fuel Break
- Other
- Wildfire Daily Fire Perimeter
- Structures
- Seed Trees
- Whitebark Pine Trees
- Campground
- Group Campground
- Picnic Site
- Boating Site
- Interpretive Site
- Snowpark
- Above Ground Power Lines
- Below Ground Power Lines
- State or PVT
- FS - Suitable for Passenger Car
- FS - High Clearance/Closed
- African Wiregrass
- Whitebark Pine Polygons
- Fire Fuels Treatments
- Mechanical Fuels Treatments
- DNR Fuel Treatments
- Federal Wilderness Boundary
- Forest Service Land
- State Public Lands
- Other State Lands
- Other Federal Lands
- Private: Local Government; Undesignated



DIV N

DIV Z

DIV O



NW10
9/11/2021 2144
Acres from IR
North American 1983 Datum, Lat/Long
Grid

