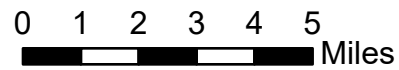


# Pilot Map

Schneider Springs  
WA-OWF-000453  
9/12/21

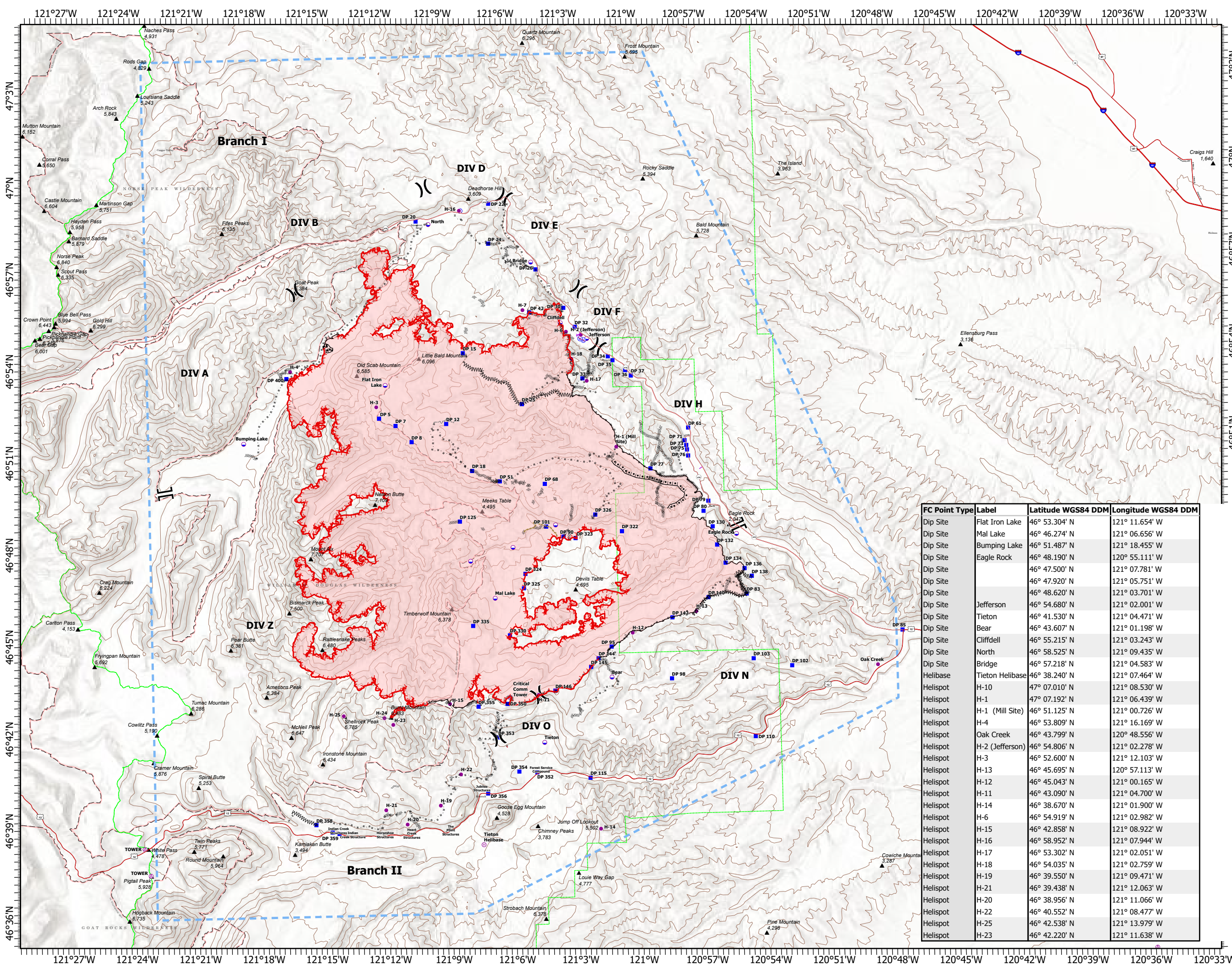
101,633 acres at 9/10/21 0040



- Aerial Hazard
- Dip Site
- Helispot
- Helibase
- Division Break
- Branch Break
- Drop Point
- Restricted Water Source
- Wildfire Daily Fire Perimeter
- Label Point
- Completed Burnout
- Completed Dozer Line
- Completed Fuel Break
- Completed Hand Line
- Completed Mixed Construction Line
- Completed Plow Line
- Completed Road as Line
- Access or Improved Road
- Fence
- Other
- Road Repair
- Aerial Hazard
- Temporary Flight Restriction
- Fire Edge
- Contained Line
- DNR Contour\_500\_SE



NW10  
9/11/2021 2130  
Acres from IR  
North American 1983 Datum.  
LatLong Grid



| FC Point Type | Label           | Latitude WGS84 DDM | Longitude WGS84 DDM |
|---------------|-----------------|--------------------|---------------------|
| Dip Site      | Flat Iron Lake  | 46° 53.304' N      | 121° 11.654' W      |
| Dip Site      | Mal Lake        | 46° 46.274' N      | 121° 06.656' W      |
| Dip Site      | Bumping Lake    | 46° 51.487' N      | 121° 18.455' W      |
| Dip Site      | Eagle Rock      | 46° 48.190' N      | 120° 55.111' W      |
| Dip Site      |                 | 46° 47.500' N      | 121° 07.781' W      |
| Dip Site      |                 | 46° 47.920' N      | 121° 05.751' W      |
| Dip Site      |                 | 46° 48.620' N      | 121° 03.701' W      |
| Dip Site      | Jefferson       | 46° 54.680' N      | 121° 02.001' W      |
| Dip Site      | Tieton          | 46° 41.530' N      | 121° 04.471' W      |
| Dip Site      | Bear            | 46° 43.607' N      | 121° 01.198' W      |
| Dip Site      | Cliffdell       | 46° 55.215' N      | 121° 03.243' W      |
| Dip Site      | North           | 46° 58.525' N      | 121° 09.435' W      |
| Dip Site      | Bridge          | 46° 57.218' N      | 121° 04.583' W      |
| Helibase      | Tieton Helibase | 46° 38.240' N      | 121° 07.464' W      |
| Helispot      | H-10            | 47° 07.010' N      | 121° 08.530' W      |
| Helispot      | H-1             | 47° 07.192' N      | 121° 06.439' W      |
| Helispot      | H-1 (Mill Site) | 46° 51.125' N      | 121° 00.726' W      |
| Helispot      | H-4             | 46° 53.809' N      | 121° 16.169' W      |
| Helispot      | Oak Creek       | 46° 43.799' N      | 120° 48.556' W      |
| Helispot      | H-2 (Jefferson) | 46° 54.806' N      | 121° 02.278' W      |
| Helispot      | H-3             | 46° 52.600' N      | 121° 12.103' W      |
| Helispot      | H-12            | 46° 45.043' N      | 121° 00.165' W      |
| Helispot      | H-11            | 46° 43.090' N      | 121° 04.700' W      |
| Helispot      | H-14            | 46° 38.670' N      | 121° 01.900' W      |
| Helispot      | H-6             | 46° 54.919' N      | 121° 02.982' W      |
| Helispot      | H-15            | 46° 42.858' N      | 121° 08.922' W      |
| Helispot      | H-16            | 46° 58.952' N      | 121° 07.944' W      |
| Helispot      | H-17            | 46° 53.302' N      | 121° 02.051' W      |
| Helispot      | H-18            | 46° 54.035' N      | 121° 02.759' W      |
| Helispot      | H-19            | 46° 39.550' N      | 121° 09.471' W      |
| Helispot      | H-21            | 46° 39.438' N      | 121° 12.063' W      |
| Helispot      | H-20            | 46° 38.956' N      | 121° 11.066' W      |
| Helispot      | H-22            | 46° 40.552' N      | 121° 08.477' W      |
| Helispot      | H-25            | 46° 42.538' N      | 121° 13.979' W      |
| Helispot      | H-23            | 46° 42.220' N      | 121° 11.638' W      |