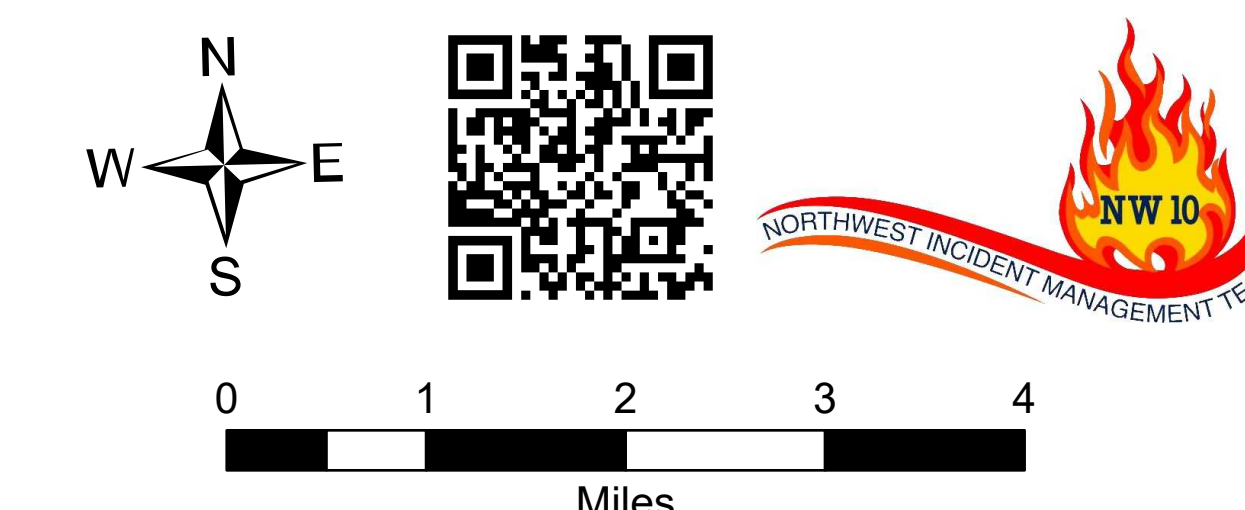


Briefing Map

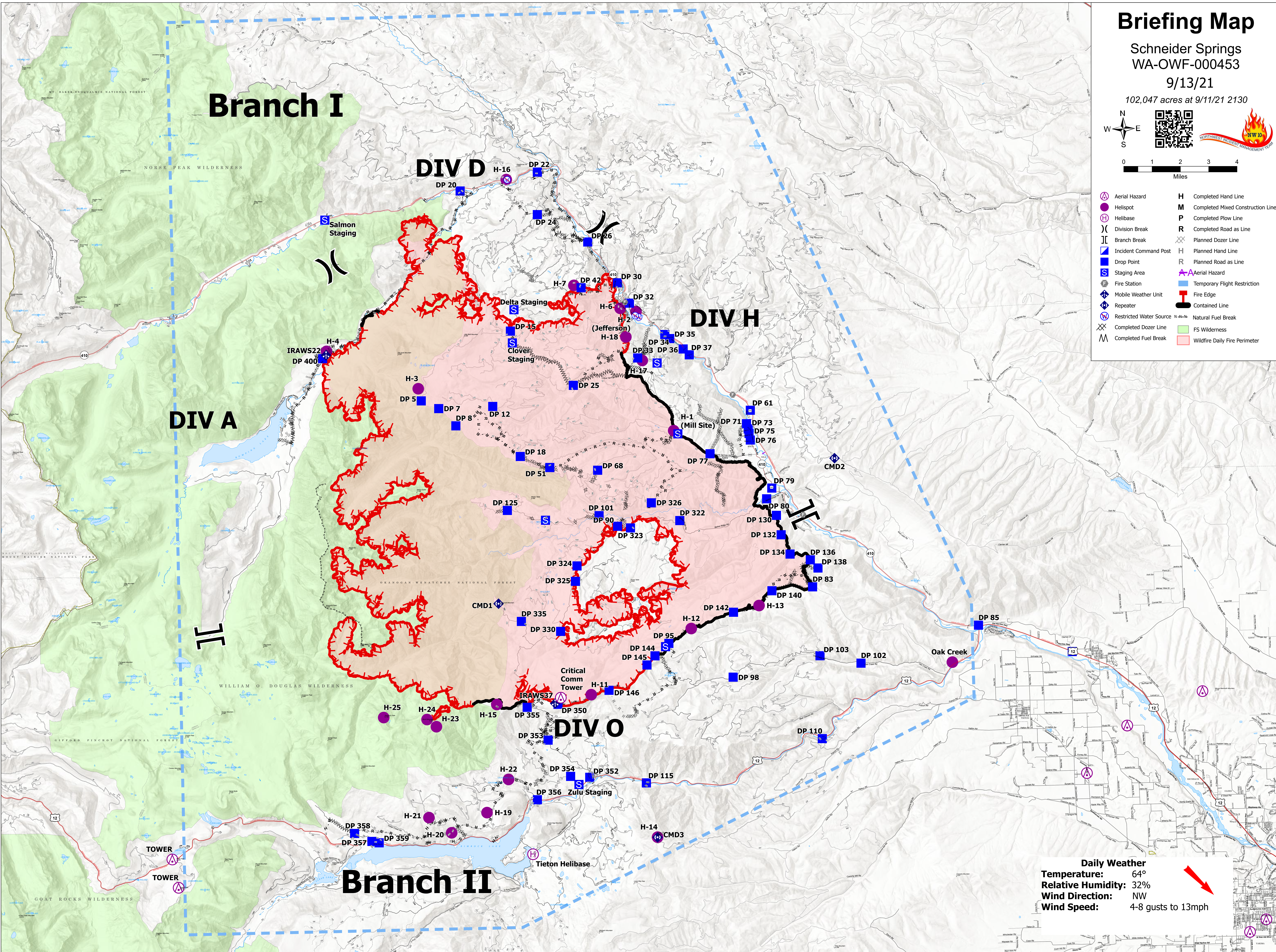
Schneider Springs
WA-OWF-000453

9/13/21

102,047 acres at 9/11/21 2130



- | | |
|---------------------------|-------------------------------------|
| ⊖ Aerial Hazard | H Completed Hand Line |
| ⊙ Helispot | M Completed Mixed Construction Line |
| ⊕ Helibase | P Completed Plow Line |
| ⌋ Division Break | R Completed Road as Line |
| ⌌ Branch Break | ⊗ Planned Dozer Line |
| Ⓜ Incident Command Post | H Planned Hand Line |
| Ⓜ Drop Point | R Planned Road as Line |
| Ⓜ Staging Area | ⚡ Aerial Hazard |
| Ⓜ Fire Station | Ⓜ Temporary Flight Restriction |
| Ⓜ Mobile Weather Unit | Ⓜ Fire Edge |
| Ⓜ Repeater | Ⓜ Contained Line |
| Ⓜ Restricted Water Source | Ⓜ Natural Fuel Break |
| Ⓜ Completed Dozer Line | Ⓜ FS Wilderness |
| Ⓜ Completed Fuel Break | Ⓜ Wildfire Daily Fire Perimeter |



Daily Weather
Temperature: 64°
Relative Humidity: 32%
Wind Direction: NW
Wind Speed: 4-8 gusts to 13mph