

Management Action Points

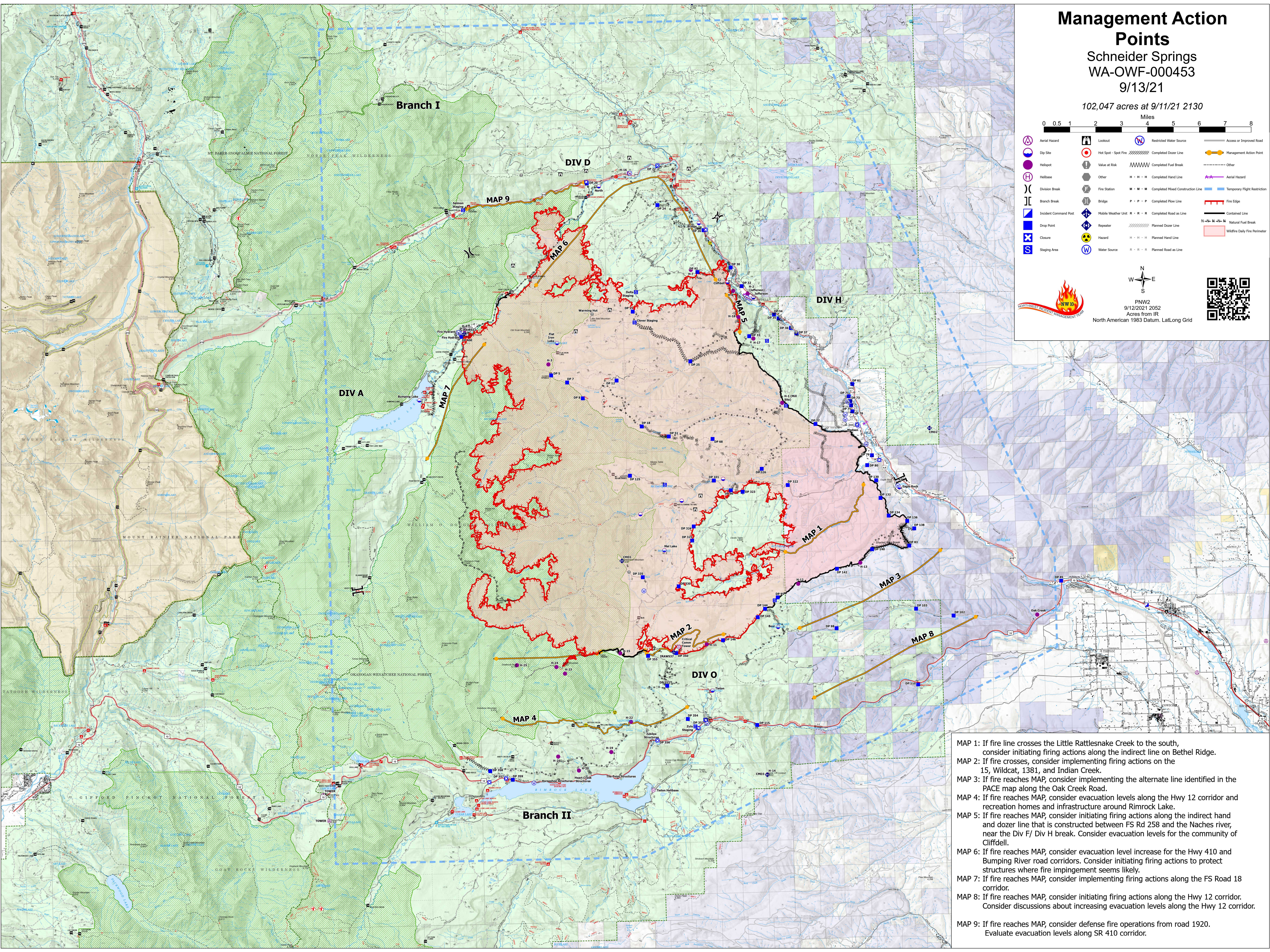
Schneider Springs
WA-OWF-000453
9/13/21

102,047 acres at 9/11/21 2130





PNW2
9/12/2021 2052
Acres from IR
North American 1983 Datum, Lat,Long Grid



- MAP 1: If fire line crosses the Little Rattlesnake Creek to the south, consider initiating firing actions along the indirect line on Bethel Ridge.
- MAP 2: If fire crosses, consider implementing firing actions on the 15, Wildcat, 1381, and Indian Creek.
- MAP 3: If fire reaches MAP, consider implementing the alternate line identified in the PACE map along the Oak Creek Road.
- MAP 4: If fire reaches MAP, consider evacuation levels along the Hwy 12 corridor and recreation homes and infrastructure around Rimrock Lake.
- MAP 5: If fire reaches MAP, consider initiating firing actions along the indirect hand and dozer line that is constructed between FS Rd 258 and the Naches river, near the Div F/ Div H break. Consider evacuation levels for the community of Cliffdell.
- MAP 6: If fire reaches MAP, consider evacuation level increase for the Hwy 410 and Bumping River road corridors. Consider initiating firing actions to protect structures where fire impingement seems likely.
- MAP 7: If fire reaches MAP, consider implementing firing actions along the FS Road 18 corridor.
- MAP 8: If fire reaches MAP, consider initiating firing actions along the Hwy 12 corridor. Consider discussions about increasing evacuation levels along the Hwy 12 corridor.
- MAP 9: If fire reaches MAP, consider defense fire operations from road 1920. Evaluate evacuation levels along SR 410 corridor.