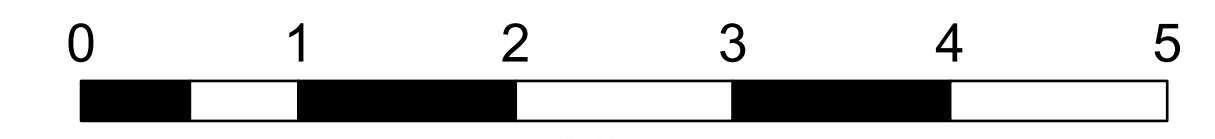
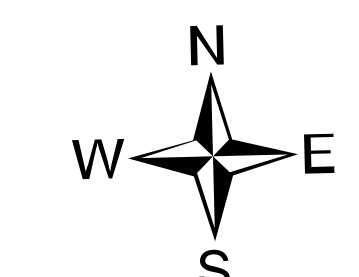


Transportation Map

Schneider Springs
WA-OWF-000453

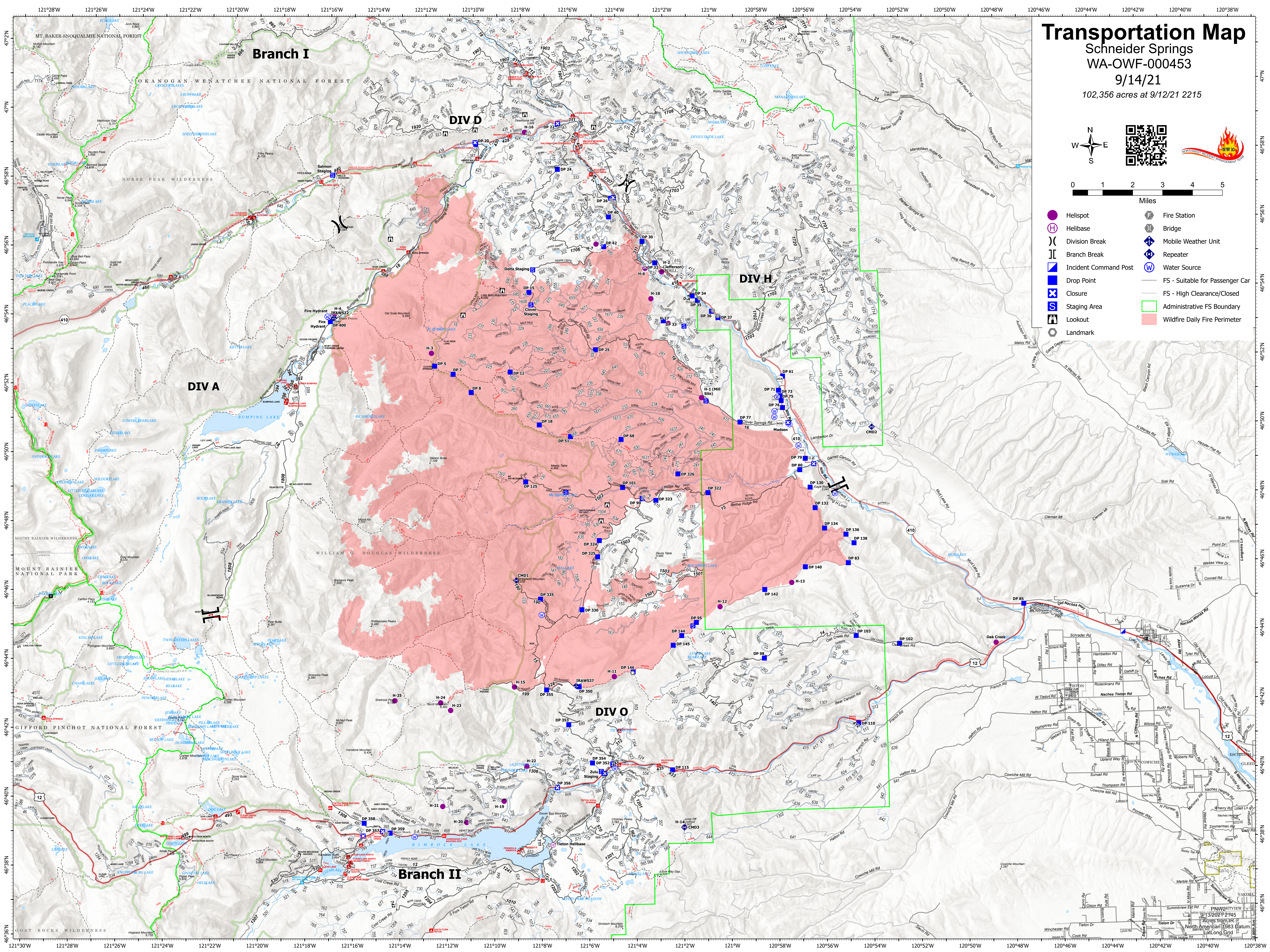
9/14/21

102,356 acres at 9/12/21 2215



Miles

- Helispot
- Helibase
- ⌋ Division Break
- ⌋ Branch Break
- ⌋ Incident Command Post
- Drop Point
- ⊗ Closure
- Ⓢ Staging Area
- ⌠ Lookout
- Landmark
- Ⓜ Fire Station
- ⌋ Bridge
- Ⓜ Mobile Weather Unit
- Ⓜ Repeater
- Ⓜ Water Source
- FS - Suitable for Passenger Car
- FS - High Clearance/Closed
- Administrative FS Boundary
- Wildfire Daily Fire Perimeter



PNW211VIEW
9/13/2021 2145
Acres from IR
North American 1983 Datum
LatLong Gtd