

Ownership

Schneider Springs
WA-OWF-000453
9/14/21

102,742 acres at 9/13/21 2235

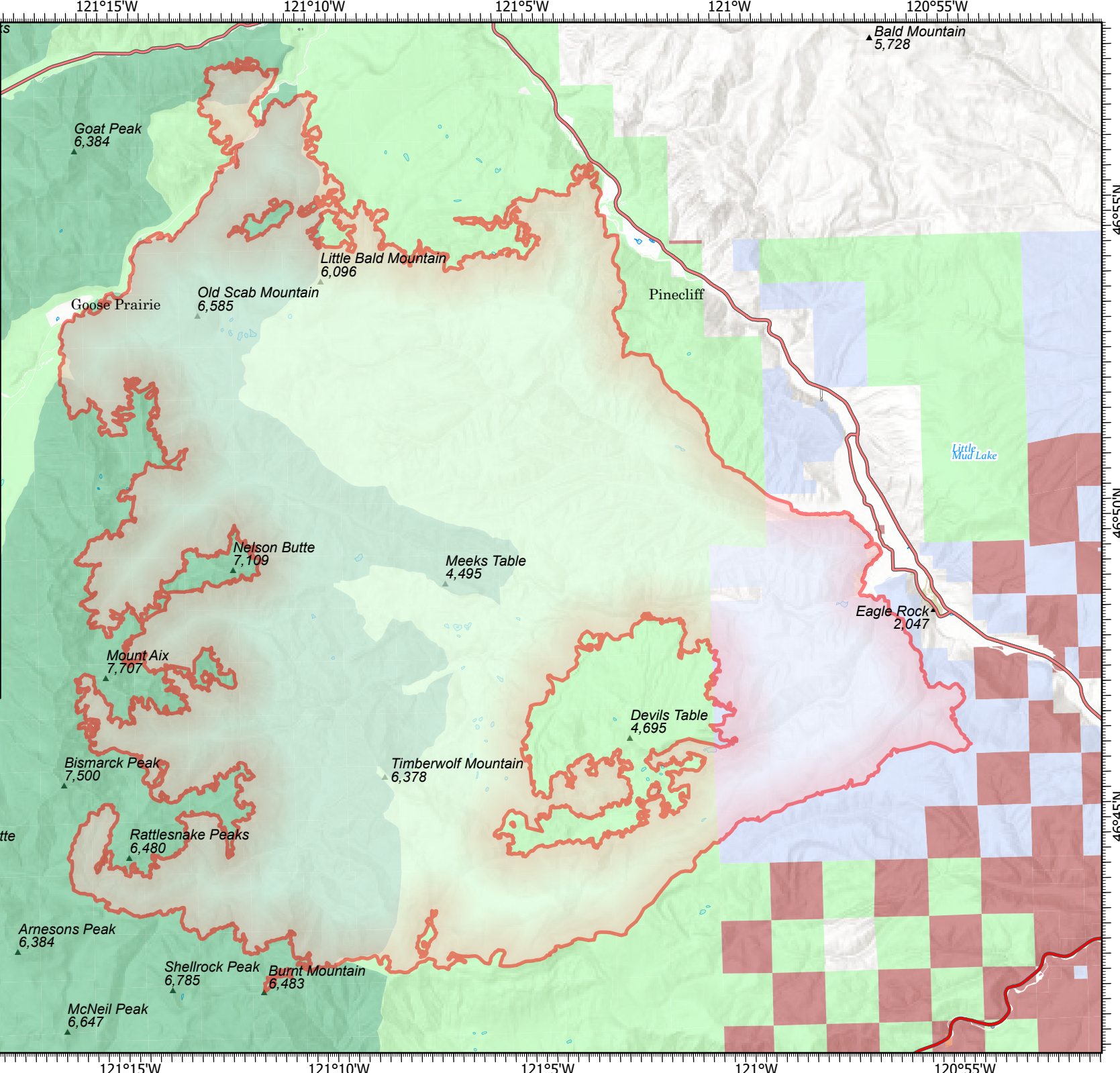


Miles

- ▬ Wildfire Daily Fire Perimeter
- ▬ US Bureau of Reclamation
- ▬ Forest Service: National Forest
- ▬ Forest Service: Wilderness Area
- ▬ Yakama Nation
- ▬ WA State Dept of Fish and Wildlife
- ▬ WA State Dept of Natural Resources
- ▬ WA State Dept of Transportation
- ▬ Private
- ▬ Other Federal Agencies

Ownership	Acres	Percent
WA-DNR	11,758.26	11.44
Private	501.96	0.49
Other Public (ROW)	10.62	0.01
USFS	47,899.42	46.62
USFS Wilderness	42,539.36	41.4
Other Public (Water)	32.09	0.03

PNW2
9/14/2021 1008ss
Acres from IR
North American 1983
Datum: LatLong Grid



Goat Peak
6,384

Bald Mountain
5,728

Little Bald Mountain
6,096

Goose Prairie

Old Scab Mountain
6,585

Pinecliff

Nelson Butte
7,109

Meeks Table
4,495

Eagle Rock
2,047

Mount Aix
7,707

Devils Table
4,695

Bismarck Peak
7,500

Timberwolf Mountain
6,378

Pear Butte
6,381

Rattlesnake Peaks
6,480

Arnesons Peak
6,384

Shellrock Peak
6,785

Burnt Mountain
6,483

McNeil Peak
6,647

Tumac Mountain
6,286

Little Mud Lake