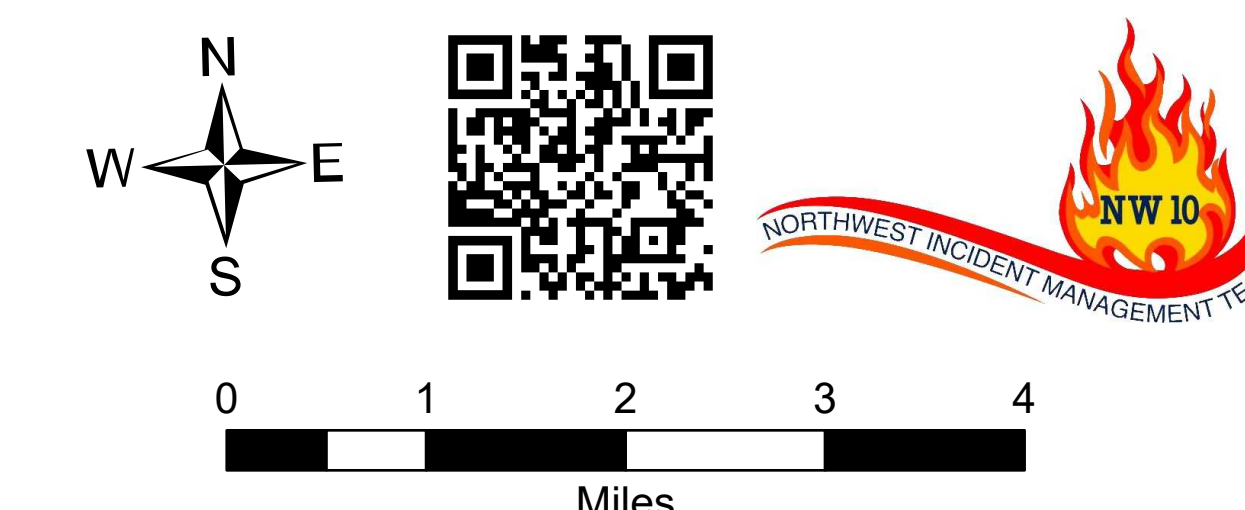


# Briefing Map

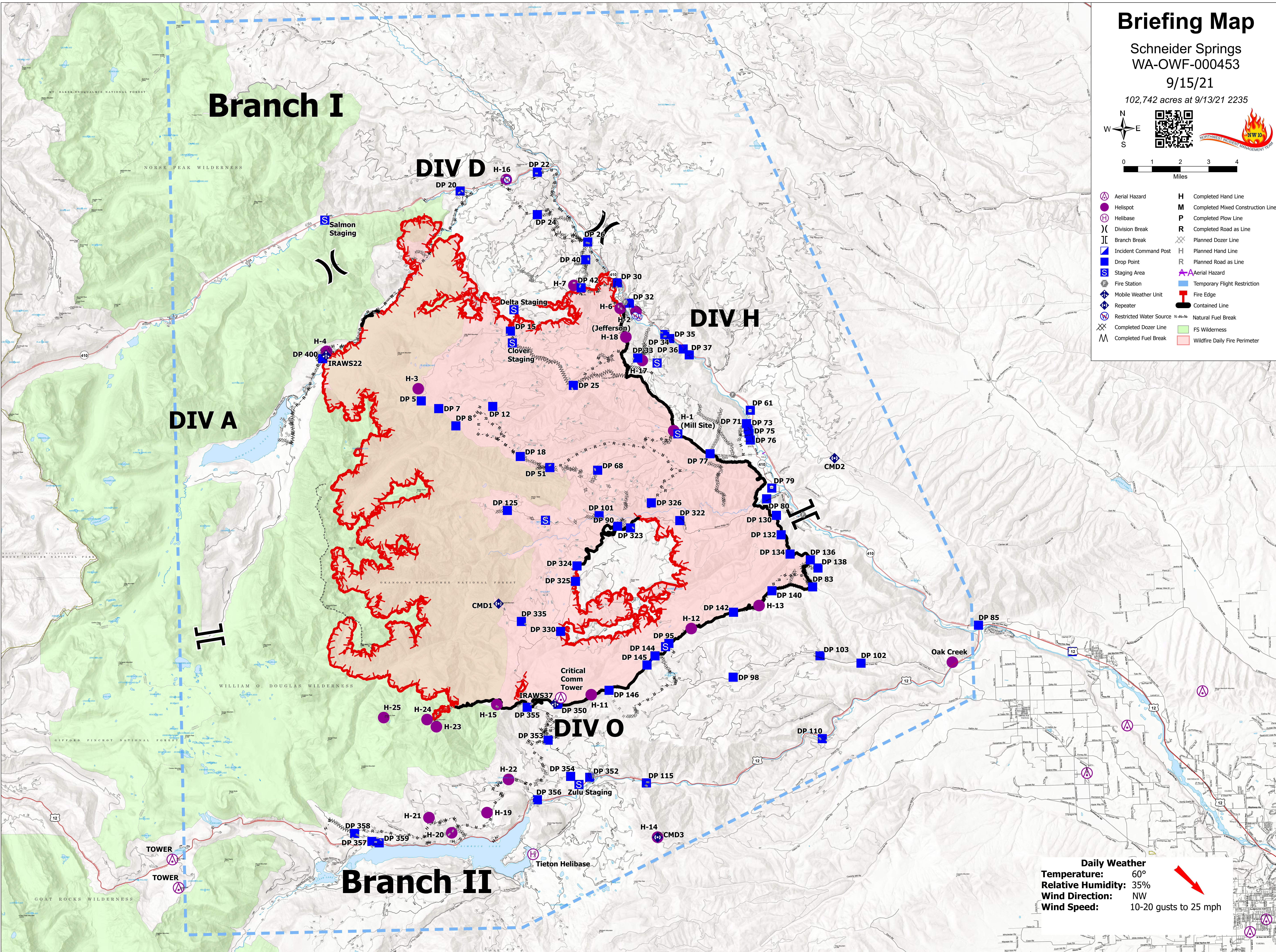
Schneider Springs  
WA-OWF-000453

9/15/21

102,742 acres at 9/13/21 2235



- |                           |                                     |
|---------------------------|-------------------------------------|
| ⊖ Aerial Hazard           | H Completed Hand Line               |
| ⊙ Helispot                | M Completed Mixed Construction Line |
| ⊕ Helibase                | P Completed Plow Line               |
| ⌋ Division Break          | R Completed Road as Line            |
| ⌌ Branch Break            | ⊗ Planned Dozer Line                |
| Ⓜ Incident Command Post   | H Planned Hand Line                 |
| Ⓜ Drop Point              | R Planned Road as Line              |
| Ⓜ Staging Area            | ⚡ Aerial Hazard                     |
| Ⓜ Fire Station            | Ⓜ Temporary Flight Restriction      |
| Ⓜ Mobile Weather Unit     | Ⓜ Fire Edge                         |
| Ⓜ Repeater                | Ⓜ Contained Line                    |
| Ⓜ Restricted Water Source | Ⓜ Natural Fuel Break                |
| Ⓜ Completed Dozer Line    | Ⓜ FS Wilderness                     |
| Ⓜ Completed Fuel Break    | Ⓜ Wildfire Daily Fire Perimeter     |



**Daily Weather**  
Temperature: 60°  
Relative Humidity: 35%  
Wind Direction: NW  
Wind Speed: 10-20 gusts to 25 mph

