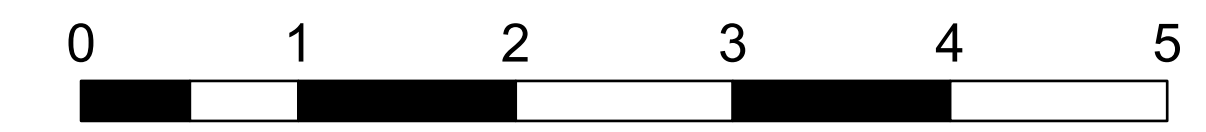
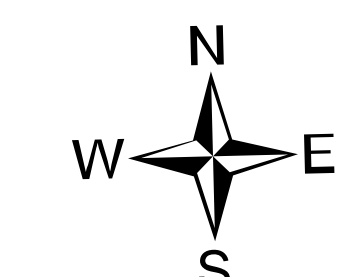


# Transportation Map

Schneider Springs  
WA-OWF-000453

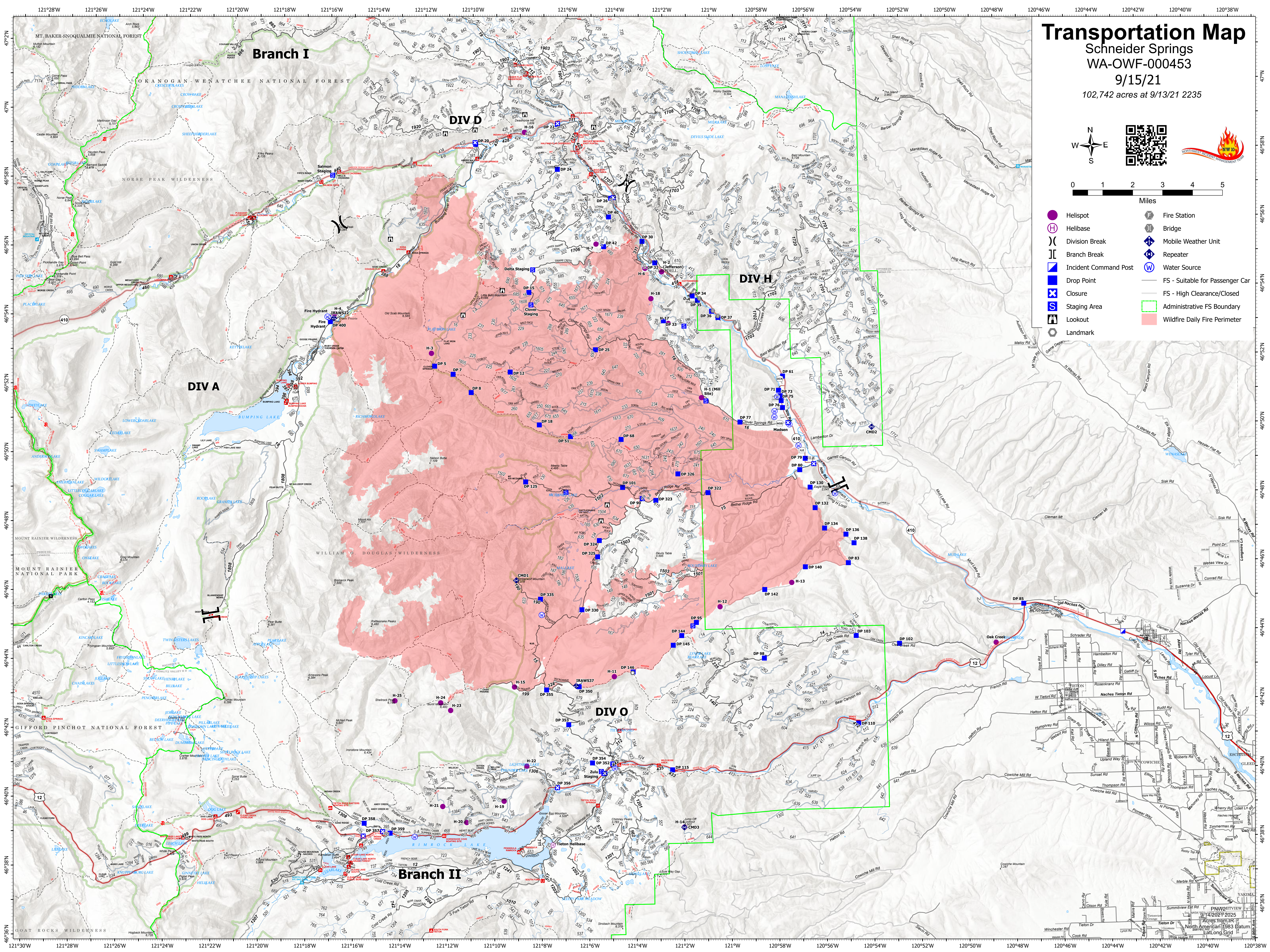
9/15/21

102,742 acres at 9/13/21 2235



Miles

- Helispot
- Helibase
- ⌋ Division Break
- ⌋ Branch Break
- ⌋ Incident Command Post
- Drop Point
- ⊗ Closure
- Ⓢ Staging Area
- ⌠ Lookout
- Landmark
- Ⓜ Fire Station
- ⌋ Bridge
- Ⓜ Mobile Weather Unit
- Ⓜ Repeater
- Ⓜ Water Source
- FS - Suitable for Passenger Car
- FS - High Clearance/Closed
- Administrative FS Boundary
- Wildfire Daily Fire Perimeter



Branch I

DIV D

DIV H

DIV A

DIV O

Branch II

PNW21VIEW  
9/14/2021 2025  
Acres from IR  
North American 1983 Datum  
at Long Gtd