

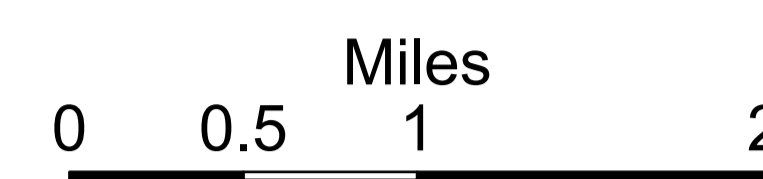
Div A

Ops Map

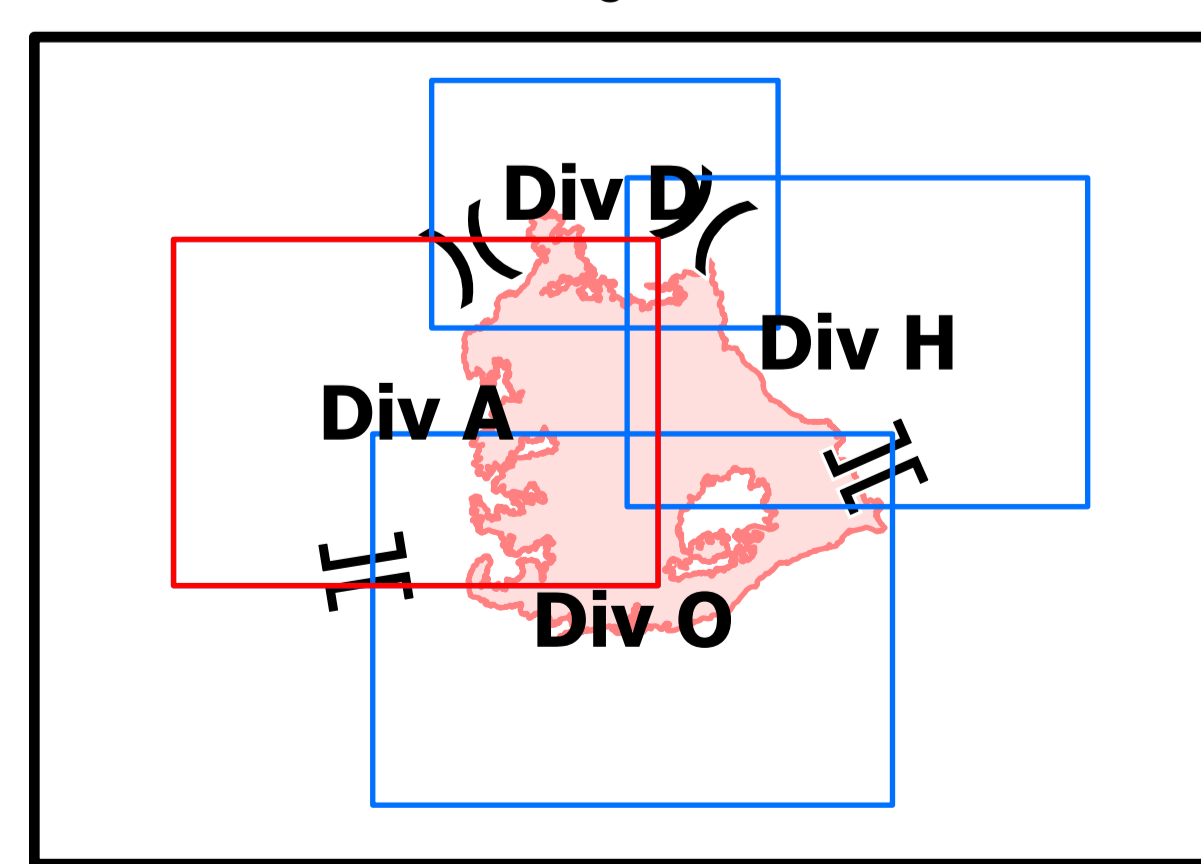
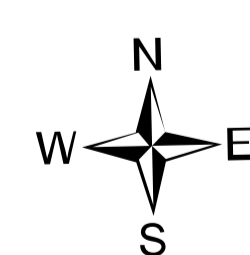
Schneider Springs
WA-OWF-000453

Division Map Book
9/15/21

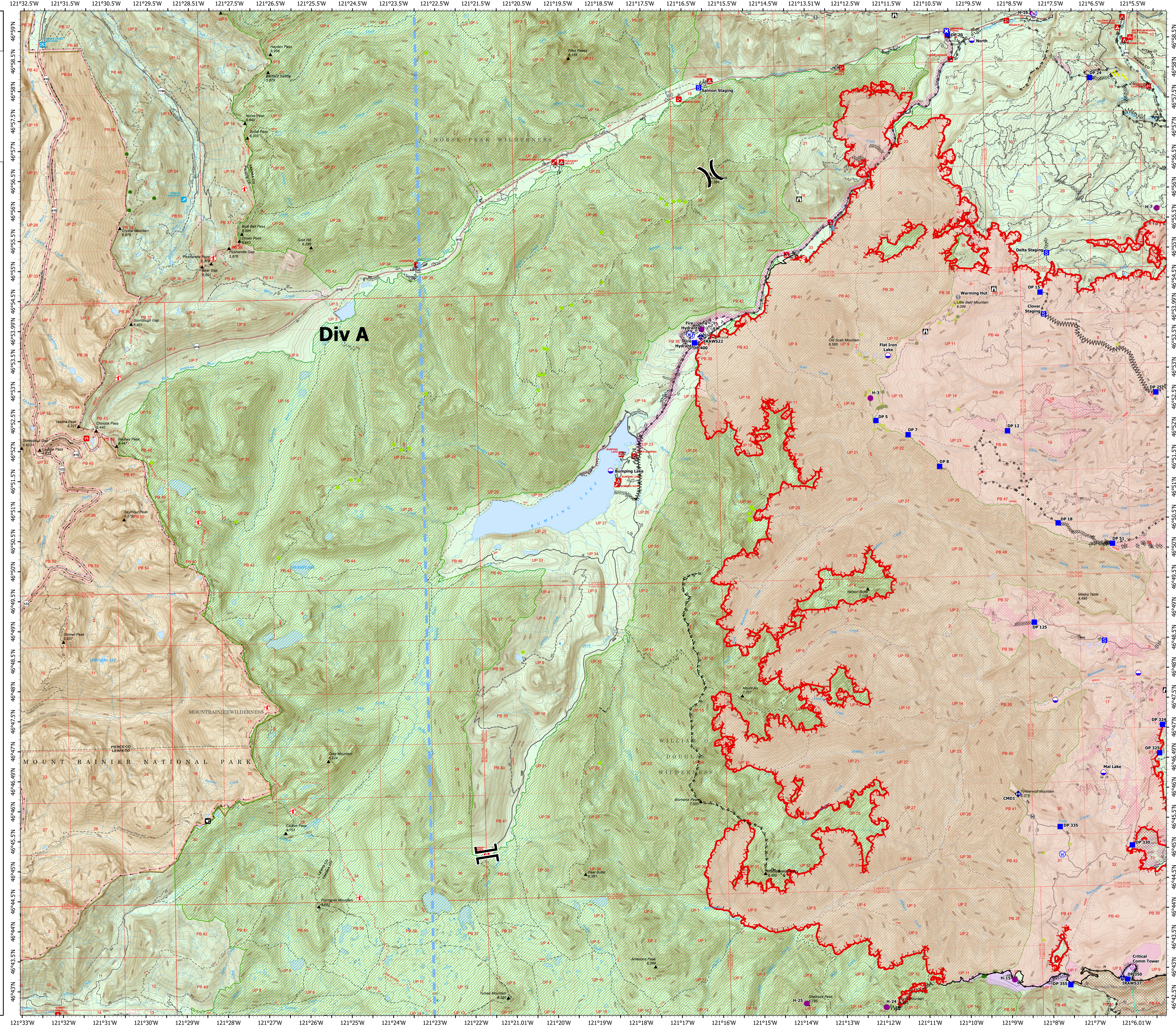


102,742 acres at 9/13/21 2235



- Aerial Hazard
- Dip Site
- HeliSpot
- Division Break
- Branch Break
- Drop Point
- Closure
- Staging Area
- Lookout
- Hot Spot - Spot Fire
- Value at Risk
- Bridge
- Mobile Weather Unit
- Repeater
- Water Source
- Restricted Water Source
- Completed Dozer Line
- Completed Fuel Break
- Completed Hand Line
- Completed Mixed Construction Line
- Completed Road as Line
- Planned Dozer Line
- Planned Hand Line
- Planned Road as Line
- Access or Improved Road
- Temporary Flight Restriction
- Fire Edge
- Contained Line
- Natural Fuel Break
- Other
- Wildfire Daily Fire Perimeter
- Structures
- Seed Trees
- Whitebark Pine Trees
- Campground
- Group Campground
- Picnic Site
- Boating Site
- Interpretive Site
- Ski Area Alpine
- Snowpark
- NPS Headquarters Office; Administrative Office; Patrol Cabin; Ranger Station
- Picnic Site
- Above Ground Power Lines
- State or PVT
- FS - Suitable for Passenger Car
- FS - High Clearance/Closed
- African Wiregrass
- Whitebark Pine Polygons
- Resource Concern
- Fire Fuels Treatments
- Mechanical Fuels Treatments
- DNR Fuel Treatments
- Federal Wilderness Boundary
- Approved or Proclaimed NPS Boundary
- Federal Wilderness Boundary
- Forest Service Land
- National Park Service Lands
- Other Federal Lands



9/14/2021 2046
North American 1983 Datum. Lat,Long
Grid



121°33'W 121°32'W 121°31'W 121°30'W 121°29'W 121°28'W 121°27'W 121°26'W 121°25'W 121°24'W 121°23'W 121°22'W 121°21.01'W 121°20'W 121°19'W 121°18'W 121°17'W 121°16'W 121°15'W 121°14'W 121°13'W 121°12'W 121°11'W 121°10'W 121°9'W 121°8'W 121°7'W 121°6.01'W