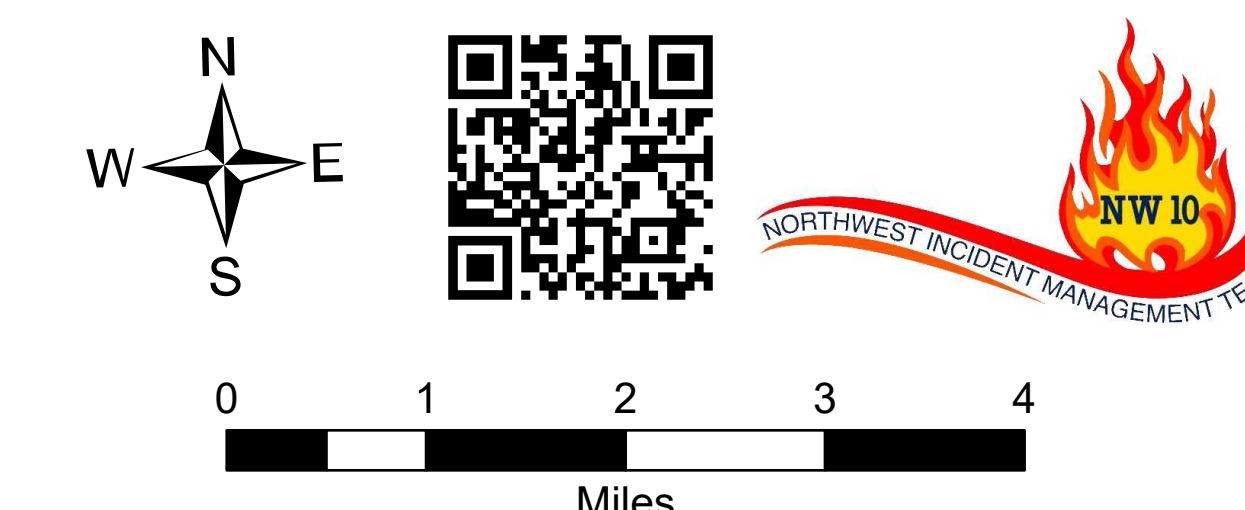


# Briefing Map

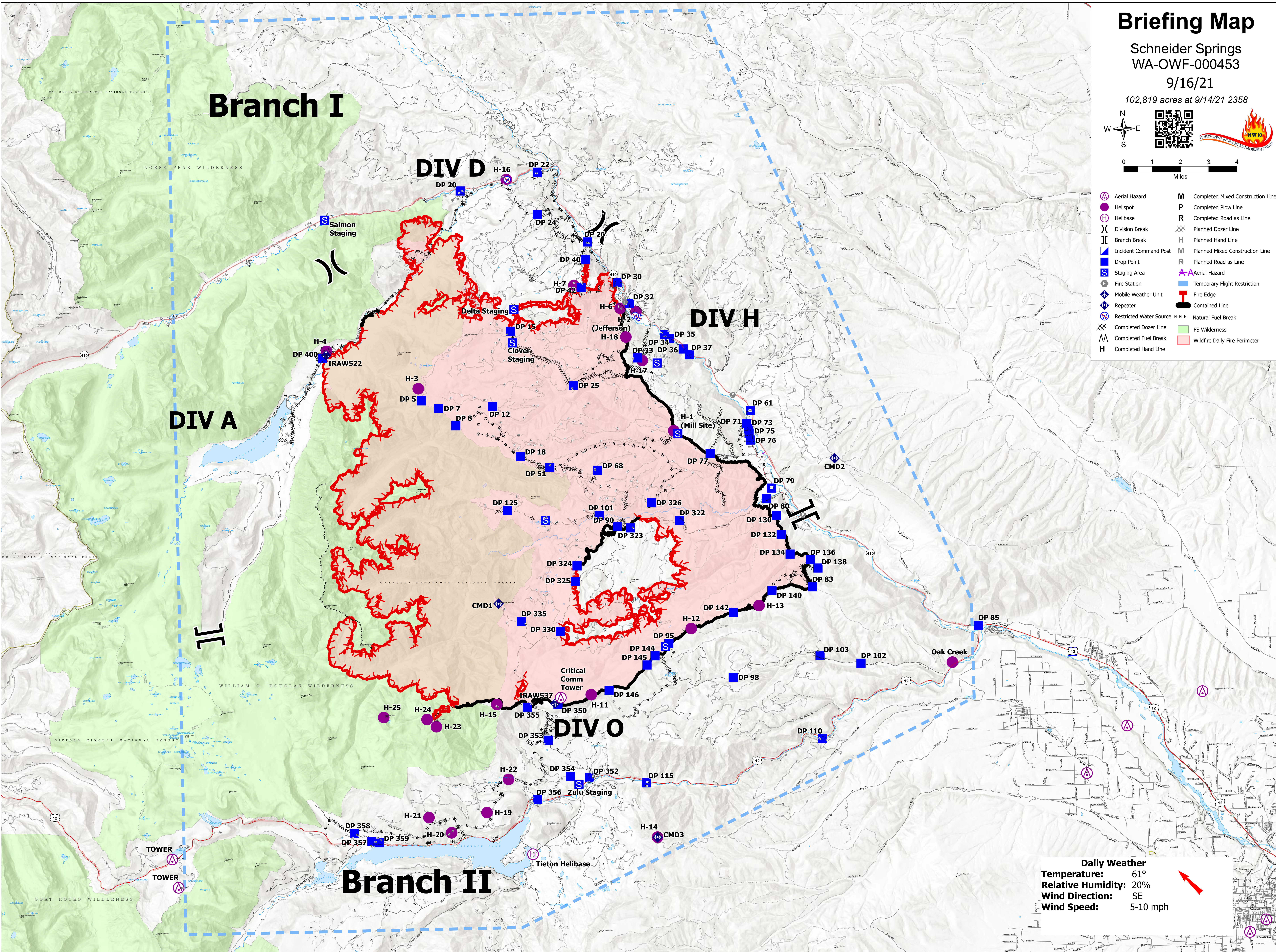
Schneider Springs  
WA-OWF-000453

9/16/21

102,819 acres at 9/14/21 2358



- |  |                         |  |                                   |
|--|-------------------------|--|-----------------------------------|
|  | Aerial Hazard           |  | Completed Mixed Construction Line |
|  | Helispot                |  | Completed Plow Line               |
|  | Helibase                |  | Completed Road as Line            |
|  | Division Break          |  | Planned Dozer Line                |
|  | Branch Break            |  | Planned Hand Line                 |
|  | Incident Command Post   |  | Planned Mixed Construction Line   |
|  | Drop Point              |  | Planned Road as Line              |
|  | Staging Area            |  | Aerial Hazard                     |
|  | Fire Station            |  | Temporary Flight Restriction      |
|  | Mobile Weather Unit     |  | Fire Edge                         |
|  | Repeater                |  | Contained Line                    |
|  | Restricted Water Source |  | Natural Fuel Break                |
|  | Completed Dozer Line    |  | FS Wilderness                     |
|  | Completed Fuel Break    |  | Wildfire Daily Fire Perimeter     |
|  | Completed Hand Line     |  |                                   |



**Daily Weather**  
Temperature: 61°  
Relative Humidity: 20%  
Wind Direction: SE  
Wind Speed: 5-10 mph

