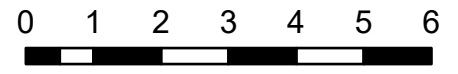


IAP Map Index

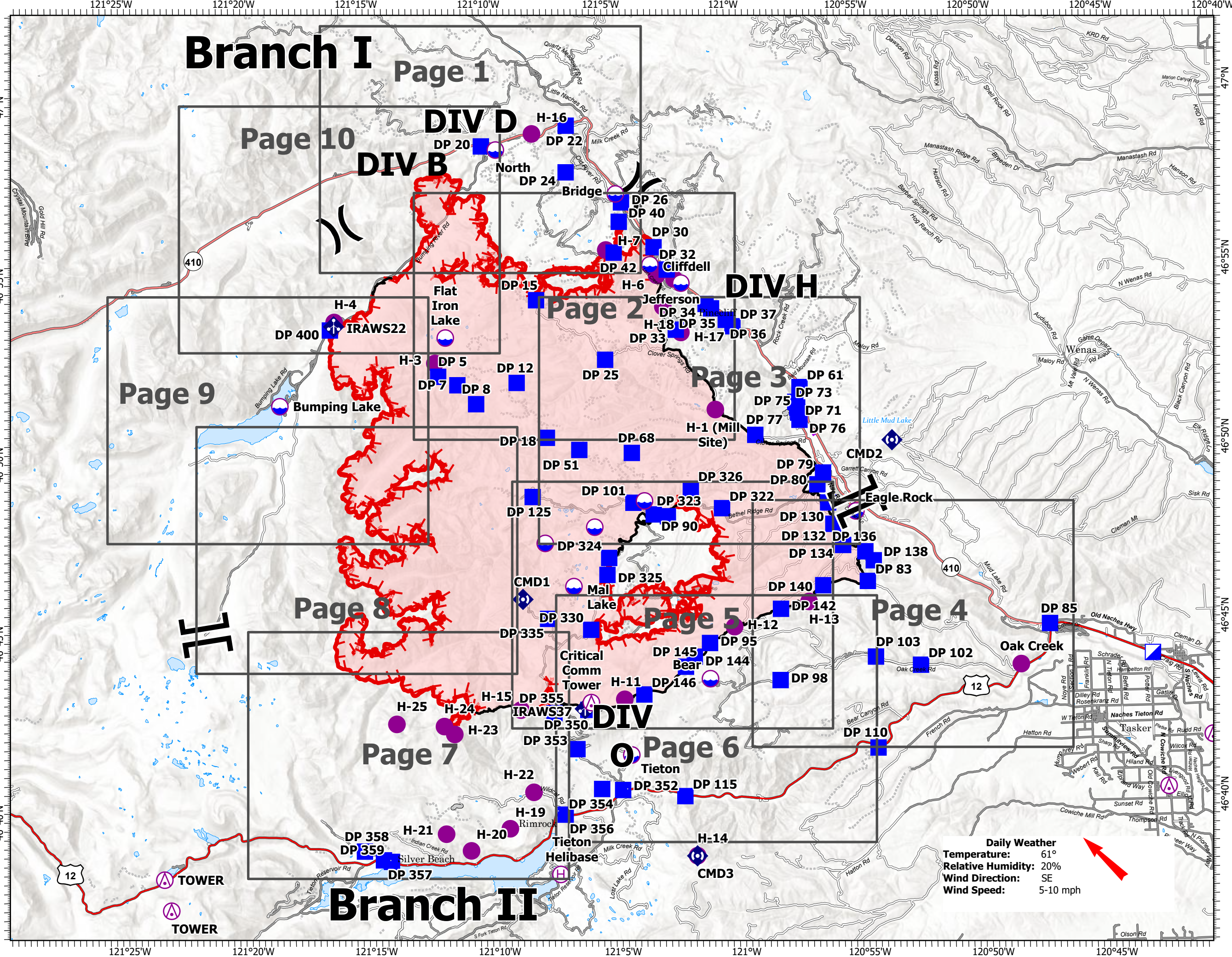
Schneider Springs
WA-OWF-000453

9/16/21

102,819 acres at 9/14/21 2358



- Miles
- Aerial Hazard
- Dip Site
- Helispot
- Helibase
- Division Break
- Branch Break
- Incident Command Post
- Drop Point
- Mobile Weather Unit
- Repeater
- Access or Improved Road
- Aerial Hazard
- Fire Edge
- Contained Line
- Wildfire Daily Fire Perimeter
- Grid Index



Daily Weather
Temperature: 61°
Relative Humidity: 20%
Wind Direction: SE
Wind Speed: 5-10 mph



NW 10
9/15/2021 2021
Acres from intel
North American 1983 Datum.
Lat/Long Grid



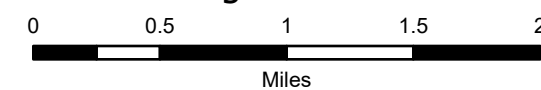
IAP Map

Schneider Springs
WA-OWF-000453

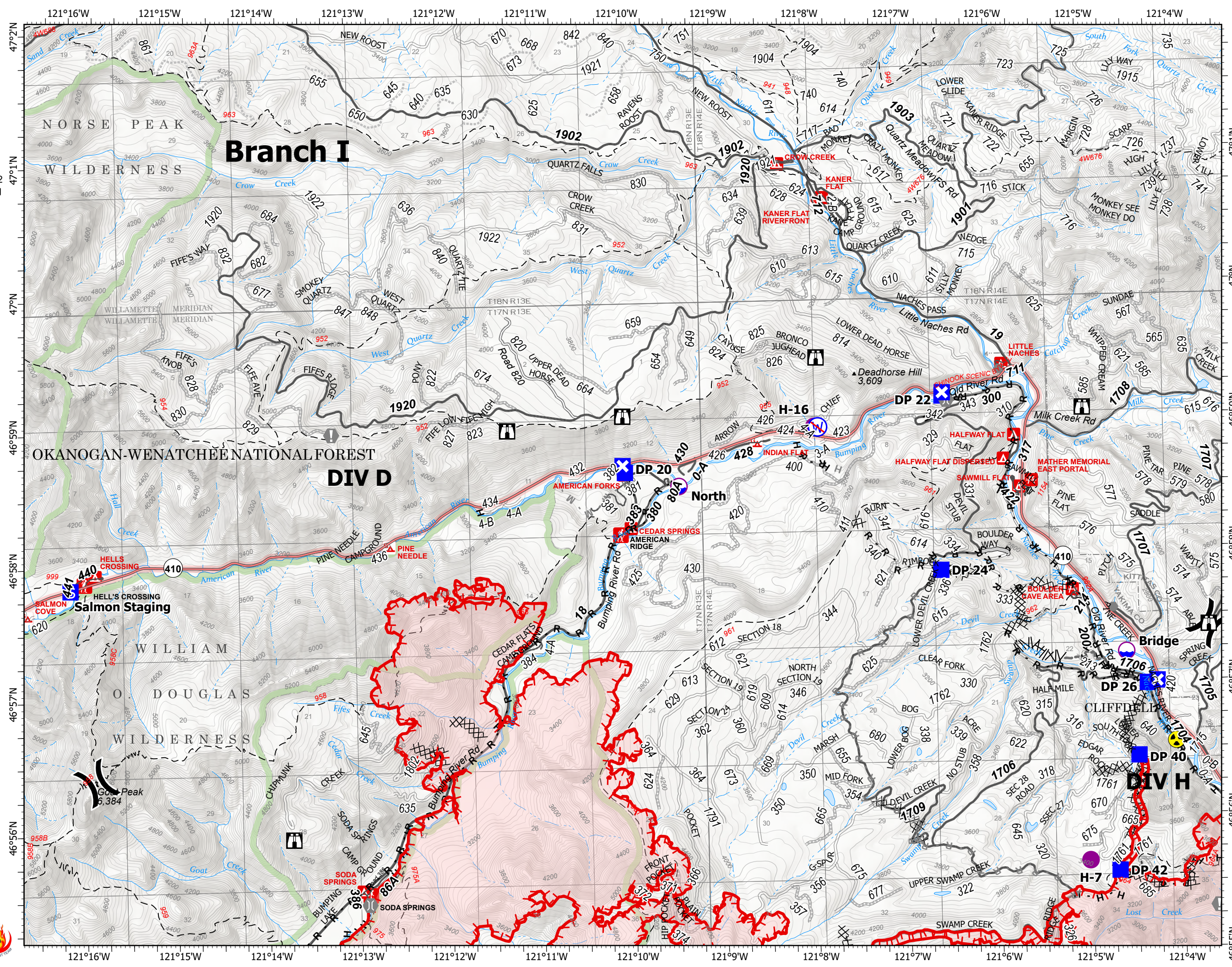
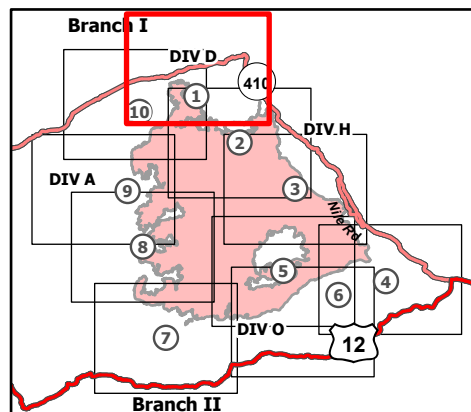
9/16/21

102,819 acres at 9/14/21 2358

Page 1 of 10



- Dip Site
- Helispot
- Division Break
- Drop Point
- Closure
- Staging Area
- Lookout
- Value at Risk
- Other
- Bridge
- Hazard
- Restricted Water Source
- Completed Dozer Line
- Completed Fuel Break
- H - Completed Hand Line
- R - Completed Road as Line
- Planned Dozer Line
- H - Planned Hand Line
- M - Planned Mixed Construction Line
- R - Planned Road as Line
- Access or Improved Road
- Other
- Fire Edge
- Administrative FS Boundary
- FS Wilderness Boundary
- Wildfire Daily Fire Perimeter



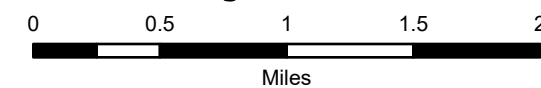
IAP Map

Schneider Springs
WA-OWF-000453

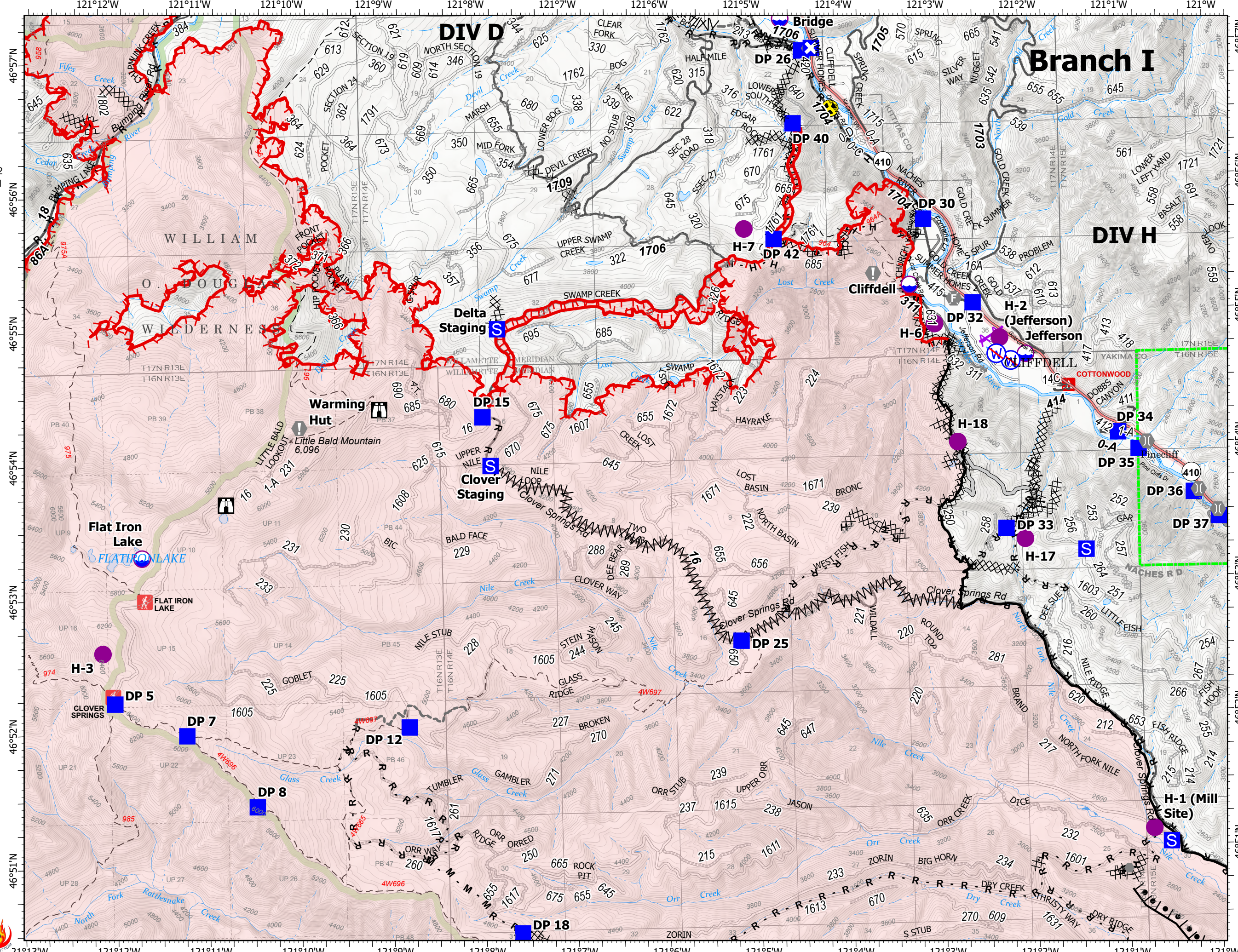
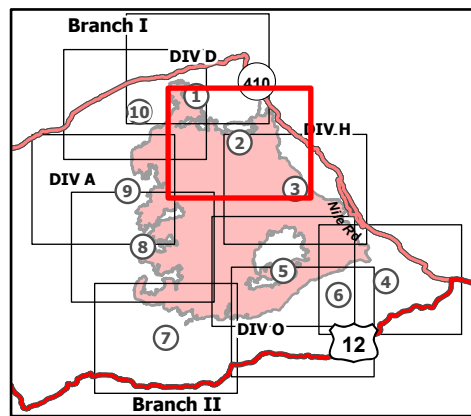
9/16/21

102,819 acres at 9/14/21 2358

Page 2 of 10



- Dip Site
- Helispot
- Division Break
- Drop Point
- Closure
- Staging Area
- Lookout
- Value at Risk
- Other
- Fire Station
- Bridge
- Hazard
- Restricted Water Source
- Completed Burnout
- Completed Dozer Line
- Completed Fuel Break
- Completed Hand Line
- Completed Mixed Construction Line
- Planned Dozer Line
- Planned Hand Line
- Planned Road as Line
- Access or Improved Road
- Other
- Aerial Hazard
- Fire Edge
- Contained Line
- Administrative FS Boundary
- FS Wilderness Boundary
- Wildfire Daily Fire Perimeter



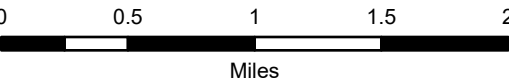
IAP Map

Schneider Springs
WA-OWF-000453

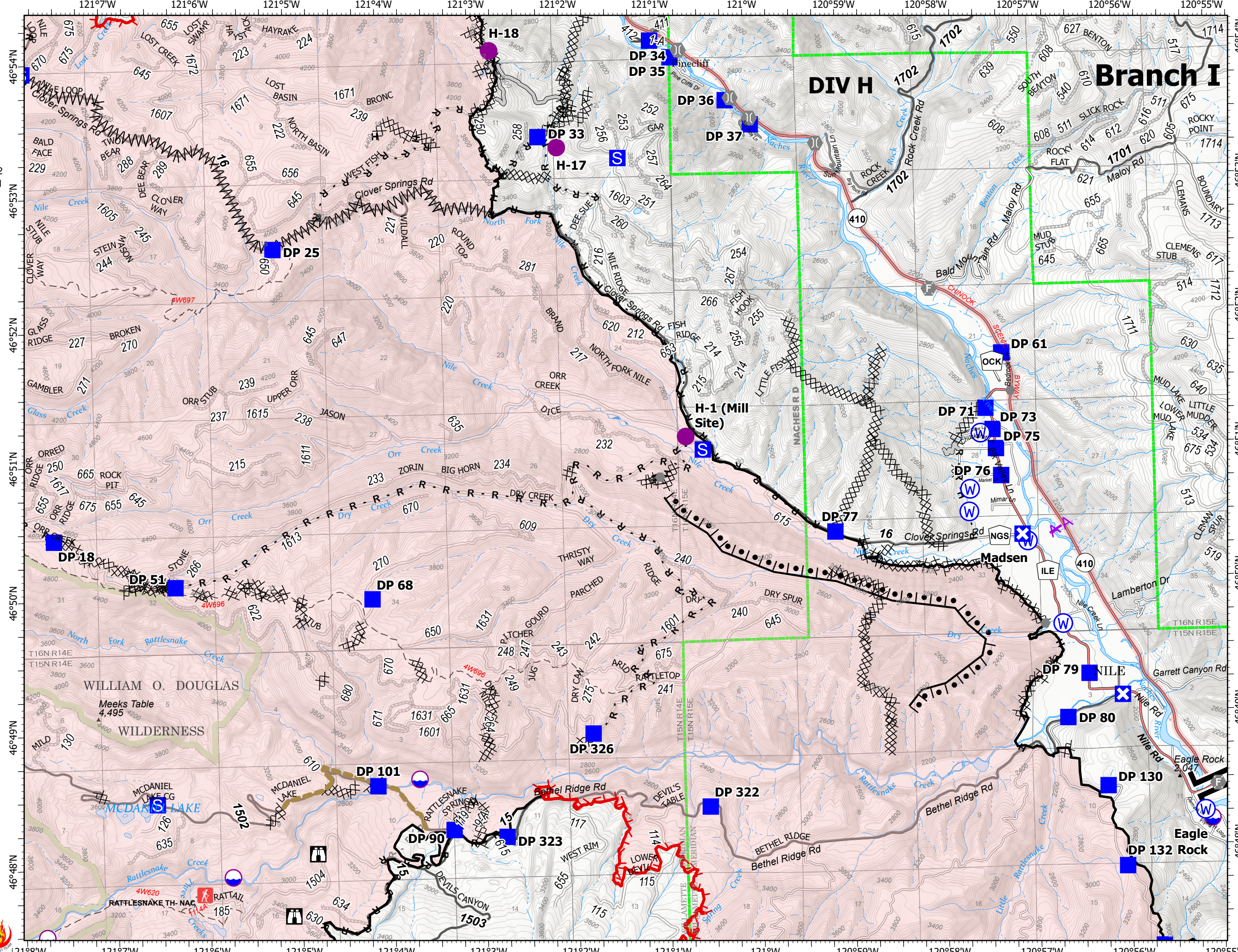
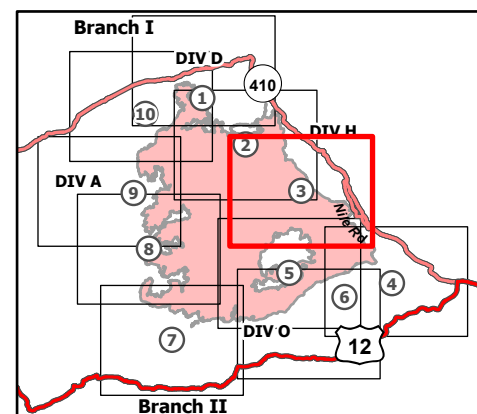
9/16/21

102,819 acres at 9/14/21 2358

Page 3 of 10



- Dip Site
- Helispot
- | Branch Break
- Drop Point
- ⊠ Closure
- Staging Area
- ⊠ Lookout
- Other
- Fire Station
- Bridge
- ⊙ Water Source
- ⊙ Completed Burnout
- ⊠ Completed Dozer Line
- ⊠ Completed Fuel Break
- H Completed Hand Line
- M Completed Mixed Construction Line
- R Completed Road as Line
- R Planned Road as Line
- Access or Improved Road
- Road Repair
- ✈ Aerial Hazard
- Fire Edge
- Contained Line
- ⊠ Administrative FS Boundary
- ⊠ FS Wilderness Boundary
- ⊠ Wildfire Daily Fire Perimeter



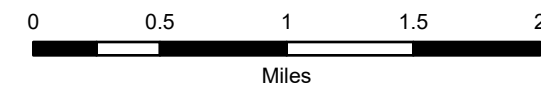
IAP Map

Schneider Springs
WA-OWF-000453

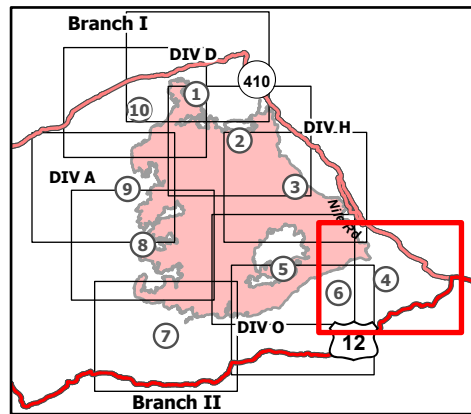
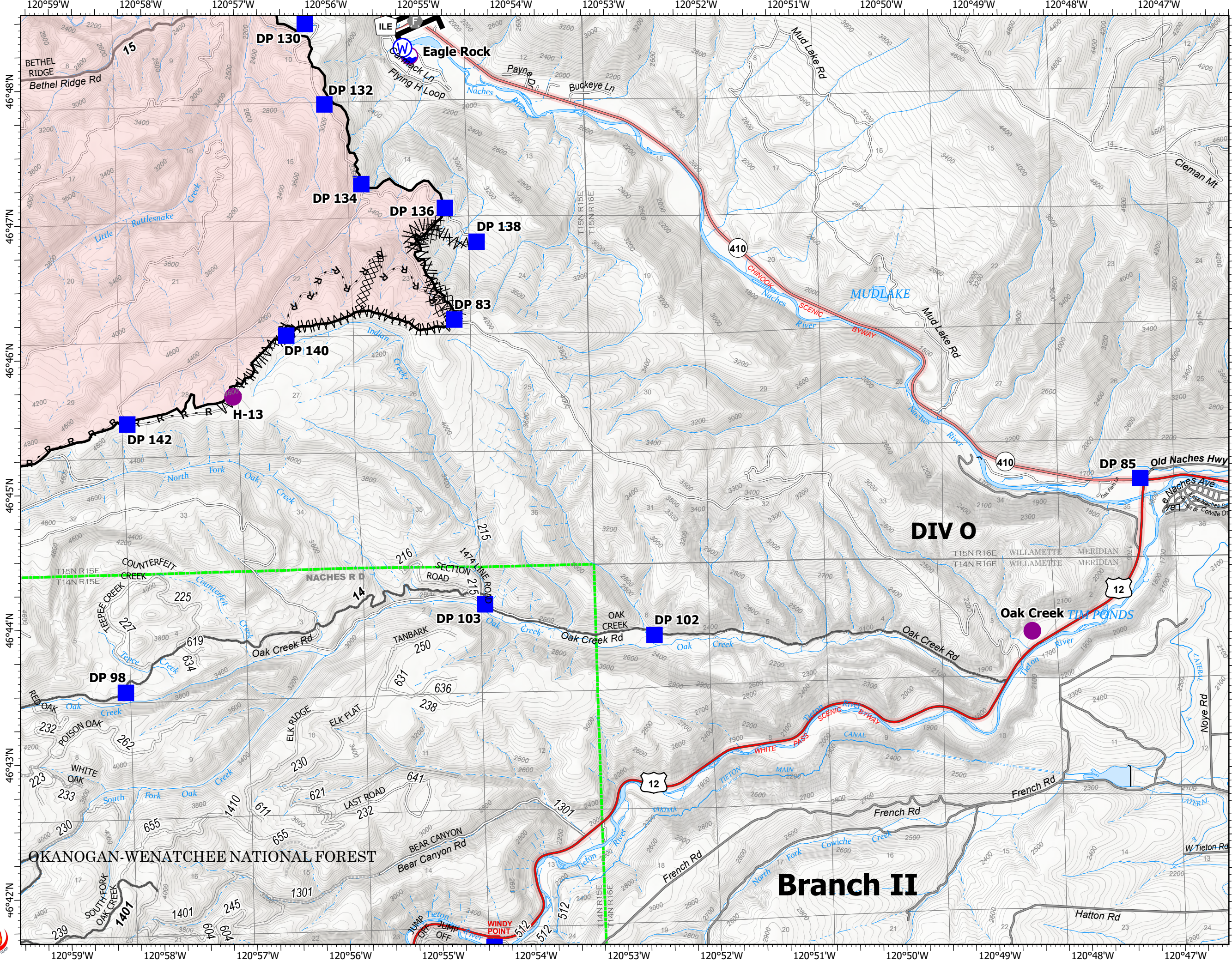
9/16/21

102,819 acres at 9/14/21 2358

Page 4 of 10



- Dip Site
- Helispot
- Branch Break
- Drop Point
- Fire Station
- Water Source
- Completed Dozer Line
- Completed Fuel Break
- Completed Road as Line
- Contained Line
- Administrative FS Boundary
- Wildfire Daily Fire Perimeter



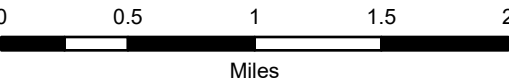
IAP Map

Schneider Springs
WA-OWF-000453

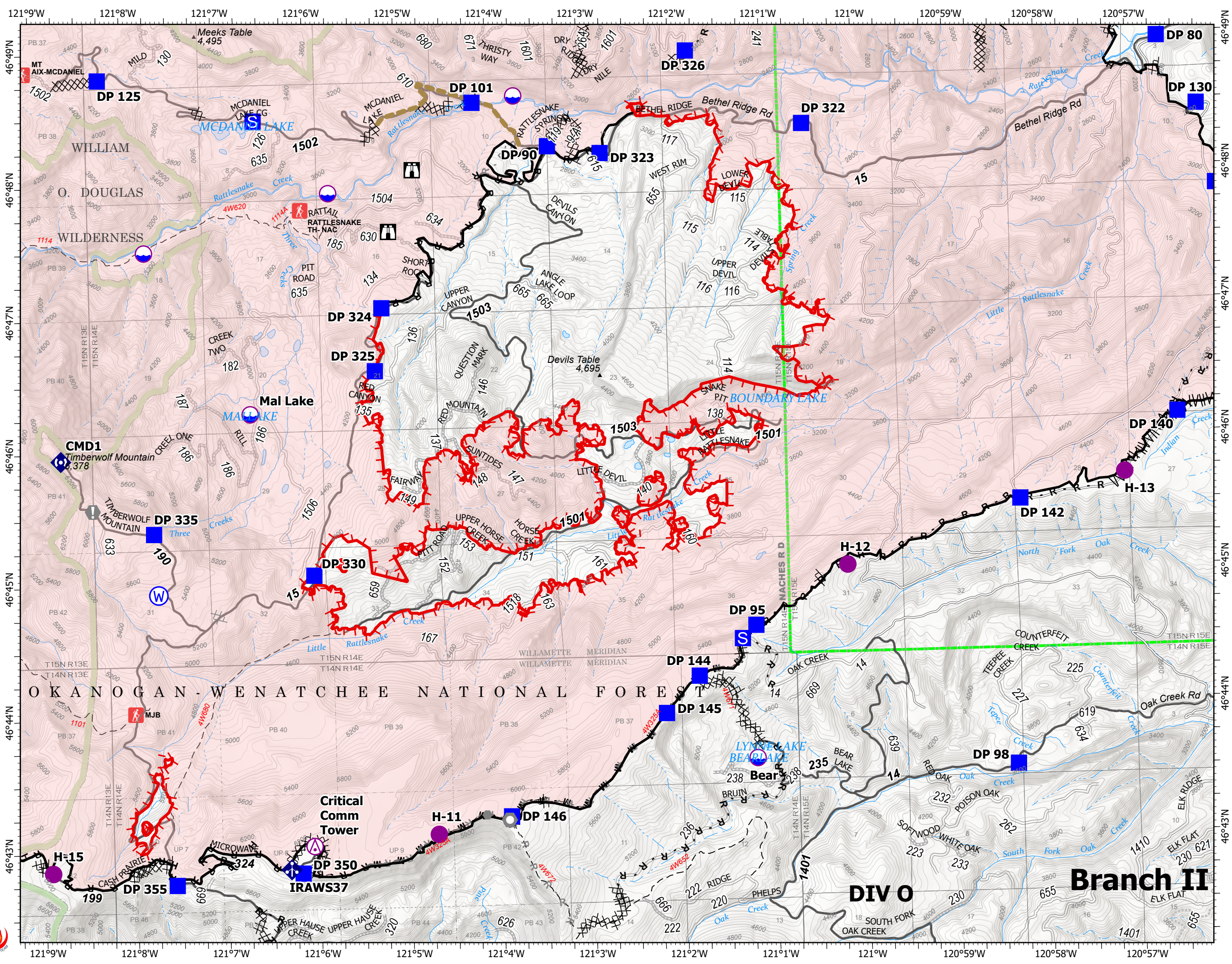
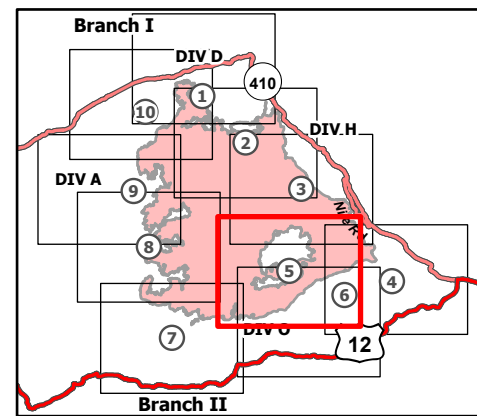
9/16/21

102,819 acres at 9/14/21 2358

Page 5 of 10



- Aerial Hazard
- Dip Site
- Helispot
- Drop Point
- Closure
- Staging Area
- Lookout
- Value at Risk
- Other
- Landmark
- Mobile Weather Unit
- Repeater
- Water Source
- Completed Burnout
- Completed Dozer Line
- Completed Fuel Break
- Completed Hand Line
- Completed Mixed Construction Line
- Completed Plow Line
- Completed Road as Line
- Planned Dozer Line
- Planned Road as Line
- Other
- Road Repair
- Fire Edge
- Contained Line
- Administrative FS Boundary
- FS Wilderness Boundary
- Wildfire Daily Fire Perimeter



Branch II

DIV O

Critical
Comm
Tower

IRAWS37

OKANOGAN-WENATCHEE NATIONAL FOREST

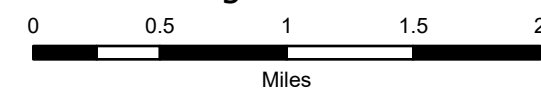
IAP Map

Schneider Springs
WA-OWF-000453

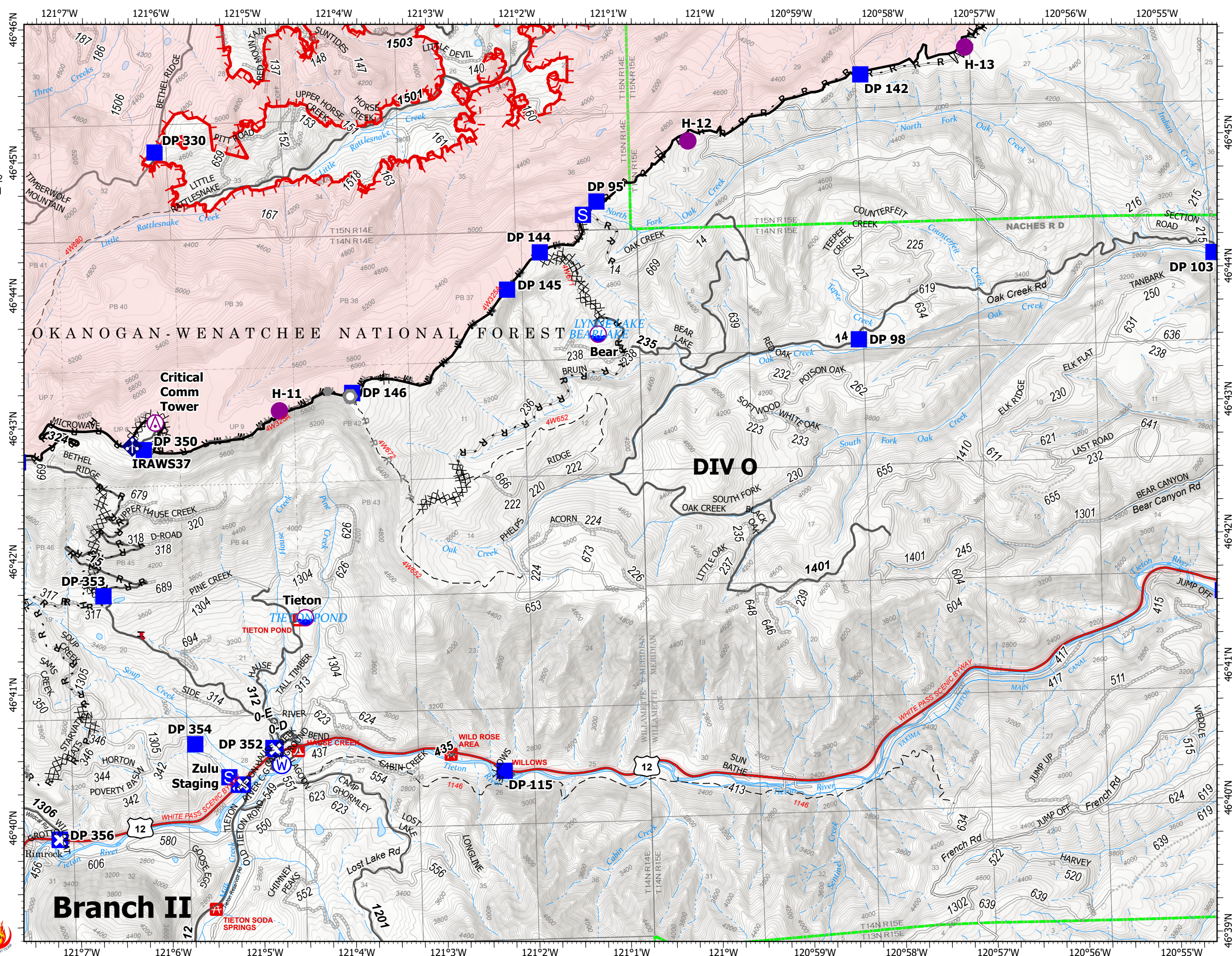
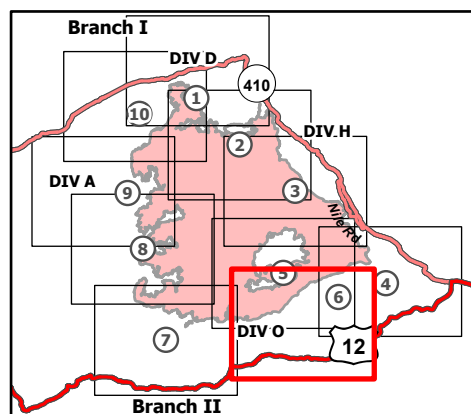
9/16/21

102,819 acres at 9/14/21 2358

Page 6 of 10



- ⊙ Aerial Hazard
- Dip Site
- Helispot
- Drop Point
- ⊠ Closure
- ⊠ Staging Area
- Other
- Landmark
- ⚡ Mobile Weather Unit
- ⊙ Water Source
- ⊠ Completed Dozer Line
- ⊠ Completed Fuel Break
- H Completed Hand Line
- M Completed Mixed Construction Line
- P Completed Plow Line
- R Completed Road as Line
- ⊠ Planned Dozer Line
- H Planned Hand Line
- R Planned Road as Line
- - - Fence
- - - Other
- ▬ Fire Edge
- ▬ Contained Line
- ▬ Administrative FS Boundary
- ▬ Wildfire Daily Fire Perimeter



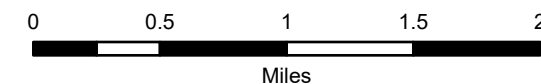
IAP Map

Schneider Springs
WA-OWF-000453

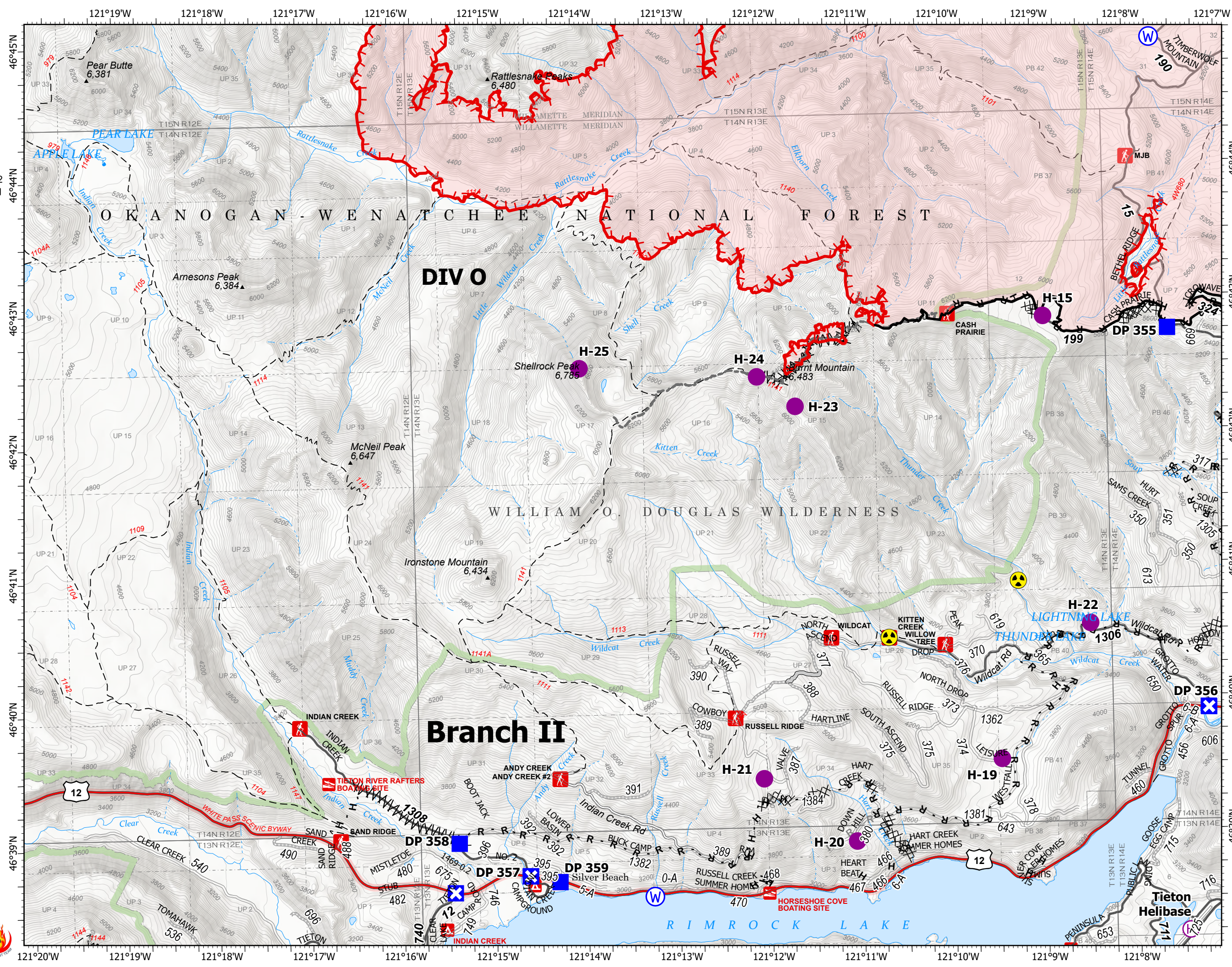
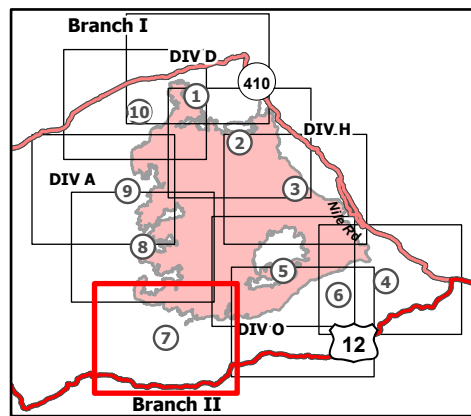
9/16/21

102,819 acres at 9/14/21 2358

Page 7 of 10



- Helispot
- ⊕ Helibase
- Drop Point
- ⊗ Closure
- ⚠ Hazard
- ⊙ Water Source
- - - Completed Dozer Line
- = Completed Fuel Break
- H Completed Hand Line
- R Completed Road as Line
- - - Planned Dozer Line
- R Planned Road as Line
- Access or Improved Road
- - - Other
- Fire Edge
- Contained Line
- Administrative FS Boundary
- FS Wilderness Boundary
- Wildfire Daily Fire Perimeter



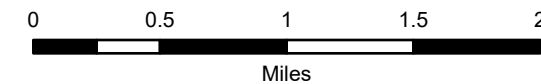
IAP Map

Schneider Springs
WA-OWF-000453

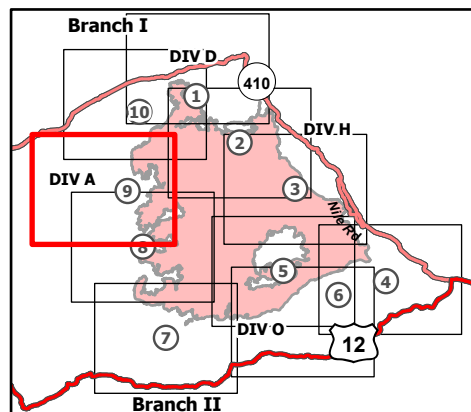
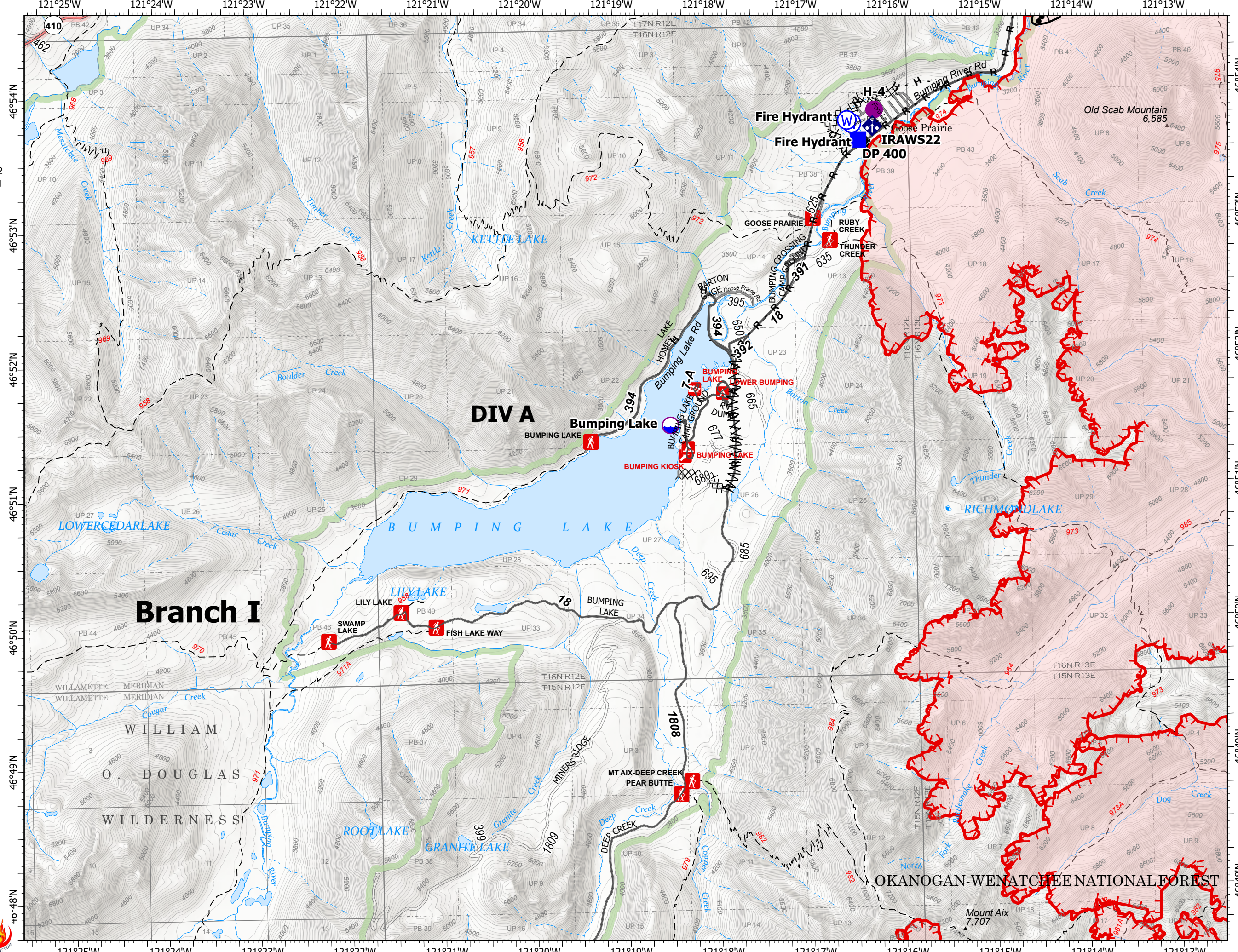
9/16/21

102,819 acres at 9/14/21 2358

Page 9 of 10



- Dip Site
- Helispot
- Drop Point
- Mobile Weather Unit
- Water Source
- Completed Burnout
- Completed Dozer Line
- Completed Fuel Break
- Completed Hand Line
- Completed Road as Line
- Planned Hand Line
- Fire Edge
- Contained Line
- Administrative FS Boundary
- FS Wilderness Boundary
- Wildfire Daily Fire Perimeter



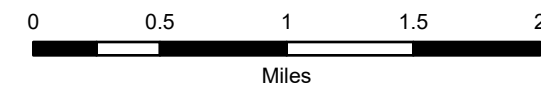
IAP Map

Schneider Springs
WA-OWF-000453

9/16/21

102,819 acres at 9/14/21 2358

Page 10 of 10



- Dip Site
- Helisport
- Division Break
- Drop Point
- Closure
- Staging Area
- Lookout
- Hot Spot - Spot Fire
- Value at Risk
- Bridge
- Mobile Weather Unit
- Water Source
- Completed Burnout
- Completed Dozer Line
- Completed Hand Line
- Completed Road as Line
- Planned Hand Line
- Planned Mixed Construction Line
- Fire Edge
- Contained Line
- Administrative FS Boundary
- FS Wilderness Boundary
- Wildfire Daily Fire Perimeter

