

# Div O

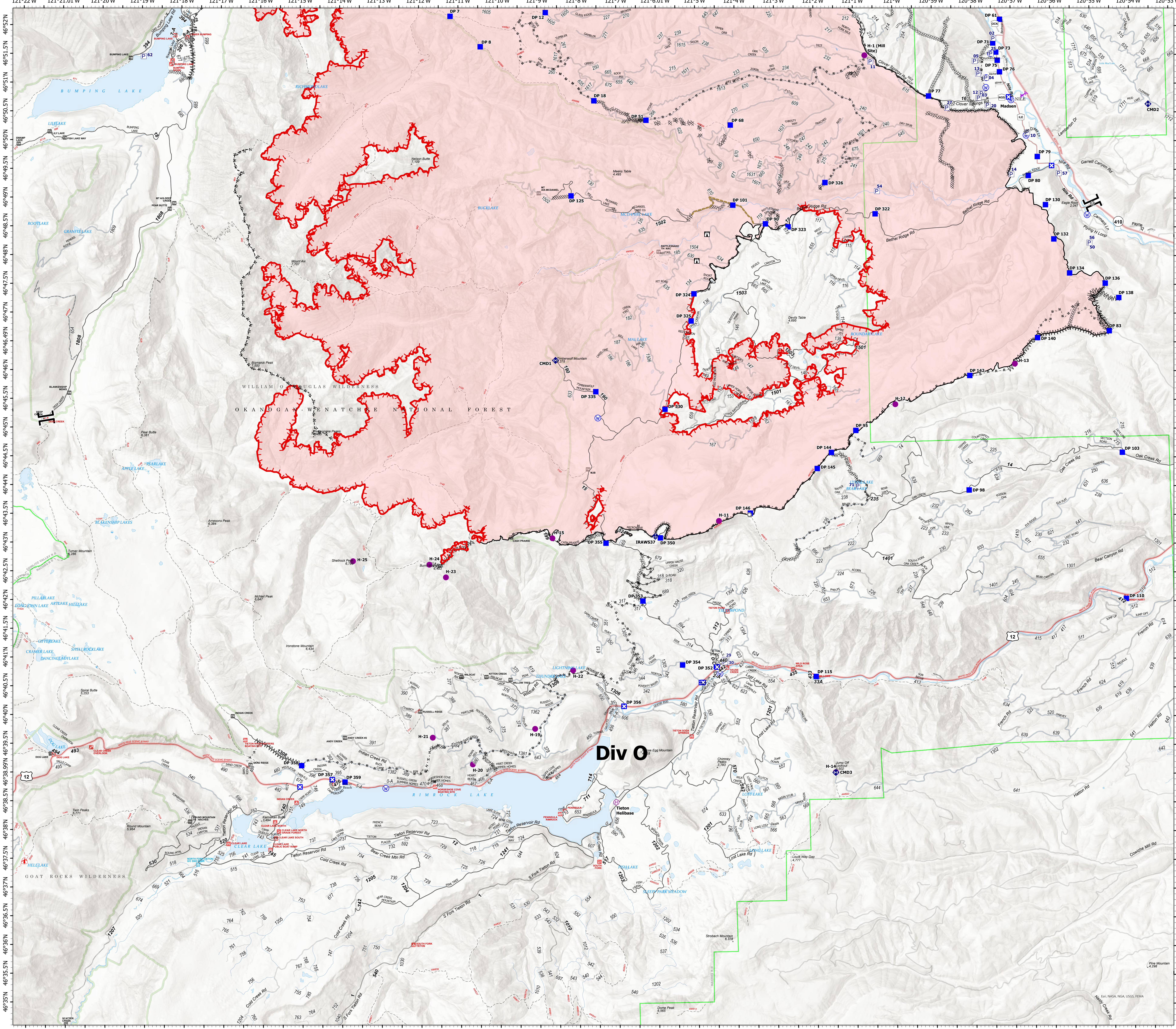
## Accountable Property

Schneider Springs  
WA-OWF-000453  
Division Map Book  
9/17/21  
102,910 acres at 9/16/21 1730


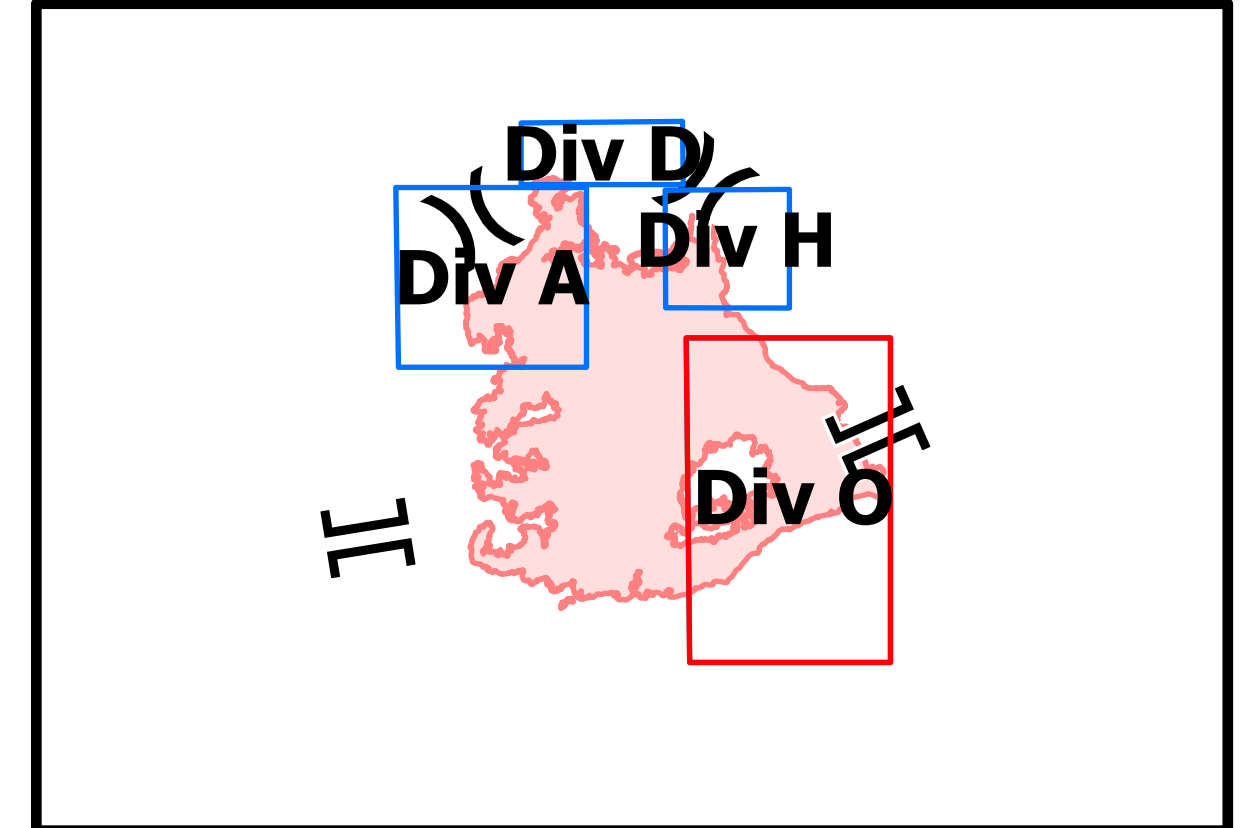
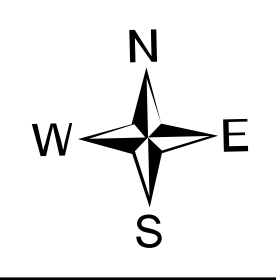


### Natural Fuel Break

- Pump
- Accountable Property - Returned to Cache Table Only
- Helispot
- Helibase
- Branch Break
- Drop Point
- Closure
- Lookout
- Landmark
- Fire Station
- Mobile Weather Unit
- Repeater
- Water Source
- Completed Dozer Line
- Completed Fuel Break
- Completed Hand Line
- Completed Mixed Construction Line
- Completed Plow Line
- Completed Road as Line
- Access or Improved Road
- Road Repair
- Aerial Hazard
- Fire Edge
- Contained Line
- FS - Suitable for Passenger Car
- FS - High Clearance/Closed
- Wildfire Daily Fire Perimeter
- FS Common Unit Names
- Gap; Summit
- GNIS Populated Places Some
- Campground
- Group Campground
- Trailhead
- Picnic Site
- Boating Site
- Interpretive Site
- Snowpark
- National Designated Trail
- Trail
- National Designated Trail
- Tunnel; Bridge
- Primary Highway
- Secondary Highway
- Paved Roads
- Dirt (Not Paved)
- Paved Road
- Gravel Road
- Dirt Roads
- Unimproved Roads
- Closed Roads
- Runway
- Bay/Inlet
- Stream / River
- Proclaimed FS Boundary
- Administrative FS Boundary
- Ranger District Boundary
- FS Wilderness Boundary
- State Boundary
- County Boundary
- Census Designated Place
- Lake / Pond
- Lake / Pond (Intermittent)
- Scenic Byway
- World Hillshade



# Div O



9/16/2021 2120  
Acres from intel  
North American 1983 Datum, Lat/Long  
Grid

