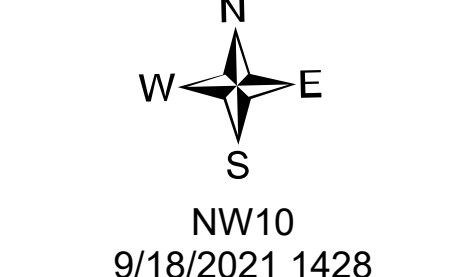


Repair Retardant South

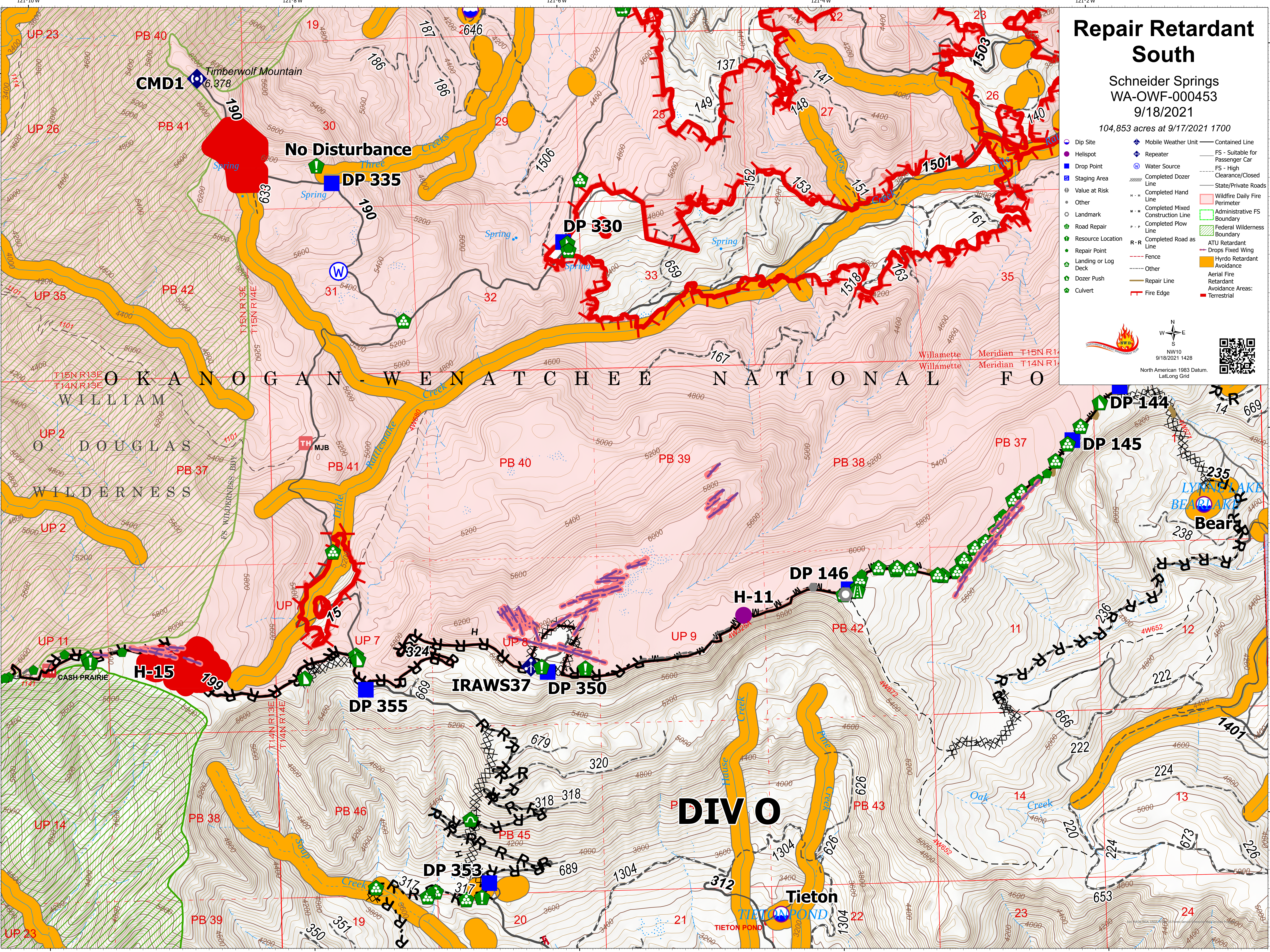
Schneider Springs
WA-OWF-000453
9/18/2021

104,853 acres at 9/17/2021 1700

- Dip Site
- Helispot
- Drop Point
- Staging Area
- Value at Risk
- Other
- Landmark
- Road Repair
- Resource Location
- Repair Point
- Landing or Log Deck
- Dozer Push
- Culvert
- Mobile Weather Unit
- Repeater
- Water Source
- Completed Dozer Line
- Completed Hand Line
- Completed Mixed Construction Line
- Completed Plow Line
- Completed Road as Line
- Fence
- Other
- Repair Line
- Fire Edge
- Contained Line
- FS - Suitable for Passenger Car
- FS - High Clearance/Closed
- State/Private Roads
- Wildfire Daily Fire Perimeter
- Administrative FS Boundary
- Federal Wilderness Boundary
- ATU Retardant
- Drops Fixed Wing
- Hydro Retardant Avoidance
- Aerial Fire Retardant Avoidance Areas:
- Terrestrial



North American 1983 Datum.
LatLong Grid



121°10'W 121°8'W 121°6'W 121°4'W 121°2'W

121°10'W 121°8'W 121°6'W 121°4'W 121°2'W

46°46'N 46°44'N 46°42'N

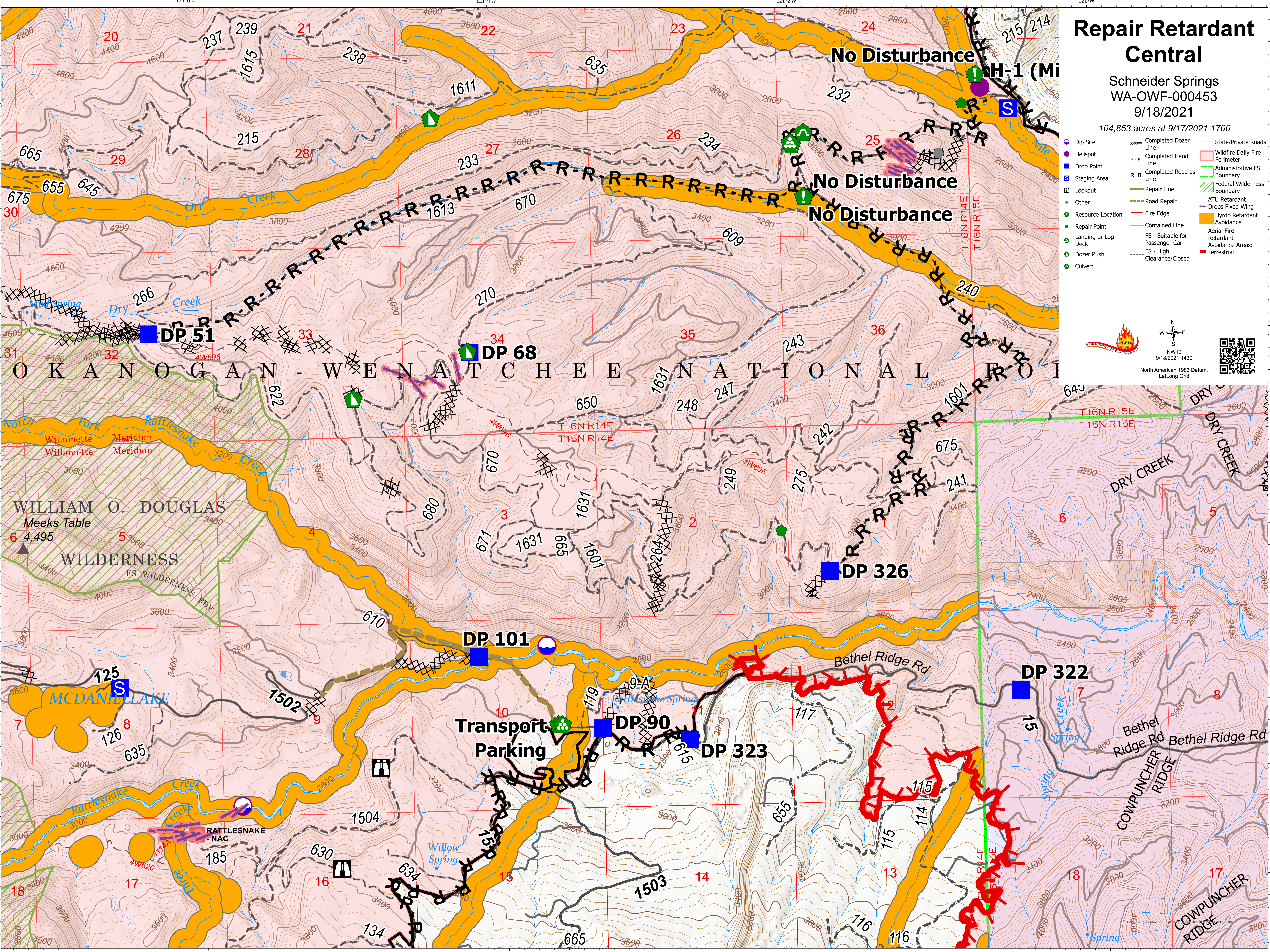
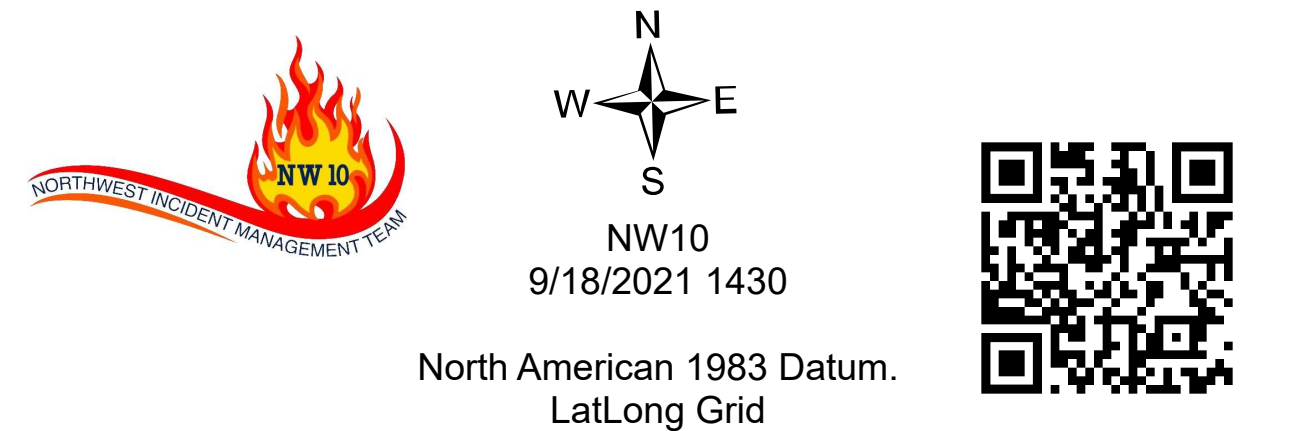
46°46'N 46°44'N 46°42'N

Repair Retardant Central

Schneider Springs
WA-OWF-000453
9/18/2021

104,853 acres at 9/17/2021 1700

- Dip Site
- Helispot
- Drop Point
- Staging Area
- Lookout
- Other
- Resource Location
- Repair Point
- Landing or Log Deck
- Dozer Push
- Culvert
- Completed Dozer Line
- Completed Hand Line
- Completed Road as Line
- Repair Line
- Road Repair
- Fire Edge
- Contained Line
- FS - Suitable for Passenger Car Clearance/Closed
- State/Private Roads
- Wildfire Daily Fire Perimeter
- Administrative FS Boundary
- Federal Wilderness Boundary
- ATU Retardant
- Drops Fixed Wing
- Hydro Retardant Avoidance
- Aerial Fire Retardant Avoidance Areas:
 - FS - High
 - Terrestrial

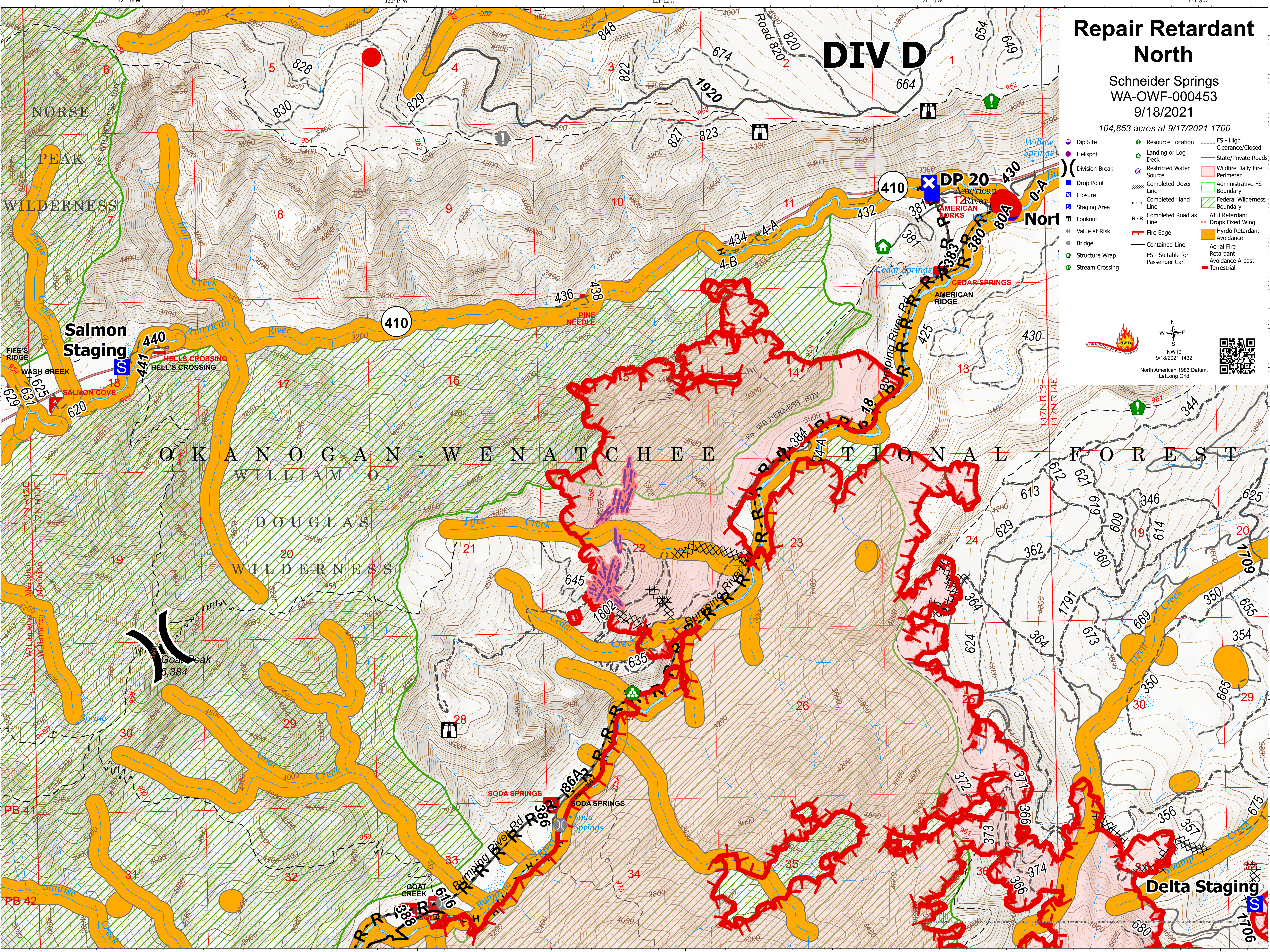


Repair Retardant North

Schneider Springs
WA-OWF-000453
9/18/2021

104,853 acres at 9/17/2021 1700

- Dip Site
- Helipoint
- Drop Point
- Staging Area
- Lookout
- Value at Risk
- Bridge
- Structure Wrap
- Stream Crossing
- Resource Location
- Landing or Log Deck
- Restricted Water Source
- Completed Dozer Line
- Completed Hand Line
- Completed Road as Line
- Fire Edge
- Contained Line
- FS - Suitable for Passenger Car
- FS - High Clearance/Closed
- State/Private Roads
- Wildfire Daily Fire Perimeter
- Administrative FS Boundary
- Federal Wilderness Boundary
- ATU Retardant
- Drops Fixed Wing
- Hydro Retardant Avoidance
- Aerial Fire Retardant Avoidance Areas: Terrestrial

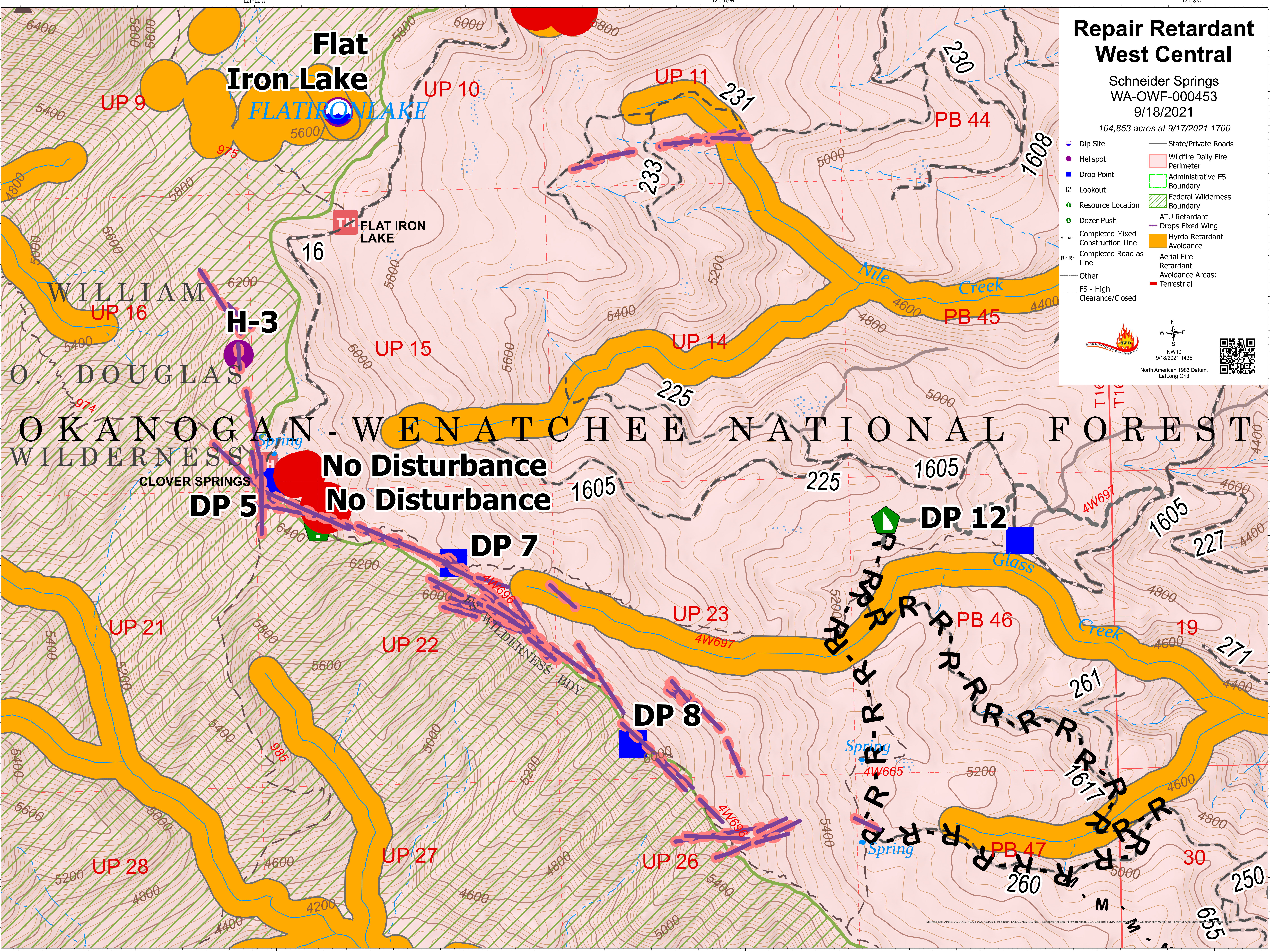


Repair Retardant West Central

Schneider Springs
WA-OWF-000453
9/18/2021

104,853 acres at 9/17/2021 1700

- Dip Site
- Helispot
- Drop Point
- Lookout
- Resource Location
- Dozer Push
- Completed Mixed Construction Line
- Completed Road as Line
- Other
- FS - High Clearance/Closed
- State/Private Roads
- Wildfire Daily Fire Perimeter
- Administrative FS Boundary
- Federal Wilderness Boundary
- ATU Retardant
- Drops Fixed Wing
- Hydro Retardant Avoidance
- Aerial Fire Retardant Avoidance Areas:
 - Terrestrial



No Disturbance
No Disturbance

DP 5

DP 7

DP 8

DP 12

H-3

UP 9

UP 10

UP 11

UP 16

UP 15

UP 14

UP 21

UP 22

UP 23

UP 28

UP 27

UP 26

PB 46

PB 47

PB 44

PB 45

19

30

Flat Iron Lake
FLATIRON LAKE
WILLIAM O. DOUGLAS WILDERNESS
OKANOGAN - WENATCHEE NATIONAL FOREST
CLOVER SPRINGS
FLAT IRON LAKE
Glass Creek
Nile Creek
4W697
4W665
4W696
4W698
4W699
4W700
4W701
4W702
4W703
4W704
4W705
4W706
4W707
4W708
4W709
4W710
4W711
4W712
4W713
4W714
4W715
4W716
4W717
4W718
4W719
4W720
4W721
4W722
4W723
4W724
4W725
4W726
4W727
4W728
4W729
4W730
4W731
4W732
4W733
4W734
4W735
4W736
4W737
4W738
4W739
4W740
4W741
4W742
4W743
4W744
4W745
4W746
4W747
4W748
4W749
4W750
4W751
4W752
4W753
4W754
4W755
4W756
4W757
4W758
4W759
4W760
4W761
4W762
4W763
4W764
4W765
4W766
4W767
4W768
4W769
4W770
4W771
4W772
4W773
4W774
4W775
4W776
4W777
4W778
4W779
4W780
4W781
4W782
4W783
4W784
4W785
4W786
4W787
4W788
4W789
4W790
4W791
4W792
4W793
4W794
4W795
4W796
4W797
4W798
4W799
4W800