

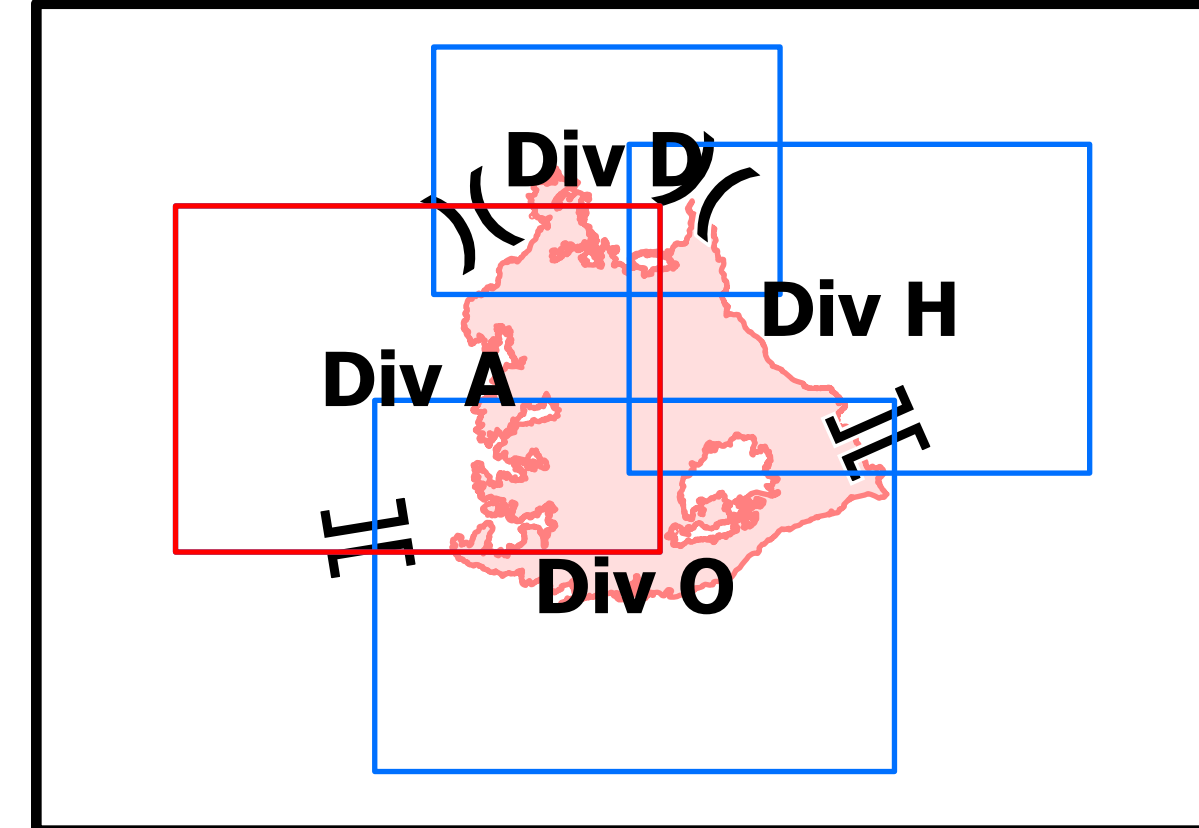
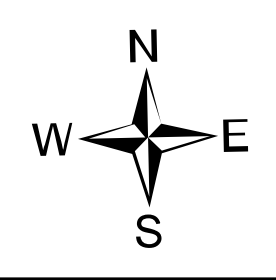
# Div A

## Ops Map

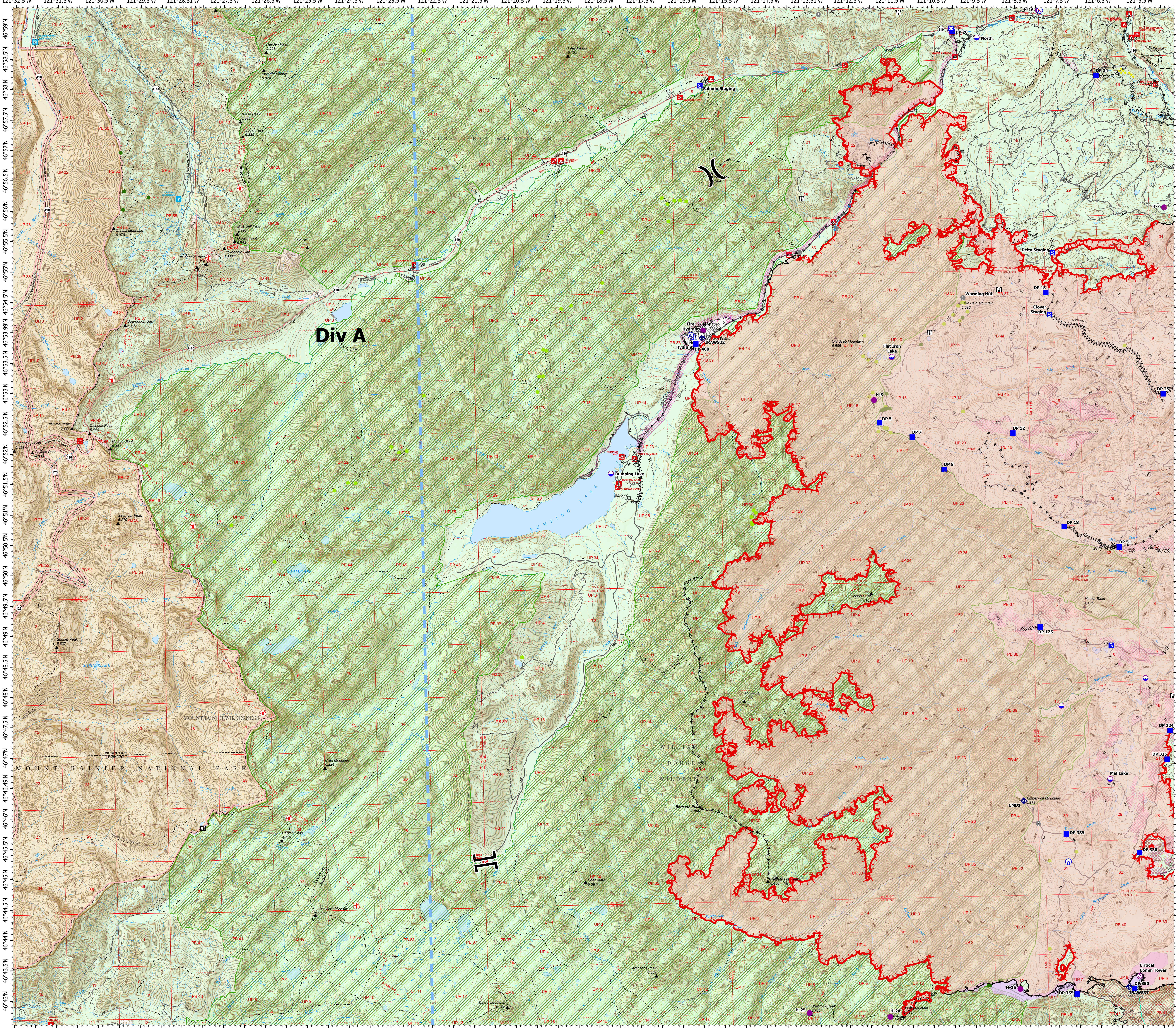
Schneider Springs  
WA-OWF-000453  
Division Map Book  
9/18/2021  
104,853 acres at 9/17/2021 1700



- Aerial Hazard
- Dip Site
- Helispot
- Division Break
- Branch Break
- Drop Point
- Closure
- Staging Area
- Lookout
- Hot Spot - Spot Fire
- Value at Risk
- Bridge
- Mobile Weather Unit
- Repeater
- Water Source
- Restricted Water Source
- Completed Dozer Line
- Completed Fuel Break
- Completed Hand Line
- Completed Mixed Construction Line
- Planned Dozer Line
- Planned Hand Line
- Planned Mixed Construction Line
- Planned Road as Line
- Access or Improved Road
- Temporary Flight Restriction
- Fire Edge
- Contained Line
- Natural Fuel Break
- Other
- Wildfire Daily Fire Perimeter
- Structures
- Seed Trees
- Whitebark Pine Trees
- Campground
- Group Campground
- Picnic Site
- Boating Site
- Interpretive Site
- Ski Area Alpine
- Snowpark
- NPS Headquarters Office; Administrative Office; Patrol Cabin; Ranger Station
- Picnic Site
- Above Ground Power Lines
- State or PVT
- FS - Suitable for Passenger Car
- FS - High Clearance/Closed
- African Wiregrass
- Whitebark Pine Polygons
- Resource Concern
- Fire Fuels Treatments
- Mechanical Fuels Treatments
- DNR Fuel Treatments
- Federal Wilderness Boundary
- Approved or Proclaimed NPS Boundary
- Federal Wilderness Boundary
- Forest Service Land
- National Park Service Lands
- Other Federal Lands



9/17/2021 2120  
Acres from intel  
North American 1983 Datum. LatLong  
Grid



121°33'W 121°32'W 121°31'W 121°30'W 121°29'W 121°28'W 121°27'W 121°26'W 121°25'W 121°24'W 121°23'W 121°22'W 121°21'W 121°20'W 121°19'W 121°18'W 121°17'W 121°16'W 121°15'W 121°14'W 121°13'W 121°12'W 121°11'W 121°10'W 121°9'W 121°8'W 121°7'W 121°6'W 121°5'W

46°43'N 46°42'N 46°41'N 46°40'N 46°39'N 46°38'N 46°37'N 46°36'N 46°35'N 46°34'N 46°33'N 46°32'N 46°31'N 46°30'N 46°29'N 46°28'N 46°27'N 46°26'N 46°25'N 46°24'N 46°23'N 46°22'N 46°21'N 46°20'N 46°19'N 46°18'N 46°17'N 46°16'N 46°15'N 46°14'N 46°13'N 46°12'N 46°11'N 46°10'N 46°9'N 46°8'N 46°7'N 46°6'N 46°5'N 46°4'N 46°3'N 46°2'N 46°1'N