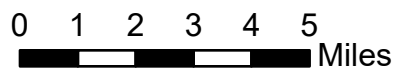


Pilot Map

Schneider Springs
WA-OWF-000453
9/18/2021

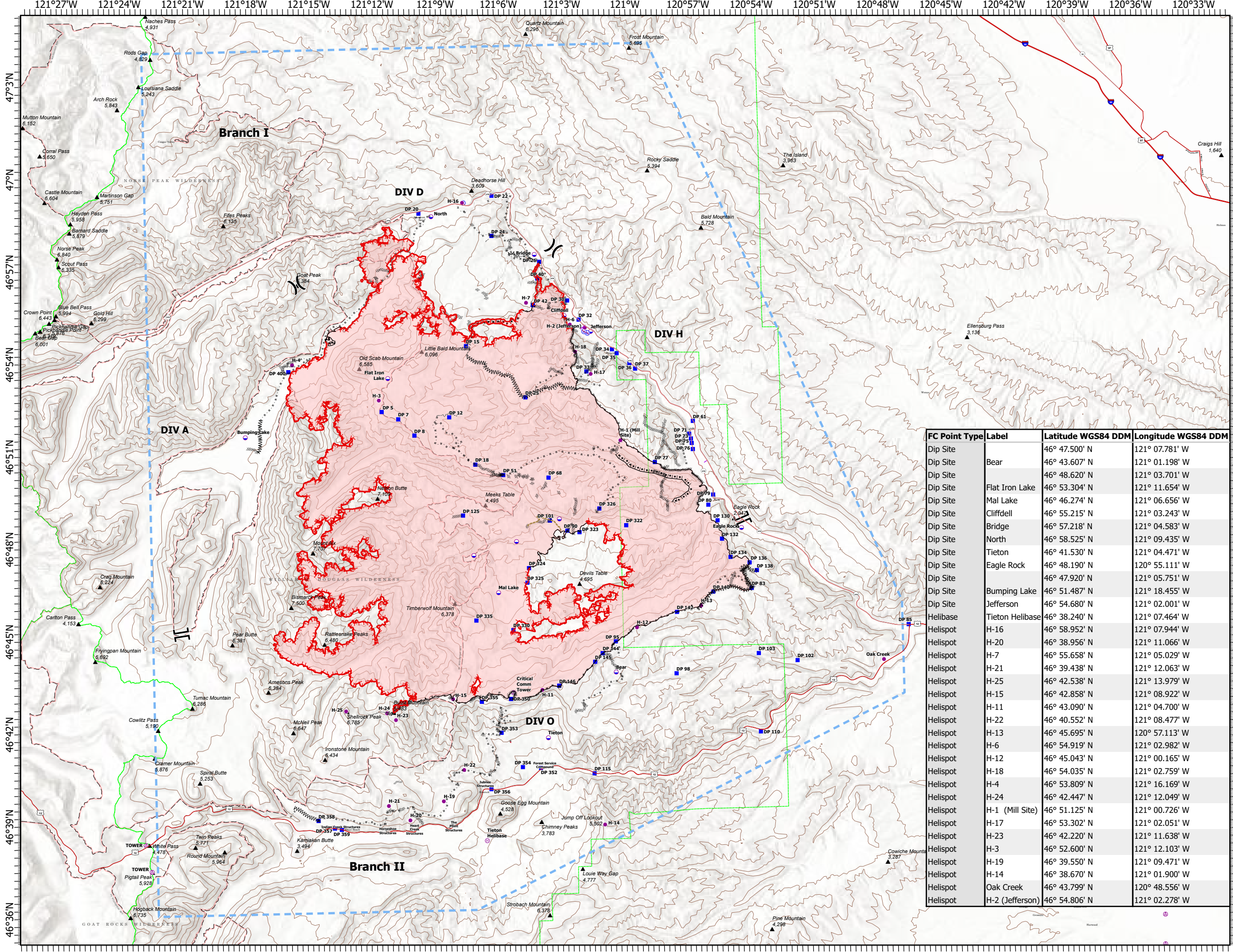
104,853 acres at 9/17/2021 1700



- Aerial Hazard
- Dip Site
- Helispot
- Helibase
- Division Break
- Branch Break
- Drop Point
- Restricted Water Source
- Wildfire Daily Fire Perimeter
- Label Point
- Completed Burnout
- Completed Dozer Line
- Completed Fuel Break
- Completed Hand Line
- Completed Mixed Construction Line
- Completed Plow Line
- Completed Road as Line
- Access or Improved Road
- Fence
- Other
- Road Repair
- Aerial Hazard
- Temporary Flight Restriction
- Fire Edge
- Contained Line
- DNR Contour_500_SE



NW10
9/17/2021 2118
Acres from intel
North American 1983 Datum.
LatLong Grid



FC Point Type	Label	Latitude WGS84 DDM	Longitude WGS84 DDM
Dip Site		46° 47.500' N	121° 07.781' W
Dip Site	Bear	46° 43.607' N	121° 01.198' W
Dip Site		46° 48.620' N	121° 03.701' W
Dip Site	Flat Iron Lake	46° 53.304' N	121° 11.654' W
Dip Site	Mal Lake	46° 46.274' N	121° 06.656' W
Dip Site	Cliffdell	46° 55.215' N	121° 03.243' W
Dip Site	Bridge	46° 57.218' N	121° 04.583' W
Dip Site	North	46° 58.525' N	121° 09.435' W
Dip Site	Tieton	46° 41.530' N	121° 04.471' W
Dip Site	Eagle Rock	46° 48.190' N	120° 55.111' W
Dip Site		46° 47.920' N	121° 05.751' W
Dip Site	Bumping Lake	46° 51.487' N	121° 18.455' W
Dip Site	Jefferson	46° 54.680' N	121° 02.001' W
Helibase	Tieton Helibase	46° 38.240' N	121° 07.464' W
Helispot	H-16	46° 58.952' N	121° 07.944' W
Helispot	H-20	46° 38.956' N	121° 11.066' W
Helispot	H-7	46° 55.658' N	121° 05.029' W
Helispot	H-21	46° 39.438' N	121° 12.063' W
Helispot	H-25	46° 42.538' N	121° 13.979' W
Helispot	H-15	46° 42.858' N	121° 08.922' W
Helispot	H-11	46° 43.090' N	121° 04.700' W
Helispot	H-22	46° 40.552' N	121° 08.477' W
Helispot	H-13	46° 45.695' N	120° 57.113' W
Helispot	H-6	46° 54.919' N	121° 02.982' W
Helispot	H-12	46° 45.043' N	121° 00.165' W
Helispot	H-18	46° 54.035' N	121° 02.759' W
Helispot	H-4	46° 53.809' N	121° 16.169' W
Helispot	H-24	46° 42.447' N	121° 12.049' W
Helispot	H-1 (Mill Site)	46° 51.125' N	121° 00.726' W
Helispot	H-17	46° 53.302' N	121° 02.051' W
Helispot	H-23	46° 42.220' N	121° 11.638' W
Helispot	H-3	46° 52.600' N	121° 12.103' W
Helispot	H-19	46° 39.550' N	121° 09.471' W
Helispot	H-14	46° 38.670' N	121° 01.900' W
Helispot	Oak Creek	46° 43.799' N	120° 48.556' W
Helispot	H-2 (Jefferson)	46° 54.806' N	121° 02.278' W