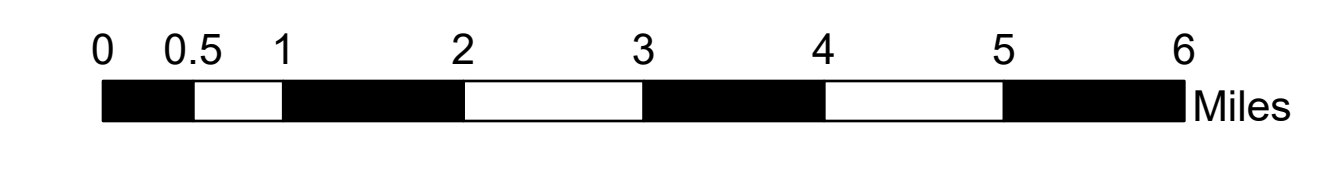


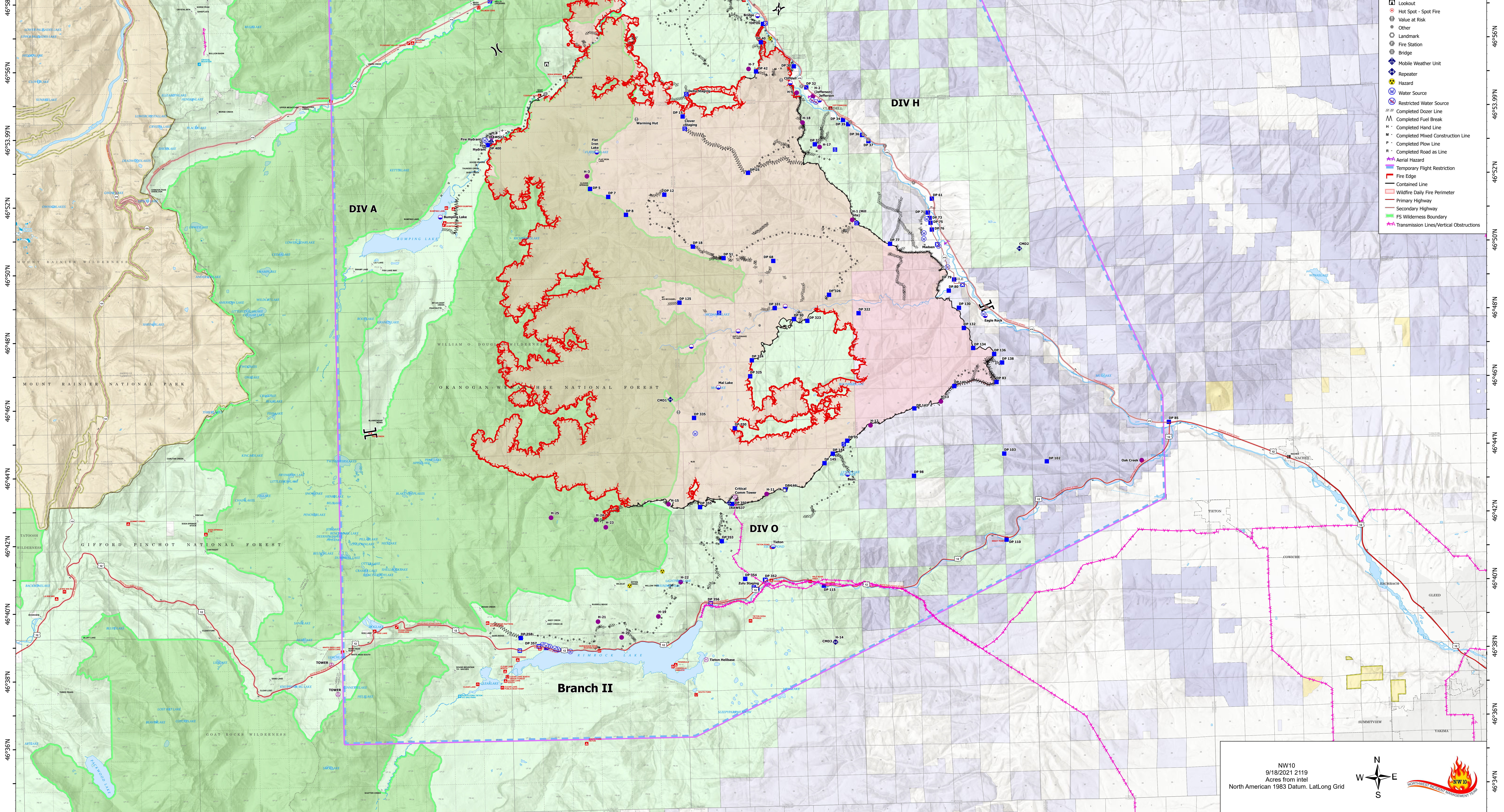
Air Ops Map

Schneider Springs
WA-OWF-000453
9/19/2021

104,853 acres at 9/17/2021 1700



FC Point Type/Label	Latitude WGS84 DDM	Longitude WGS84 DDM
Helispot H-16	46° 58.951' N	121° 07.944' W
Helispot H-20	46° 38.956' N	121° 11.066' W
Helispot H-7	46° 55.658' N	121° 05.029' W
Helispot H-21	46° 39.438' N	121° 12.063' W
Helispot H-25	46° 42.538' N	121° 13.979' W
Helispot H-15	46° 42.858' N	121° 08.922' W
Helispot H-11	46° 43.090' N	121° 04.700' W
Helispot H-22	46° 40.552' N	121° 08.477' W
Helispot H-13	46° 45.695' N	120° 57.113' W
Helispot H-6	46° 54.919' N	121° 02.982' W
Helispot H-12	46° 45.043' N	121° 00.165' W
Helispot H-18	46° 54.035' N	121° 02.759' W
Helispot H-4	46° 53.809' N	121° 16.169' W
Helispot H-24	46° 42.447' N	121° 12.049' W
Helispot H-1 (Mill Site)	46° 51.125' N	121° 00.726' W
Helispot H-17	46° 53.302' N	121° 02.051' W
Helispot H-23	46° 42.220' N	121° 11.638' W
Helispot H-3	46° 52.600' N	121° 12.103' W
Helispot H-19	46° 39.549' N	121° 09.471' W
Helispot H-14	46° 38.670' N	121° 01.900' W
Helispot Oak Creek	46° 43.799' N	120° 48.556' W
Helispot H-2 (Jefferson)	46° 54.806' N	121° 02.278' W
Helibase Tieton Helibase	46° 38.239' N	121° 07.464' W
Dip Site Bear	46° 47.500' N	121° 07.781' W
Dip Site Bear	46° 43.607' N	121° 01.198' W
Dip Site	46° 48.620' N	121° 03.701' W
Dip Site Flat Iron Lake	46° 53.304' N	121° 11.654' W
Dip Site Mat Lake	46° 46.274' N	121° 06.556' W
Dip Site Cliffdell	46° 55.214' N	121° 03.243' W
Dip Site Bridge	46° 57.218' N	121° 04.583' W
Dip Site North	46° 58.525' N	121° 09.435' W
Dip Site Tieton	46° 41.530' N	121° 04.471' W
Dip Site Eagle Rock	46° 48.190' N	120° 55.111' W
Dip Site H-2 (Jefferson)	46° 47.920' N	121° 05.751' W
Dip Site Bumping Lake	46° 51.487' N	121° 18.455' W
Dip Site Jefferson	46° 54.680' N	121° 02.001' W
Aerial Hazard TOWER	46° 38.323' N	121° 23.533' W
Aerial Hazard Critical Comm Tower	46° 43.021' N	121° 06.060' W
Aerial Hazard TOWER	46° 37.451' N	121° 23.279' W



- Aerial Hazard
- Dip Site
- Helispot
- Helibase
- Division Break
- Branch Break
- Drop Point
- Closure
- Staging Area
- Lookout
- Hot Spot - Spot Fire
- Value at Risk
- Other
- Landmark
- Fire Station
- Bridge
- Mobile Weather Unit
- Repeater
- Hazard
- Water Source
- Restricted Water Source
- Completed Dozer Line
- Completed Fuel Break
- Completed Hand Line
- Completed Mixed Construction Line
- Completed Plow Line
- Completed Road as Line
- Aerial Hazard
- Temporary Flight Restriction
- Fire Edge
- Contained Line
- Wildfire Daily Fire Perimeter
- Primary Highway
- Secondary Highway
- FS Wilderness Boundary
- Transmission Lines/Vertical Obstructions

NW10
9/18/2021 2119
Acres from Intel
North American 1983 Datum, LatLong Grid