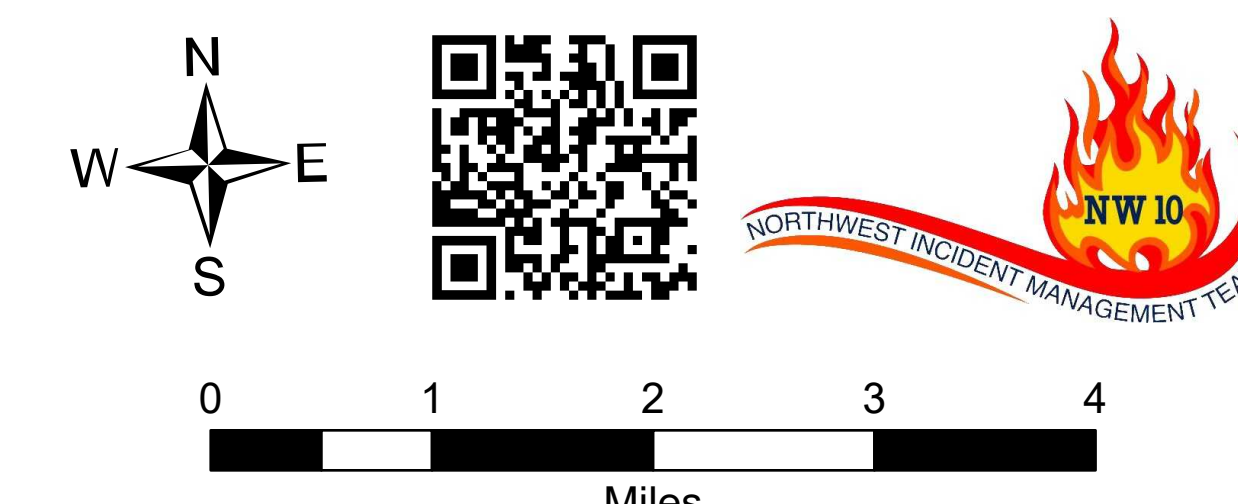


Briefing Map

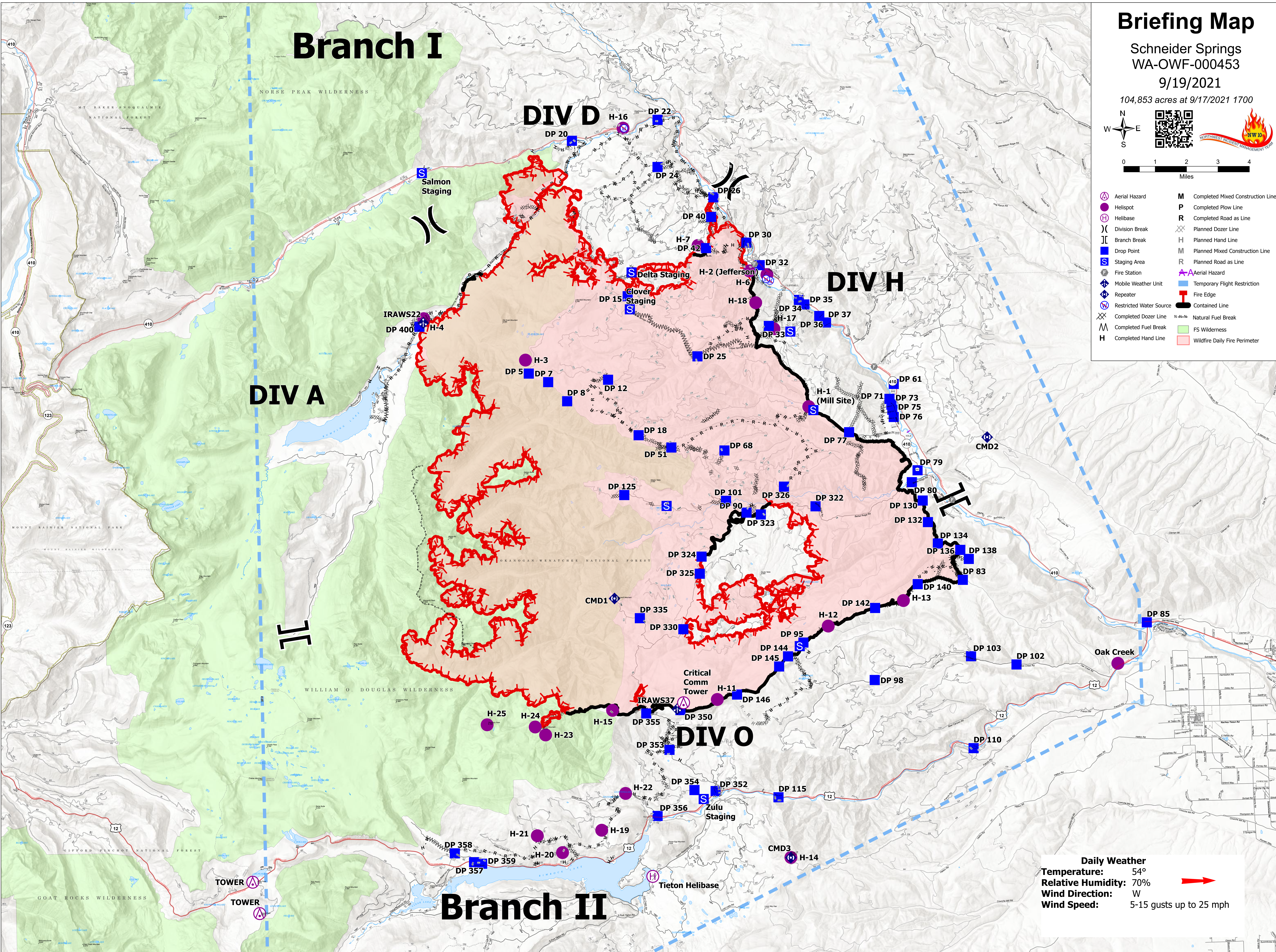
Schneider Springs
WA-OWF-000453

9/19/2021

104,853 acres at 9/17/2021 1700



- | | | | |
|--|-------------------------|--|-------------------------------------|
| | Aerial Hazard | | M Completed Mixed Construction Line |
| | Helispot | | P Completed Plow Line |
| | Helibase | | R Completed Road as Line |
| | Division Break | | X Planned Dozer Line |
| | Branch Break | | H Planned Hand Line |
| | Drop Point | | M Planned Mixed Construction Line |
| | Staging Area | | R Planned Road as Line |
| | Fire Station | | A Aerial Hazard |
| | Mobile Weather Unit | | TFR Temporary Flight Restriction |
| | Repeater | | FE Fire Edge |
| | Restricted Water Source | | CL Contained Line |
| | Completed Dozer Line | | NFB Natural Fuel Break |
| | Completed Fuel Break | | FS Wilderness |
| | Completed Hand Line | | WDFP Wildfire Daily Fire Perimeter |



Daily Weather
Temperature: 54°
Relative Humidity: 70%
Wind Direction: W
Wind Speed: 5-15 gusts up to 25 mph