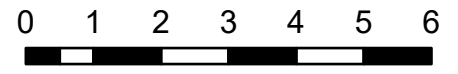


IAP Map Index

Schneider Springs
WA-OWF-000453

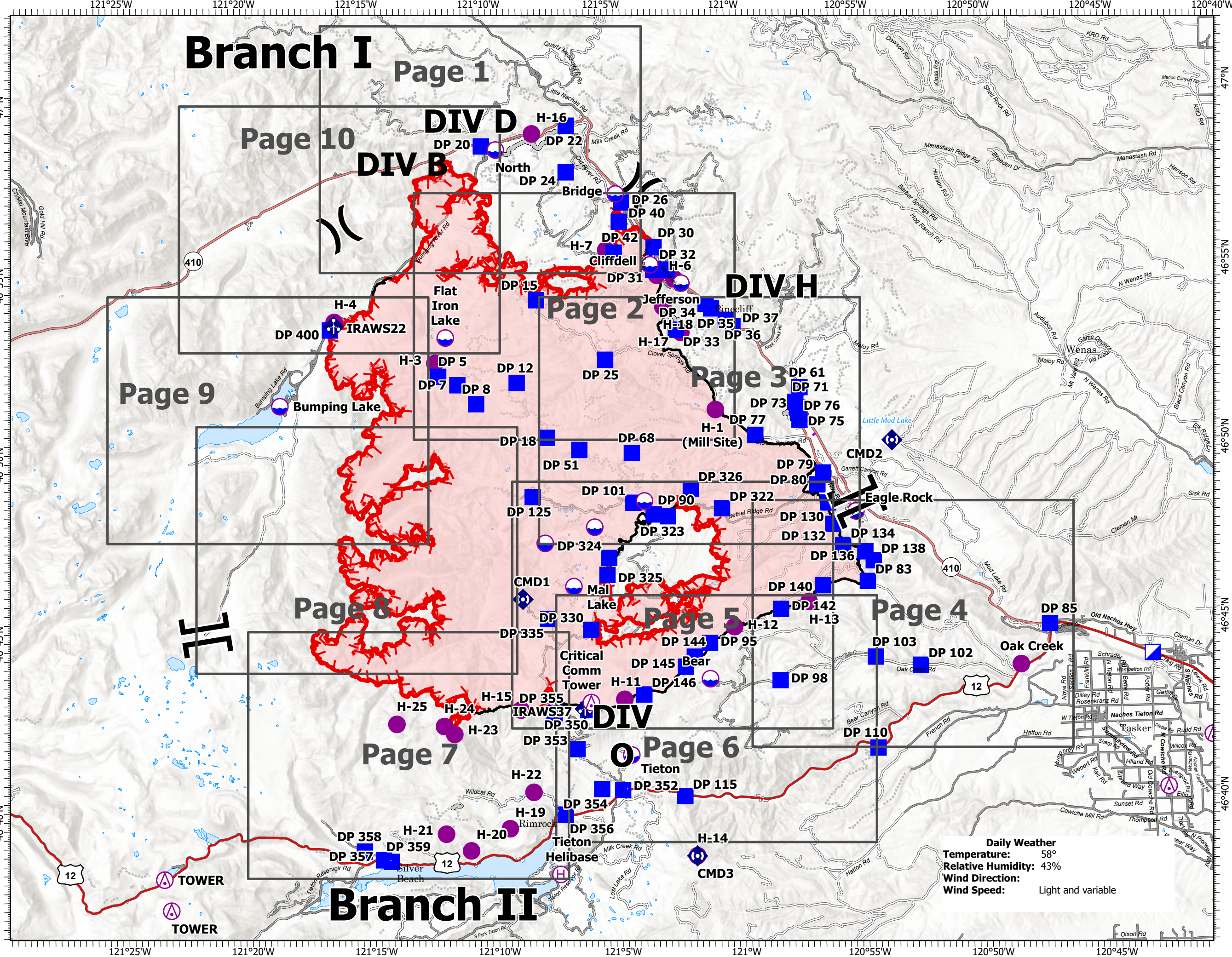
9/20/2021

104,853 acres at 9/17/2021 1700



Miles

- Aerial Hazard
- Dip Site
- Helispot
- Helibase
- Division Break
- Branch Break
- Incident Command Post
- Drop Point
- Mobile Weather Unit
- Repeater
- Access or Improved Road
- Aerial Hazard
- Fire Edge
- Contained Line
- Wildfire Daily Fire Perimeter
- Grid Index



Daily Weather
Temperature: 58°
Relative Humidity: 43%
Wind Direction:
Wind Speed: Light and variable



NW 10
9/19/2021 2114
Acres from intel
North American 1983 Datum.
Lat/Long Grid



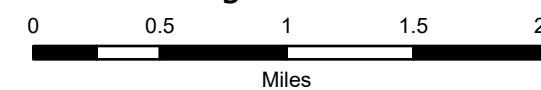
IAP Map

Schneider Springs
WA-OWF-000453

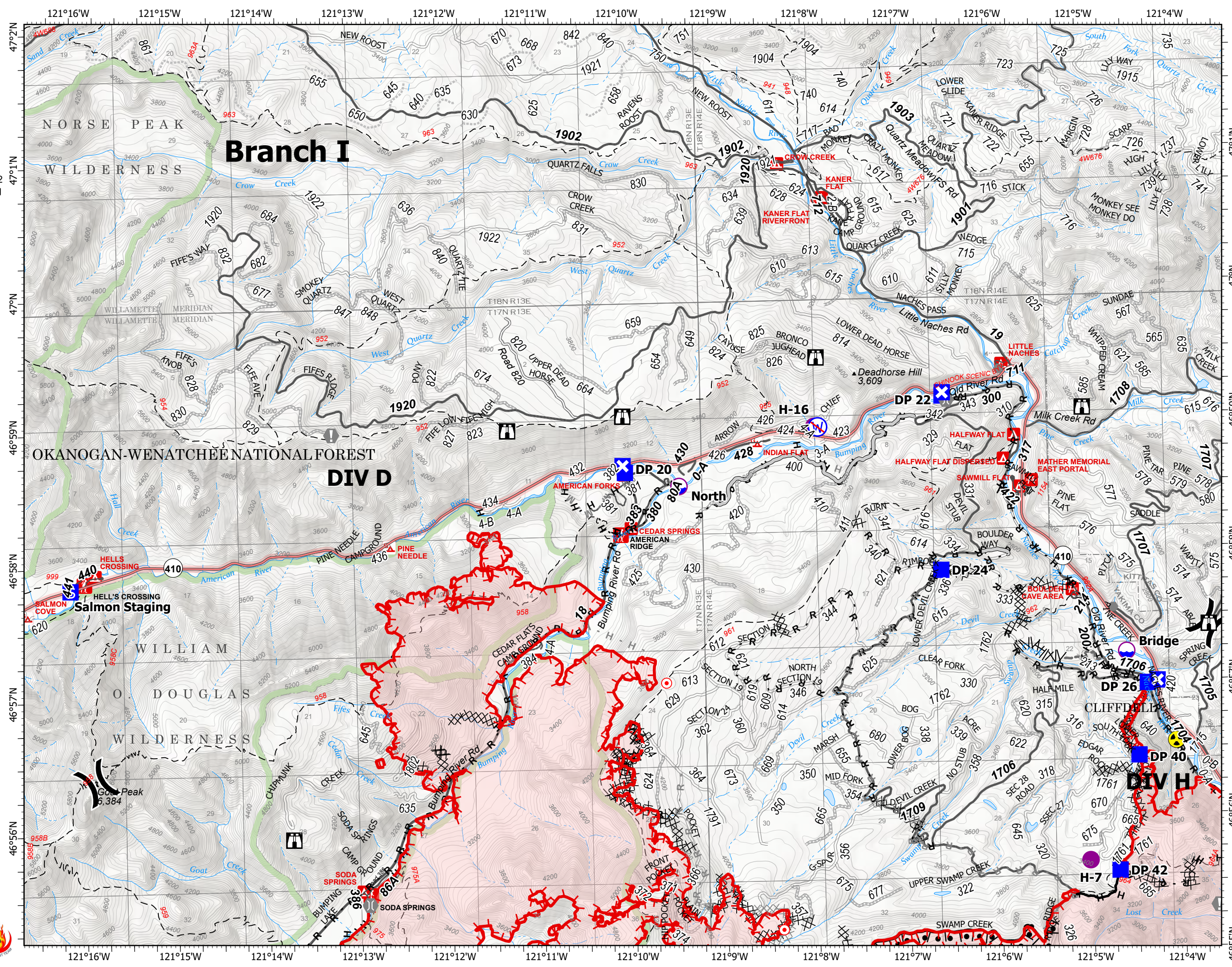
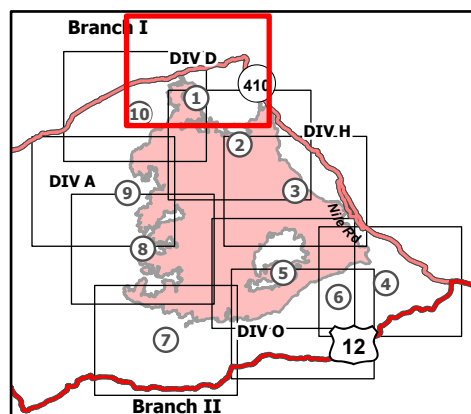
9/20/2021

104,853 acres at 9/17/2021 1700

Page 1 of 10



- Dip Site
- Helispot
- Division Break
- Drop Point
- Closure
- Staging Area
- Lookout
- Hot Spot - Spot Fire
- Value at Risk
- Other
- Bridge
- Hazard
- Restricted Water Source
- Completed Burnout
- Completed Dozer Line
- Completed Fuel Break
- Completed Hand Line
- Completed Road as Line
- Planned Dozer Line
- Planned Hand Line
- Planned Mixed Construction Line
- Planned Road as Line
- Access or Improved Road
- Other
- Fire Edge
- Contained Line
- Administrative FS Boundary
- FS Wilderness Boundary
- Wildfire Daily Fire Perimeter



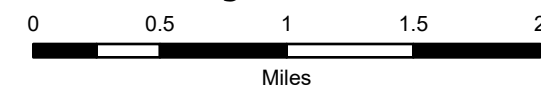
IAP Map

Schneider Springs
WA-OWF-000453

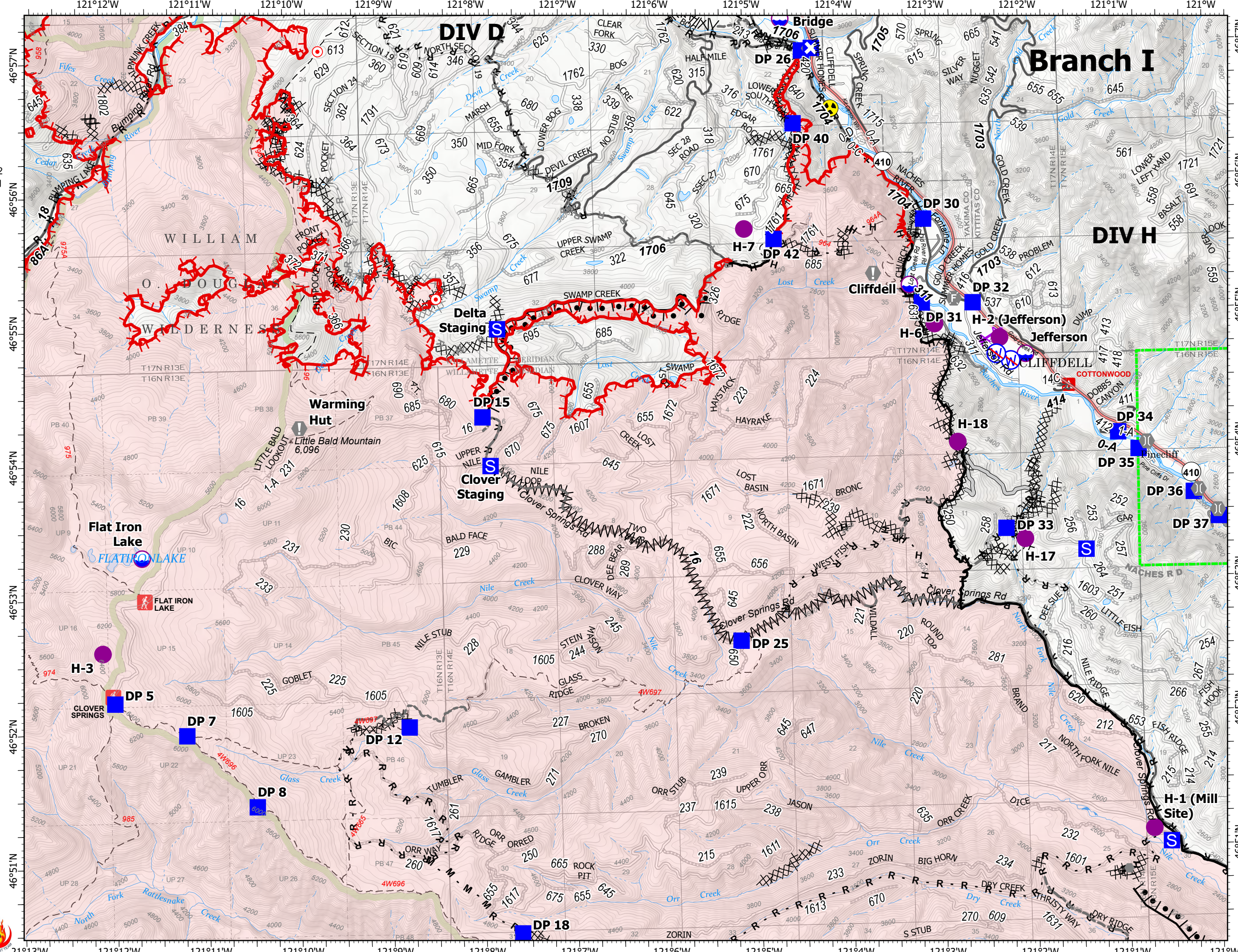
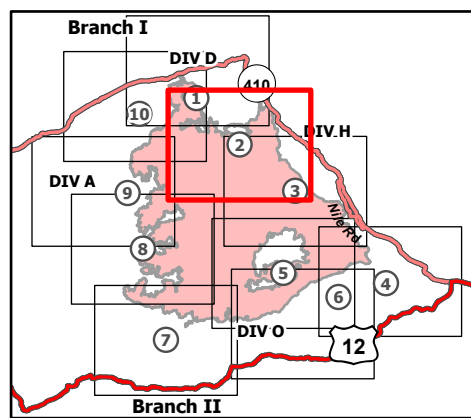
9/20/2021

104,853 acres at 9/17/2021 1700

Page 2 of 10



- Dip Site
- Helispot
- Division Break
- Drop Point
- Closure
- Staging Area
- Lookout
- Hot Spot - Spot Fire
- Value at Risk
- Other
- Fire Station
- Bridge
- Hazard
- Restricted Water Source
- Completed Burnout
- Completed Dozer Line
- Completed Fuel Break
- Completed Hand Line
- Completed Mixed Construction Line
- Completed Road as Line
- Planned Dozer Line
- Planned Hand Line
- Planned Road as Line
- Access or Improved Road
- Other
- Road Repair
- Aerial Hazard
- Fire Edge
- Contained Line
- Administrative FS Boundary
- FS Wilderness Boundary
- Wildfire Daily Fire Perimeter



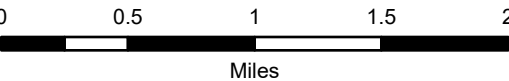
IAP Map

Schneider Springs
WA-OWF-000453

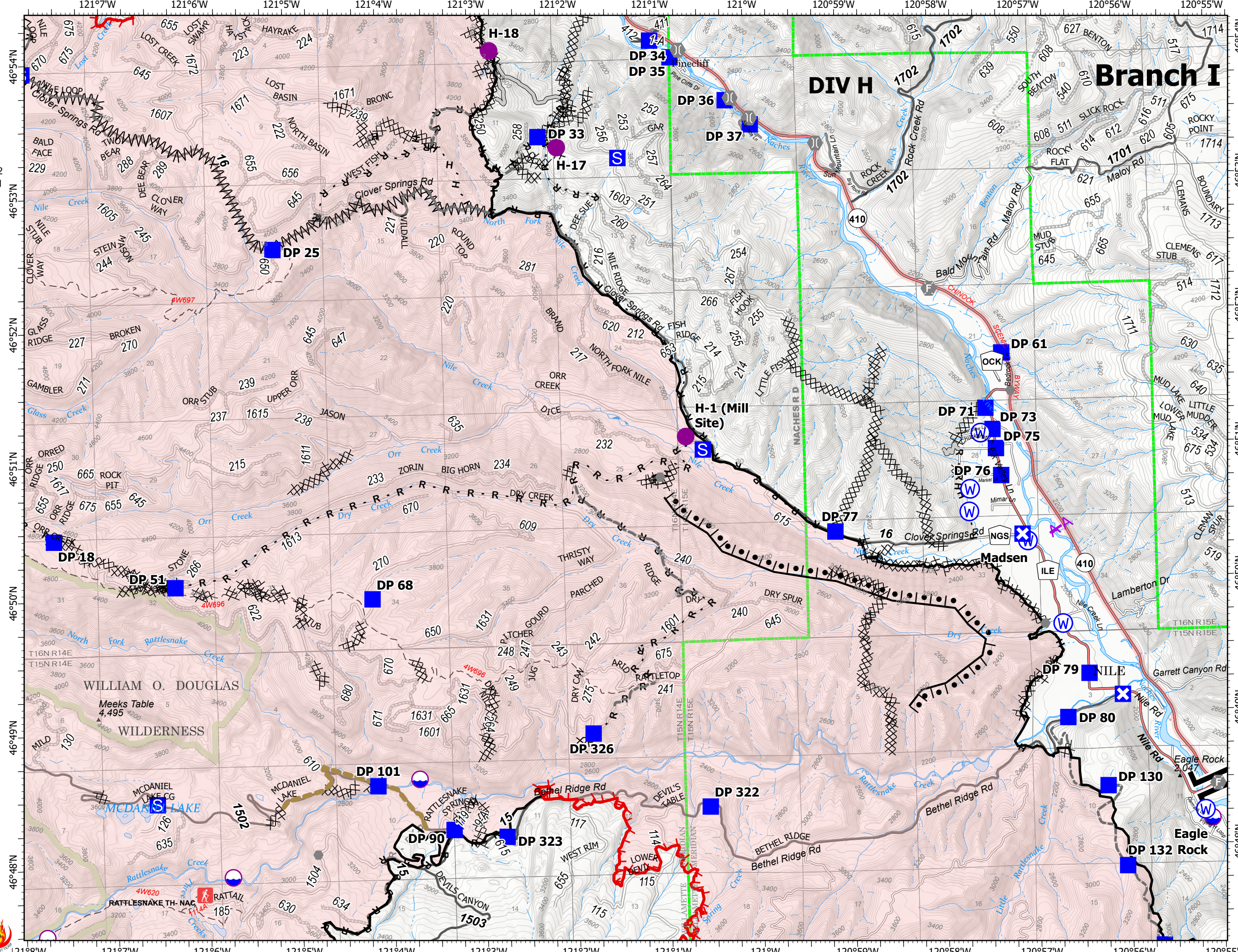
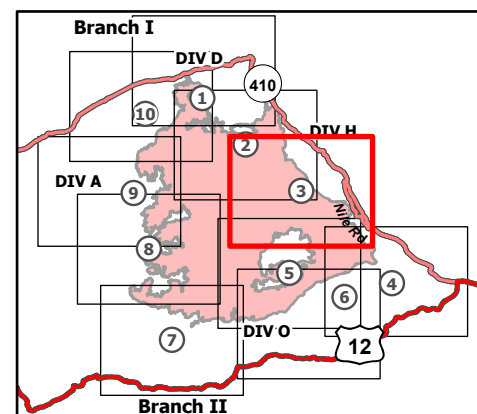
9/20/2021

104,853 acres at 9/17/2021 1700

Page 3 of 10



- Dip Site
- Helispot
- Branch Break
- Drop Point
- Closure
- Staging Area
- Other
- Fire Station
- Bridge
- Water Source
- Completed Burnout
- Completed Dozer Line
- Completed Fuel Break
- Completed Hand Line
- Completed Mixed Construction Line
- Completed Road as Line
- Planned Road as Line
- Access or Improved Road
- Other
- Road Repair
- Aerial Hazard
- Fire Edge
- Contained Line
- Administrative FS Boundary
- FS Wilderness Boundary
- Wildfire Daily Fire Perimeter



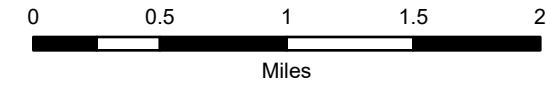
IAP Map

Schneider Springs
WA-OWF-000453

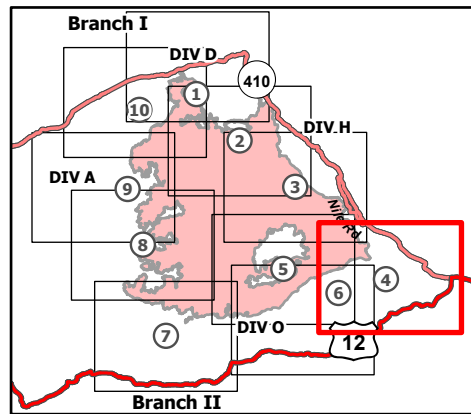
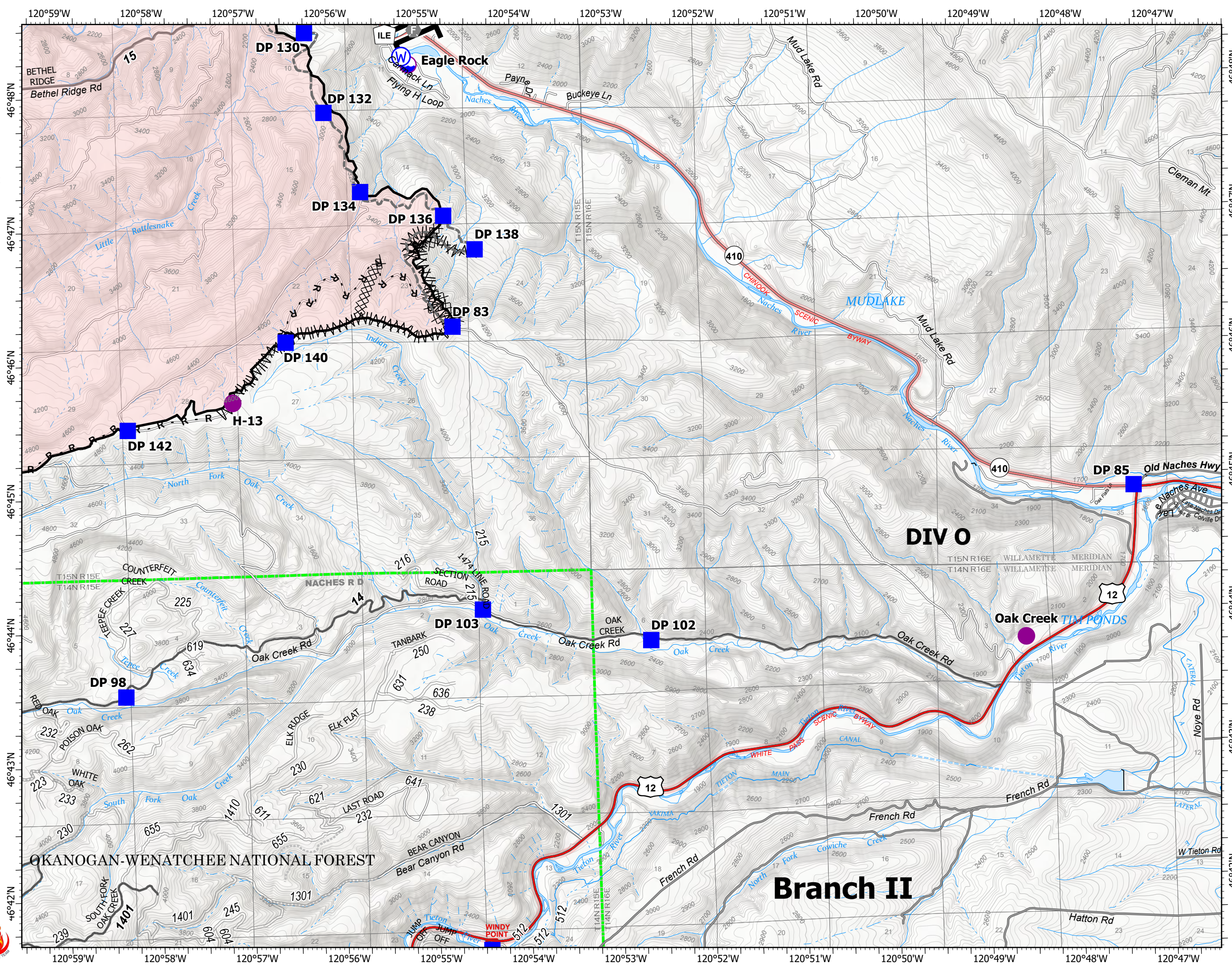
9/20/2021

104,853 acres at 9/17/2021 1700

Page 4 of 10



- Dip Site
- Helispot
- Branch Break
- Drop Point
- Fire Station
- Water Source
- Completed Dozer Line
- Completed Fuel Break
- Completed Road as Line
- Other
- Contained Line
- Administrative FS Boundary
- Wildfire Daily Fire Perimeter



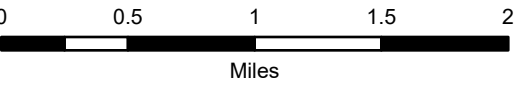
IAP Map

Schneider Springs
WA-OWF-000453

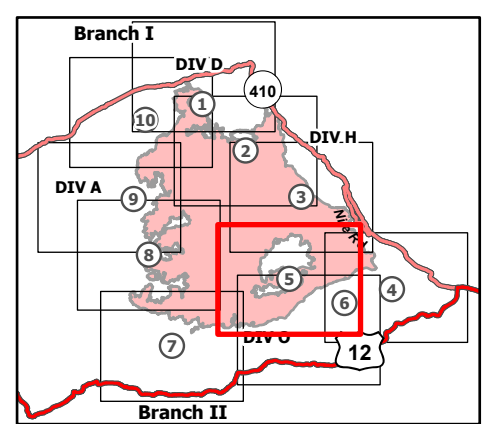
9/20/2021

104,853 acres at 9/17/2021 1700

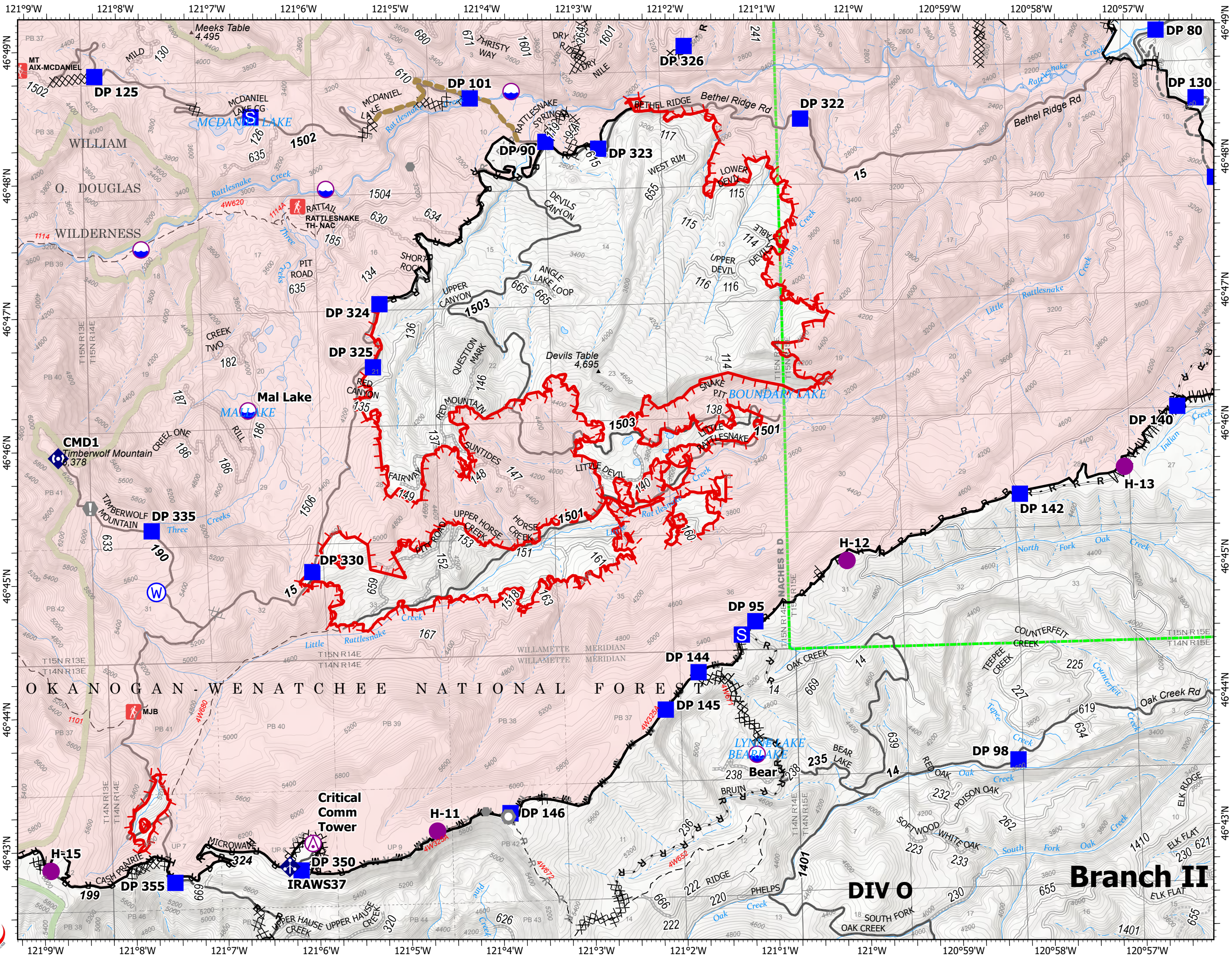
Page 5 of 10



- Aerial Hazard
- Dip Site
- Helispot
- Drop Point
- Closure
- Staging Area
- Value at Risk
- Other
- Landmark
- Mobile Weather Unit
- Repeater
- Water Source
- Completed Burnout
- Completed Dozer Line
- Completed Fuel Break
- Completed Hand Line
- Completed Mixed Construction Line
- Completed Plow Line
- Completed Road as Line
- Planned Dozer Line
- Planned Road as Line
- Other
- Road Repair
- Fire Edge
- Contained Line
- Administrative FS Boundary
- FS Wilderness Boundary
- Wildfire Daily Fire Perimeter



9/19/2021 2105
Acres from intel
North American 1983 Datum.
Lat/Long Grid



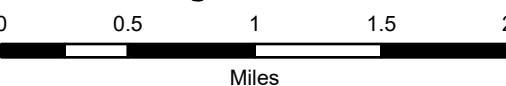
IAP Map

Schneider Springs
WA-OWF-000453

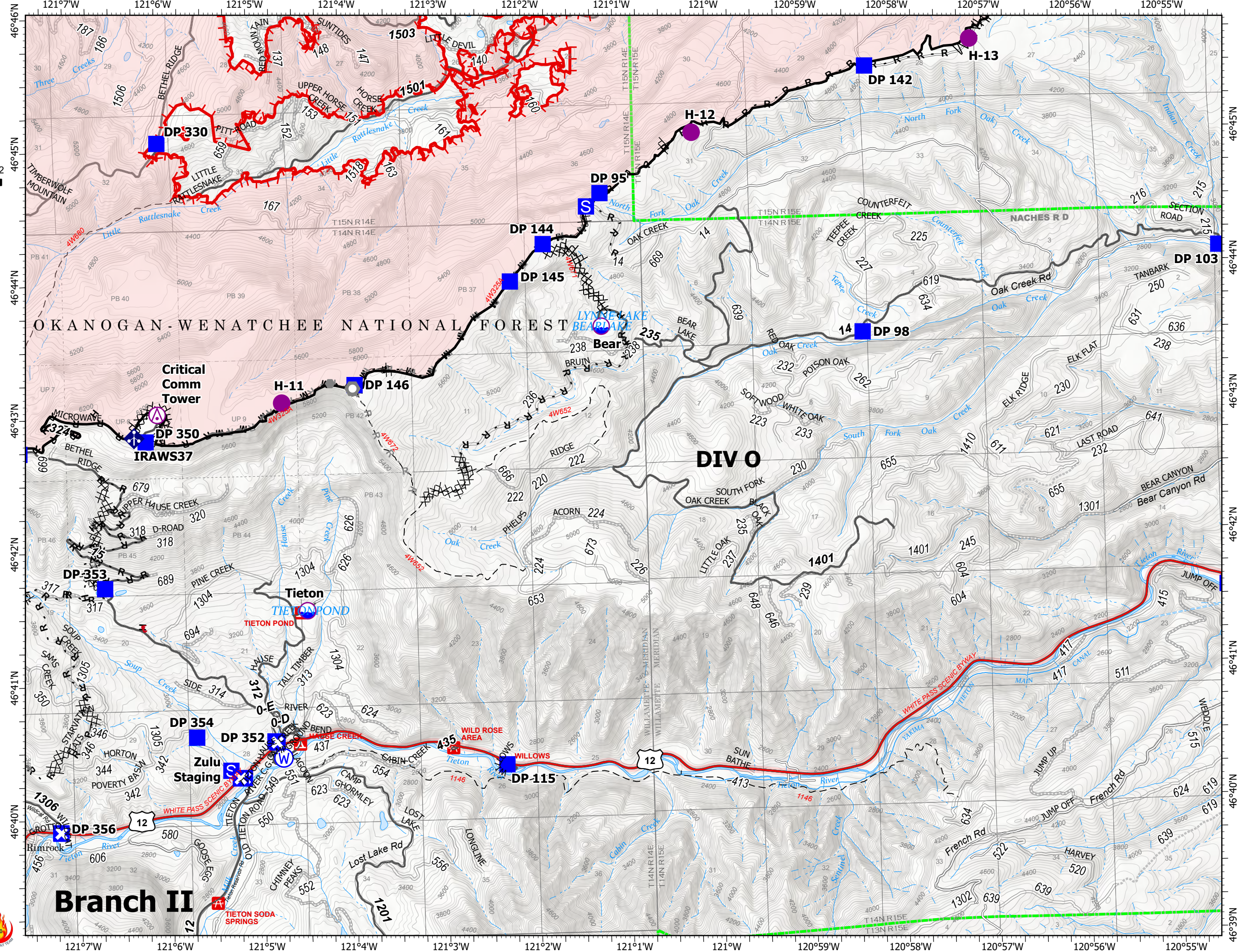
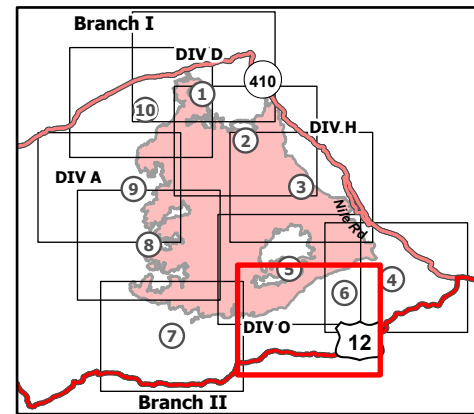
9/20/2021

104,853 acres at 9/17/2021 1700

Page 6 of 10



- Aerial Hazard
- Dip Site
- Helispot
- Drop Point
- Closure
- Staging Area
- Other
- Landmark
- Mobile Weather Unit
- Water Source
- Completed Dozer Line
- Completed Fuel Break
- Completed Hand Line
- Completed Mixed Construction Line
- Completed Plow Line
- Completed Road as Line
- Planned Dozer Line
- Planned Hand Line
- Planned Road as Line
- Fence
- Other
- Fire Edge
- Contained Line
- Administrative FS Boundary
- Wildfire Daily Fire Perimeter



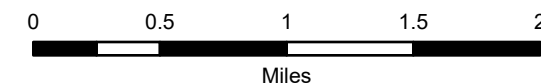
IAP Map

Schneider Springs
WA-OWF-000453

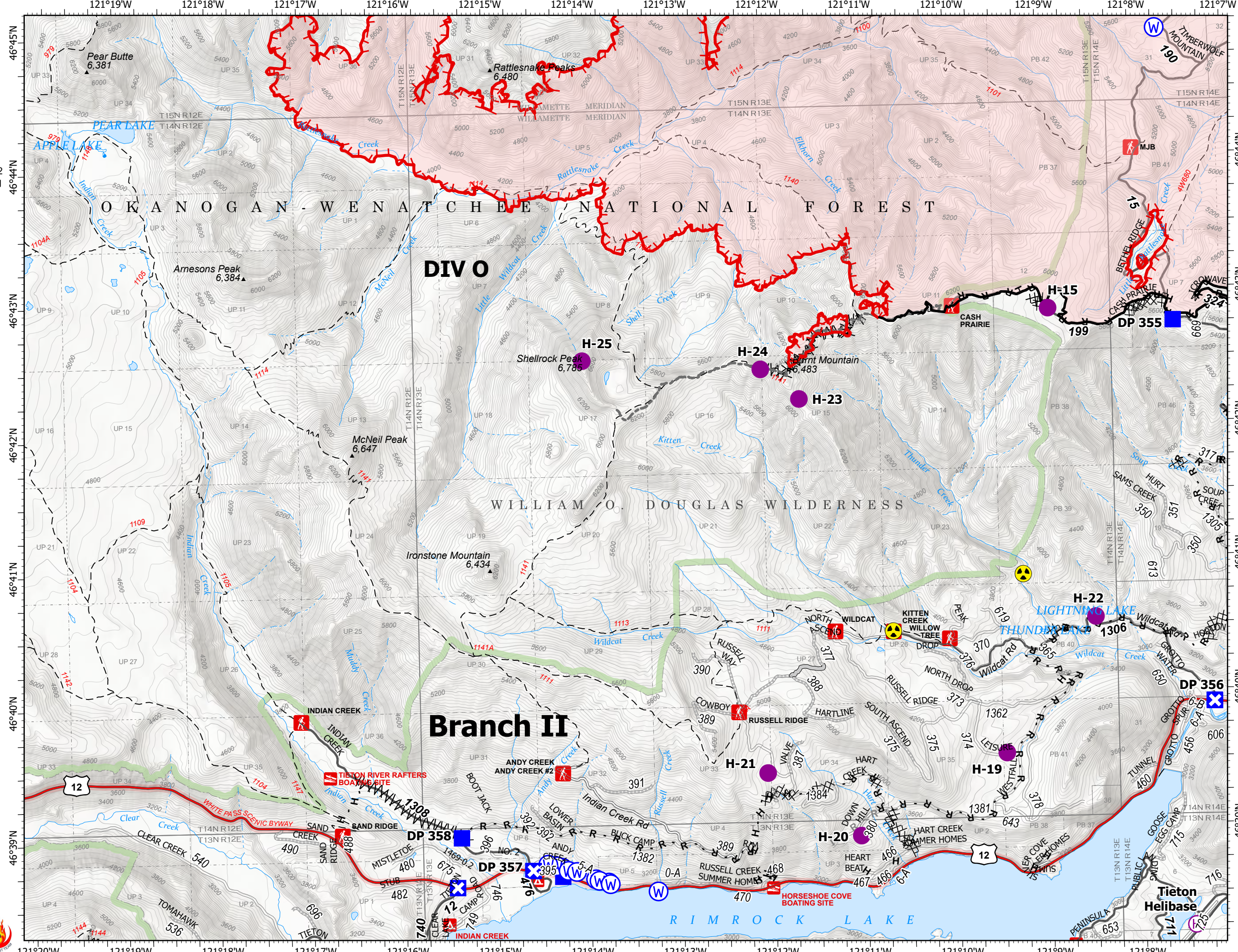
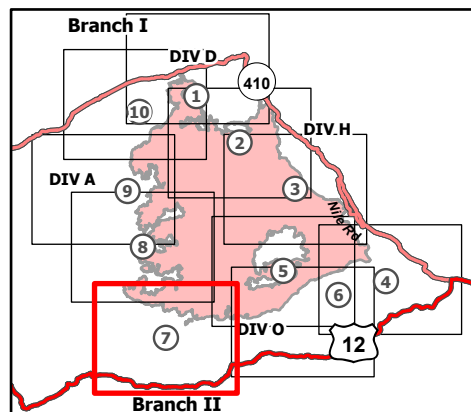
9/20/2021

104,853 acres at 9/17/2021 1700

Page 7 of 10



- Helispot
- ⊕ Helibase
- Drop Point
- ⊗ Closure
- ⚠ Hazard
- ⊙ Water Source
- - - Completed Dozer Line
- = Completed Fuel Break
- H Completed Hand Line
- R Completed Road as Line
- - - Planned Dozer Line
- R Planned Road as Line
- Access or Improved Road
- - - Other
- Fire Edge
- Contained Line
- Administrative FS Boundary
- FS Wilderness Boundary
- Wildfire Daily Fire Perimeter



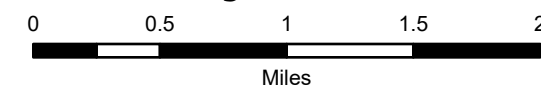
IAP Map

Schneider Springs
WA-OWF-000453

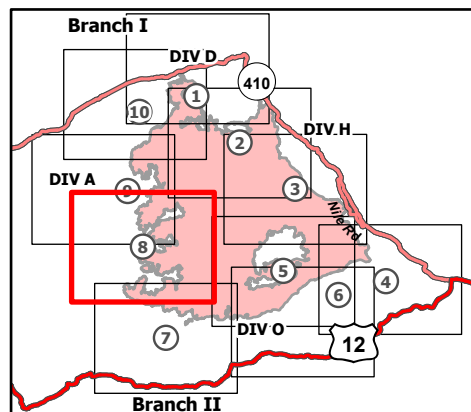
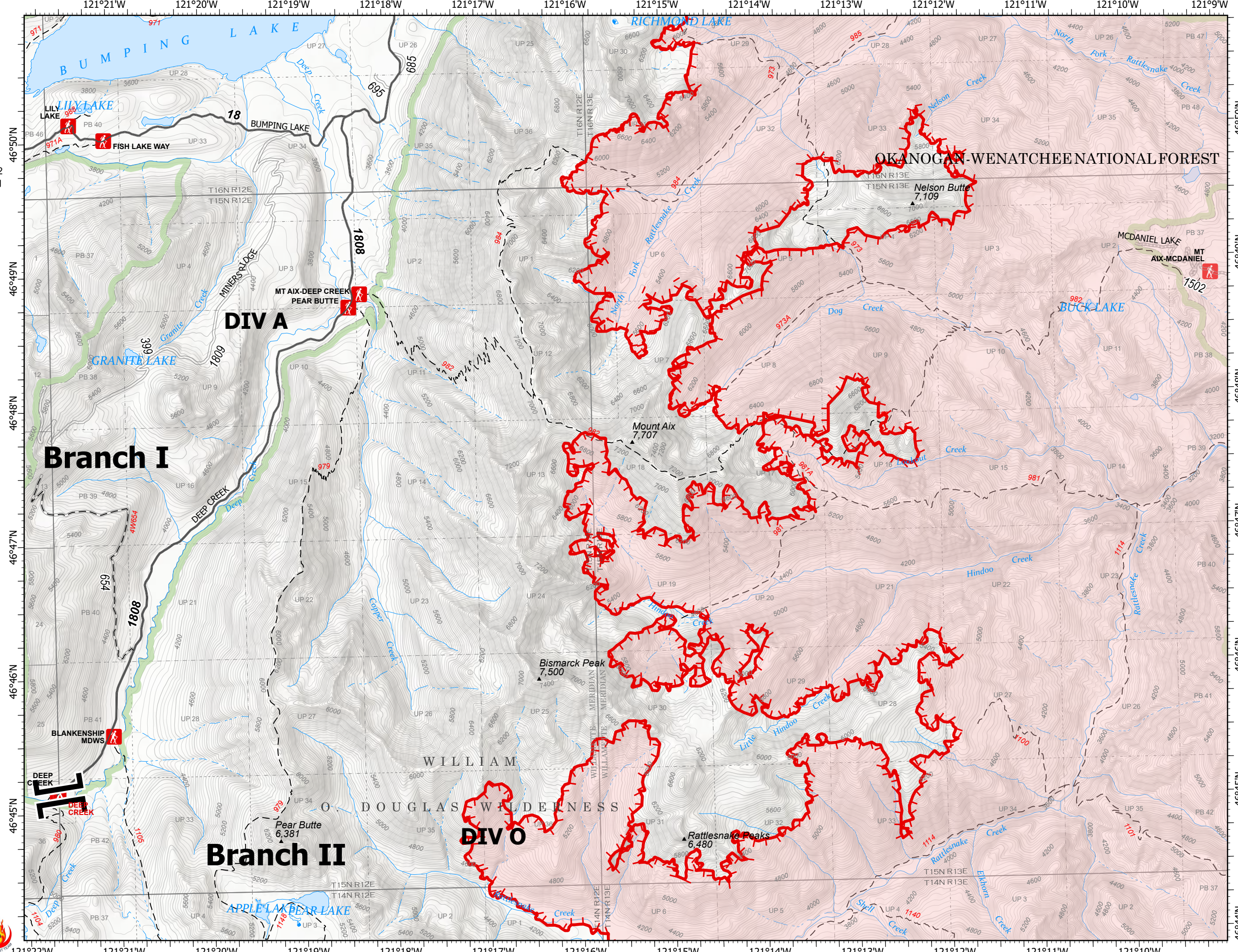
9/20/2021

104,853 acres at 9/17/2021 1700

Page 8 of 10



- Branch Break
- Repeater
- Completed Fuel Break
- Fire Edge
- Administrative FS Boundary
- FS Wilderness Boundary
- Wildfire Daily Fire Perimeter



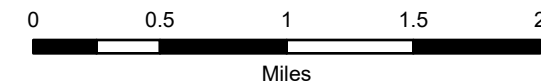
IAP Map

Schneider Springs
WA-OWF-000453

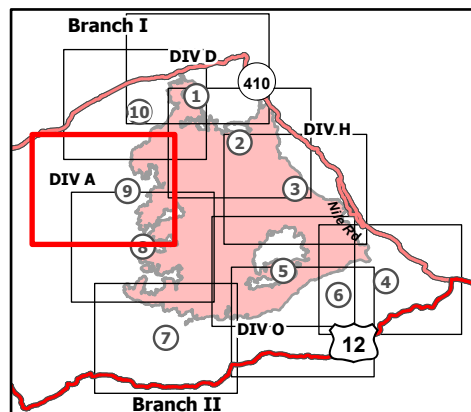
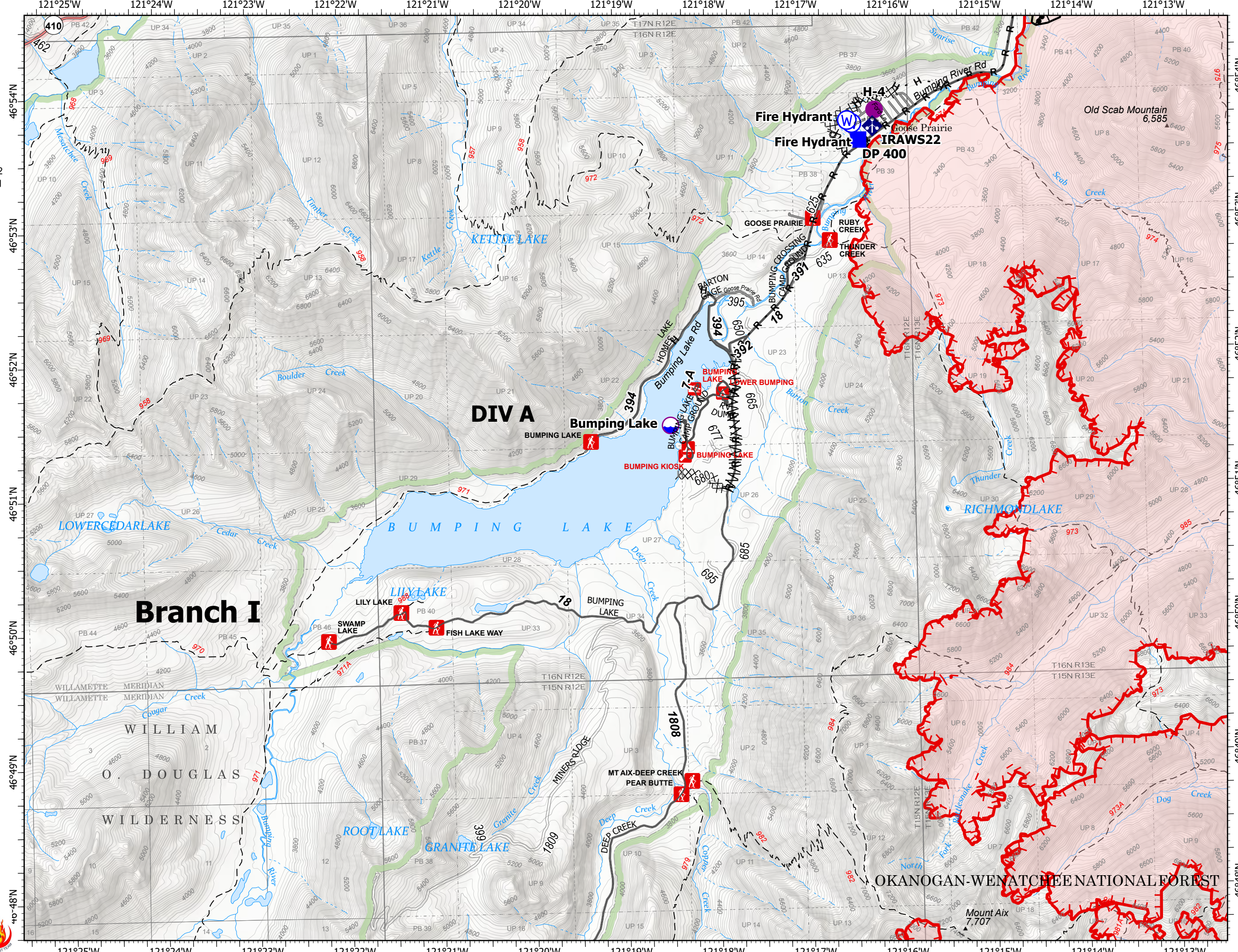
9/20/2021

104,853 acres at 9/17/2021 1700

Page 9 of 10



- Dip Site
- Helispot
- Drop Point
- Mobile Weather Unit
- Water Source
- Completed Burnout
- Completed Dozer Line
- Completed Fuel Break
- Completed Hand Line
- Completed Road as Line
- Planned Hand Line
- Fire Edge
- Contained Line
- Administrative FS Boundary
- FS Wilderness Boundary
- Wildfire Daily Fire Perimeter



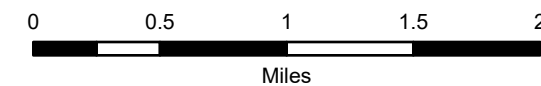
IAP Map

Schneider Springs
WA-OWF-000453

9/20/2021

104,853 acres at 9/17/2021 1700

Page 10 of 10



- Dip Site
- Helispot
- Division Break
- Drop Point
- Closure
- Staging Area
- Lookout
- Hot Spot - Spot Fire
- Value at Risk
- Bridge
- Mobile Weather Unit
- Water Source
- Completed Burnout
- Completed Dozer Line
- Completed Hand Line
- Completed Road as Line
- Planned Hand Line
- Planned Mixed Construction Line
- Planned Road as Line
- Fire Edge
- Contained Line
- Administrative FS Boundary
- FS Wilderness Boundary
- Wildfire Daily Fire Perimeter

