



Yakima County Evacuation Map

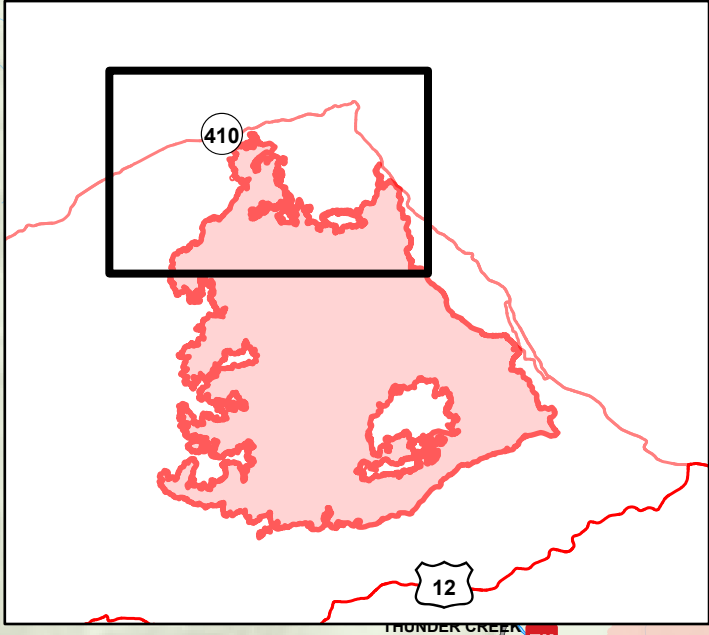
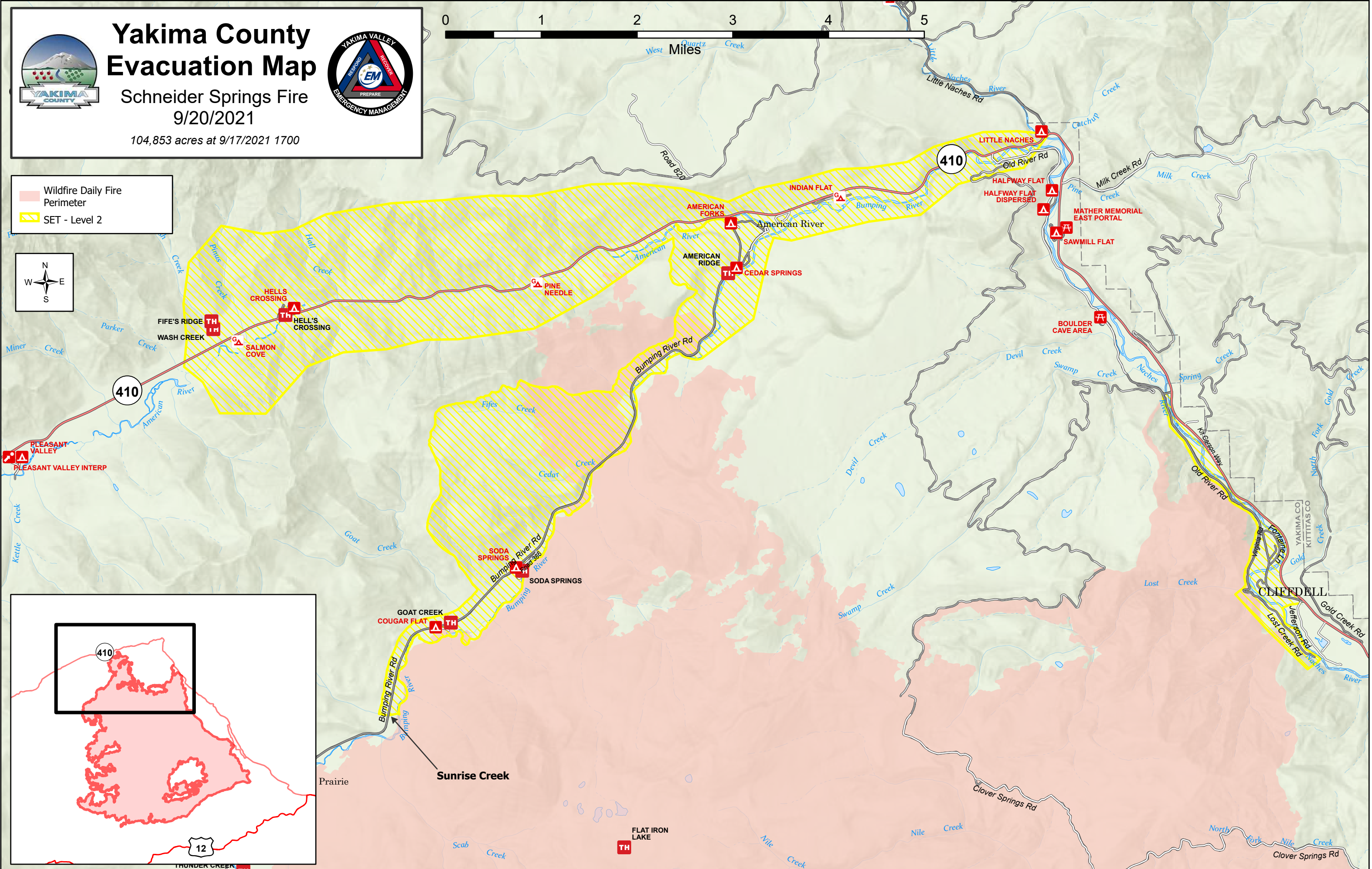
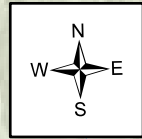
Schneider Springs Fire 9/20/2021

104,853 acres at 9/17/2021 1700



Wildfire Daily Fire Perimeter

SET - Level 2



Map Labels:

- Wildfire Daily Fire Perimeter (Red outline)
- SET - Level 2 (Yellow hatched area)
- Highway 410
- Highway 12
- Landmarks: PLEASANT VALLEY, WASH CREEK, FIFE'S RIDGE, HELLS CROSSING, SALMON COVE, AMERICAN RIVER, AMERICAN FORKS, AMERICAN RIDGE, CEDAR SPRINGS, PINE NEEDLE, INDIAN FLAT, BUMPING RIVER, SODA SPRINGS, GOAT CREEK, COUGAR FLAT, SUNRISE CREEK, FLAT IRON LAKE, DEVIL CREEK SWAMP, LITTLE NACHES, HALFWAY FLAT, MATHER MEMORIAL EAST PORTAL, SAWMILL FLAT, BOULDER CAVE AREA, CLIFFDELL.
- Rivers and Creeks: American River, Bumping River, Cedar Creek, Fijes Creek, Goat Creek, Naches River, Milk Creek, Spring Creek, Niles Creek, North Fork Niles Creek, Lost Creek, Gold Creek, North Fork Gold Creek, Virginie Rd, Old River Rd, Milk Creek Rd, Catchup Creek, Devil Creek, Swamp Creek, Clover Springs Rd, Scab Creek, Nile Creek, North Fork Nile Creek.