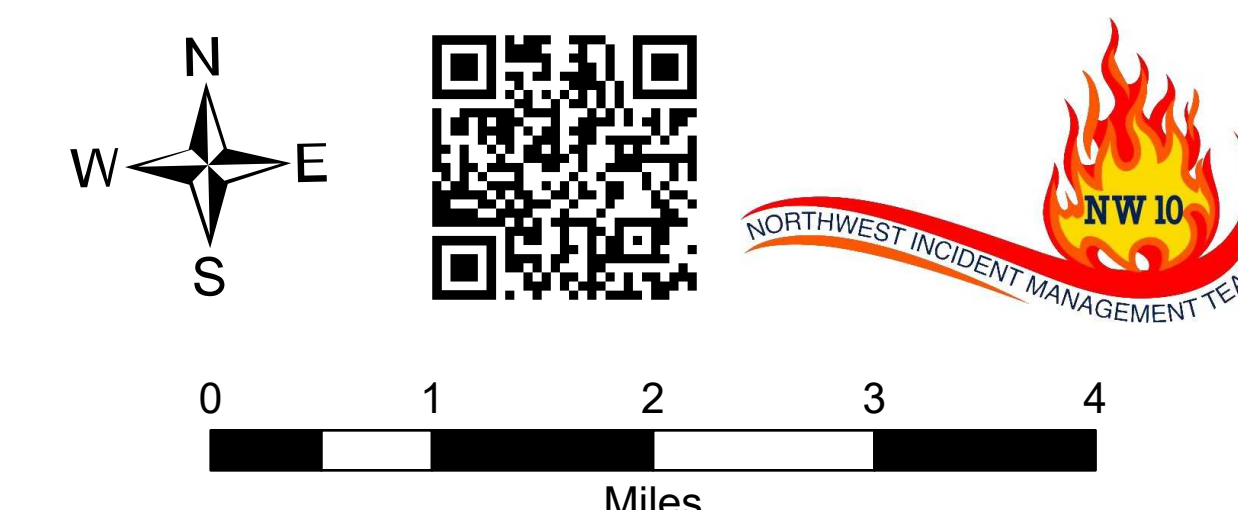


# Briefing Map

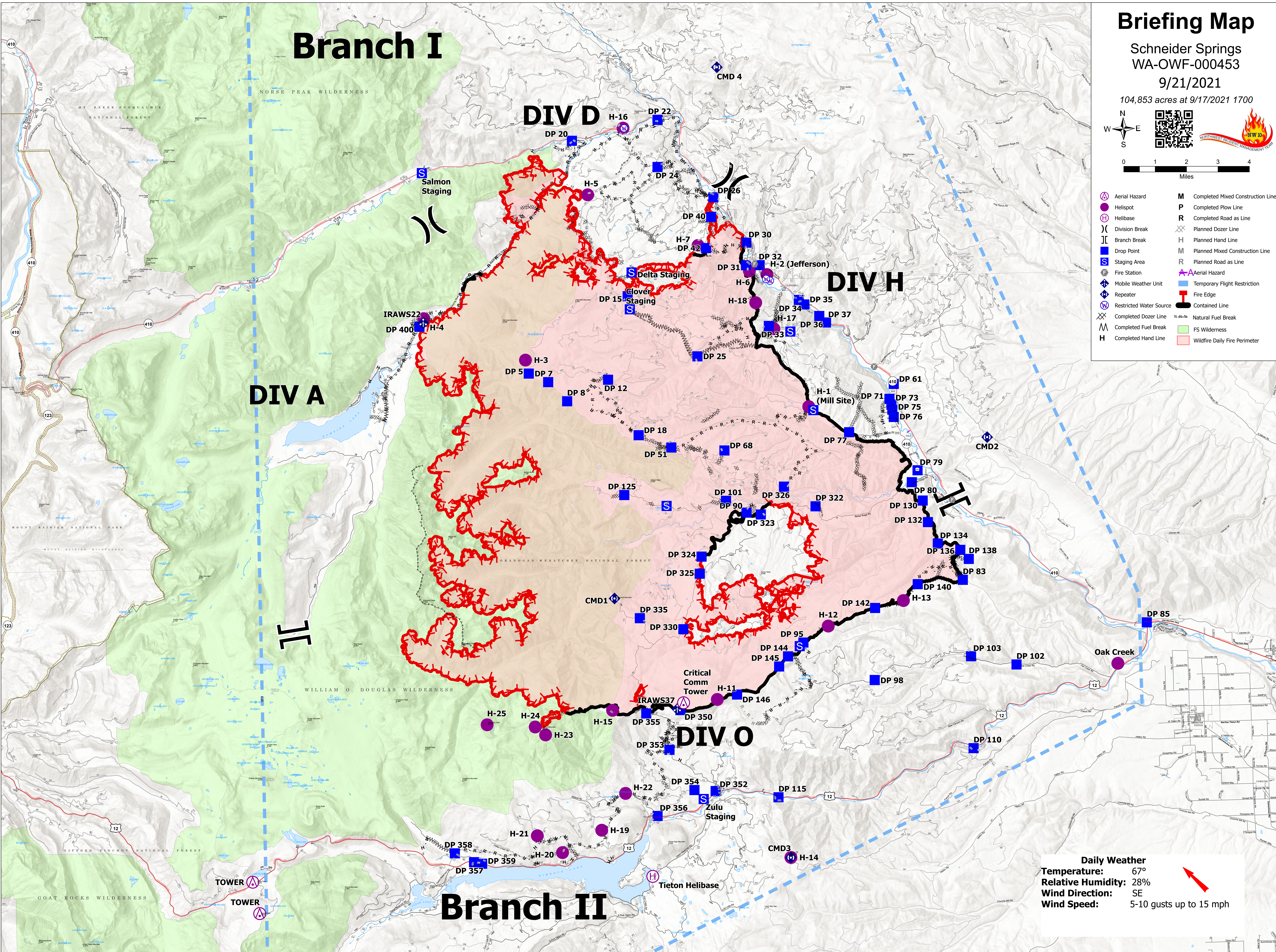
Schneider Springs  
WA-OWF-000453

9/21/2021

104,853 acres at 9/17/2021 1700



- |  |                         |  |                                   |
|--|-------------------------|--|-----------------------------------|
|  | Aerial Hazard           |  | Completed Mixed Construction Line |
|  | Helispot                |  | Completed Plow Line               |
|  | Helibase                |  | Completed Road as Line            |
|  | Division Break          |  | Planned Dozer Line                |
|  | Branch Break            |  | Planned Hand Line                 |
|  | Drop Point              |  | Planned Mixed Construction Line   |
|  | Staging Area            |  | Planned Road as Line              |
|  | Fire Station            |  | Aerial Hazard                     |
|  | Mobile Weather Unit     |  | Temporary Flight Restriction      |
|  | Repeater                |  | Fire Edge                         |
|  | Restricted Water Source |  | Contained Line                    |
|  | Completed Dozer Line    |  | Natural Fuel Break                |
|  | Completed Fuel Break    |  | FS Wilderness                     |
|  | Completed Hand Line     |  | Wildfire Daily Fire Perimeter     |



**Daily Weather**  
Temperature: 67°  
Relative Humidity: 28%  
Wind Direction: SE  
Wind Speed: 5-10 gusts up to 15 mph