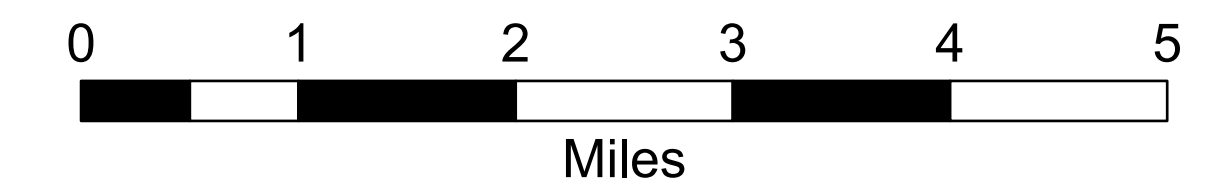
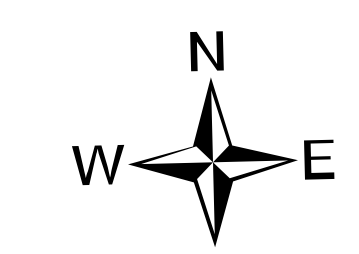


# Transportation Map

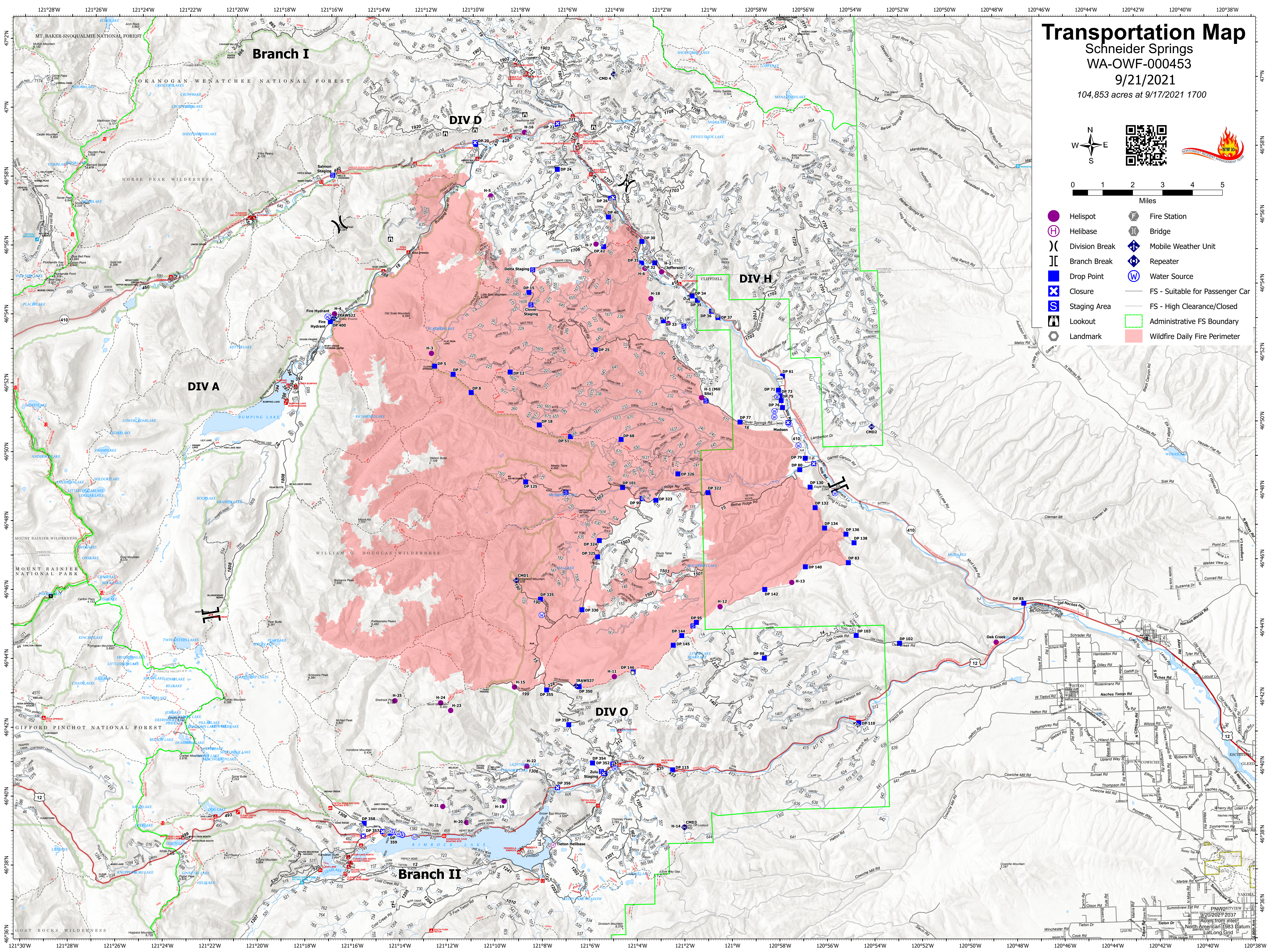
Schneider Springs  
WA-OWF-000453

9/21/2021

104,853 acres at 9/17/2021 1700



- Helispot
- ⊕ Helibase
- ⌋ Division Break
- ⌋ Branch Break
- Drop Point
- ⊗ Closure
- Ⓢ Staging Area
- 🏠 Lookout
- ⬢ Landmark
- 🚒 Fire Station
- ⌋ Bridge
- 📶 Mobile Weather Unit
- 📶 Repeater
- 🌊 Water Source
- FS - Suitable for Passenger Car
- FS - High Clearance/Closed
- 🟩 Administrative FS Boundary
- 🟥 Wildfire Daily Fire Perimeter



Acres from Intel  
North American 1983 Datum  
at Long Grid