

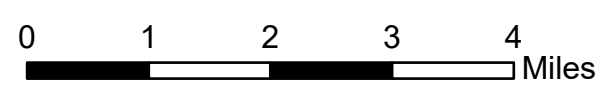
121°30'W 121°28'W 121°26'W 121°24'W 121°22'W 121°20'W 121°18'W 121°16'W 121°14'W 121°12'W 121°10'W 121°8'W 121°6.01'W 121°4'W 121°2'W 121°W 120°58'W 120°56'W 120°54'W 120°52'W 120°50'W 120°48'W 120°46'W

Progression Map

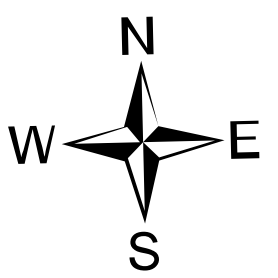
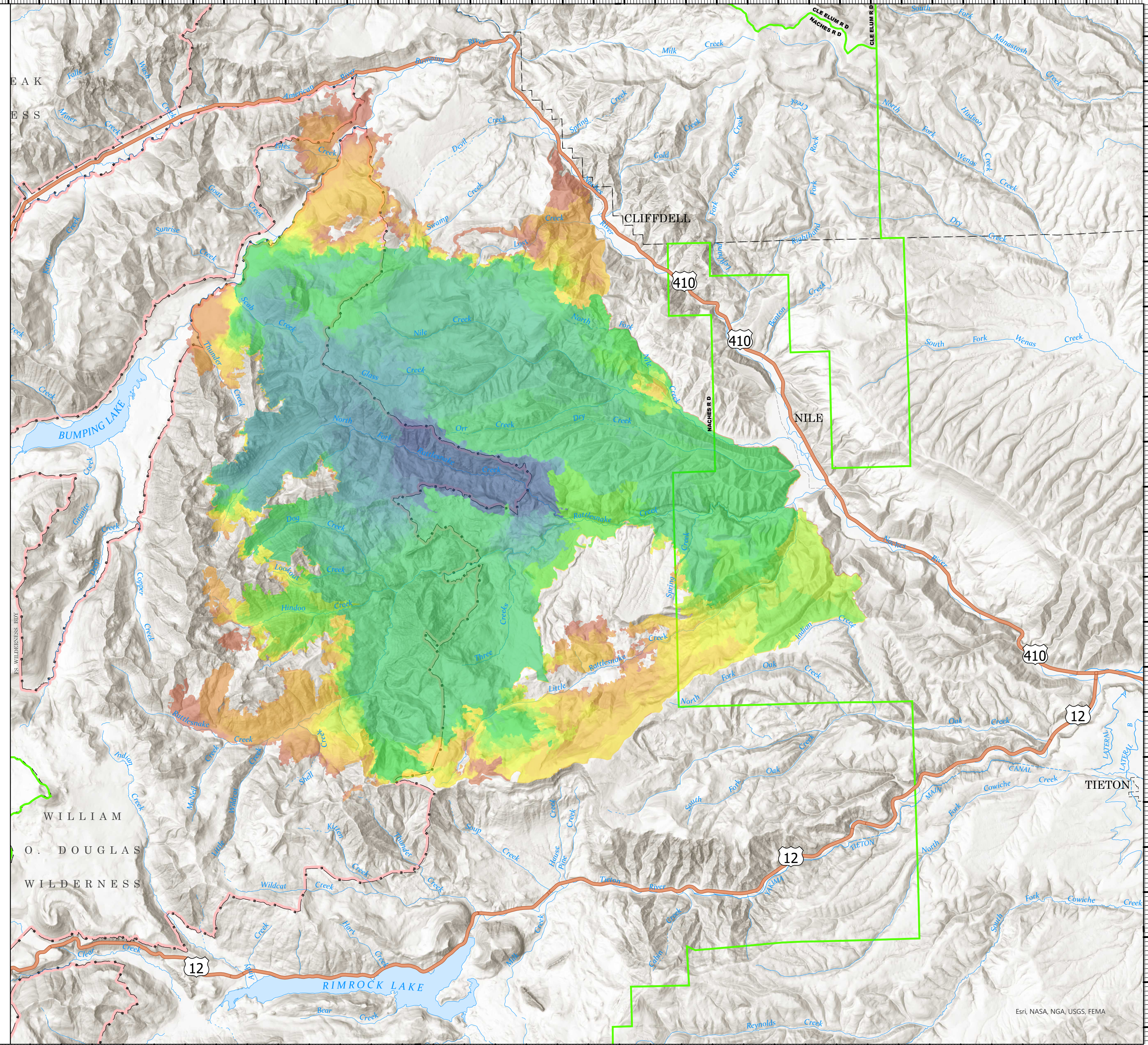
Schneider Springs
WA-OWF-000453

9/21/2021

105,445 acres at 9/20/2021 2025



- █ Proclaimed FS Boundary
- █ Federal Wilderness Boundary
- █ 08/05/2021, 3099 ac growth, 3099 ac total
- █ 08/07/2021, 1034 ac growth, 4133 ac total
- █ 08/08/2021, 87 ac growth, 4220 ac total
- █ 08/09/2021, 1423 ac growth, 5643 ac total
- █ 08/10/2021, 1505 ac growth, 7148 ac total
- █ 08/11/2021, 1852 ac growth, 9000 ac total
- █ 08/12/2021, 0 ac growth, 9000 ac total
- █ 08/13/2021, 4665 ac growth, 13665 ac total
- █ 08/14/2021, 1377 ac growth, 15042 ac total
- █ 08/15/2021, 1474 ac growth, 16516 ac total
- █ 08/16/2021, 2320 ac growth, 18836 ac total
- █ 08/17/2021, 9507 ac growth, 28343 ac total
- █ 08/18/2021, 3525 ac growth, 31868 ac total
- █ 08/19/2021, 31632 ac growth, 63500 ac total
- █ 08/21/2021, 954 ac growth, 64454 ac total
- █ 08/22/2021, 3080 ac growth, 67534 ac total
- █ 08/25/2021, 4373 ac growth, 71907 ac total
- █ 08/26/2021, 1496 ac growth, 73403 ac total
- █ 08/27/2021, 1652 ac growth, 75055 ac total
- █ 08/28/2021, 1709 ac growth, 76764 ac total
- █ 08/29/2021, 0 ac growth, 76764 ac total
- █ 08/30/2021, 4077 ac growth, 80841 ac total
- █ 08/31/2021, 1381 ac growth, 82222 ac total
- █ 09/01/2021, 2287 ac growth, 84509 ac total
- █ 09/02/2021, 1130 ac growth, 85639 ac total
- █ 09/03/2021, 2714 ac growth, 88353 ac total
- █ 09/04/2021, 1532 ac growth, 89885 ac total
- █ 09/05/2021, 2890 ac growth, 92775 ac total
- █ 09/06/2021, 1431 ac growth, 94206 ac total
- █ 09/07/2021, 3082 ac growth, 97288 ac total
- █ 09/08/2021, 2110 ac growth, 99398 ac total
- █ 09/10/2021, 2235 ac growth, 101633 ac total
- █ 09/11/2021, 414 ac growth, 102047 ac total
- █ 09/12/2021, 309 ac growth, 102356 ac total
- █ 09/13/2021, 386 ac growth, 102742 ac total
- █ 09/16/2021, 2058 ac growth, 104800 ac total
- █ 09/20/2021, 645 ac growth, 105445 ac total



NW10
9/21/2021 1104
Acres from IR
North American 1983 Datum. LatLong Grid

Esri, NASA, NGA, USGS, FEMA

121°30'W 121°28'W 121°26'W 121°24'W 121°22'W 121°20'W 121°18'W 121°16'W 121°14'W 121°12'W 121°10'W 121°8'W 121°6.01'W 121°4'W 121°2'W 121°W 120°58'W 120°56'W 120°54'W 120°52'W 120°50'W 120°48'W