

# Div H

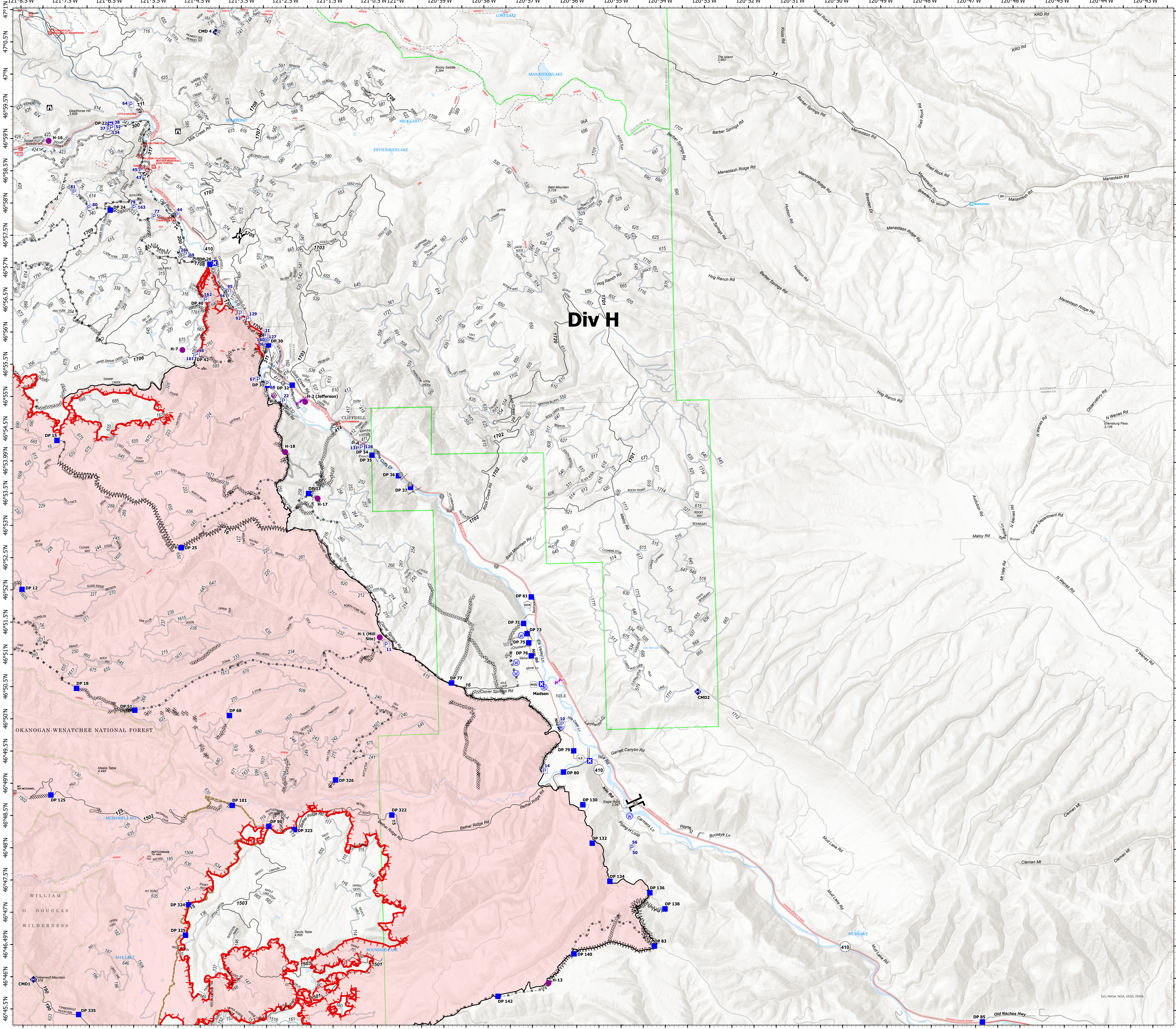
## Accountable Property

Schneider Springs  
WA-OWF-000453  
Division Map Book  
9/22/2021

105,445 acres at 9/20/2021 2025



- Natural Fuel Break
- Accountable Property-Returned to Cache Table Only
- Helispot
- Division Break
- Branch Break
- Drop Point
- Closure
- Lookout
- Fire Station
- Bridge
- Repeater
- Water Source
- Completed Dozer Line
- Completed Fuel Break
- Completed Hand Line
- Completed Mixed Construction Line
- Completed Road as Line
- Access or Improved Road
- Road Repair
- Aerial Hazard
- Fire Edge
- Contained Line
- FS - Suitable for Passenger Car
- FS - High Clearance/Closed
- Wildfire Daily Fire Perimeter
- FS Common Unit Names
- Gap; Summit
- GNIS Populated Places Some
- Campground
- Group Campground
- Trailhead
- Picnic Site
- Snowpark
- Trail
- Tunnel; Bridge
- Primary Highway
- Secondary Highway
- Paved Roads
- Dirt (Not Paved)
- Paved Road
- Gravel Road
- Dirt Roads
- Unimproved Roads
- Closed Roads
- Runway
- Stream / River
- Proclaimed FS Boundary
- Administrative FS Boundary
- Ranger District Boundary
- FS Wilderness Boundary
- State Boundary
- County Boundary
- Census Designated Place
- Lake / Pond
- Lake / Pond (Intermittent)
- Scenic Byway
- World Hillshade



9/21/2021 2037  
Acres from IR  
North American 1983 Datum. Lat/Long  
Grid