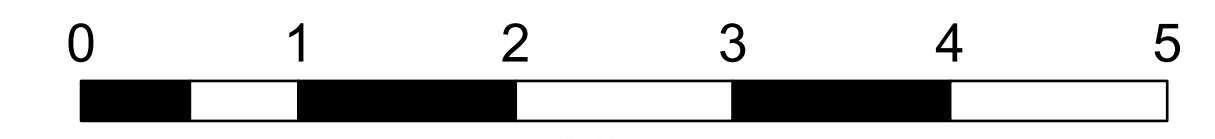
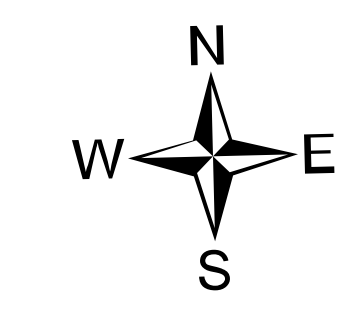


Transportation Map

Schneider Springs
WA-OWF-000453

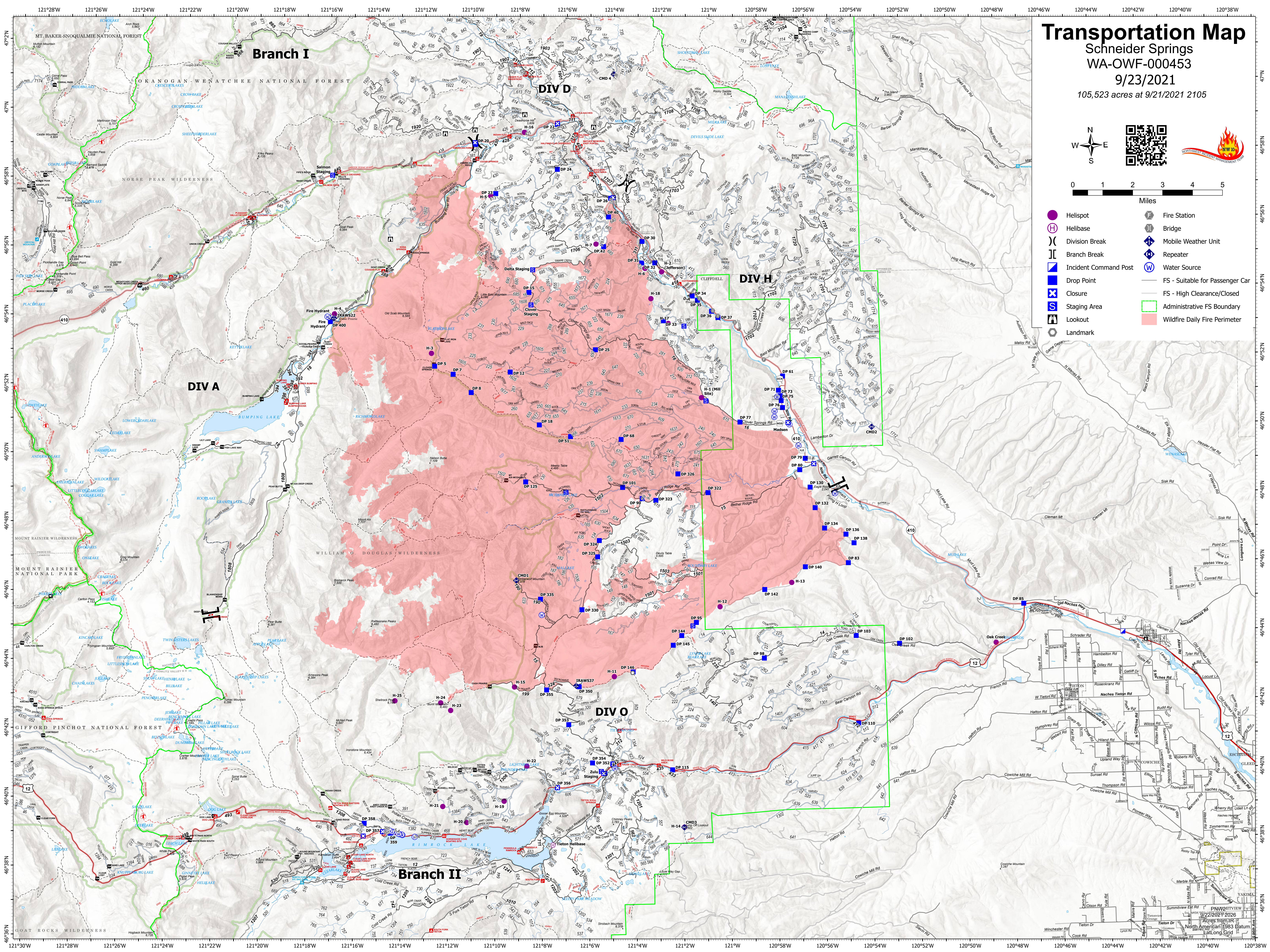
9/23/2021

105,523 acres at 9/21/2021 2105



Miles

- Helispot
- ⊕ Helibase
- ⌋ Division Break
- ⌋ Branch Break
- Ⓜ Incident Command Post
- Drop Point
- ⓧ Closure
- Ⓢ Staging Area
- 🏠 Lookout
- ⦿ Landmark
- 🚒 Fire Station
- ⌋ Bridge
- 📡 Mobile Weather Unit
- 📡 Repeater
- Ⓜ Water Source
- FS - Suitable for Passenger Car
- FS - High Clearance/Closed
- 🟩 Administrative FS Boundary
- 🟪 Wildfire Daily Fire Perimeter



Branch I

DIV D

DIV H

DIV A

DIV O

Branch II

PNW211VIEW
9/23/2021 Y 2026
Acres from IR
North American 1983 Datum
Lat/Long Gtd