

# Div O

## Accountable Property

Schneider Springs  
WA-OWF-000453  
Division Map Book  
9/23/2021

105,523 acres at 9/21/2021 2105



### Natural Fuel Break

Accountable Property-Returned to Cache Table Only

Helispot  
Helibase

Branch Break  
Drop Point

Closure  
Landmark

Fire Station  
Mobile Weather Unit

Repeater  
Water Source

Completed Dozer Line  
Completed Fuel Break

Completed Hand Line  
Completed Mixed Construction Line

Completed Plow Line  
Completed Road as Line

Access or Improved Road  
Road Repair

Aerial Hazard  
Fire Edge

Contained Line  
FS - Suitable for Passenger Car

FS - High Clearance/Closed  
Wildfire Daily Fire Perimeter

FS Common Unit Names  
Gap; Summit

GNIS Populated Places Some  
Campground

Group Campground  
Trailhead

Picnic Site  
Boating Site

Interpretive Site  
Snowpark

National Designated Trail  
Trail

National Designated Trail  
Tunnel; Bridge

Primary Highway  
Secondary Highway

Paved Roads  
Dirt (Not Paved)

Paved Road  
Gravel Road

Dirt Roads  
Unimproved Roads

Closed Roads  
Runway

Bay/Inlet  
Stream / River

Proclaimed FS Boundary  
Administrative FS Boundary

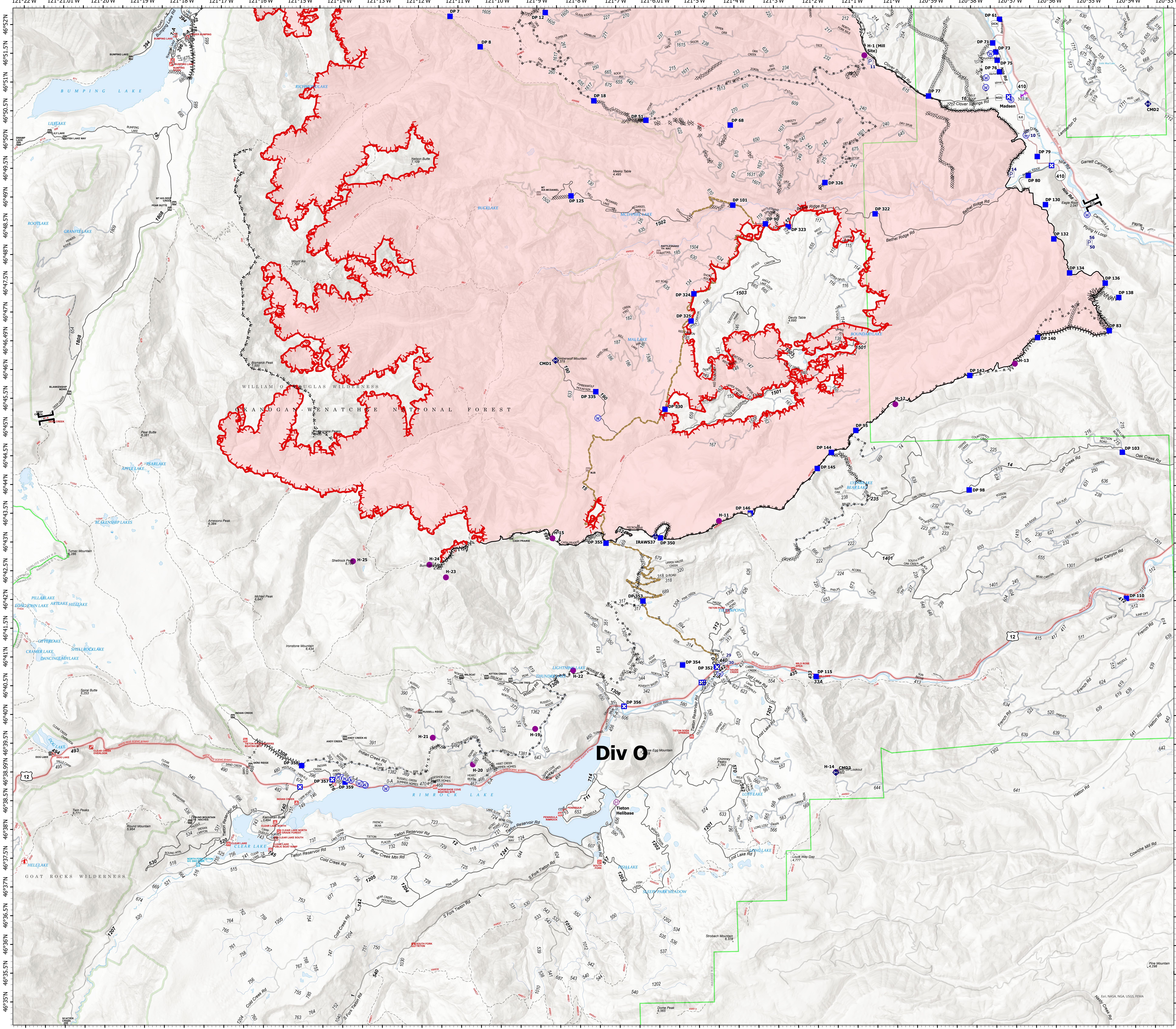
Ranger District Boundary  
FS Wilderness Boundary

State Boundary  
County Boundary

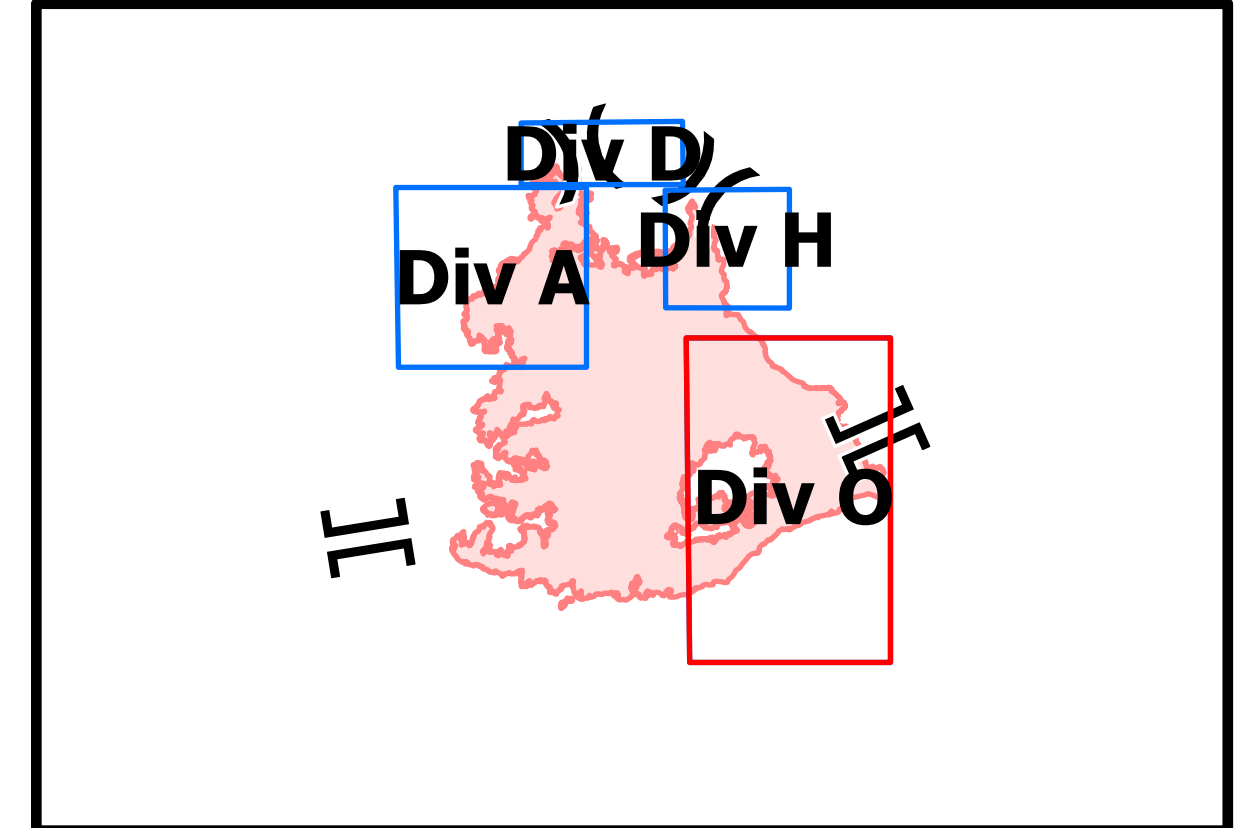
Census Designated Place  
Lake / Pond

Lake / Pond (Intermittent)  
Scenic Byway

World Hillshade



# Div O



9/22/2021 2026  
Acres from IR  
North American 1983 Datum, Lat/Long  
Grid

