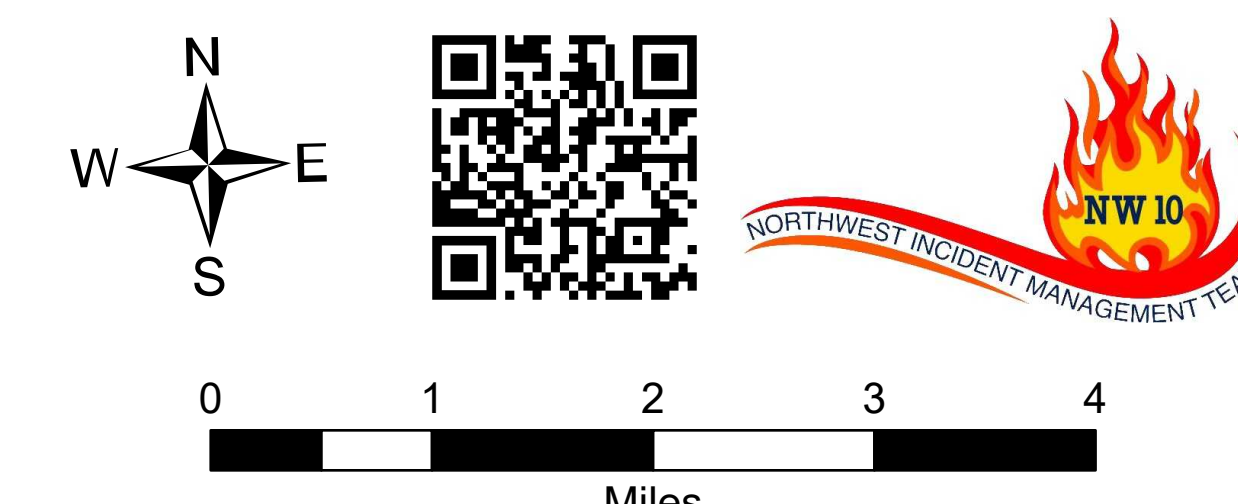


Briefing Map

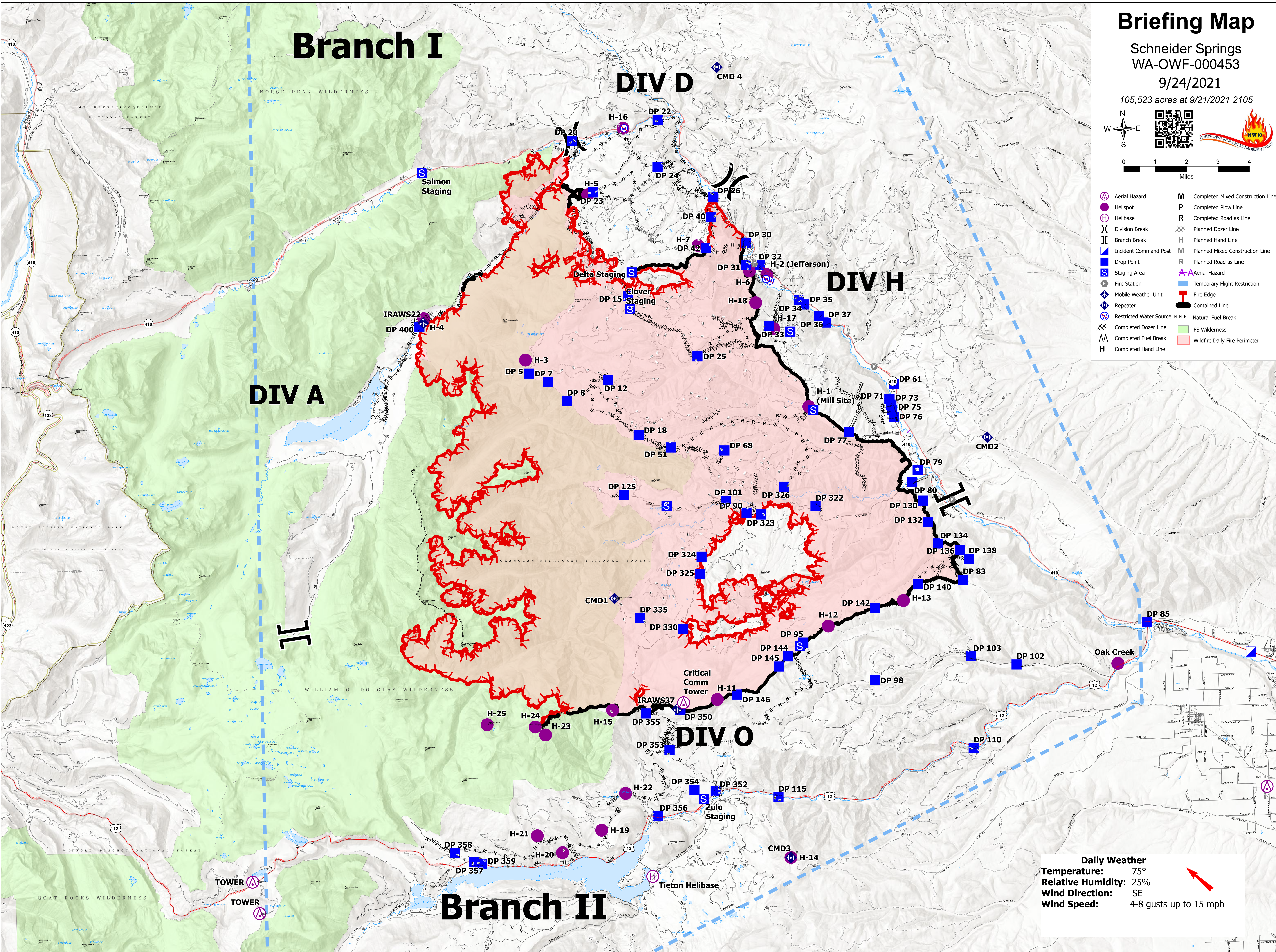
Schneider Springs
WA-OWF-000453

9/24/2021

105,523 acres at 9/21/2021 2105



- | | | | |
|--|-------------------------|--|-----------------------------------|
| | Aerial Hazard | | Completed Mixed Construction Line |
| | Helispot | | Completed Plow Line |
| | Helibase | | Completed Road as Line |
| | Division Break | | Planned Dozer Line |
| | Branch Break | | Planned Hand Line |
| | Incident Command Post | | Planned Mixed Construction Line |
| | Drop Point | | Planned Road as Line |
| | Staging Area | | Aerial Hazard |
| | Fire Station | | Temporary Flight Restriction |
| | Mobile Weather Unit | | Fire Edge |
| | Repeater | | Contained Line |
| | Restricted Water Source | | Natural Fuel Break |
| | Completed Dozer Line | | FS Wilderness |
| | Completed Fuel Break | | Wildfire Daily Fire Perimeter |
| | Completed Hand Line | | |



Daily Weather
Temperature: 75°
Relative Humidity: 25%
Wind Direction: SE
Wind Speed: 4-8 gusts up to 15 mph

