

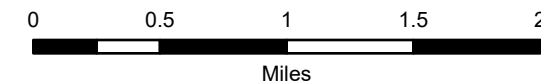
IAP Map

Schneider Springs
WA-OWF-000453

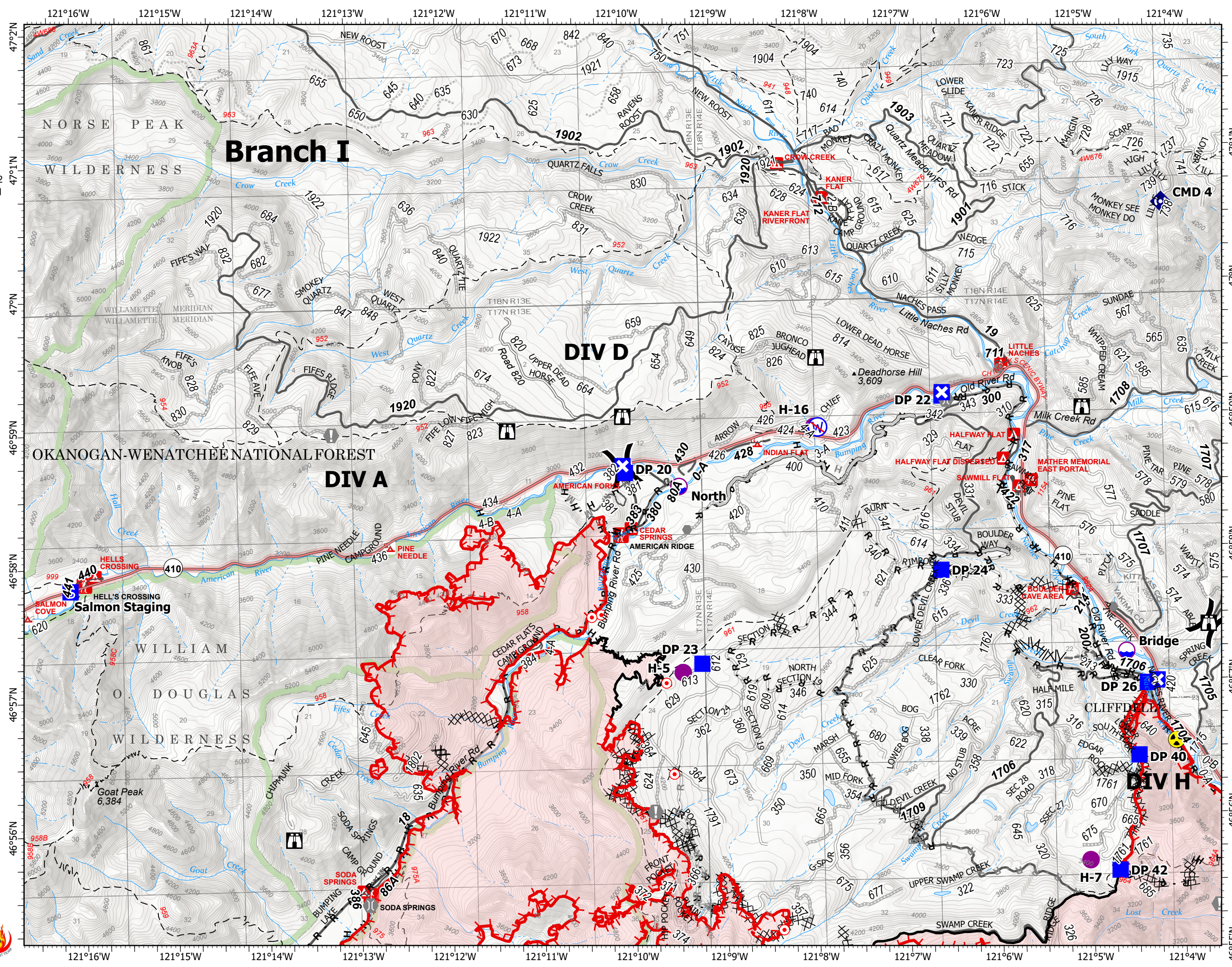
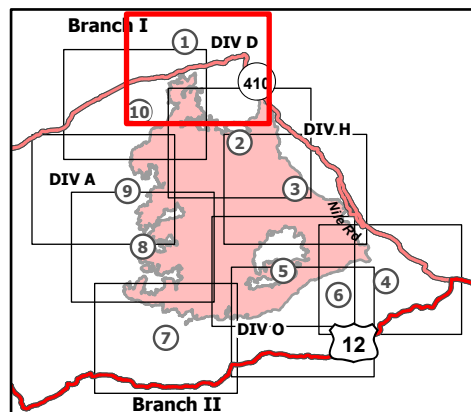
9/24/2021

105,523 acres at 9/21/2021 2105

Page 1 of 10



- Dip Site
- Helispot
- Division Break
- Drop Point
- Closure
- Staging Area
- Lookout
- Hot Spot - Spot Fire
- Value at Risk
- Other
- Bridge
- Repeater
- Hazard
- Restricted Water Source
- Completed Dozer Line
- Completed Fuel Break
- Completed Hand Line
- Completed Road as Line
- Planned Dozer Line
- Planned Hand Line
- Planned Mixed Construction Line
- Planned Road as Line
- Access or Improved Road
- Other
- Fire Edge
- Contained Line
- Administrative FS Boundary
- FS Wilderness Boundary
- Wildfire Daily Fire Perimeter



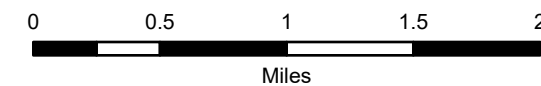
IAP Map

Schneider Springs
WA-OWF-000453

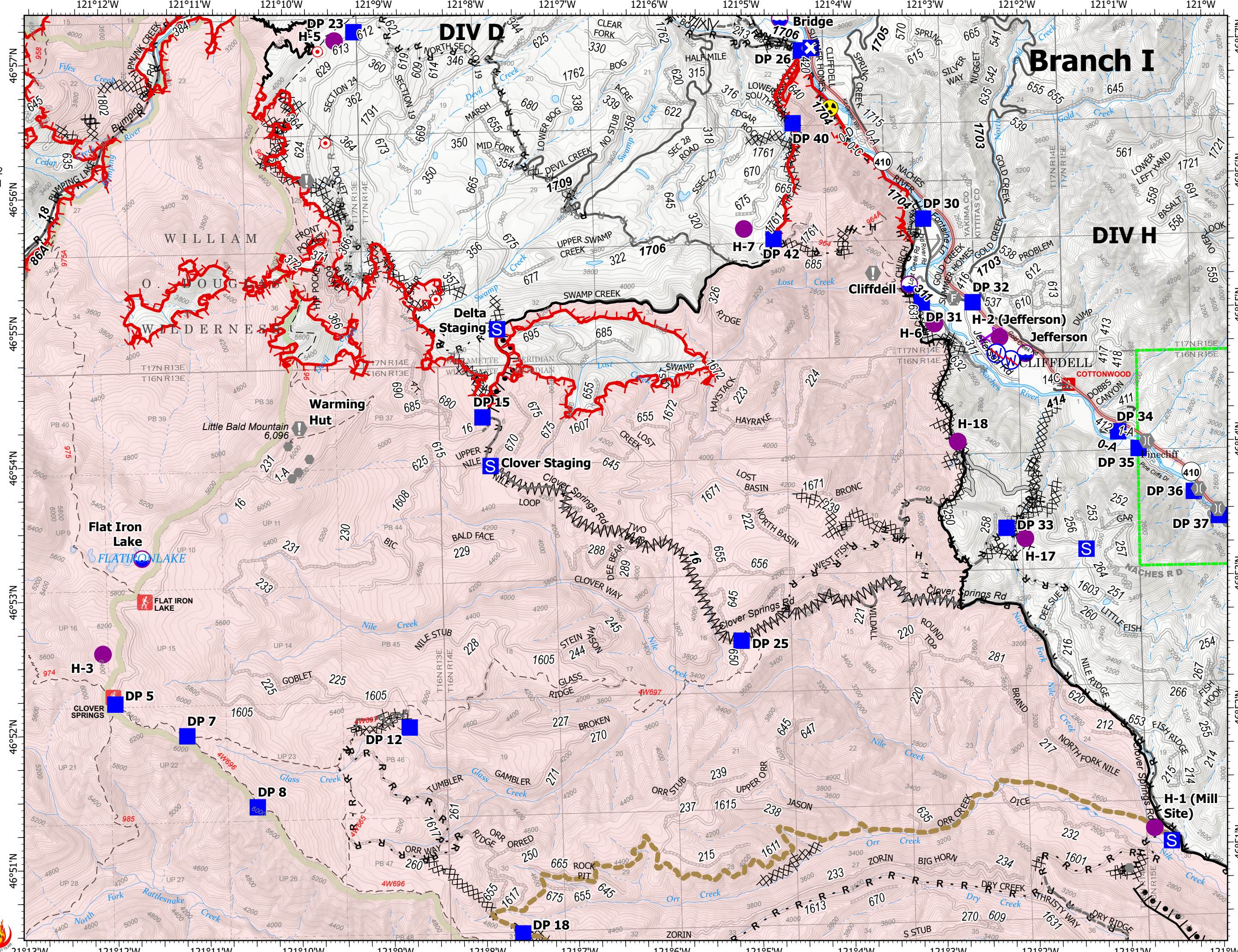
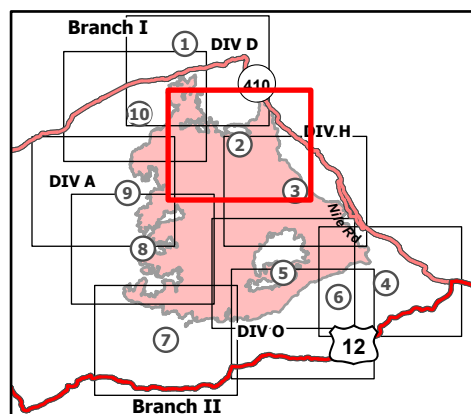
9/24/2021

105,523 acres at 9/21/2021 2105

Page 2 of 10



- Dip Site
- Helispot
- Division Break
- Drop Point
- Closure
- Staging Area
- Lookout
- Hot Spot - Spot Fire
- Value at Risk
- Other
- Fire Station
- Bridge
- Hazard
- Restricted Water Source
- Completed Burnout
- Completed Dozer Line
- Completed Fuel Break
- Completed Hand Line
- Completed Road as Line
- Planned Dozer Line
- Planned Hand Line
- Planned Road as Line
- Access or Improved Road
- Other
- Road Repair
- Aerial Hazard
- Fire Edge
- Contained Line
- Administrative FS Boundary
- FS Wilderness Boundary
- Wildfire Daily Fire Perimeter



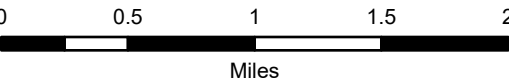
IAP Map

Schneider Springs
WA-OWF-000453

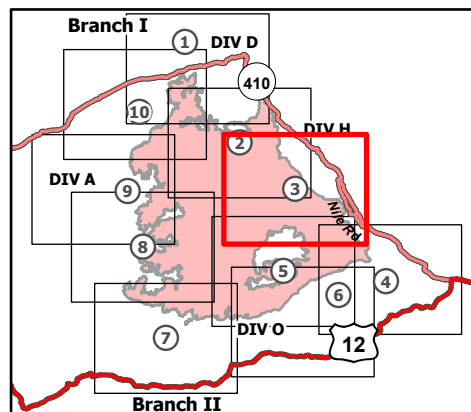
9/24/2021

105,523 acres at 9/21/2021 2105

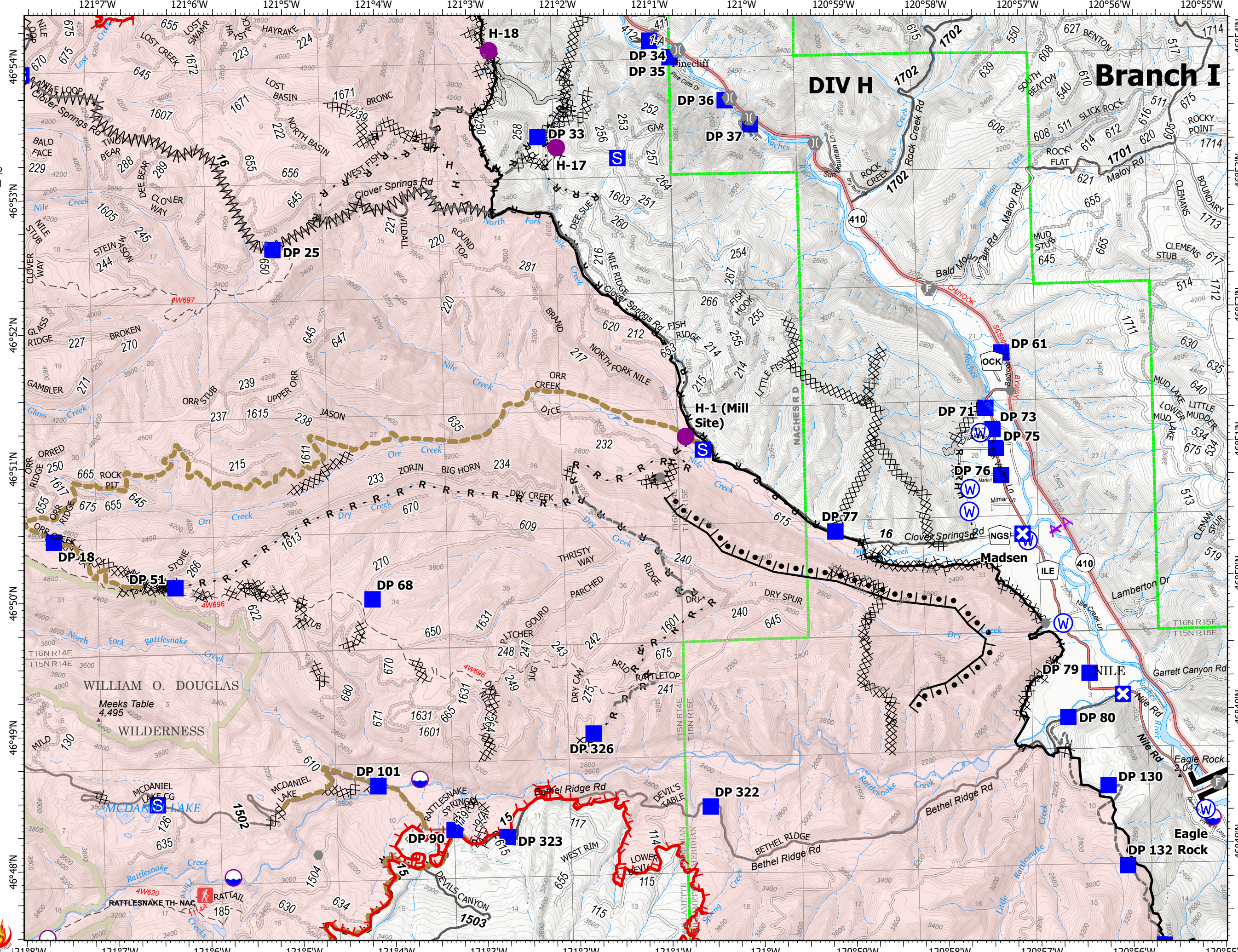
Page 3 of 10



- Dip Site
- Helispot
- Branch Break
- Drop Point
- Closure
- Staging Area
- Other
- Fire Station
- Bridge
- Water Source
- Completed Burnout
- Completed Dozer Line
- Completed Fuel Break
- Completed Hand Line
- Completed Road as Line
- Planned Road as Line
- Access or Improved Road
- Other
- Road Repair
- Aerial Hazard
- Fire Edge
- Contained Line
- Administrative FS Boundary
- FS Wilderness Boundary
- Wildfire Daily Fire Perimeter



9/23/2021 2053
Acres from IR
North American 1983 Datum.
Lat/Long Grid



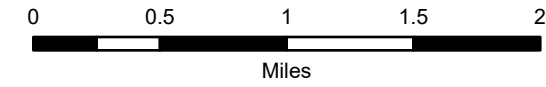
IAP Map

Schneider Springs
WA-OWF-000453

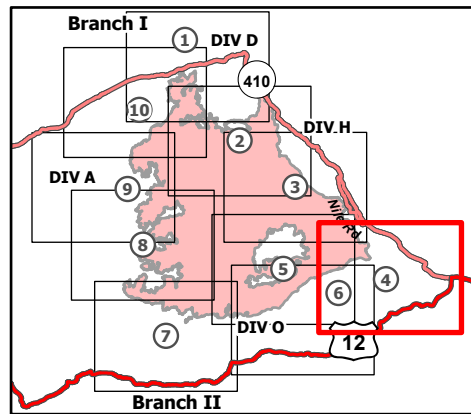
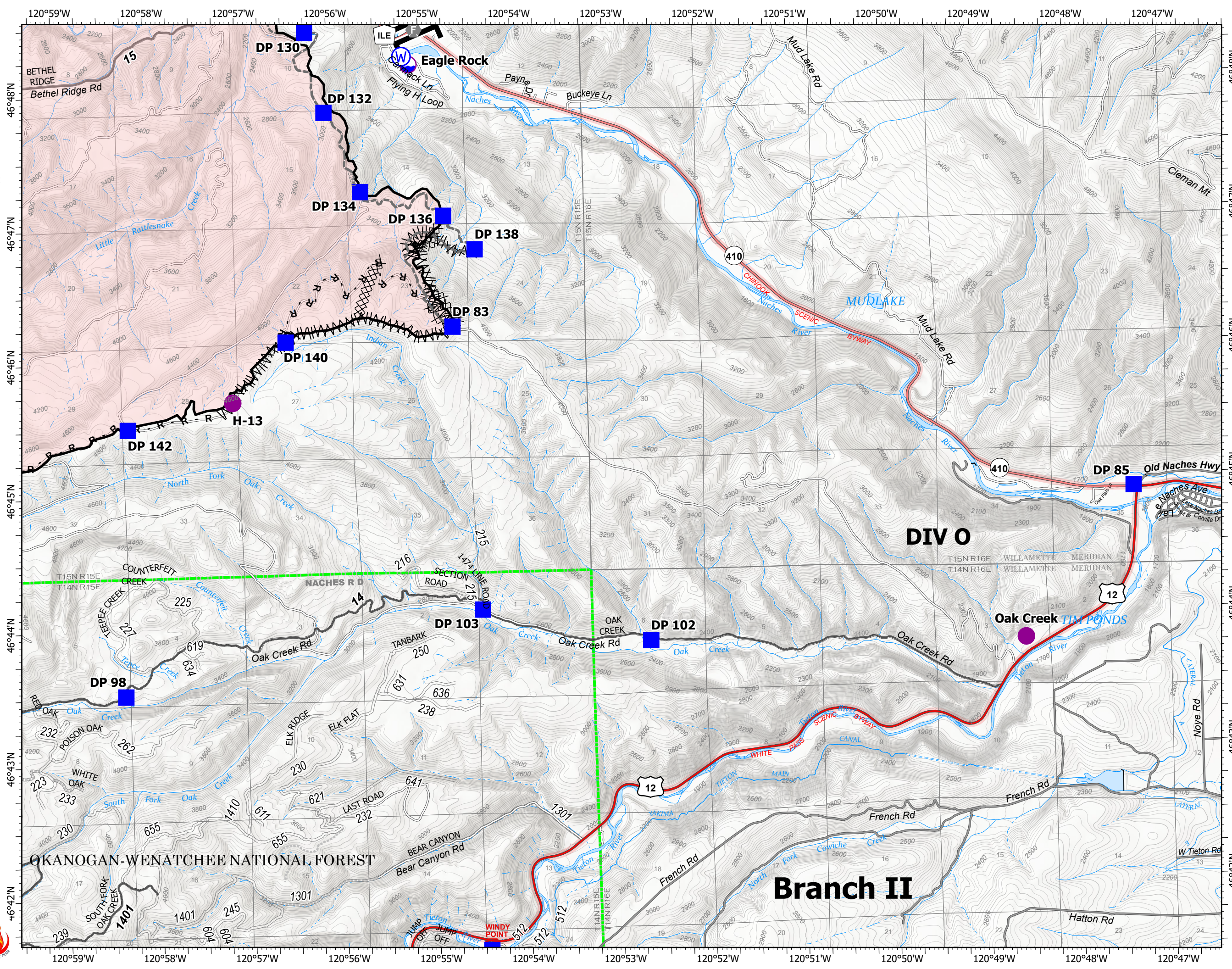
9/24/2021

105,523 acres at 9/21/2021 2105

Page 4 of 10



- Dip Site
- Helispot
- Branch Break
- Drop Point
- Fire Station
- Water Source
- Completed Dozer Line
- Completed Fuel Break
- Completed Road as Line
- Other
- Contained Line
- Administrative FS Boundary
- Wildfire Daily Fire Perimeter



9/23/2021 2053
Acres from IR
North American 1983 Datum.
Lat/Long Grid



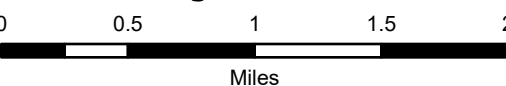
IAP Map

Schneider Springs
WA-OWF-000453

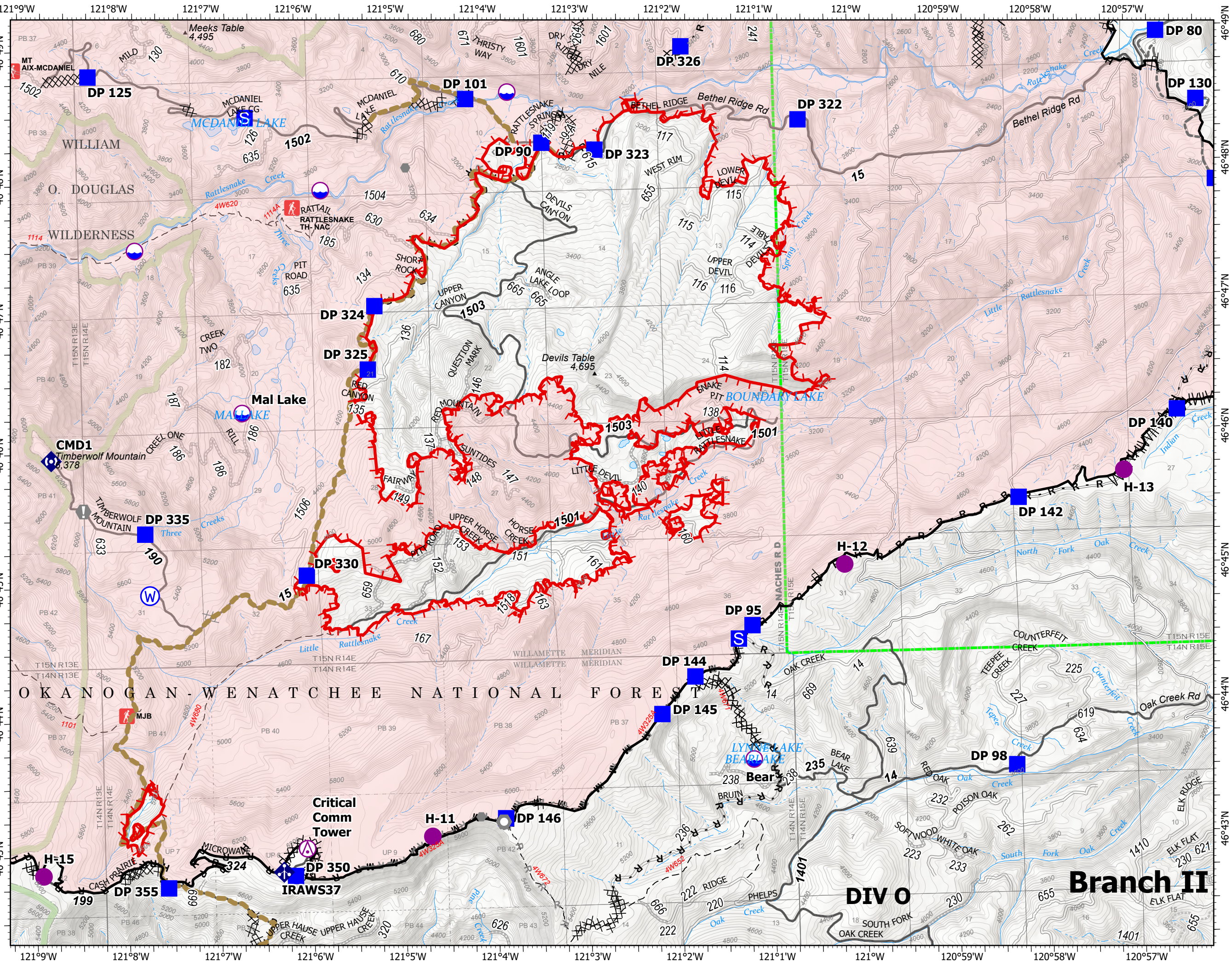
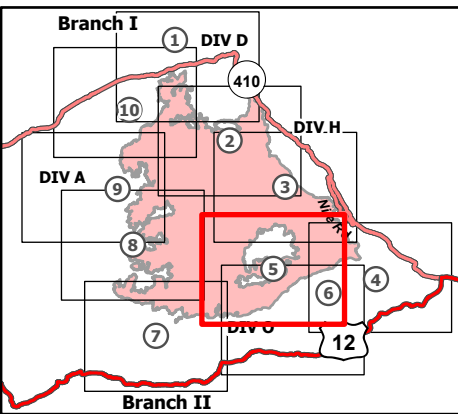
9/24/2021

105,523 acres at 9/21/2021 2105

Page 5 of 10



- ⊗ Aerial Hazard
- ⊙ Dip Site
- Helispot
- Drop Point
- ⊠ Closure
- ⊡ Staging Area
- ⊕ Value at Risk
- Other
- Landmark
- ⊠ Mobile Weather Unit
- ⊠ Repeater
- ⊙ Water Source
- ⊠ Completed Burnout
- ⊠ Completed Dozer Line
- ⊠ Completed Fuel Break
- H Completed Hand Line
- M Completed Mixed Construction Line
- P Completed Plow Line
- R Completed Road as Line
- ⊠ Planned Dozer Line
- R Planned Road as Line
- Other
- Road Repair
- Fire Edge
- Contained Line
- Administrative FS Boundary
- FS Wilderness Boundary
- Wildfire Daily Fire Perimeter



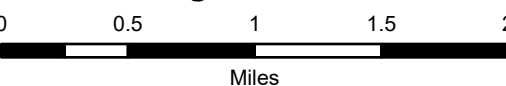
IAP Map

Schneider Springs
WA-OWF-000453

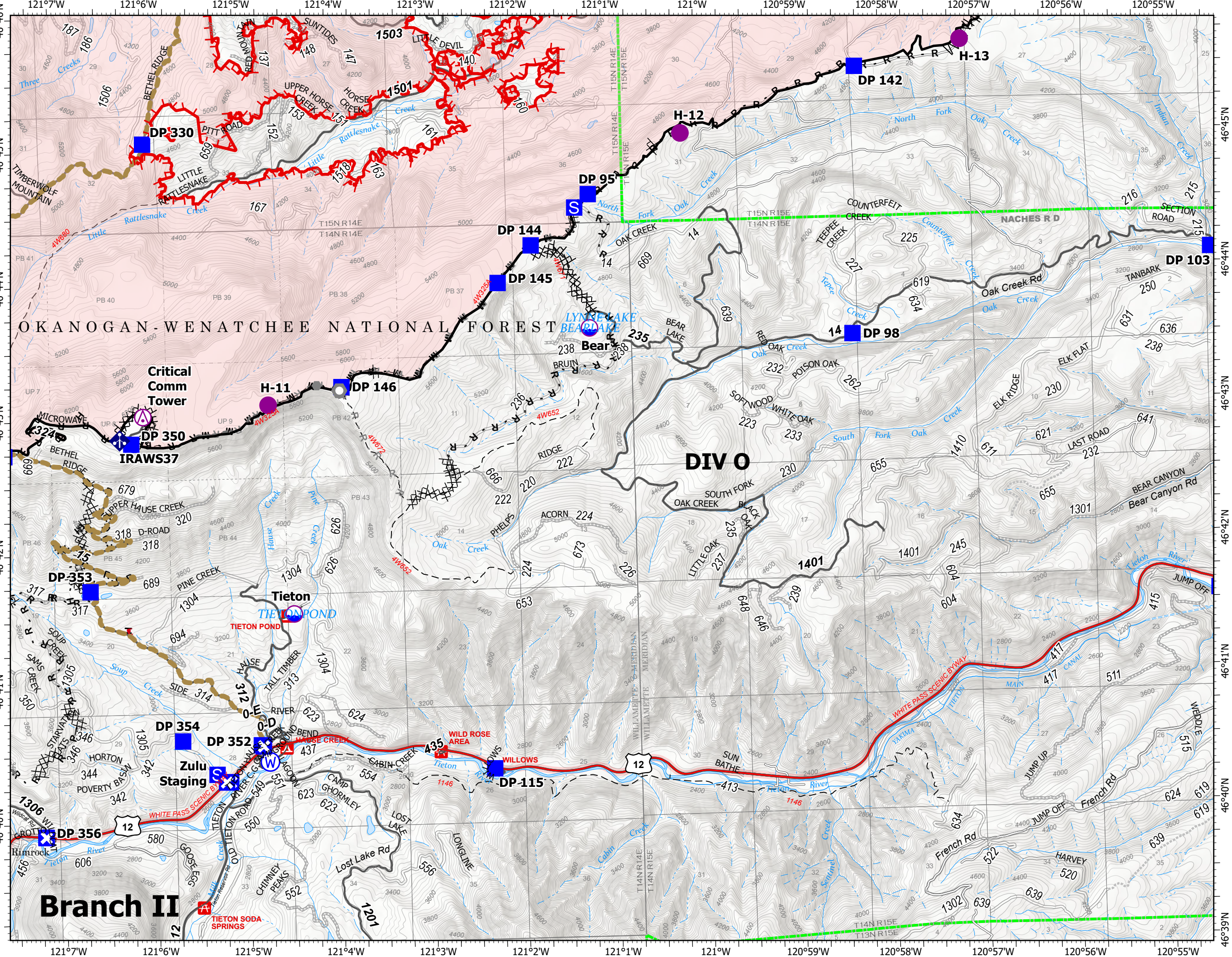
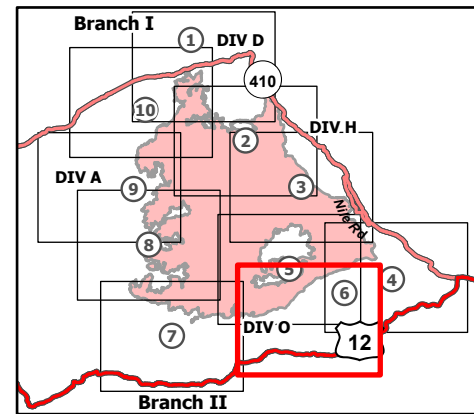
9/24/2021

105,523 acres at 9/21/2021 2105

Page 6 of 10



- ⊗ Aerial Hazard
- Dip Site
- Helispot
- Drop Point
- ⊠ Closure
- ⊡ Staging Area
- Other
- Landmark
- ⚡ Mobile Weather Unit
- ⊕ Water Source
- ⊗ Completed Dozer Line
- ⊗ Completed Fuel Break
- H Completed Hand Line
- M Completed Mixed Construction Line
- P Completed Plow Line
- R Completed Road as Line
- ⊗ Planned Dozer Line
- H Planned Hand Line
- R Planned Road as Line
- - - Fence
- - - Other
- Road Repair
- Fire Edge
- Contained Line
- Administrative FS Boundary
- Wildfire Daily Fire Perimeter



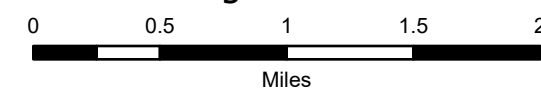
IAP Map

Schneider Springs
WA-OWF-000453

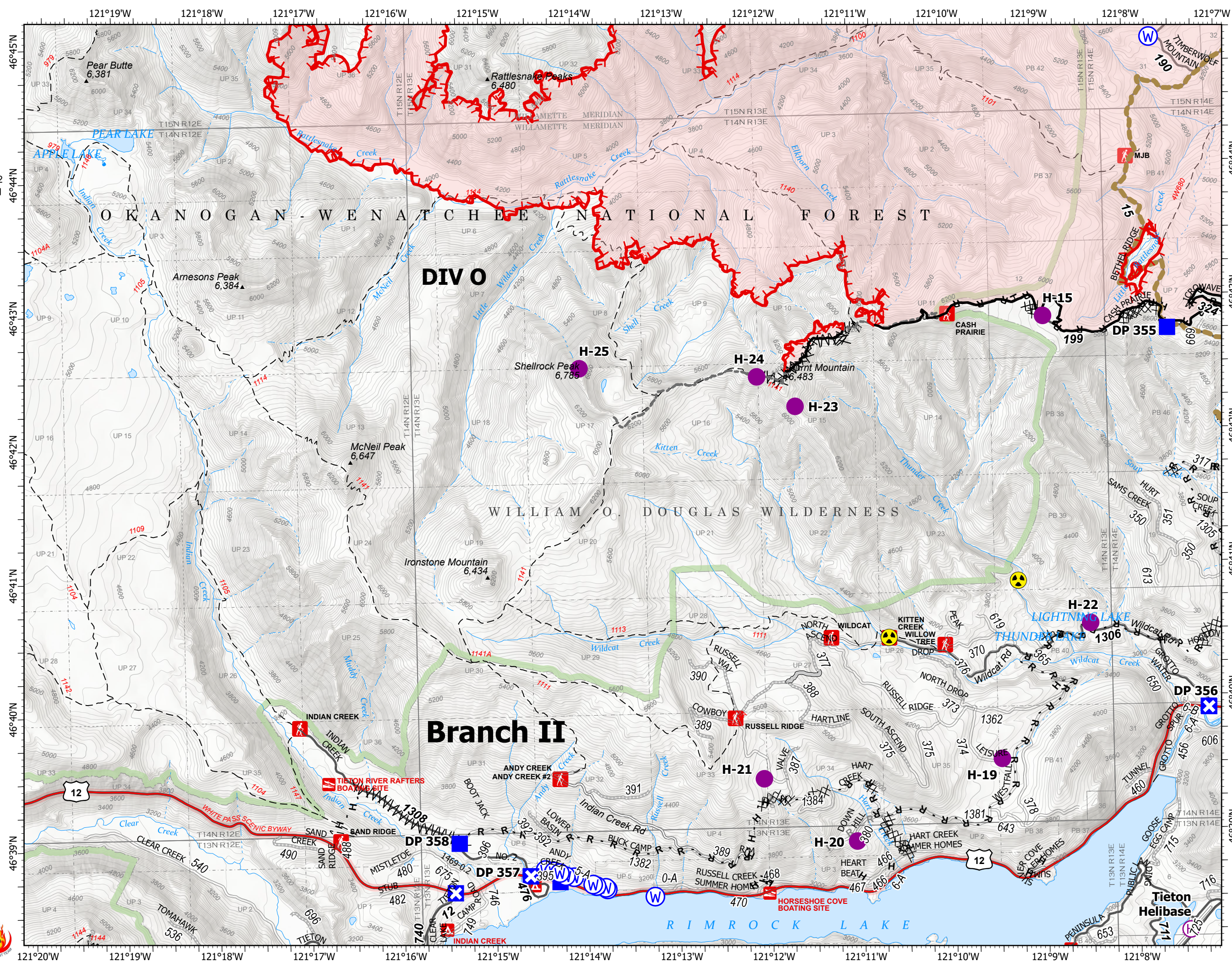
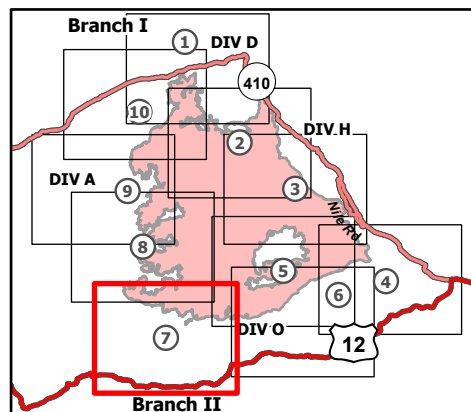
9/24/2021

105,523 acres at 9/21/2021 2105

Page 7 of 10



- Helispot
- ⊕ Helibase
- Drop Point
- ⊠ Closure
- ⚠ Hazard
- ⊙ Water Source
- Completed Dozer Line
- Completed Fuel Break
- H - Completed Hand Line
- R - Completed Road as Line
- Planned Dozer Line
- R - Planned Road as Line
- Access or Improved Road
- Other
- Road Repair
- Fire Edge
- Contained Line
- Administrative FS Boundary
- FS Wilderness Boundary
- Wildfire Daily Fire Perimeter



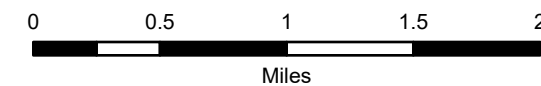
IAP Map

Schneider Springs
WA-OWF-000453

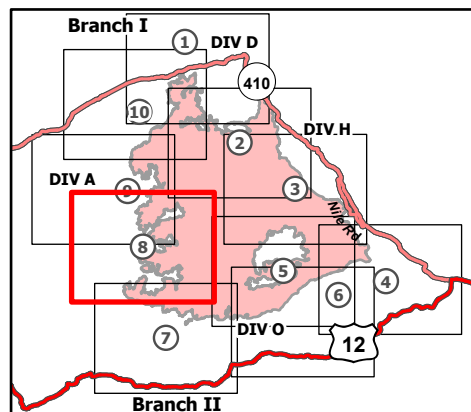
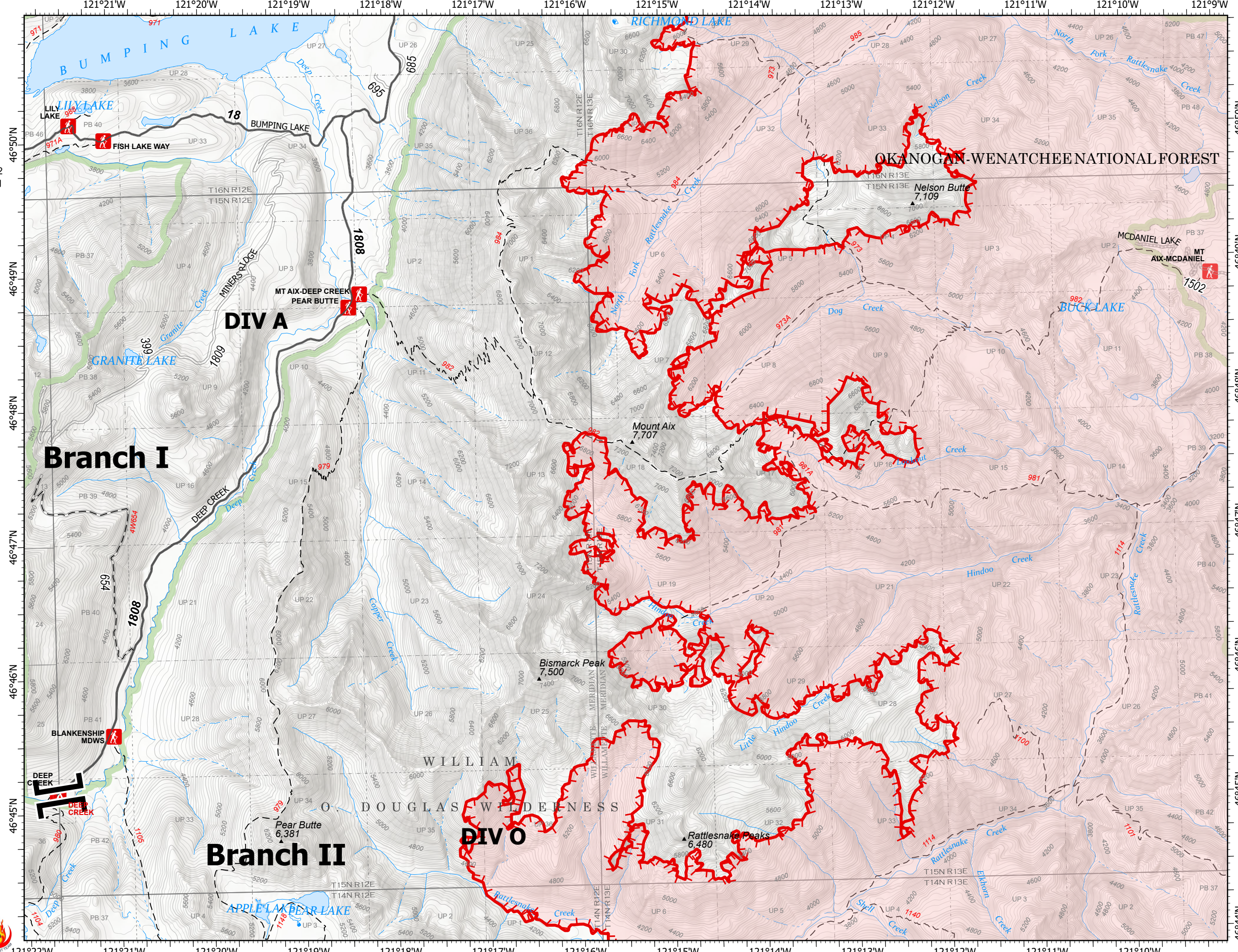
9/24/2021

105,523 acres at 9/21/2021 2105

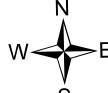
Page 8 of 10



- || Branch Break
- ◆ Repeater
- ≡ Completed Fuel Break
- Fire Edge
- ▭ Administrative FS Boundary
- ▭ FS Wilderness Boundary
- ▭ Wildfire Daily Fire Perimeter



9/23/2021 2054
Acres from IR
North American 1983 Datum.
Lat/Long Grid



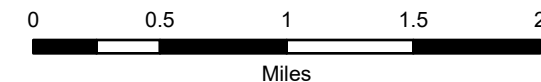
IAP Map

Schneider Springs
WA-OWF-000453

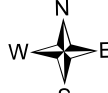
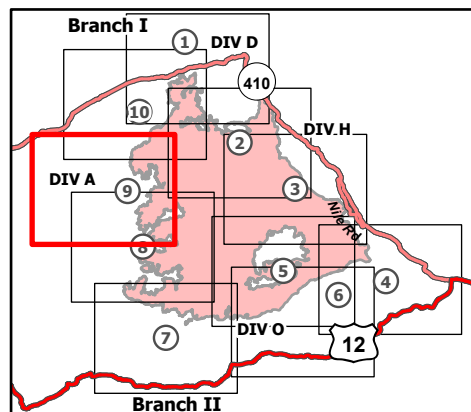
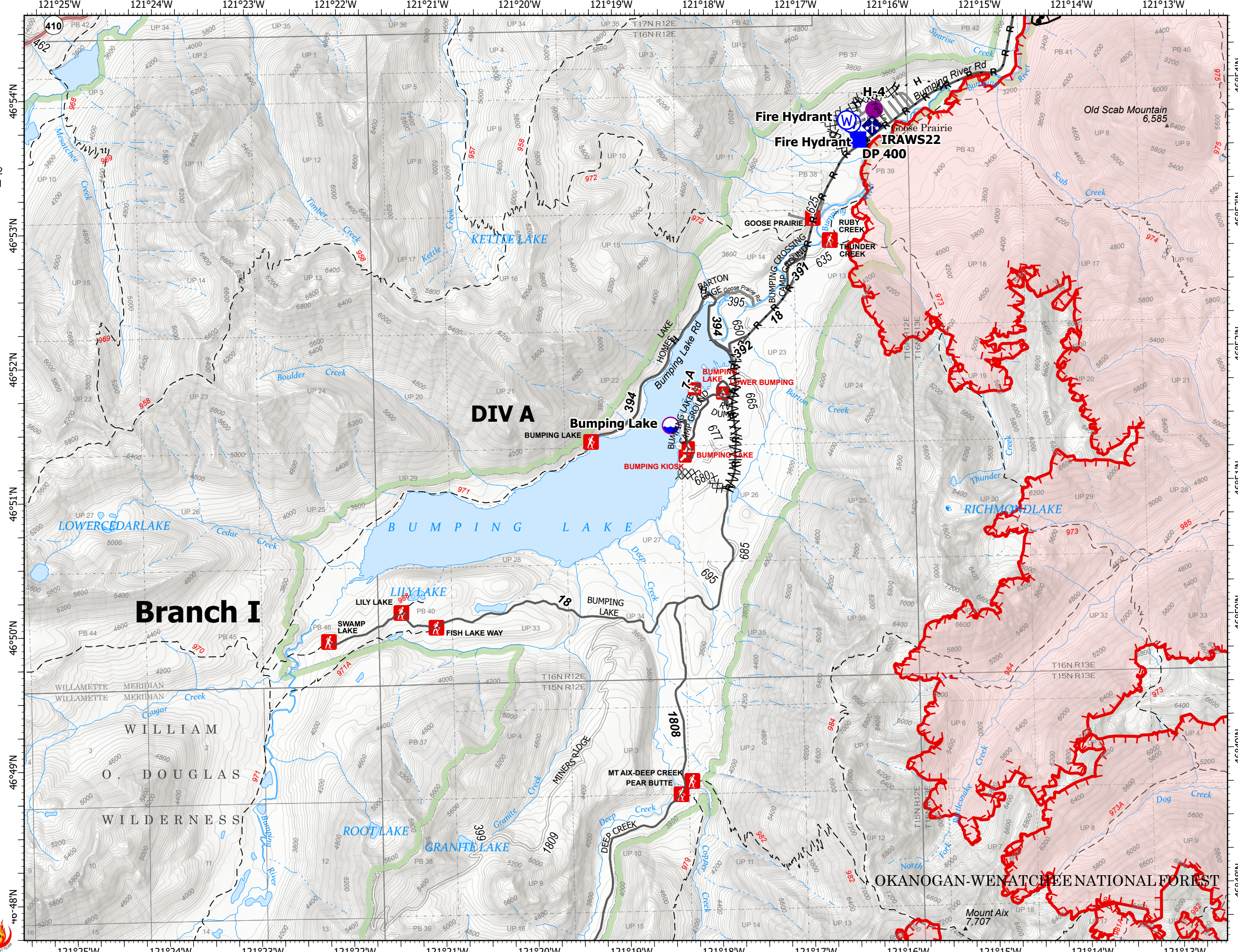
9/24/2021

105,523 acres at 9/21/2021 2105

Page 9 of 10



- Dip Site
- Helispot
- Drop Point
- Mobile Weather Unit
- Water Source
- Completed Burnout
- Completed Dozer Line
- Completed Fuel Break
- Completed Hand Line
- Completed Road as Line
- Planned Hand Line
- Fire Edge
- Contained Line
- Administrative FS Boundary
- FS Wilderness Boundary
- Wildfire Daily Fire Perimeter



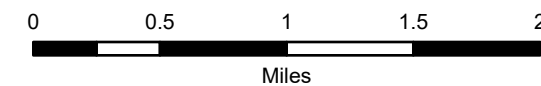
IAP Map

Schneider Springs
WA-OWF-000453

9/24/2021

105,523 acres at 9/21/2021 2105

Page 10 of 10



- Dip Site
- Helispot
- Division Break
- Drop Point
- Closure
- Staging Area
- Lookout
- Hot Spot - Spot Fire
- Value at Risk
- Other
- Bridge
- Mobile Weather Unit
- Water Source
- Completed Burnout
- Completed Dozer Line
- Completed Hand Line
- Completed Road as Line
- Planned Hand Line
- Planned Mixed Construction Line
- Planned Road as Line
- Fire Edge
- Contained Line
- Administrative FS Boundary
- FS Wilderness Boundary
- Wildfire Daily Fire Perimeter

