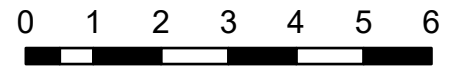


# IAP Map Index

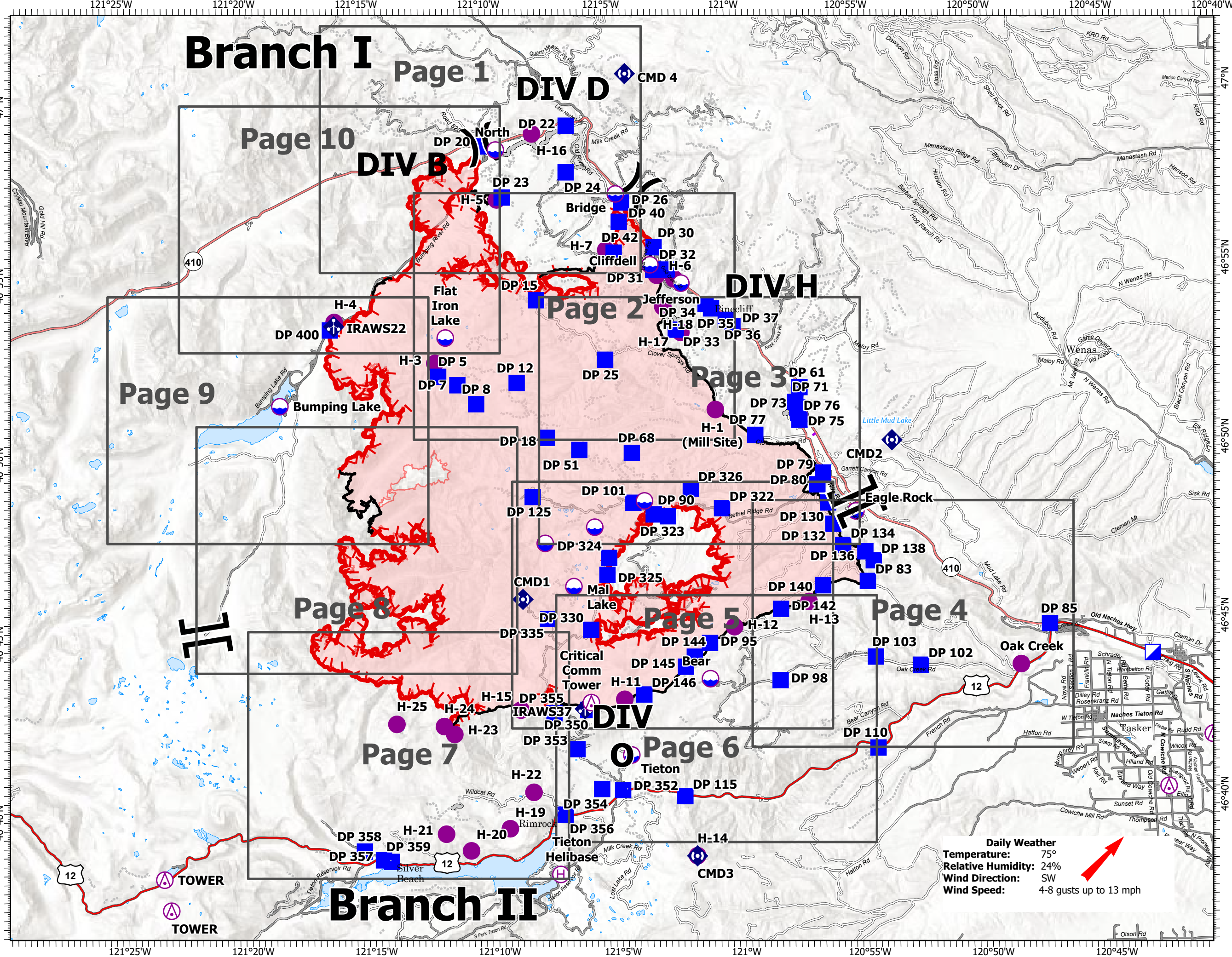
Schneider Springs  
WA-OWF-000453

9/25/2021

105,682 acres at 9/23/2021 2130



- Miles
- Aerial Hazard
- Dip Site
- Helispot
- Helibase
- Division Break
- Branch Break
- Incident Command Post
- Drop Point
- Mobile Weather Unit
- Repeater
- Access or Improved Road
- Aerial Hazard
- Fire Edge
- Contained Line
- Wildfire Daily Fire Perimeter
- Grid Index



NW 10  
9/24/2021 2016  
Acres from IR  
North American 1983 Datum.  
Lat/Long Grid



Daily Weather  
Temperature: 75°  
Relative Humidity: 24%  
Wind Direction: SW  
Wind Speed: 4-8 gusts up to 13 mph



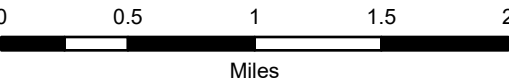
# IAP Map

Schneider Springs  
WA-OWF-000453

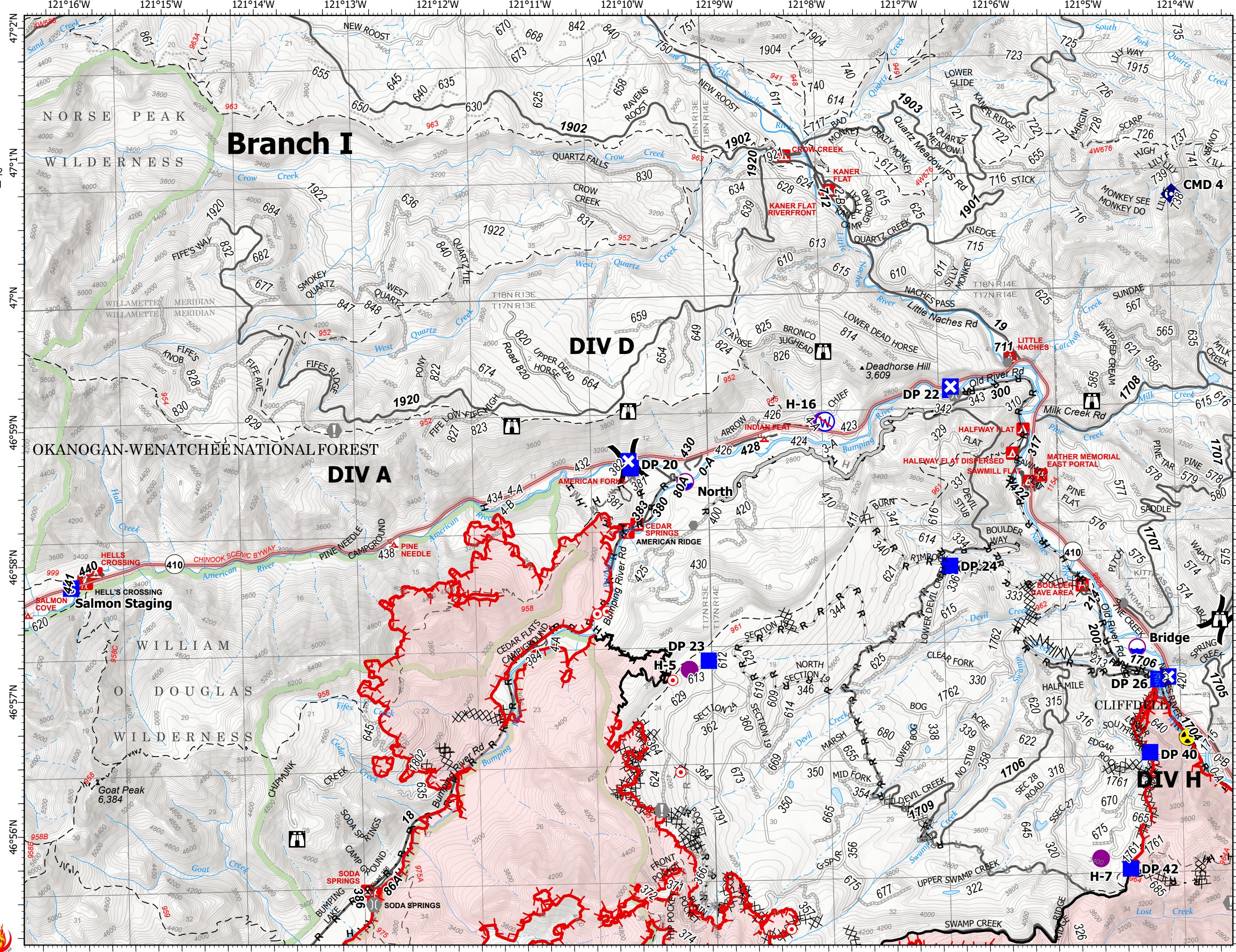
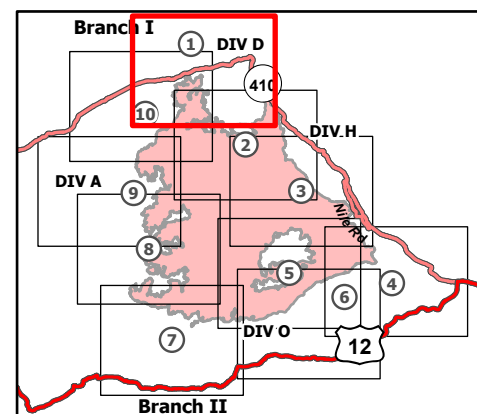
9/25/2021

105,682 acres at 9/23/2021 2130

Page 1 of 10



- Dip Site
- Helispot
- Division Break
- Drop Point
- Closure
- Staging Area
- Lookout
- Hot Spot - Spot Fire
- Value at Risk
- Other
- Bridge
- Repeater
- Hazard
- Restricted Water Source
- Completed Dozer Line
- Completed Fuel Break
- H - Completed Hand Line
- R - Completed Road as Line
- Planned Dozer Line
- H - Planned Hand Line
- M - Planned Mixed Construction Line
- R - Planned Road as Line
- Access or Improved Road
- Other
- Fire Edge
- Contained Line
- Administrative FS Boundary
- FS Wilderness Boundary
- Wildfire Daily Fire Perimeter





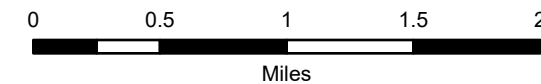
# IAP Map

Schneider Springs  
WA-OWF-000453

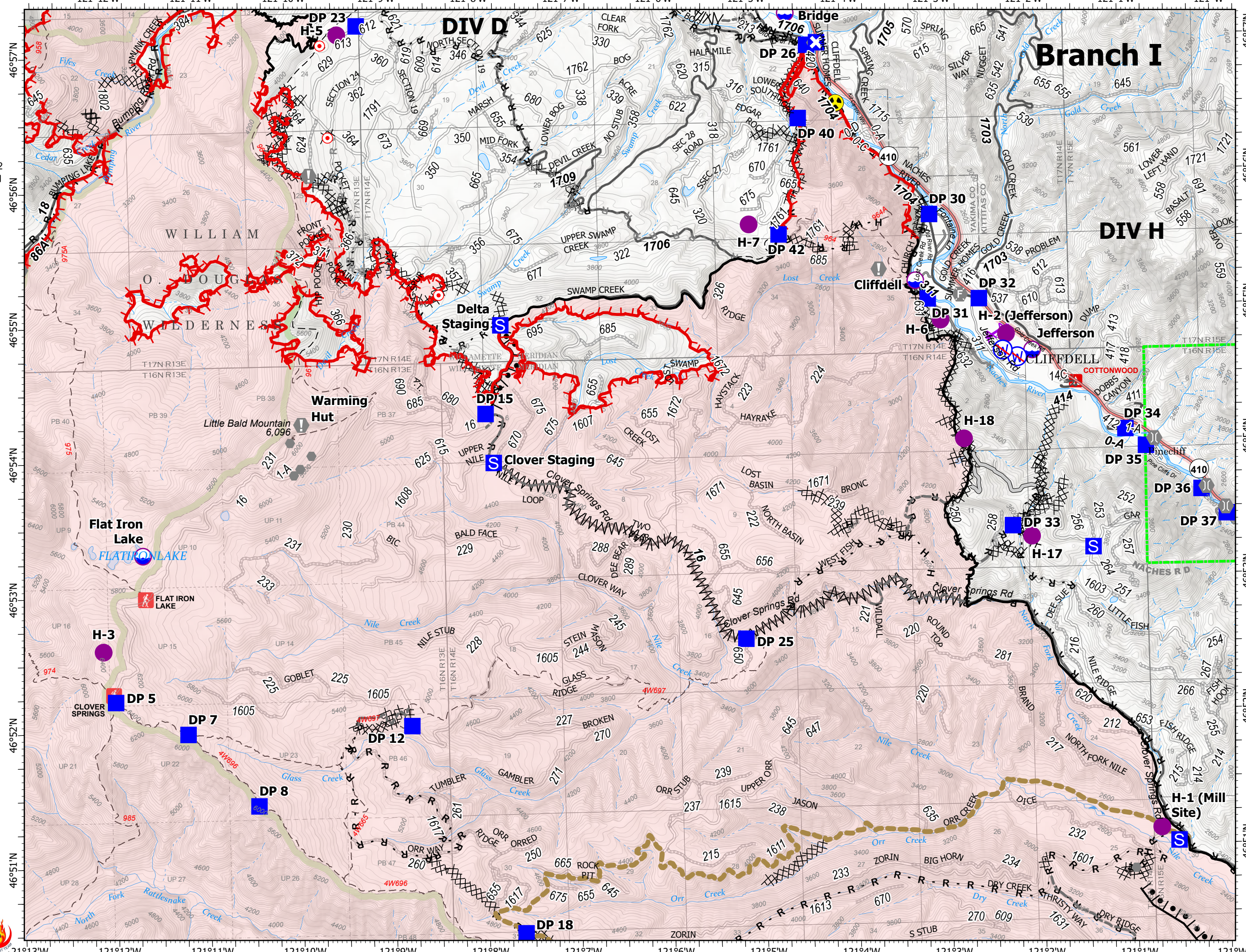
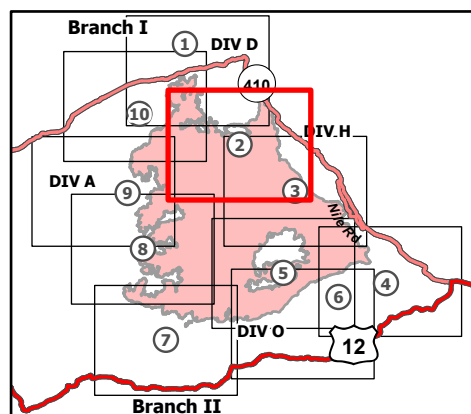
9/25/2021

105,682 acres at 9/23/2021 2130

Page 2 of 10



- Dip Site
- Helispot
- Division Break
- Drop Point
- Closure
- Staging Area
- Lookout
- Hot Spot - Spot Fire
- Value at Risk
- Other
- Fire Station
- Bridge
- Hazard
- Restricted Water Source
- Completed Burnout
- Completed Dozer Line
- Completed Fuel Break
- Completed Hand Line
- Completed Road as Line
- Planned Dozer Line
- Planned Hand Line
- Planned Road as Line
- Access or Improved Road
- Other
- Road Repair
- Aerial Hazard
- Fire Edge
- Contained Line
- Administrative FS Boundary
- FS Wilderness Boundary
- Wildfire Daily Fire Perimeter





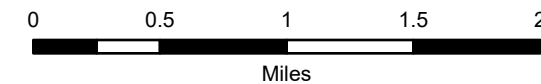
# IAP Map

Schneider Springs  
WA-OWF-000453

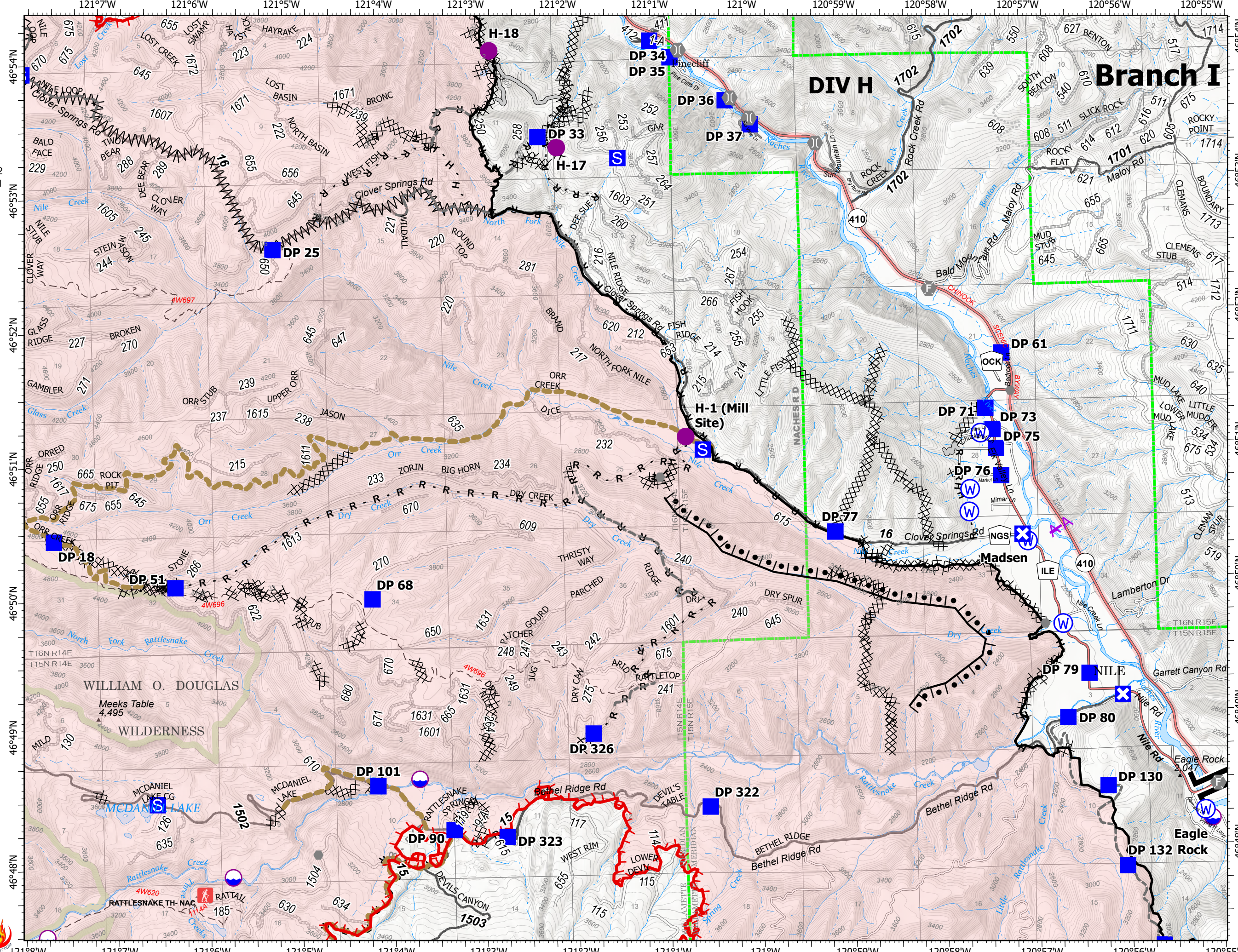
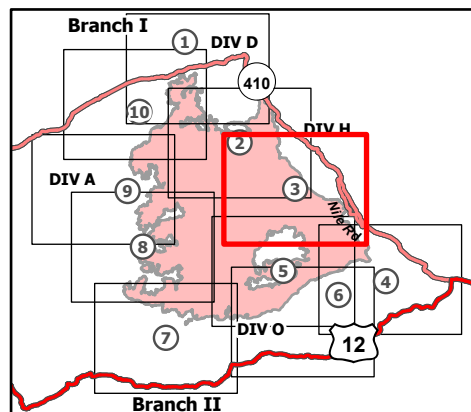
9/25/2021

105,682 acres at 9/23/2021 2130

Page 3 of 10



- Dip Site
- Helispot
- Branch Break
- Drop Point
- Closure
- Staging Area
- Other
- Fire Station
- Bridge
- Water Source
- Completed Burnout
- Completed Dozer Line
- Completed Fuel Break
- Completed Hand Line
- Completed Road as Line
- Planned Road as Line
- Access or Improved Road
- Other
- Road Repair
- Aerial Hazard
- Fire Edge
- Contained Line
- Administrative FS Boundary
- FS Wilderness Boundary
- Wildfire Daily Fire Perimeter





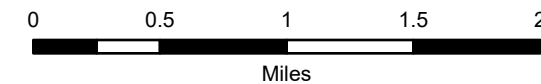
# IAP Map

Schneider Springs  
WA-OWF-000453

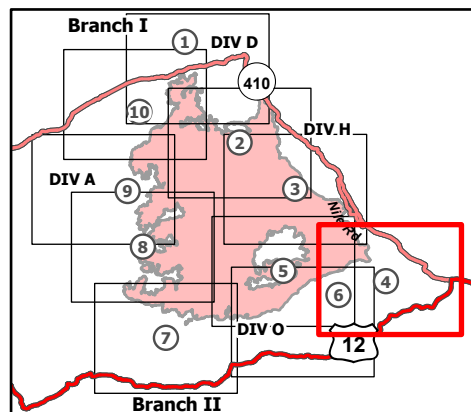
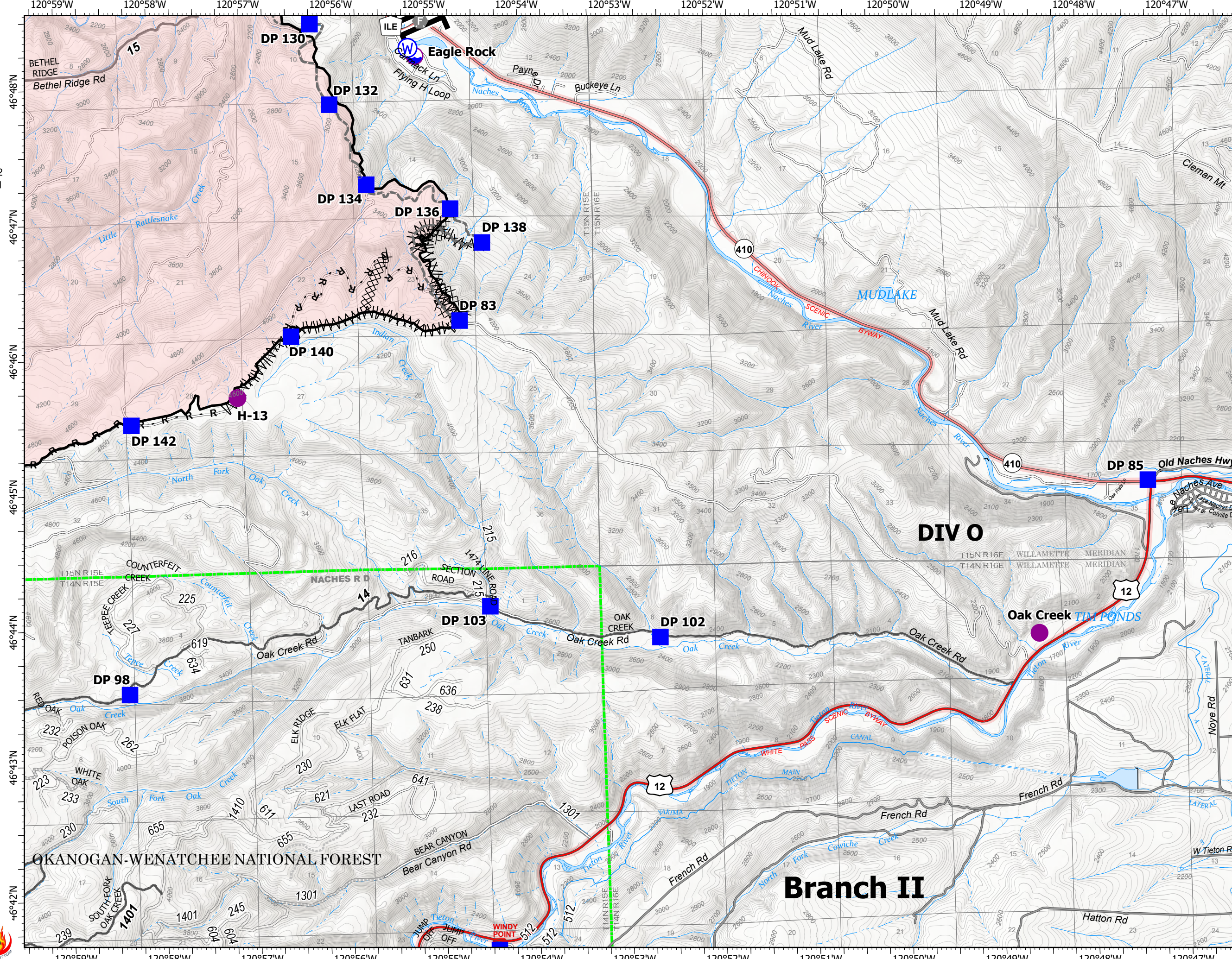
9/25/2021

105,682 acres at 9/23/2021 2130

Page 4 of 10



- Dip Site
- Helispot
- Branch Break
- Drop Point
- Fire Station
- Water Source
- Completed Dozer Line
- Completed Fuel Break
- Completed Road as Line
- Other
- Contained Line
- Administrative FS Boundary
- Wildfire Daily Fire Perimeter





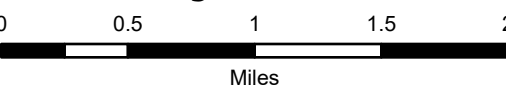
# IAP Map

Schneider Springs  
WA-OWF-000453

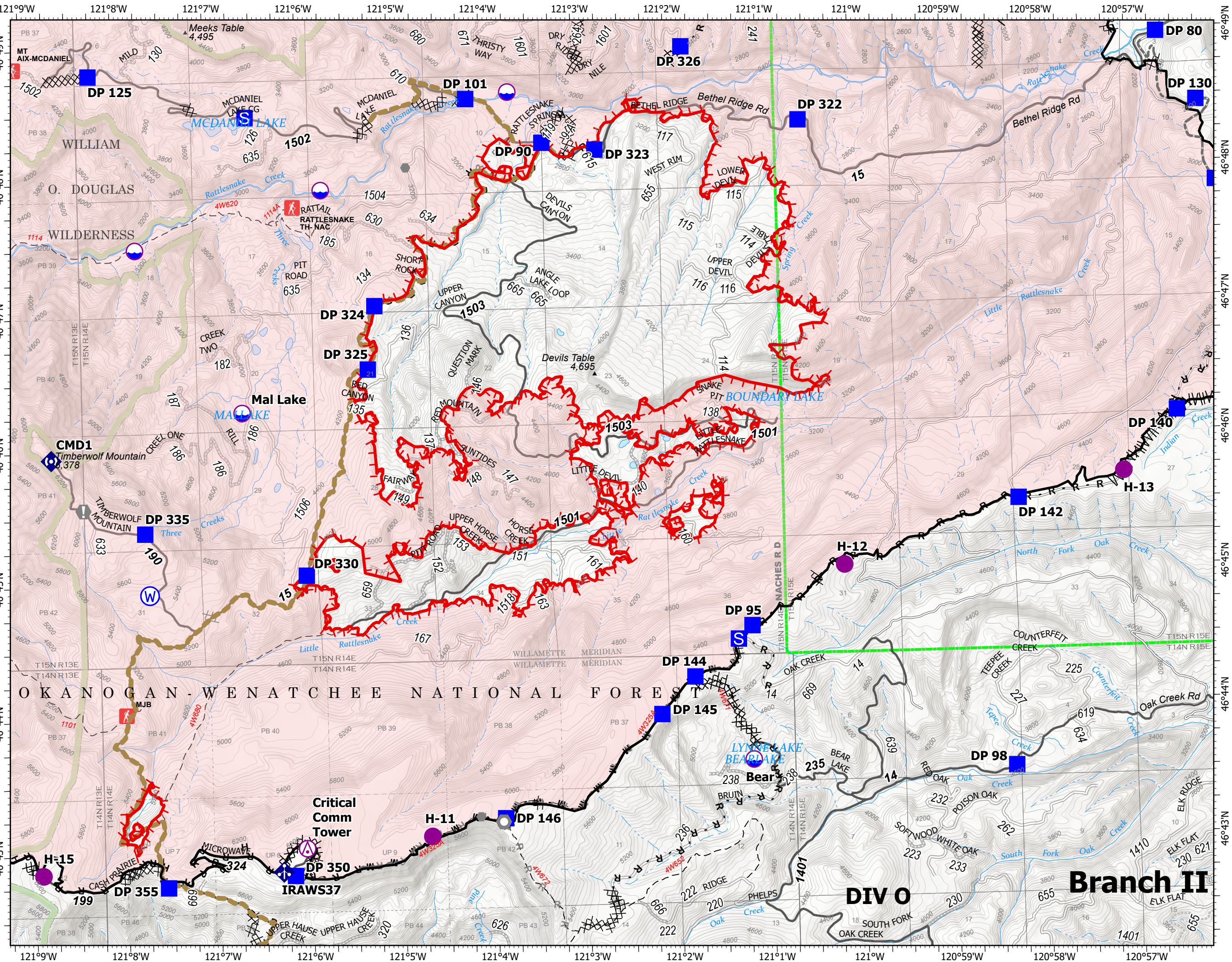
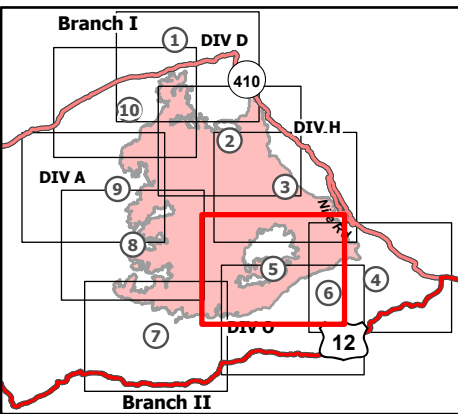
9/25/2021

105,682 acres at 9/23/2021 2130

Page 5 of 10



- Aerial Hazard
- Dip Site
- Helispot
- Drop Point
- Closure
- Staging Area
- Value at Risk
- Other
- Landmark
- Mobile Weather Unit
- Repeater
- Water Source
- Completed Burnout
- Completed Dozer Line
- Completed Fuel Break
- Completed Hand Line
- Completed Mixed Construction Line
- Completed Plow Line
- Completed Road as Line
- Planned Dozer Line
- Planned Road as Line
- Other
- Road Repair
- Fire Edge
- Contained Line
- Administrative FS Boundary
- FS Wilderness Boundary
- Wildfire Daily Fire Perimeter





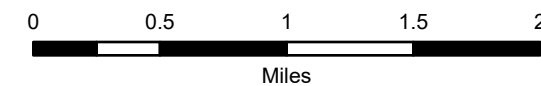
# IAP Map

Schneider Springs  
WA-OWF-000453

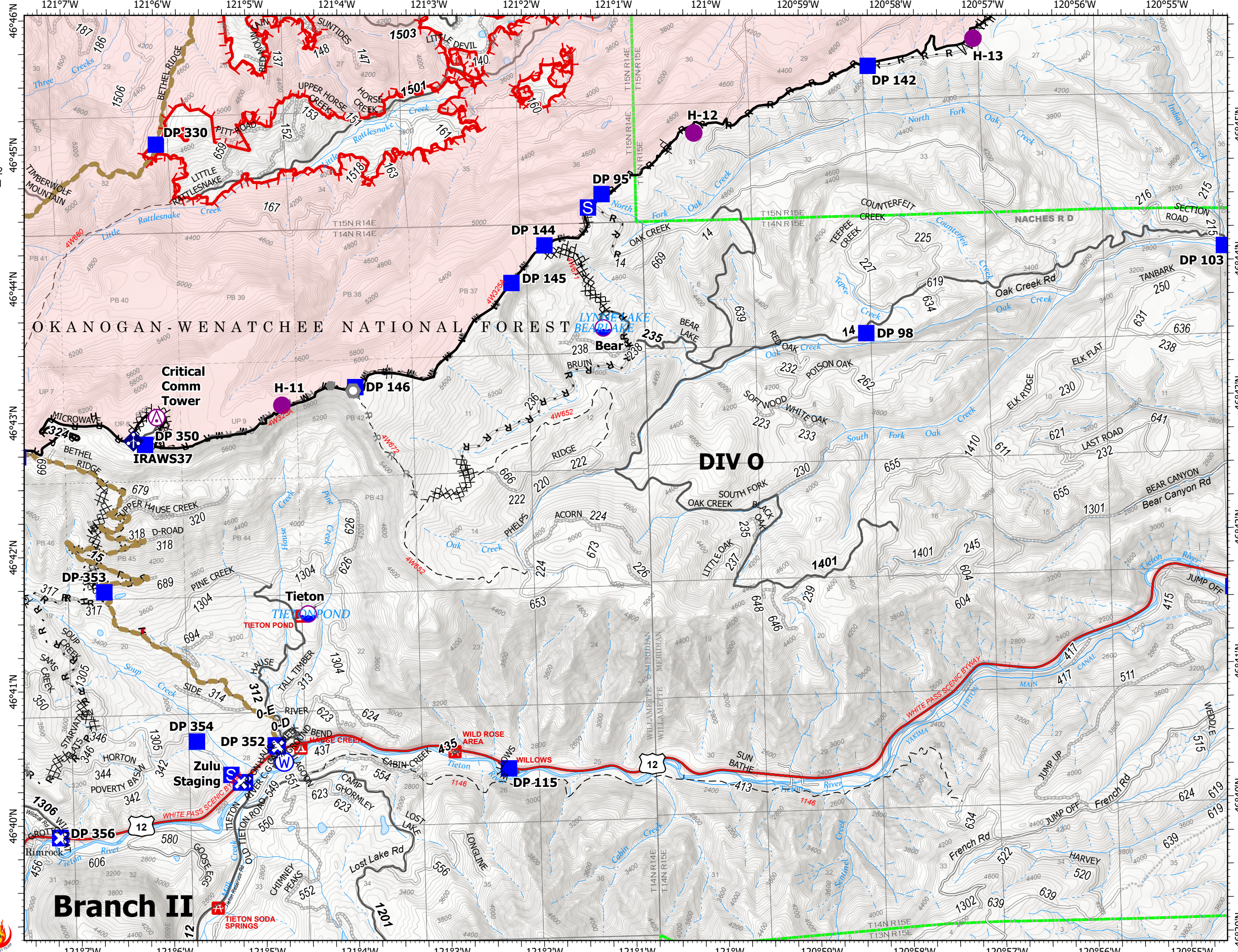
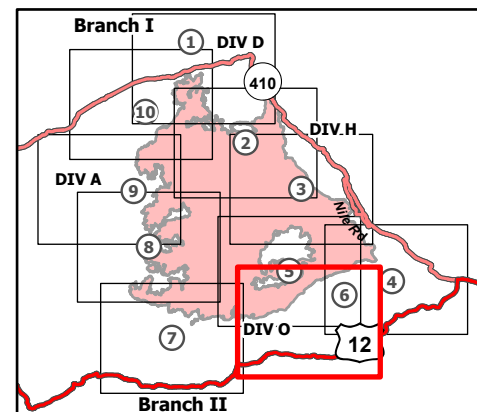
9/25/2021

105,682 acres at 9/23/2021 2130

Page 6 of 10



- ⊙ Aerial Hazard
- Dip Site
- Helispot
- Drop Point
- ⊠ Closure
- ⊠ Staging Area
- Other
- Landmark
- ⚡ Mobile Weather Unit
- ⊙ Water Source
- ⊠ Completed Dozer Line
- ⊠ Completed Fuel Break
- H Completed Hand Line
- M Completed Mixed Construction Line
- P Completed Plow Line
- R Completed Road as Line
- ⊠ Planned Dozer Line
- H Planned Hand Line
- R Planned Road as Line
- - - Fence
- - - Other
- Road Repair
- Fire Edge
- Contained Line
- Administrative FS Boundary
- Wildfire Daily Fire Perimeter





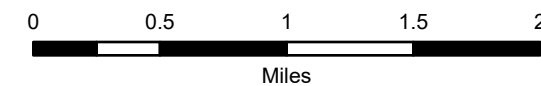
# IAP Map

Schneider Springs  
WA-OWF-000453

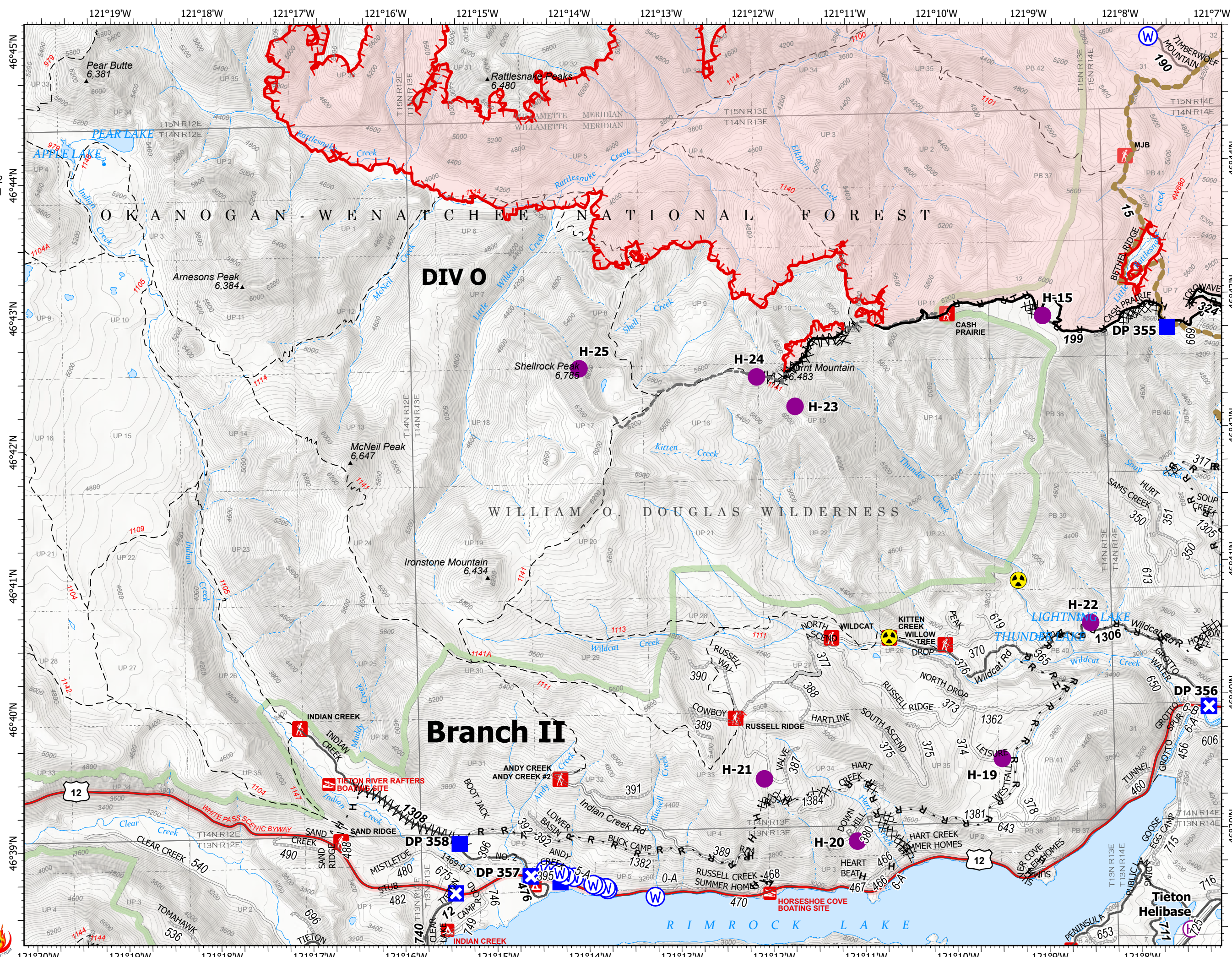
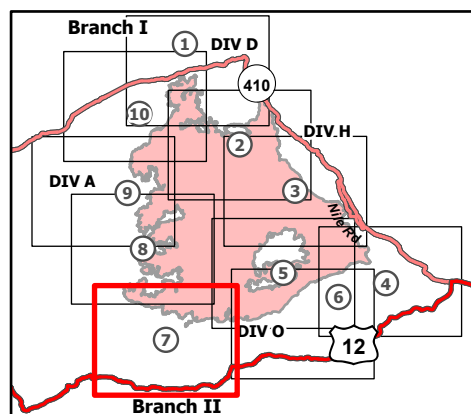
9/25/2021

105,682 acres at 9/23/2021 2130

Page 7 of 10



- Helispot
- H Helibase
- Drop Point
- X Closure
- ☠ Hazard
- W Water Source
- Completed Dozer Line
- Completed Fuel Break
- Completed Hand Line
- Completed Road as Line
- Planned Dozer Line
- Planned Road as Line
- Access or Improved Road
- Other
- Road Repair
- Fire Edge
- Contained Line
- Administrative FS Boundary
- FS Wilderness Boundary
- Wildfire Daily Fire Perimeter





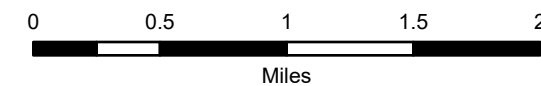
# IAP Map

Schneider Springs  
WA-OWF-000453

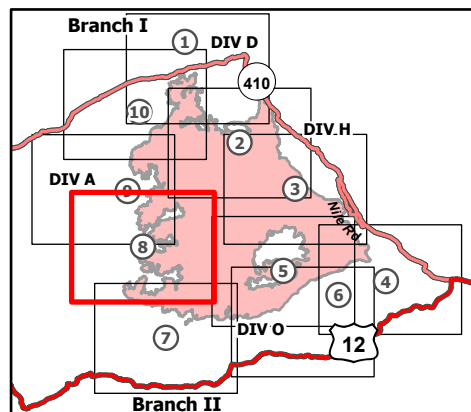
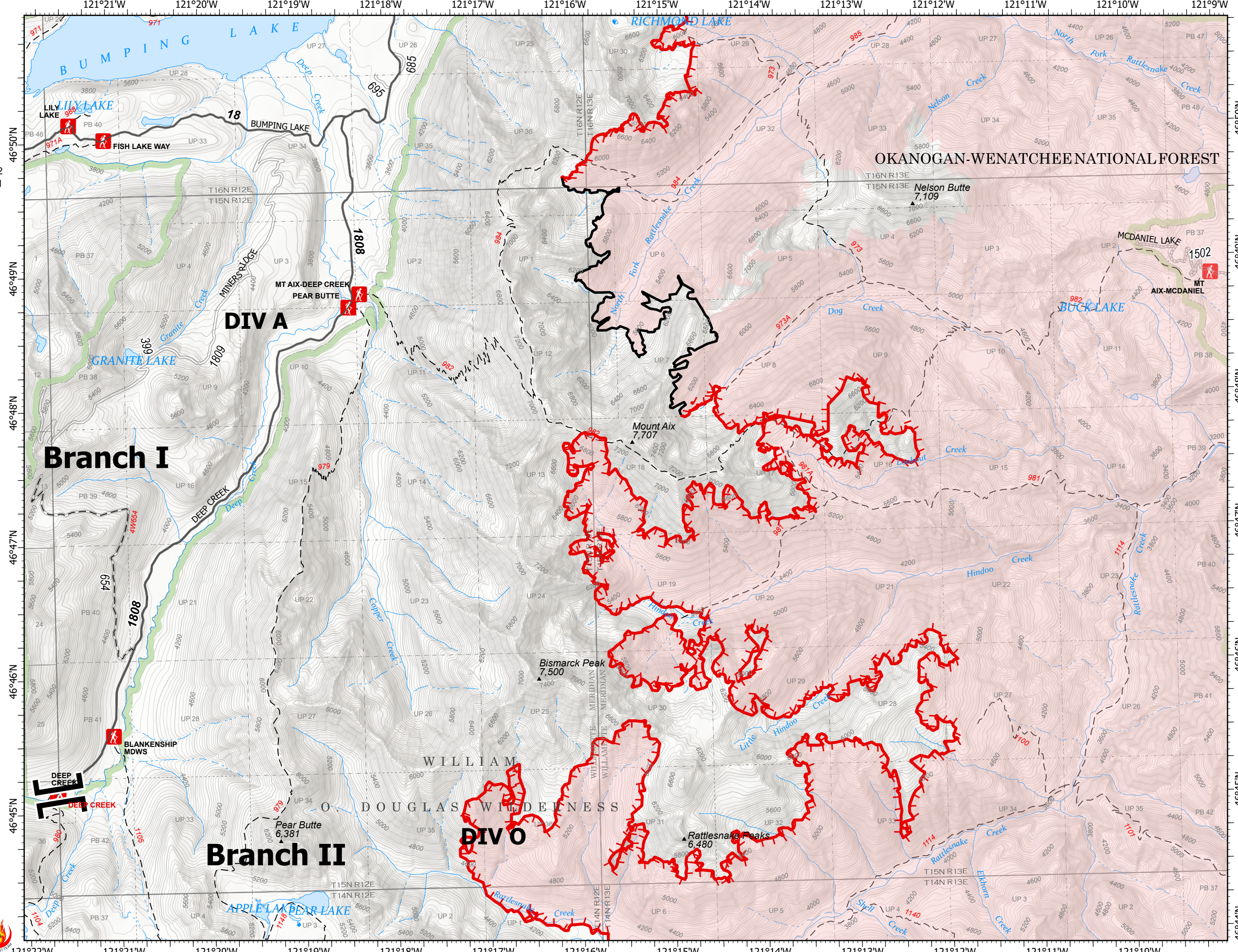
9/25/2021

105,682 acres at 9/23/2021 2130

Page 8 of 10



- Branch Break
- Repeater
- Completed Fuel Break
- Fire Edge
- Contained Line
- Administrative FS Boundary
- FS Wilderness Boundary
- Wildfire Daily Fire Perimeter





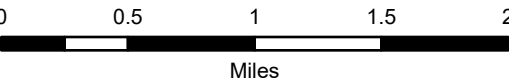
# IAP Map

Schneider Springs  
WA-OWF-000453

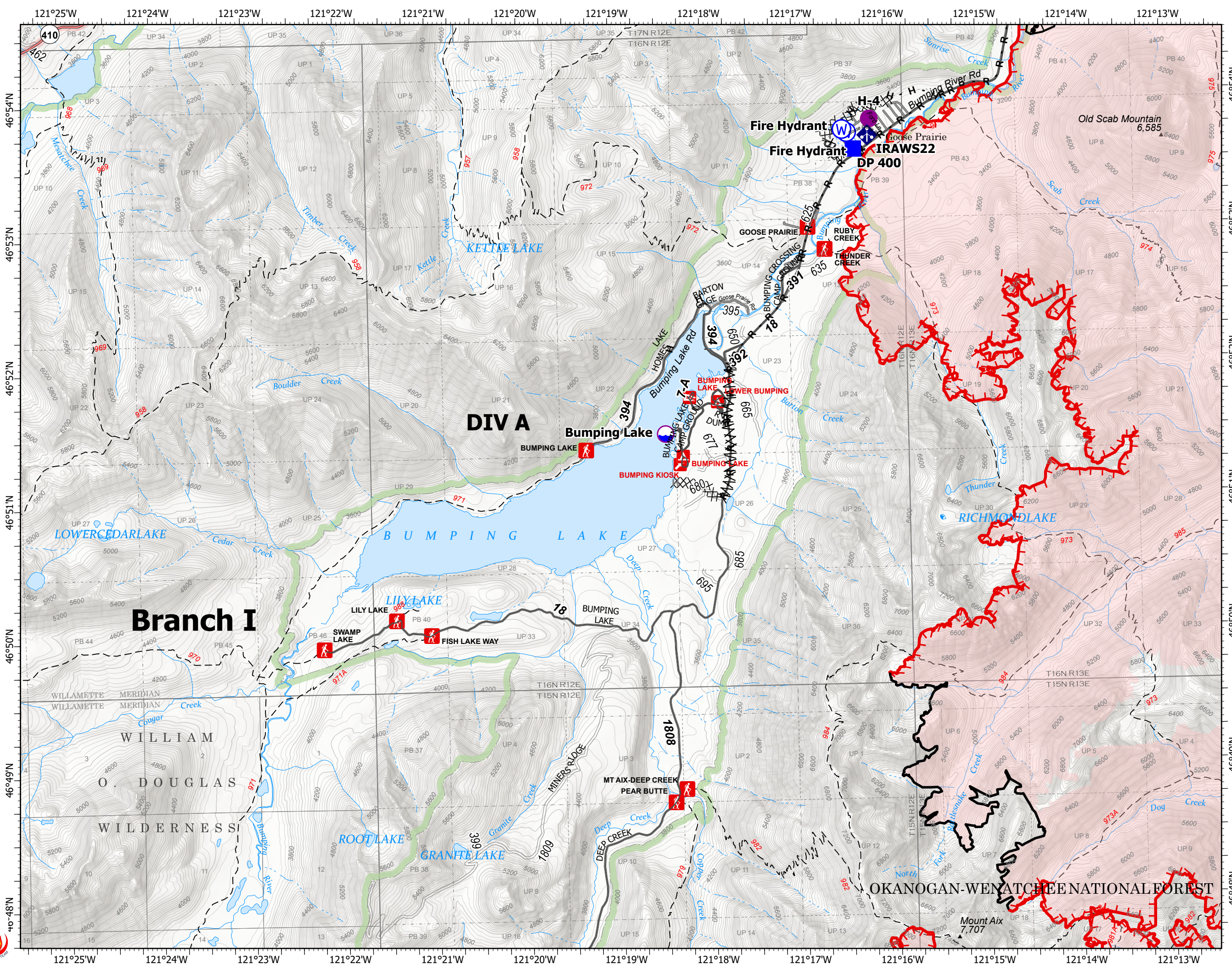
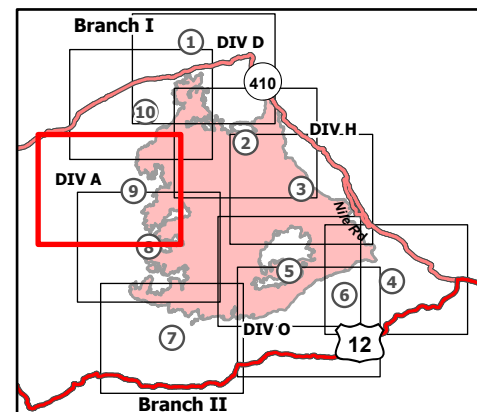
9/25/2021

105,682 acres at 9/23/2021 2130

Page 9 of 10



- Dip Site
- Helispot
- Drop Point
- Mobile Weather Unit
- Water Source
- Completed Burnout
- Completed Dozer Line
- Completed Fuel Break
- Completed Hand Line
- Completed Road as Line
- Planned Hand Line
- Fire Edge
- Contained Line
- Administrative FS Boundary
- FS Wilderness Boundary
- Wildfire Daily Fire Perimeter





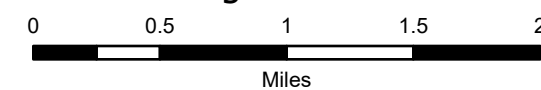
# IAP Map

Schneider Springs  
WA-OWF-000453

9/25/2021

105,682 acres at 9/23/2021 2130

Page 10 of 10



- Dip Site
- Helisport
- Division Break
- Drop Point
- Closure
- Staging Area
- Lookout
- Hot Spot - Spot Fire
- Value at Risk
- Other
- Bridge
- Mobile Weather Unit
- Water Source
- Completed Burnout
- Completed Dozer Line
- Completed Hand Line
- Completed Road as Line
- Planned Hand Line
- Planned Mixed Construction Line
- Planned Road as Line
- Fire Edge
- Contained Line
- Administrative FS Boundary
- FS Wilderness Boundary
- Wildfire Daily Fire Perimeter

