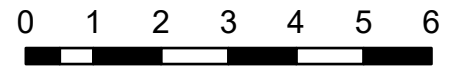


# IAP Map Index

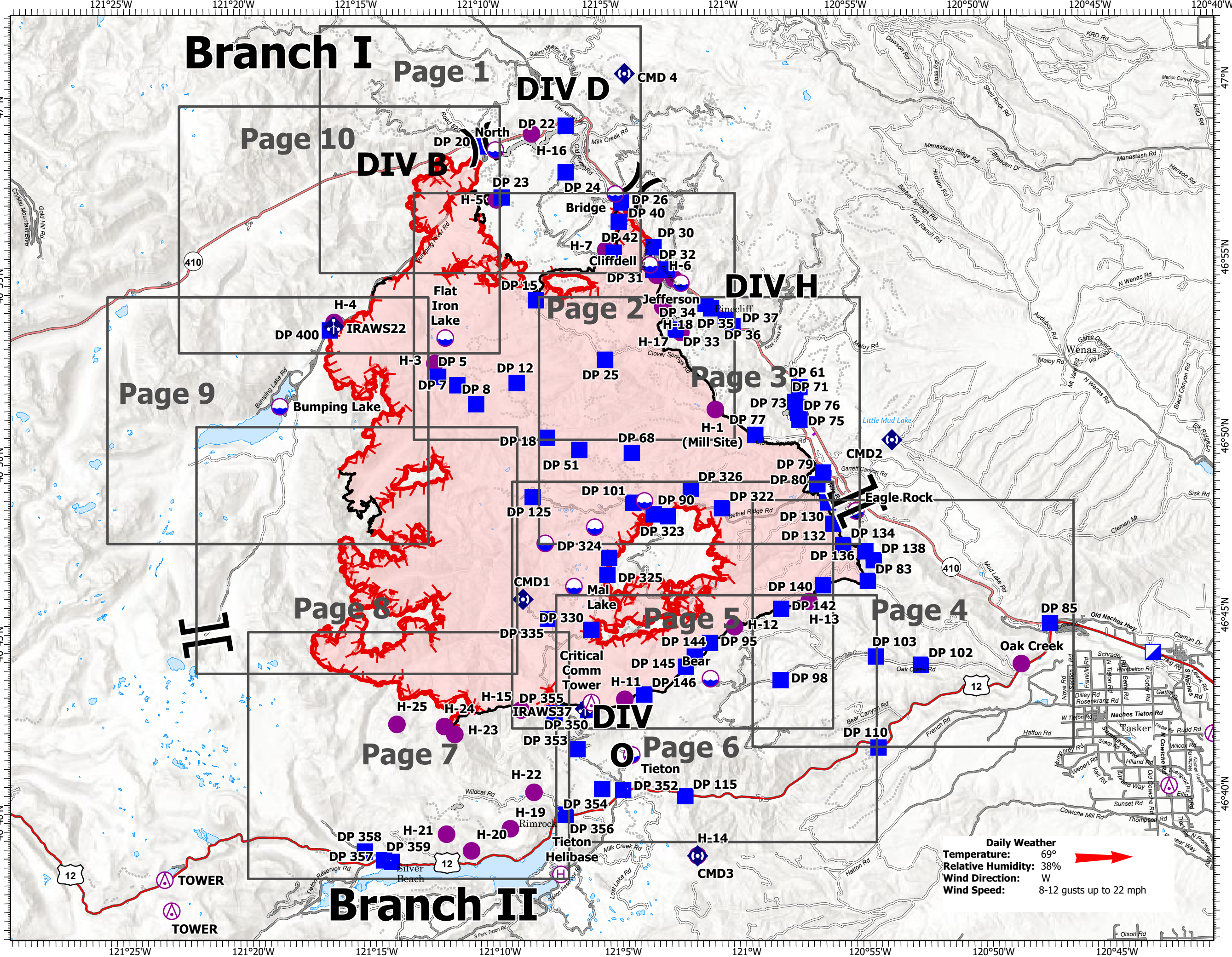
Schneider Springs  
WA-OWF-000453

9/26/2021

105,933 acres at 9/24/2021 2340



- Miles
- Aerial Hazard
- Dip Site
- Helispot
- Helibase
- Division Break
- Branch Break
- Incident Command Post
- Drop Point
- Mobile Weather Unit
- Repeater
- Access or Improved Road
- Aerial Hazard
- Fire Edge
- Contained Line
- Wildfire Daily Fire Perimeter
- Grid Index



**Daily Weather**  
 Temperature: 69°   
 Relative Humidity: 38%  
 Wind Direction: W  
 Wind Speed: 8-12 gusts up to 22 mph



NW 10  
9/25/2021 2015  
Acres from IR  
North American 1983 Datum.  
Lat/Long Grid



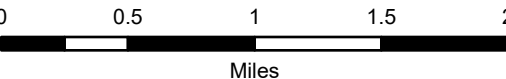
# IAP Map

Schneider Springs  
WA-OWF-000453

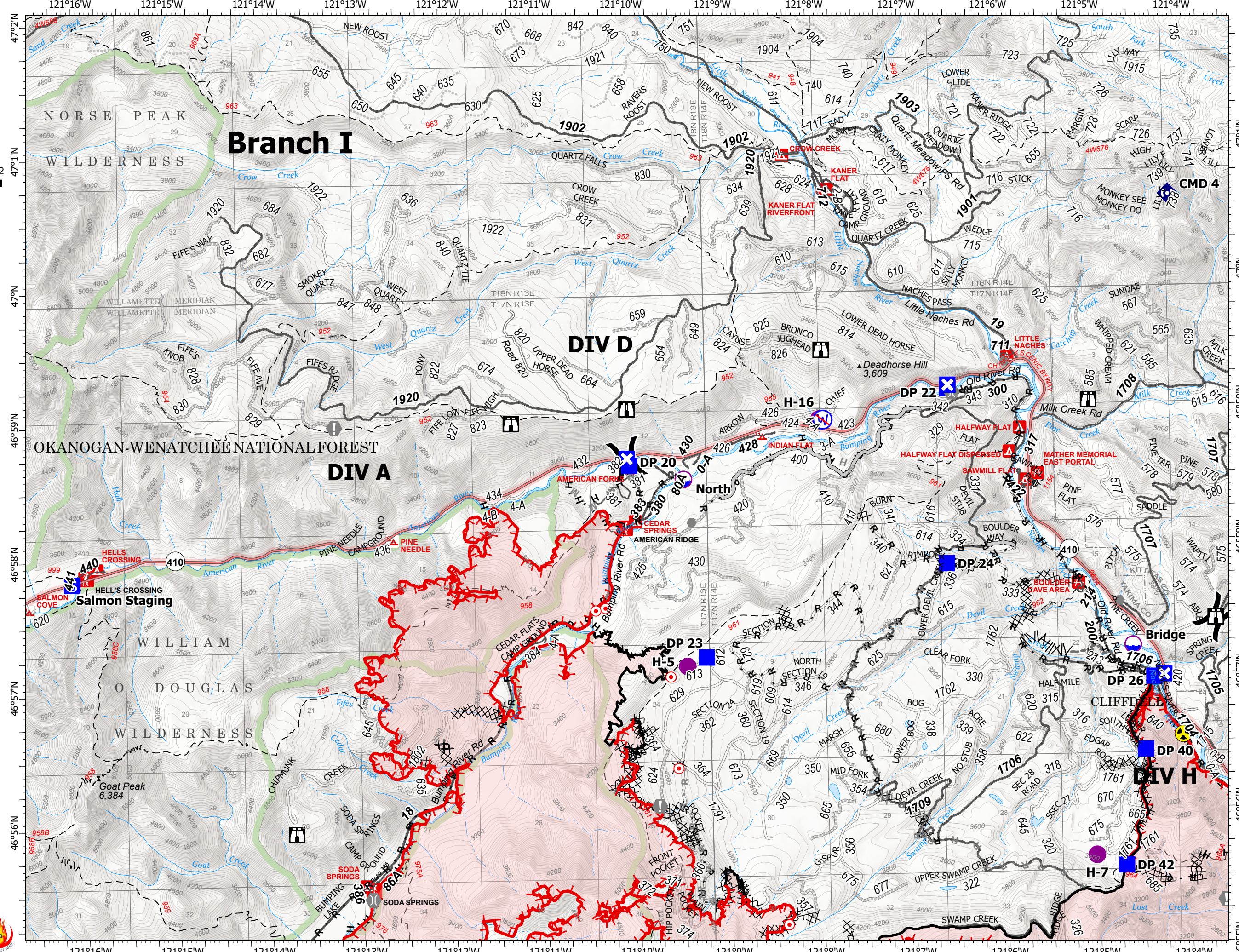
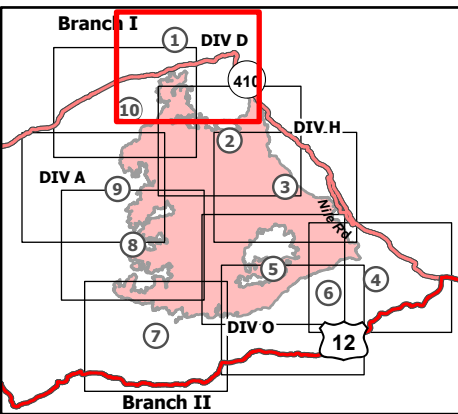
9/26/2021

105,933 acres at 9/24/2021 2340

Page 1 of 10



- Dip Site
- Helispot
- Division Break
- Drop Point
- Closure
- Staging Area
- Lookout
- Hot Spot - Spot Fire
- Value at Risk
- Other
- Bridge
- Repeater
- Hazard
- Restricted Water Source
- Completed Dozer Line
- Completed Fuel Break
- H - Completed Hand Line
- R - Completed Road as Line
- Planned Dozer Line
- H - Planned Hand Line
- M - Planned Mixed Construction Line
- R - Planned Road as Line
- Access or Improved Road
- Other
- Fire Edge
- Contained Line
- Administrative FS Boundary
- FS Wilderness Boundary
- Wildfire Daily Fire Perimeter



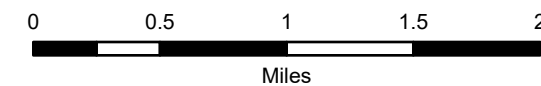
# IAP Map

Schneider Springs  
WA-OWF-000453

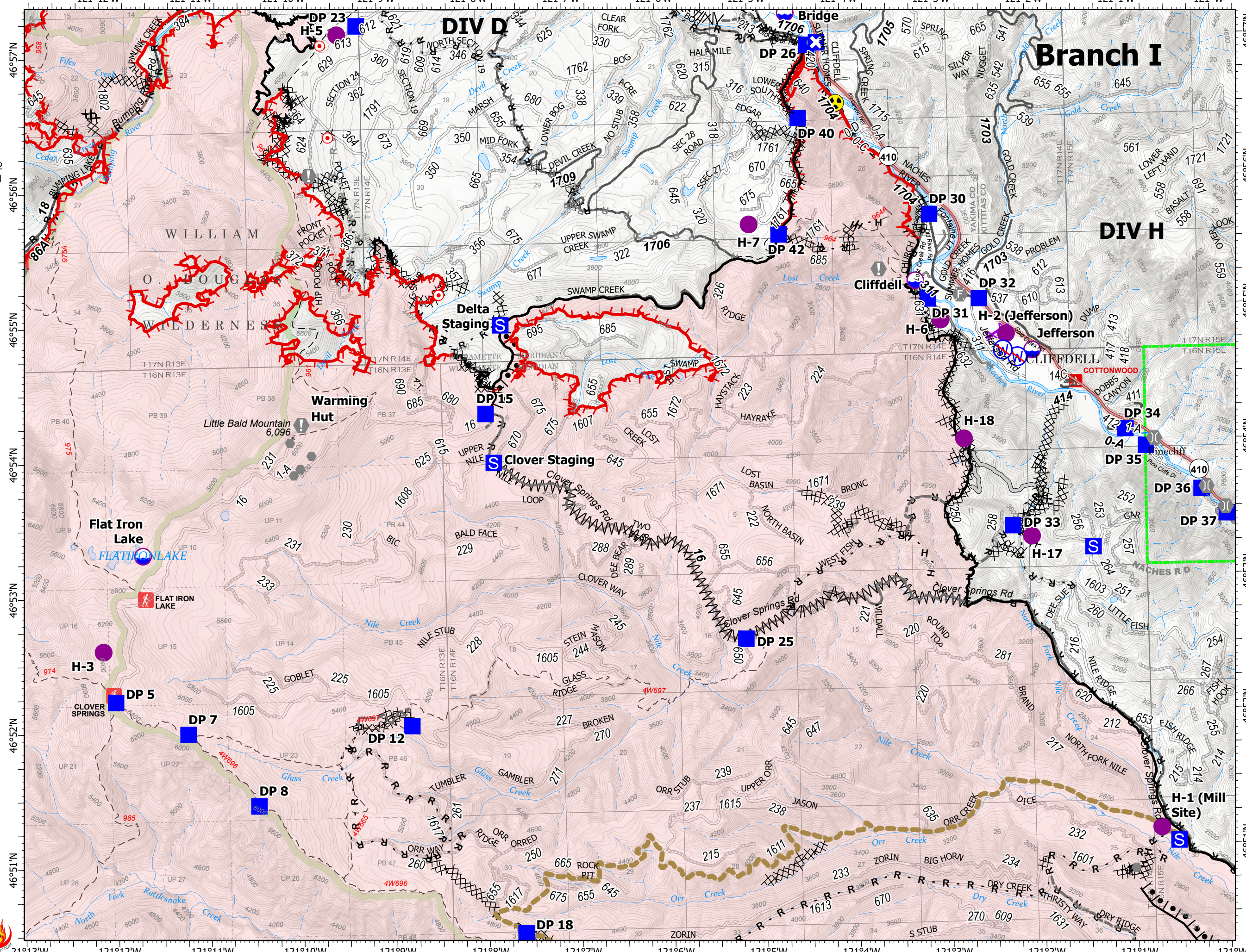
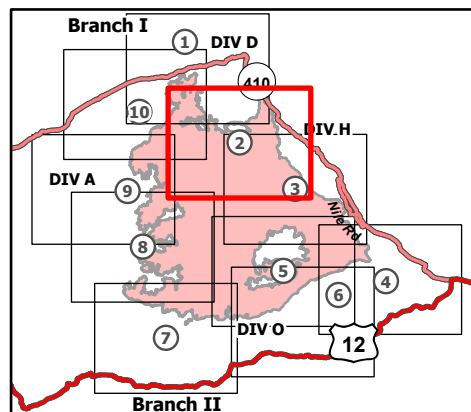
9/26/2021

105,933 acres at 9/24/2021 2340

Page 2 of 10



- Dip Site
- Helispot
- Division Break
- Drop Point
- Closure
- Staging Area
- Lookout
- Hot Spot - Spot Fire
- Value at Risk
- Other
- Fire Station
- Bridge
- Hazard
- Restricted Water Source
- Completed Burnout
- Completed Dozer Line
- Completed Fuel Break
- Completed Hand Line
- Completed Road as Line
- Planned Dozer Line
- Planned Hand Line
- Planned Road as Line
- Access or Improved Road
- Other
- Road Repair
- Aerial Hazard
- Fire Edge
- Contained Line
- Administrative FS Boundary
- FS Wilderness Boundary
- Wildfire Daily Fire Perimeter



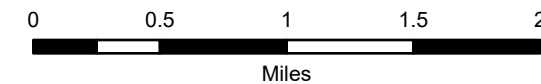
# IAP Map

Schneider Springs  
WA-OWF-000453

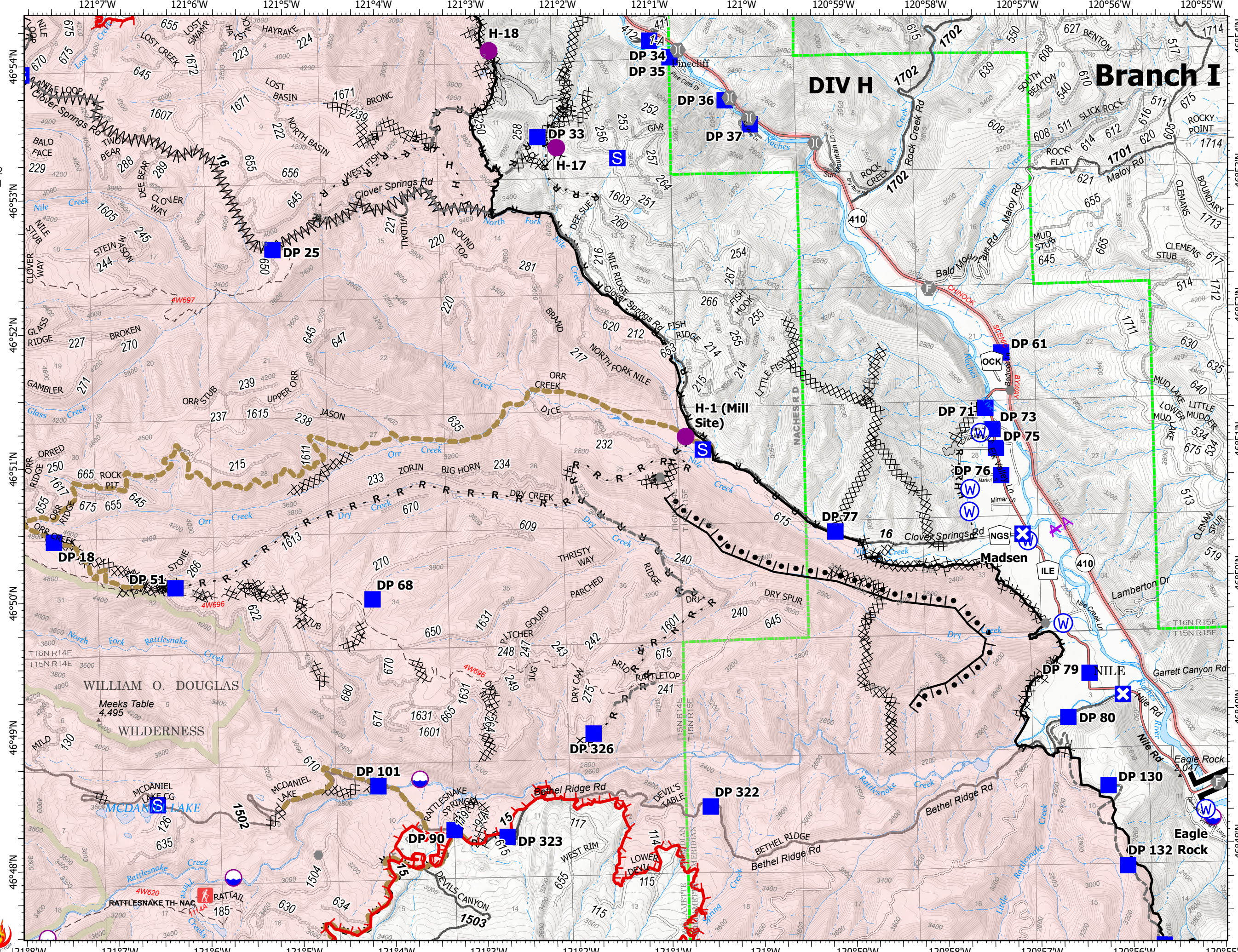
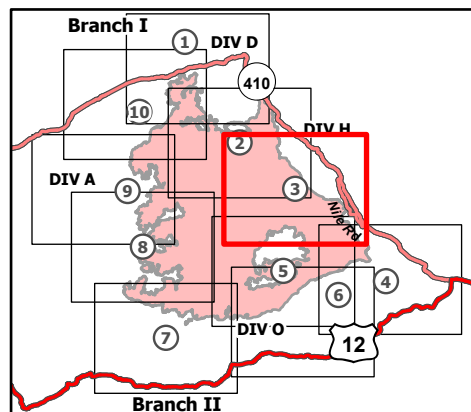
9/26/2021

105,933 acres at 9/24/2021 2340

Page 3 of 10



- Dip Site
- Helispot
- Branch Break
- Drop Point
- Closure
- Staging Area
- Other
- Fire Station
- Bridge
- Water Source
- Completed Burnout
- Completed Dozer Line
- Completed Fuel Break
- Completed Hand Line
- Completed Road as Line
- Planned Road as Line
- Access or Improved Road
- Other
- Road Repair
- Aerial Hazard
- Fire Edge
- Contained Line
- Administrative FS Boundary
- FS Wilderness Boundary
- Wildfire Daily Fire Perimeter



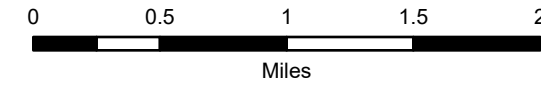
# IAP Map

Schneider Springs  
WA-OWF-000453

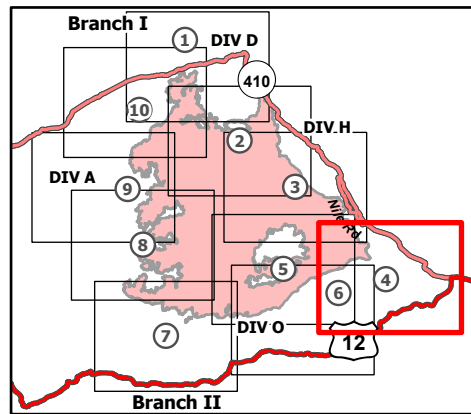
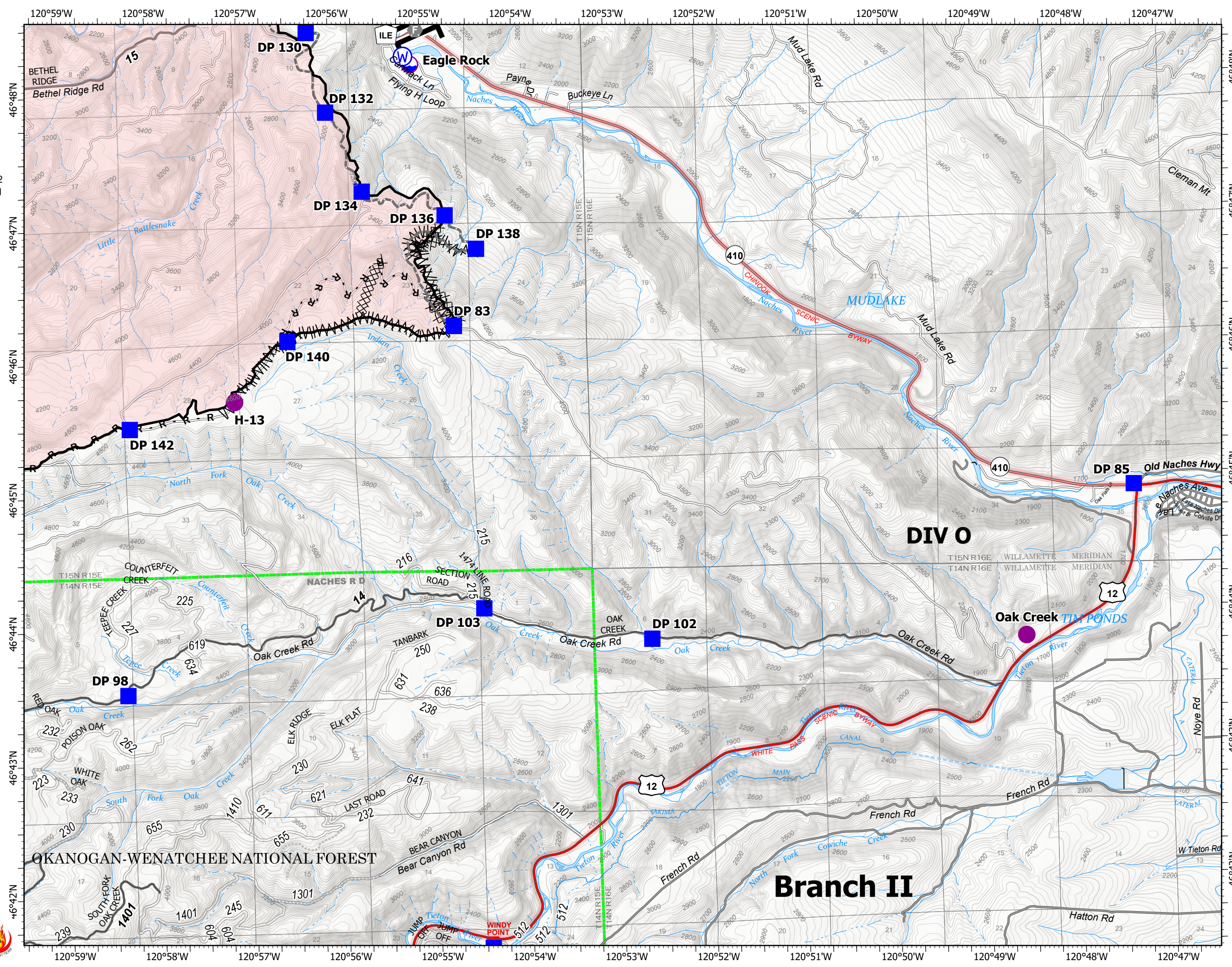
9/26/2021

105,933 acres at 9/24/2021 2340

Page 4 of 10



- Dip Site
- Helispot
- Branch Break
- Drop Point
- Fire Station
- Water Source
- Completed Dozer Line
- Completed Fuel Break
- Completed Road as Line
- Other
- Contained Line
- Administrative FS Boundary
- Wildfire Daily Fire Perimeter



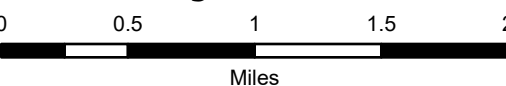
# IAP Map

Schneider Springs  
WA-OWF-000453

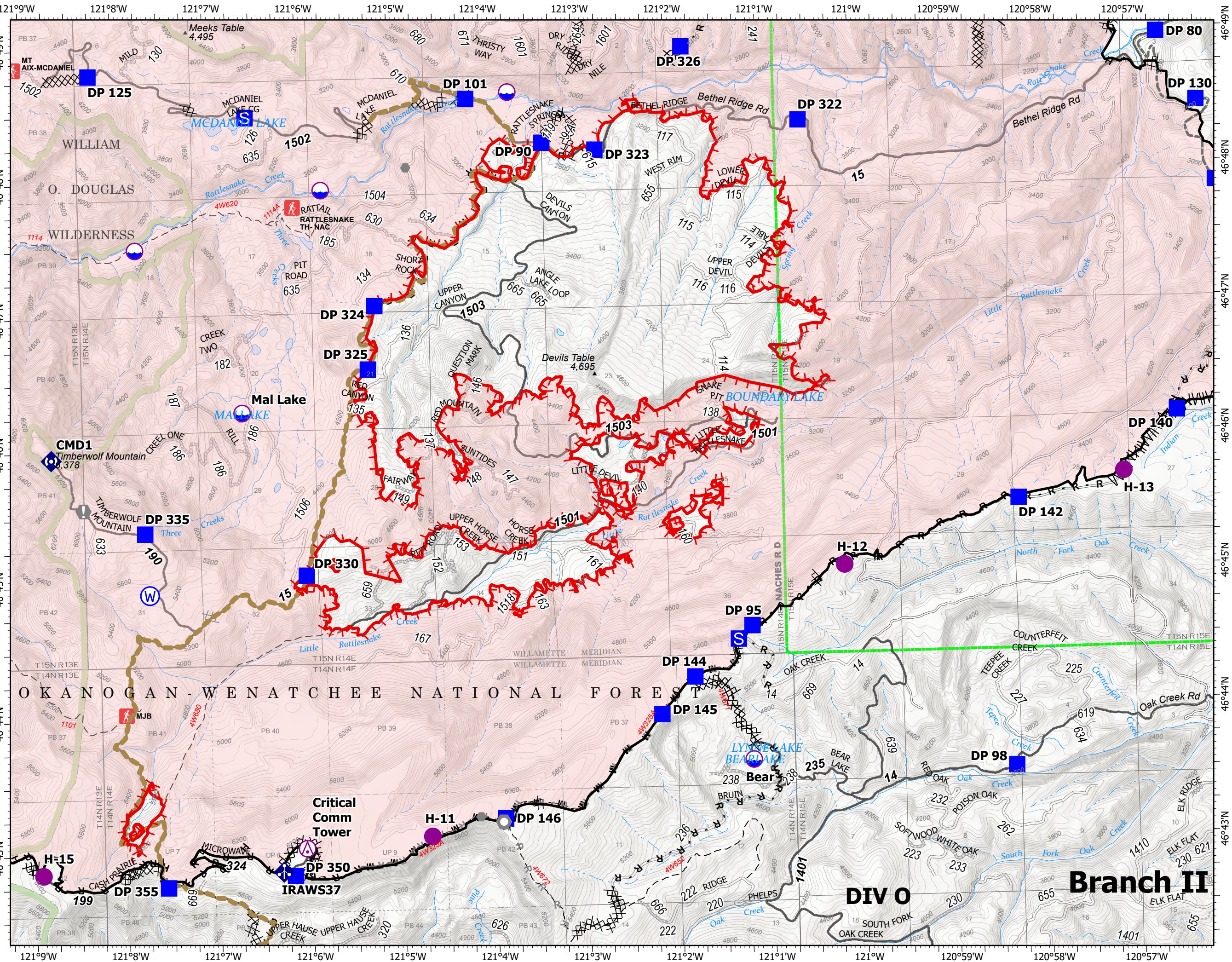
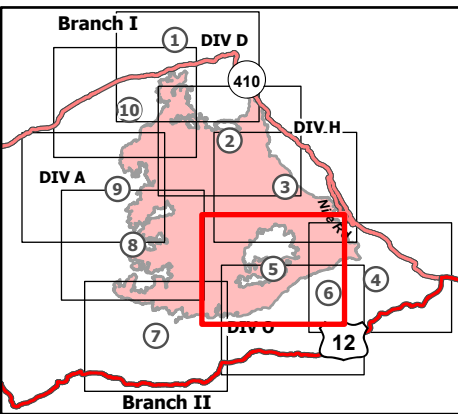
9/26/2021

105,933 acres at 9/24/2021 2340

Page 5 of 10



- ⊗ Aerial Hazard
- ⊙ Dip Site
- ⊙ Helispot
- Drop Point
- ⊠ Closure
- ⊠ Staging Area
- ⊙ Value at Risk
- Other
- Landmark
- ⊠ Mobile Weather Unit
- ⊠ Repeater
- ⊙ Water Source
- ⊠ Completed Burnout
- ⊠ Completed Dozer Line
- ⊠ Completed Fuel Break
- H Completed Hand Line
- M Completed Mixed Construction Line
- P Completed Plow Line
- R Completed Road as Line
- ⊠ Planned Dozer Line
- R Planned Road as Line
- Other
- Road Repair
- Fire Edge
- Contained Line
- Administrative FS Boundary
- FS Wilderness Boundary
- Wildfire Daily Fire Perimeter



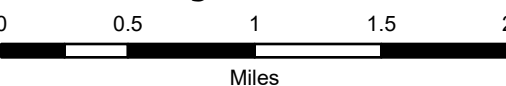
# IAP Map

Schneider Springs  
WA-OWF-000453

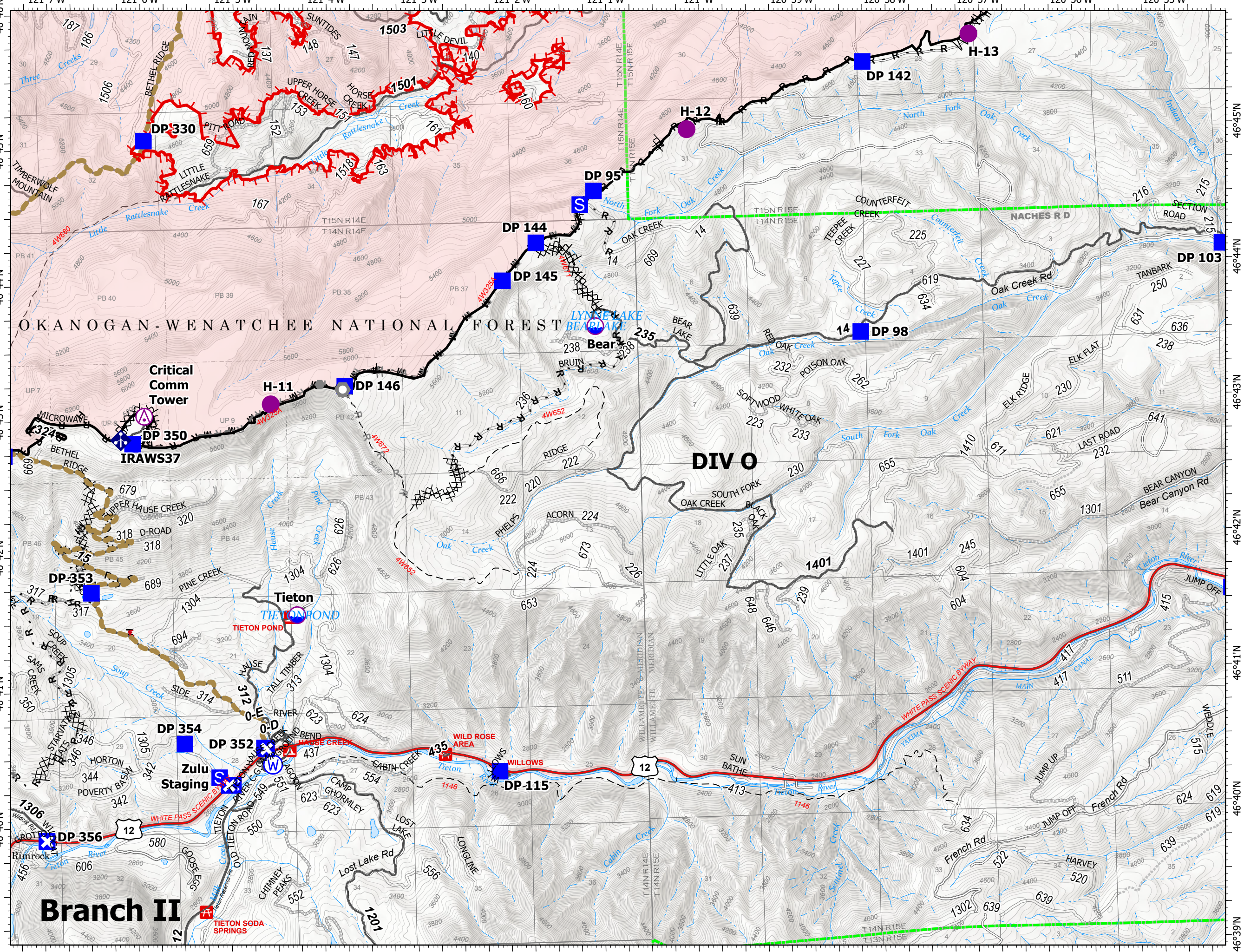
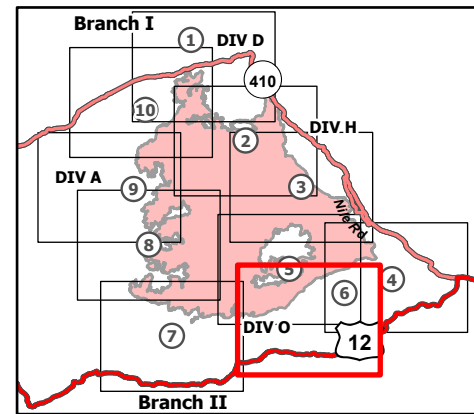
9/26/2021

105,933 acres at 9/24/2021 2340

Page 6 of 10



- Aerial Hazard
- Dip Site
- Helispot
- Drop Point
- Closure
- Staging Area
- Other
- Landmark
- Mobile Weather Unit
- Water Source
- Completed Dozer Line
- Completed Fuel Break
- Completed Hand Line
- Completed Mixed Construction Line
- Completed Plow Line
- Completed Road as Line
- Planned Dozer Line
- Planned Hand Line
- Planned Road as Line
- Fence
- Other
- Road Repair
- Fire Edge
- Contained Line
- Administrative FS Boundary
- Wildfire Daily Fire Perimeter



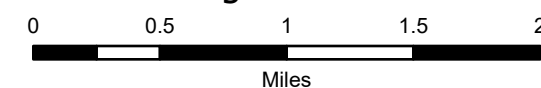
# IAP Map

Schneider Springs  
WA-OWF-000453

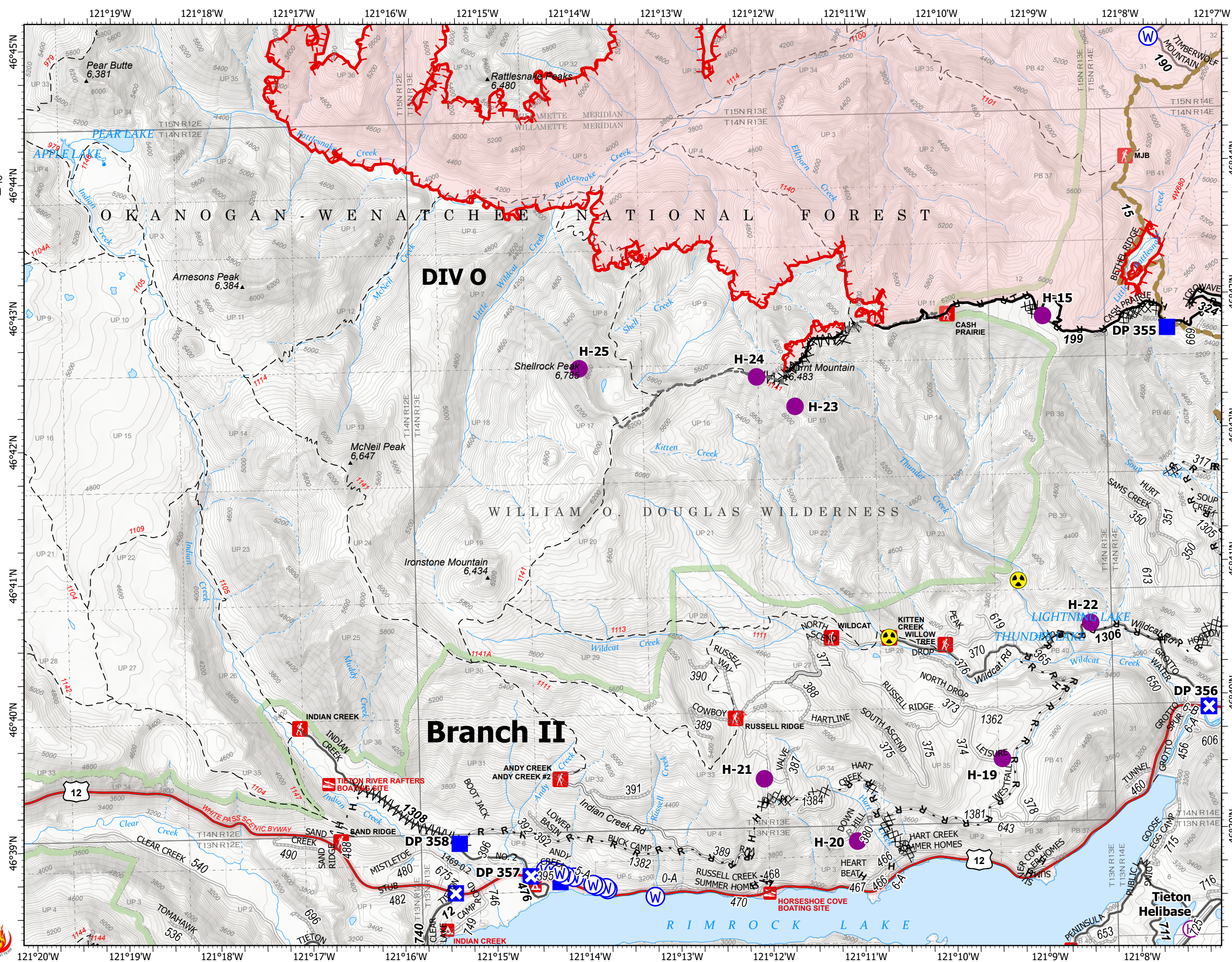
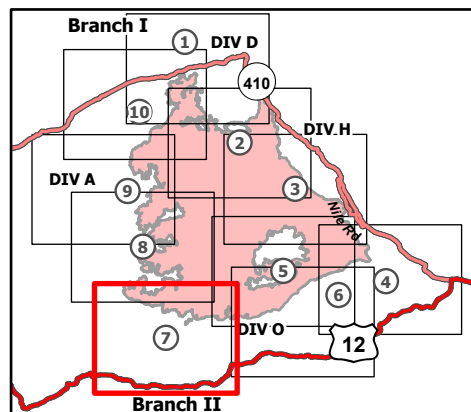
9/26/2021

105,933 acres at 9/24/2021 2340

Page 7 of 10



- Helispot
- ⊕ Helibase
- Drop Point
- ⊠ Closure
- ⚠ Hazard
- Ⓜ Water Source
- ⊗⊗ Completed Dozer Line
- ⊗⊗ Completed Fuel Break
- H - Completed Hand Line
- R - Completed Road as Line
- ⊗⊗ Planned Dozer Line
- R - Planned Road as Line
- Access or Improved Road
- - - Other
- Road Repair
- ▬ Fire Edge
- ▬ Contained Line
- ▬ Administrative FS Boundary
- ▬ FS Wilderness Boundary
- ▬ Wildfire Daily Fire Perimeter





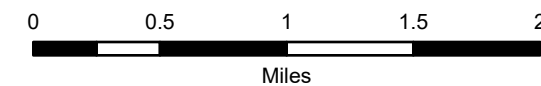
# IAP Map

Schneider Springs  
WA-OWF-000453

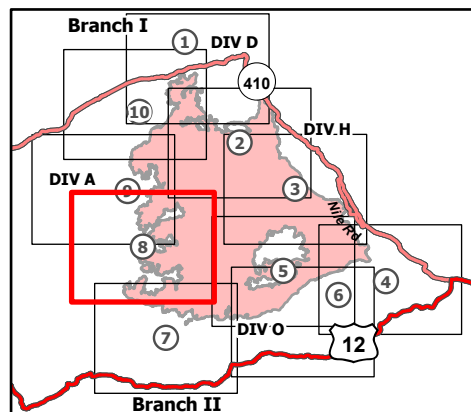
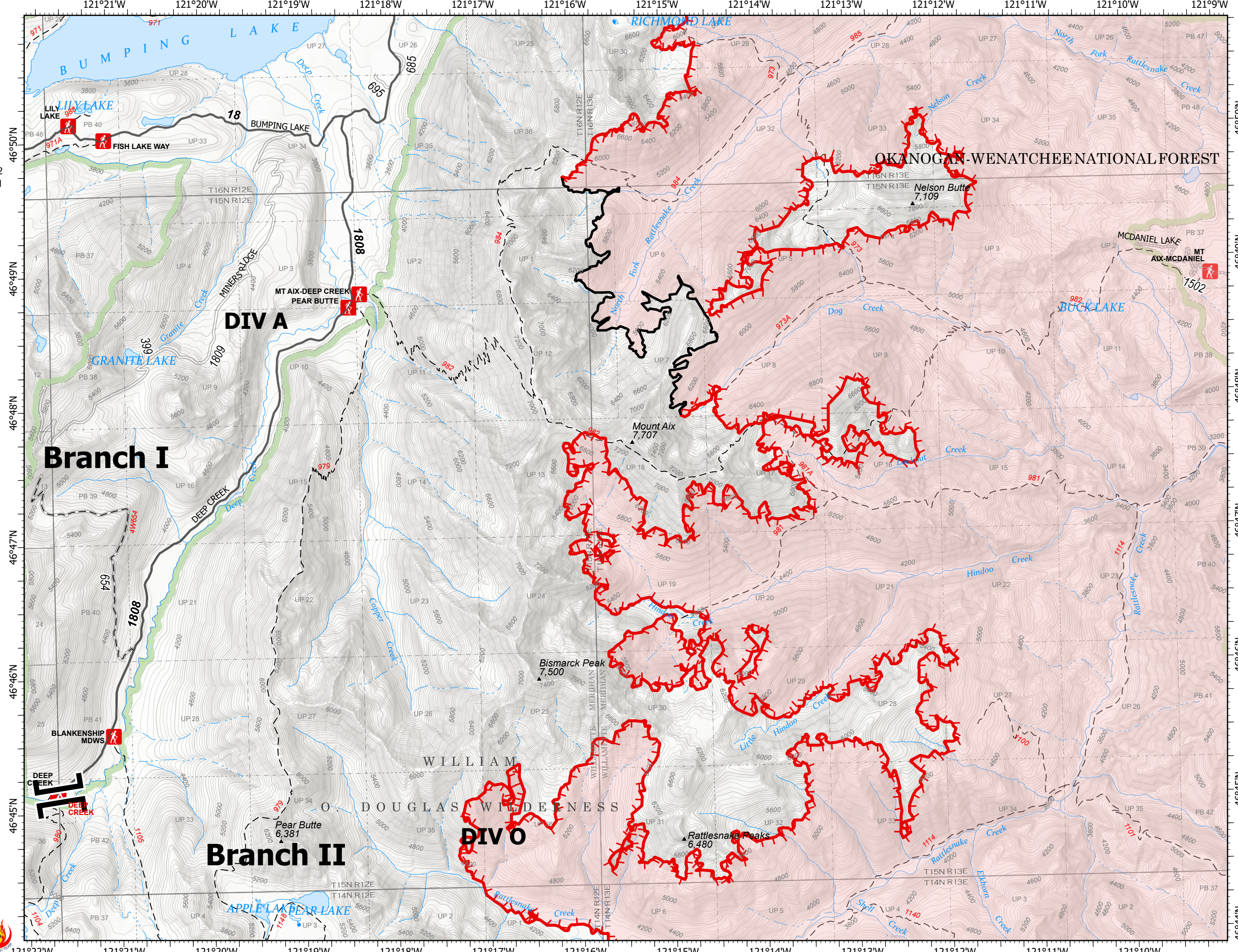
9/26/2021

105,933 acres at 9/24/2021 2340

Page 8 of 10



- Branch Break
- Repeater
- Completed Fuel Break
- Fire Edge
- Contained Line
- Administrative FS Boundary
- FS Wilderness Boundary
- Wildfire Daily Fire Perimeter



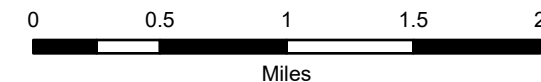
# IAP Map

Schneider Springs  
WA-OWF-000453

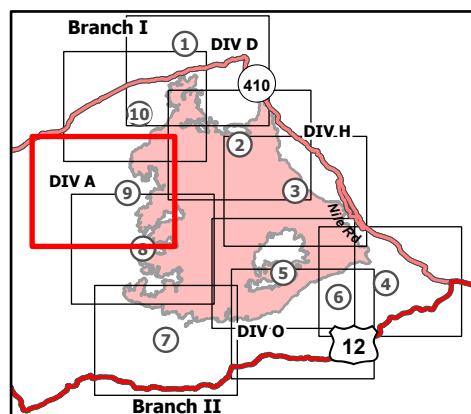
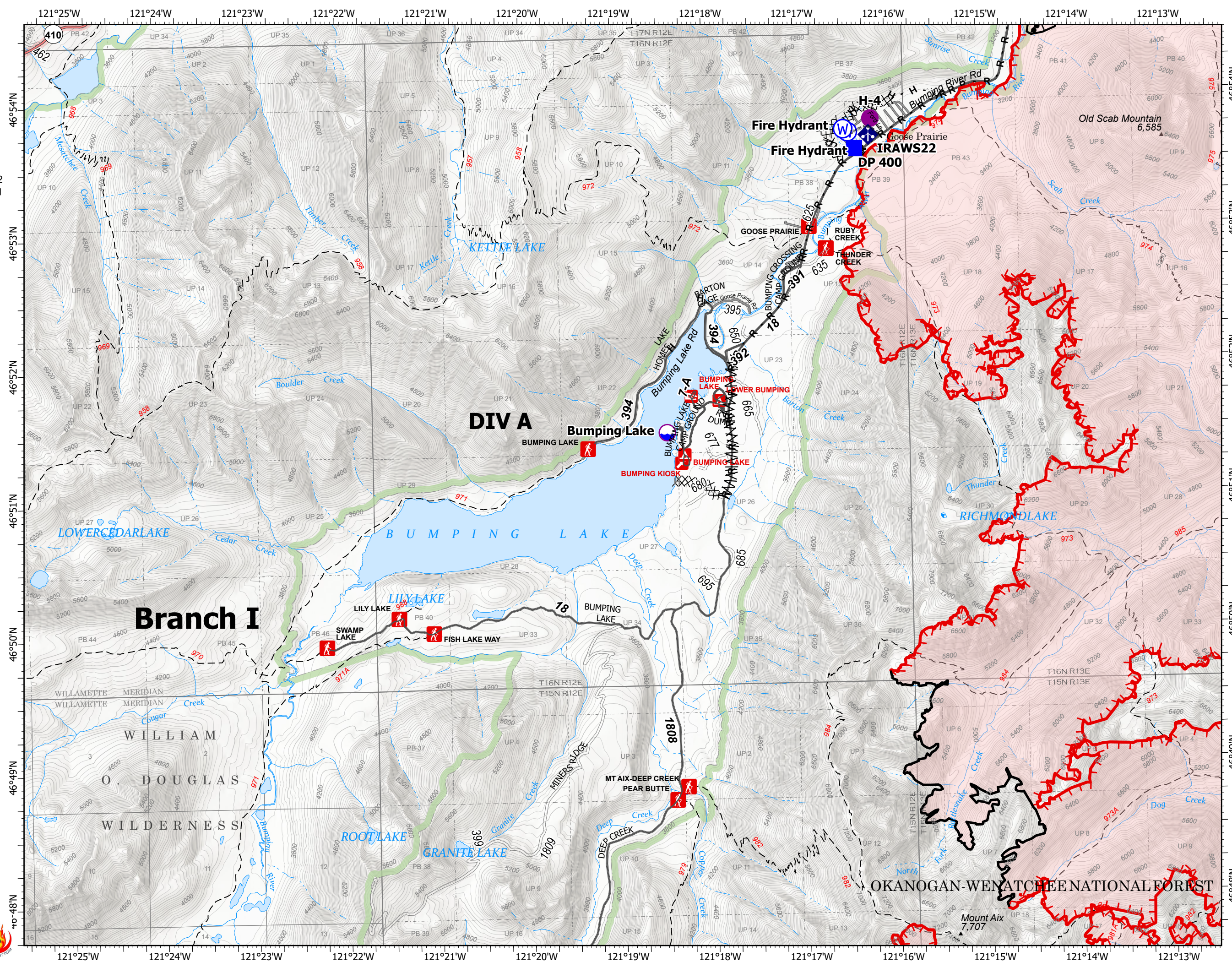
9/26/2021

105,933 acres at 9/24/2021 2340

Page 9 of 10



- Dip Site
- Helispot
- Drop Point
- Mobile Weather Unit
- Water Source
- Completed Burnout
- Completed Dozer Line
- Completed Fuel Break
- Completed Hand Line
- Completed Road as Line
- Planned Hand Line
- Fire Edge
- Contained Line
- Administrative FS Boundary
- FS Wilderness Boundary
- Wildfire Daily Fire Perimeter



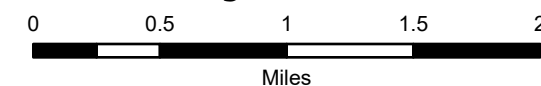
# IAP Map

Schneider Springs  
WA-OWF-000453

9/26/2021

105,933 acres at 9/24/2021 2340

Page 10 of 10



- Dip Site
- Helispot
- ) Division Break
- Drop Point
- ⊠ Closure
- Ⓢ Staging Area
- 🏠 Lookout
- 🔴 Hot Spot - Spot Fire
- ⚠ Value at Risk
- Other
- 🌉 Bridge
- 📶 Mobile Weather Unit
- 🌊 Water Source
- Ⓜ Completed Burnout
- ⊠ Completed Dozer Line
- H - Completed Hand Line
- R - Completed Road as Line
- H - Planned Hand Line
- M - Planned Mixed Construction Line
- R - Planned Road as Line
- 🔴 Fire Edge
- Contained Line
- 🟢 Administrative FS Boundary
- 🟡 FS Wilderness Boundary
- 🔴 Wildfire Daily Fire Perimeter

