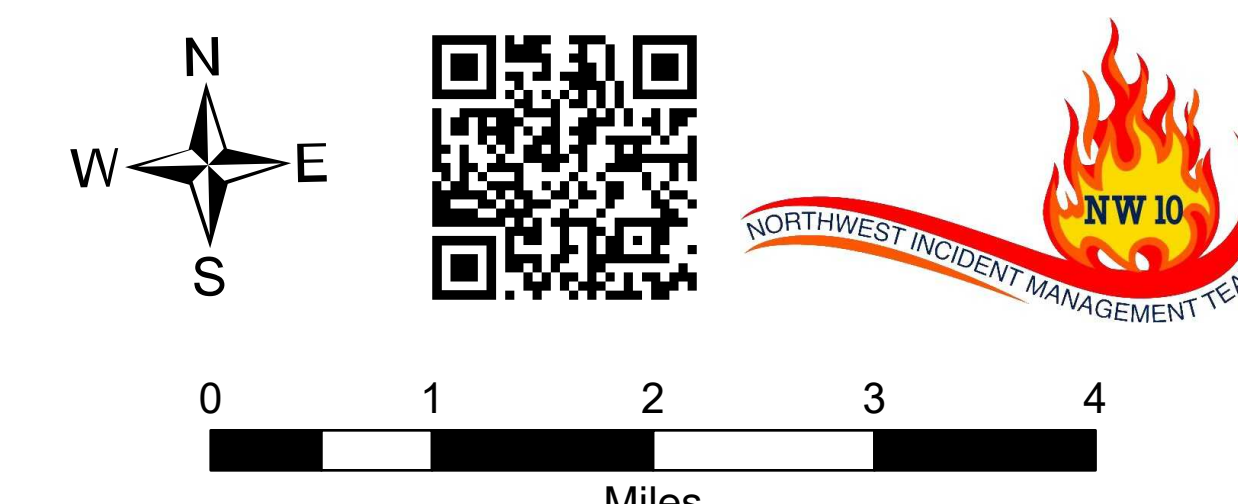


# Briefing Map

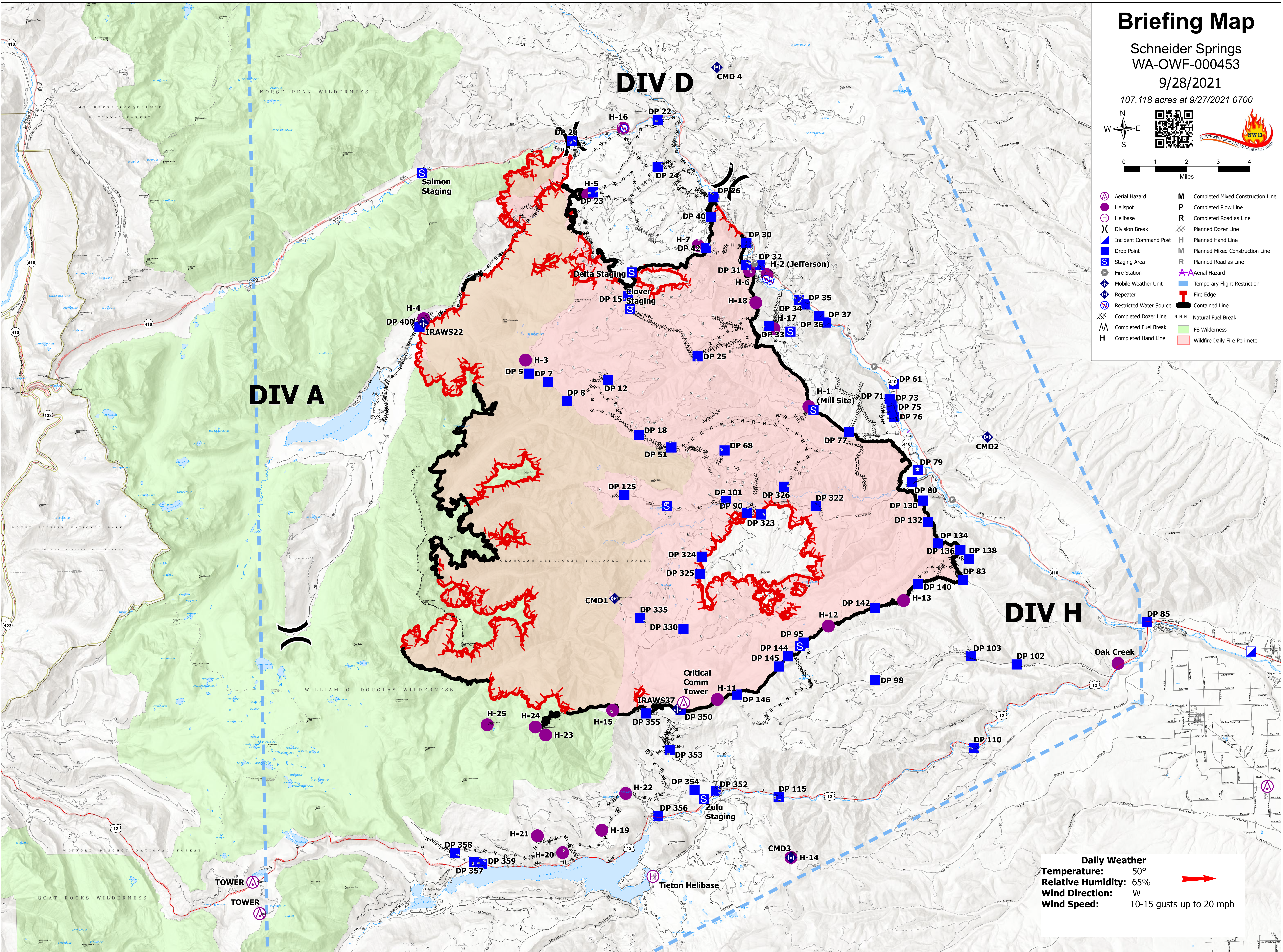
Schneider Springs  
WA-OWF-000453

9/28/2021

107,118 acres at 9/27/2021 0700



- |  |                         |  |                                     |
|--|-------------------------|--|-------------------------------------|
|  | Aerial Hazard           |  | M Completed Mixed Construction Line |
|  | Helispot                |  | P Completed Plow Line               |
|  | Helibase                |  | R Completed Road as Line            |
|  | Division Break          |  | Planned Dozer Line                  |
|  | Incident Command Post   |  | H Planned Hand Line                 |
|  | Drop Point              |  | M Planned Mixed Construction Line   |
|  | Staging Area            |  | R Planned Road as Line              |
|  | Fire Station            |  | Temporary Flight Restriction        |
|  | Mobile Weather Unit     |  | Fire Edge                           |
|  | Repeater                |  | Contained Line                      |
|  | Restricted Water Source |  | N-N Natural Fuel Break              |
|  | Completed Dozer Line    |  | FS Wilderness                       |
|  | Completed Fuel Break    |  | Wildfire Daily Fire Perimeter       |
|  | Completed Hand Line     |  |                                     |



**Daily Weather**  
Temperature: 50°  
Relative Humidity: 65%  
Wind Direction: W  
Wind Speed: 10-15 gusts up to 20 mph