

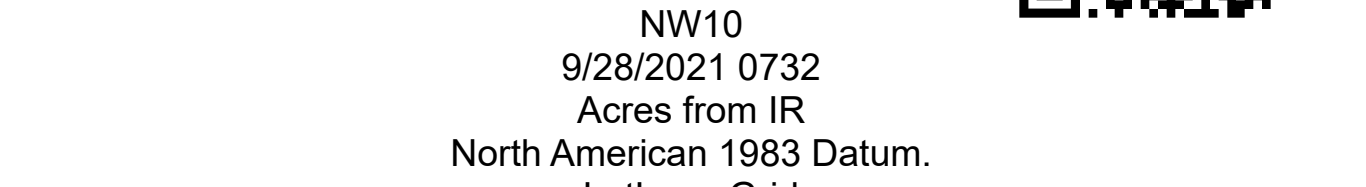
Operations Map

Schneider Springs
WA-OWF-000453
9/28/2021

107,118 acres at 9/27/2021 0700



- Aerial Hazard
- Dip Site
- Helispot
- Division Break
- Incident Command Post
- Drop Point
- Closure
- Staging Area
- Lookout
- Value at Risk
- Landmark
- Fire Station
- Bridge
- Mobile Weather Unit
- Repeater
- Hazard
- Water Source
- Restricted Water Source
- Completed Dozer Line
- Completed Fuel Road
- Completed Hand Line
- Completed Mixed Construction Line
- Completed Plow Line
- Completed Road as Line
- Planned Dozer Line
- Planned Hand Line
- Planned Mixed Construction Line
- Planned Road as Line
- Access or Improved Road
- Aerial Hazard
- Temporary Flight Restriction
- Fire Edge
- Contained Line
- Natural Fuel Break
- Wildfire Daily Fire
- Penimeter
- Structures
- Whitebark Pine
- Seed Trees
- Above Ground Power Lines
- Below Ground Power Lines
- FS - Suitable for Passenger Car
- FS - High Clearance/Closed
- Fire Fuels Treatments
- Mechanical Fuels Treatments
- DNR Fuel Treatments
- African Wiregrass
- Past Fires
- Administrative FS Boundary
- FS Wilderness Boundary
- Forest Service Land
- State Public Lands
- Other State Lands
- Bureau of Land Management Lands
- National Park Service Lands
- Other Federal Lands
- Private; Local Government; Undesignated
- Whitebark Pine Polygons
- Resource Concern



Daily Weather
Temperature: 50°
Relative Humidity: 65%
Wind Direction: W
Wind Speed: 10-15 gusts up to 20 mph

