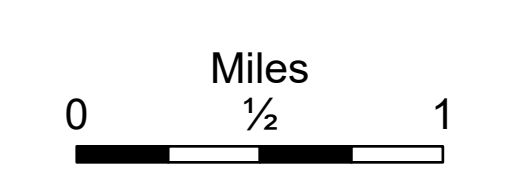


Repair Div A

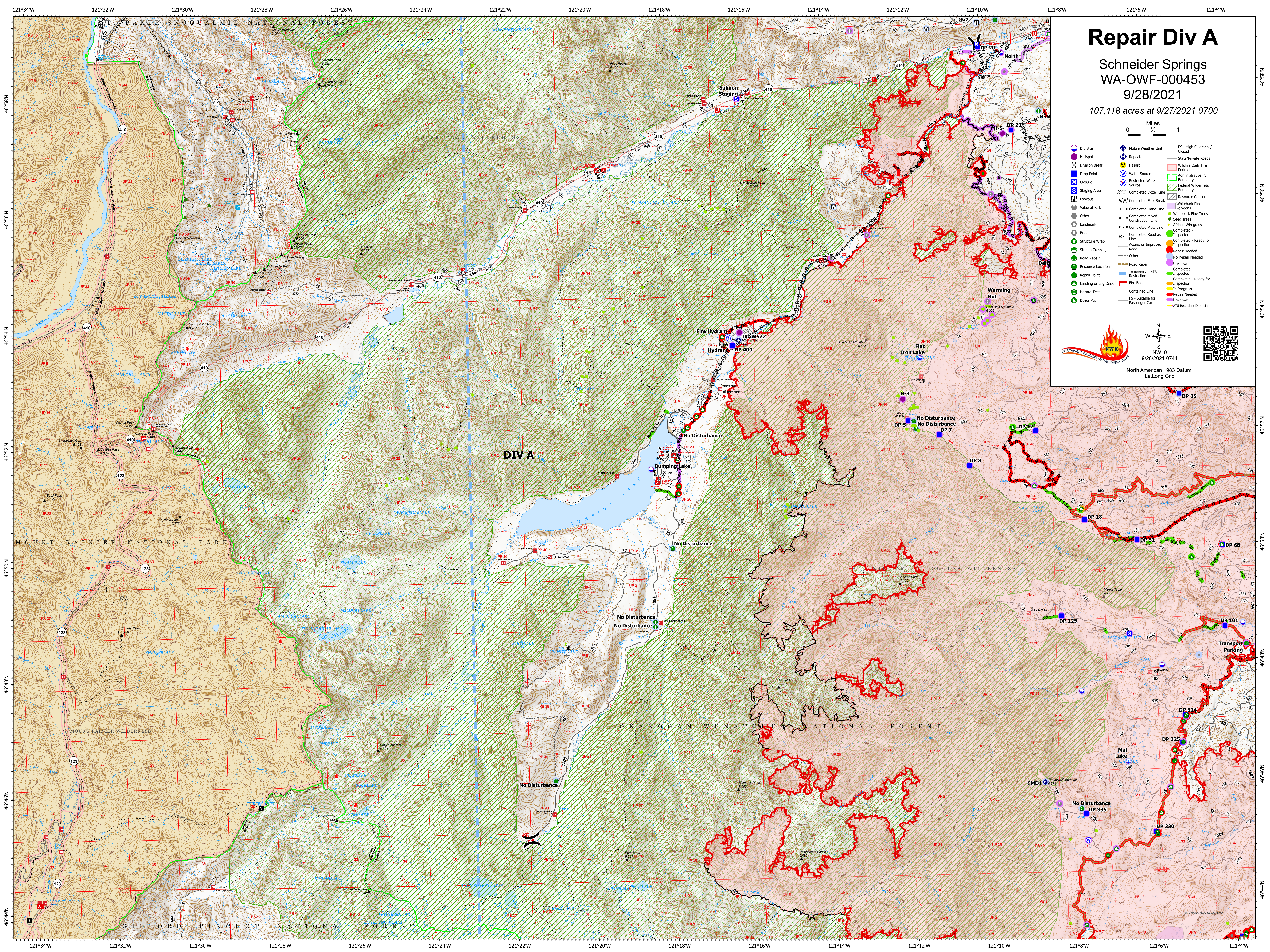
Schneider Springs
WA-OWF-000453
9/28/2021
107,118 acres at 9/27/2021 0700



- Dip Site
- Helispot
- Division Break
- Drop Point
- Closure
- Staging Area
- Lookout
- Value at Risk
- Other
- Landmark
- Bridge
- Stream Wrap
- Structure Crossing
- Road Repair
- Resource Location
- Repair Point
- Landing or Log Deck
- Hazard Tree
- Dozer Push
- Mobile Weather Unit
- Repeater
- Hazard
- Water Source
- Restricted Water Source
- Completed Dozer Line
- Completed Fuel Break
- Completed Hand Line
- Completed Mixed Construction Line
- Completed Flow Line
- Completed Road as Line
- Access or Improved Road
- Road Repair
- Resource Location
- Repair Point
- Landing or Log Deck
- Hazard Tree
- Dozer Push
- FS - High Clearance/Closed
- State/Private Roads
- Wildfire Daily Fire Perimeter
- Administrative FS Boundary
- Federal Wilderness Boundary
- Resource Concern
- Whitebark Pine Polygons
- Whitebark Pine Trees
- Seed Trees
- African Wiregrass
- Completed - Inspected
- Completed - Ready for Inspection
- Repair Needed
- No Repair Needed
- Unknown
- Completed - Inspected
- Completed - Ready for Inspection
- In Progress
- Repair Needed
- Unknown
- FS - Suitable for Passenger Car
- ATV Redundant Drop Line

N
W
E
S
NW10
9/28/2021 0744

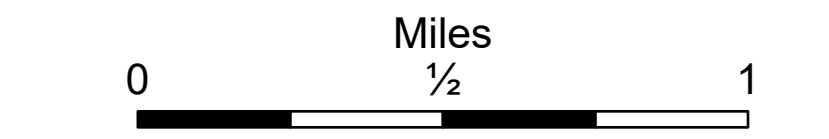
North American 1983 Datum.
Lat,Long Grid



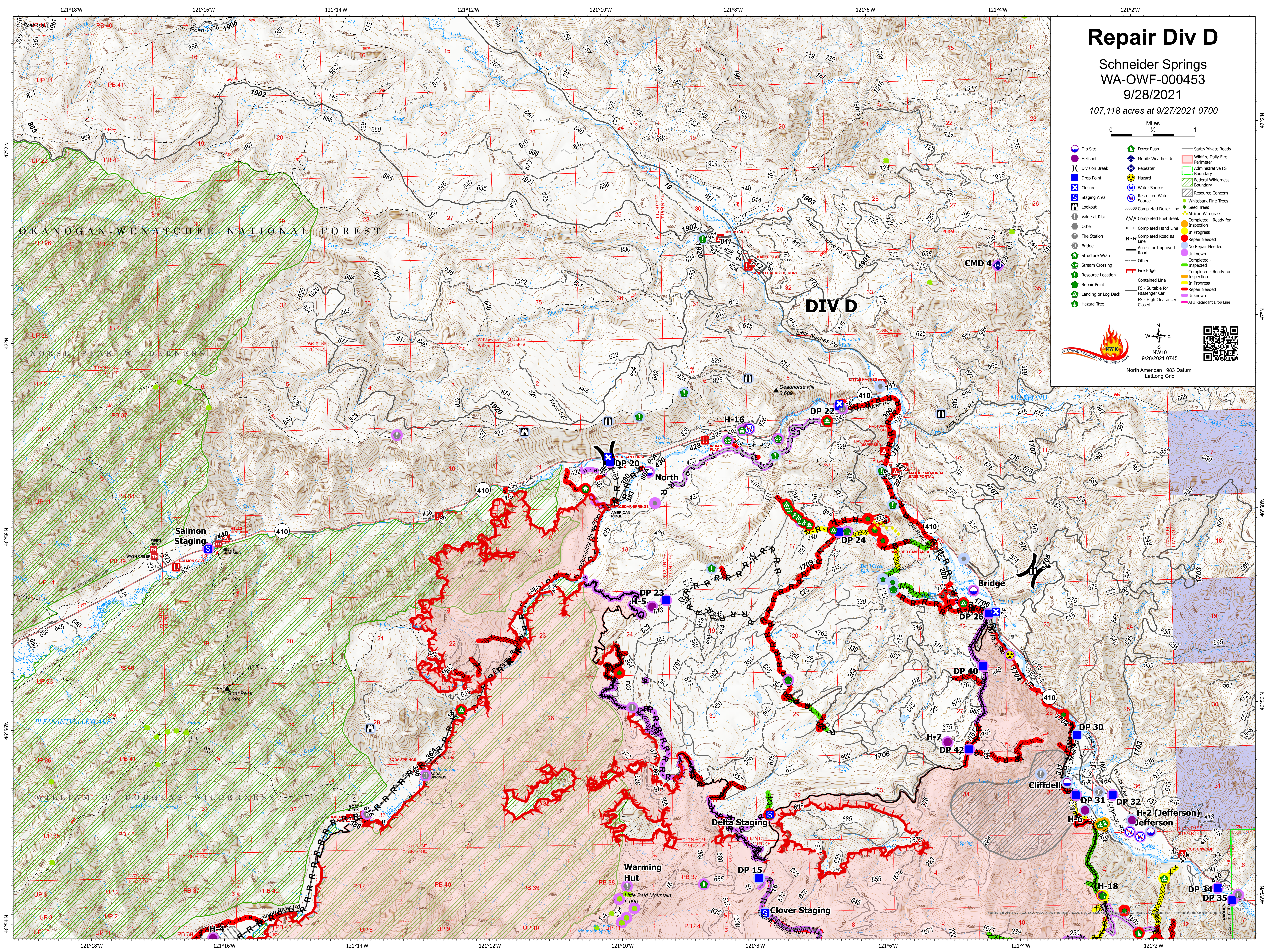
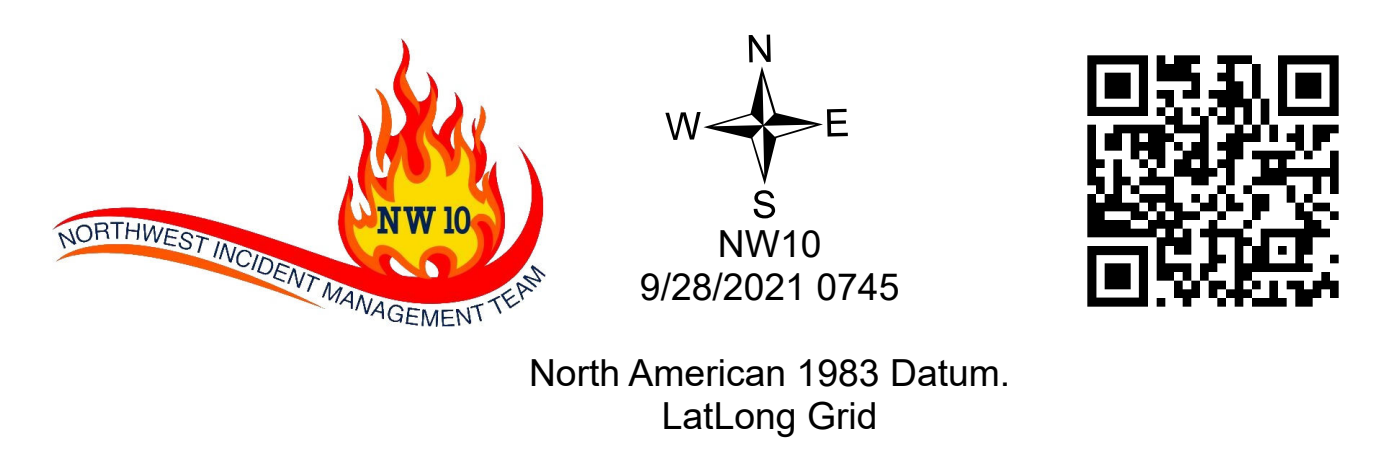
Repair Div D

Schneider Springs
WA-OWF-000453
9/28/2021

107,118 acres at 9/27/2021 0700



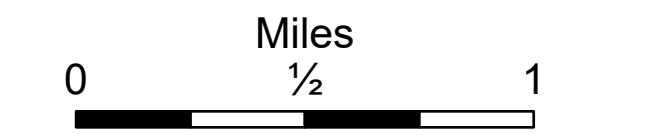
- Dip Site
- Helispot
- Division Break
- Drop Point
- Staging Area
- Lookout
- Value at Risk
- Other
- Fire Station
- Bridge
- Structure Wrap
- Stream Crossing
- Resource Location
- Repair Point
- Landing or Log Deck
- Hazard Tree
- Dozer Push
- Mobile Weather Unit
- Repeater
- Hazard
- Water Source
- Restricted Water Source
- Completed Dozer Line
- Completed Fuel Break
- Completed Hand Line
- Completed Road as
- Access or Improved Road
- Other
- Fire Edge
- Contained Line
- Repair Point
- Landing or Log Deck
- Hazard Tree
- State/Private Roads
- Wildfire Daily Fire Perimeter
- Administrative FS Boundary
- Federal Wilderness Boundary
- Resource Concern
- Whitebark Pine Trees
- Seed Trees
- African Wiregrass
- Completed - Ready for Inspection
- In Progress
- Repair Needed
- No Repair Needed
- Unknown
- Completed - Inspected
- Completed - Ready for Inspection
- In Progress
- Repair Needed
- Unknown
- ATU Retardant Drop Line



Repair Div H

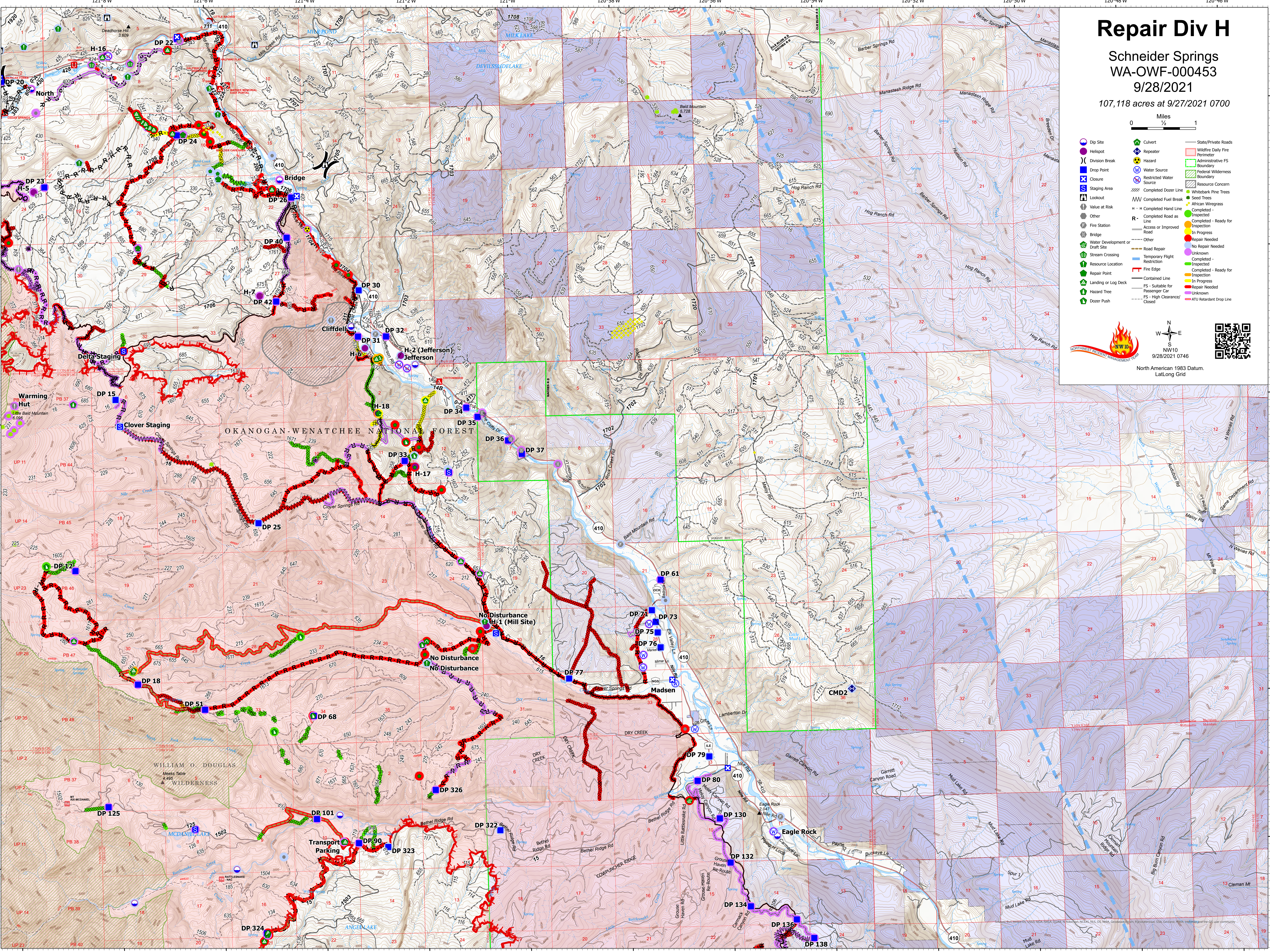
Schneider Springs
WA-OWF-000453
9/28/2021

107,118 acres at 9/27/2021 0700



- Dip Site
- Helispot
- ⌋ Division Break
- ⊗ Drop Point
- ⊗ Closure
- ⊗ Staging Area
- ⊗ Lookout
- ⊗ Value at Risk
- ⊗ Other
- ⊗ Fire Station
- ⊗ Bridge
- ⊗ Water Development or Draft Site
- ⊗ Stream Crossing
- ⊗ Resource Location
- ⊗ Repair Point
- ⊗ Landing or Log Deck
- ⊗ Hazard Tree
- ⊗ Dozer Push
- ⊗ Culvert
- ⊗ Repeater
- ⊗ Water Source
- ⊗ Restricted Water Source
- ⊗ Completed Dozer Line
- ⊗ Completed Fuel Break
- ⊗ Completed Hand Line
- ⊗ Completed Road as Inspected
- ⊗ Access or Improved Road
- ⊗ Other
- ⊗ Road Repair
- ⊗ Temporary Flight Restriction
- ⊗ Resource Crossing
- ⊗ Fire Edge
- ⊗ Contained Line
- ⊗ FS - Suitable for Passenger Car
- ⊗ FS - High Clearance/Closed
- ⊗ State/Private Roads
- ⊗ Wildfire Daily Fire Perimeter
- ⊗ Administrative FS Boundary
- ⊗ Federal Wilderness Boundary
- ⊗ Resource Concern
- ⊗ Whitebark Pine Trees
- ⊗ Seed Trees
- ⊗ African Wiregrass
- ⊗ Completed - Ready for Inspection
- ⊗ In Progress
- ⊗ No Repair Needed
- ⊗ Unknown
- ⊗ Completed - Ready for Inspection
- ⊗ In Progress
- ⊗ Repair Needed
- ⊗ Unknown
- ⊗ ATU Retardant Drop Line

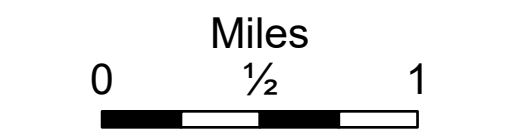
North American 1983 Datum.
Lat/Long Grid



Repair Div O

Schneider Springs
WA-OWF-000453
9/28/2021

107,118 acres at 9/27/2021 0700



Dip Site	Resource Location	Completed Road as Line	Federal Wilderness Boundary
Helispot	Repair Point	Access or Improved Road	Resource Concern
Helibase	Landing or Log Deck	Fence	Whitebark Pine
Division Break	Hazard Tree	Highlighted Feature	Polygons
Drop Point	Doser Path	Other	Whitebark Pine Trees
Closure	Culvert	Repair Line	Seed Trees
Staging Area	Repeater	Road Repair	Completed - Inspected
Lookout	Value at Risk	Temporary Flight Restriction	Completed - Ready for Inspection
Water Source	Other	Fire Edge	Repair Needed
Stream Crossing	Landmark	Contained Line	No Repair Needed
Fire Station	Fire Station	FS - Suitable for Passenger Car	Unknown
Bridge	Completed Fuel Break	FS - High Clearance	Completed - Ready for Inspection
Water Development or Stream Crossing	Completed Hand Line	State/Private Roads	In Progress
Road Repair	Stream Development or Stream Crossing	Wildfire Daily Fire Perimeter	Other - See Legend
Road Repair	Road Repair	Administrative FS	Unknown
Completed Flow Line	Boundary	ATU Retardant Drop Line	ATU Retardant Drop Line

North American 1983 Datum, Lat/Long Grid

