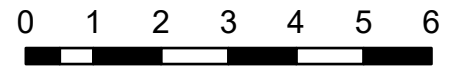


IAP Map Index

Schneider Springs
WA-OWF-000453

9/29/2021

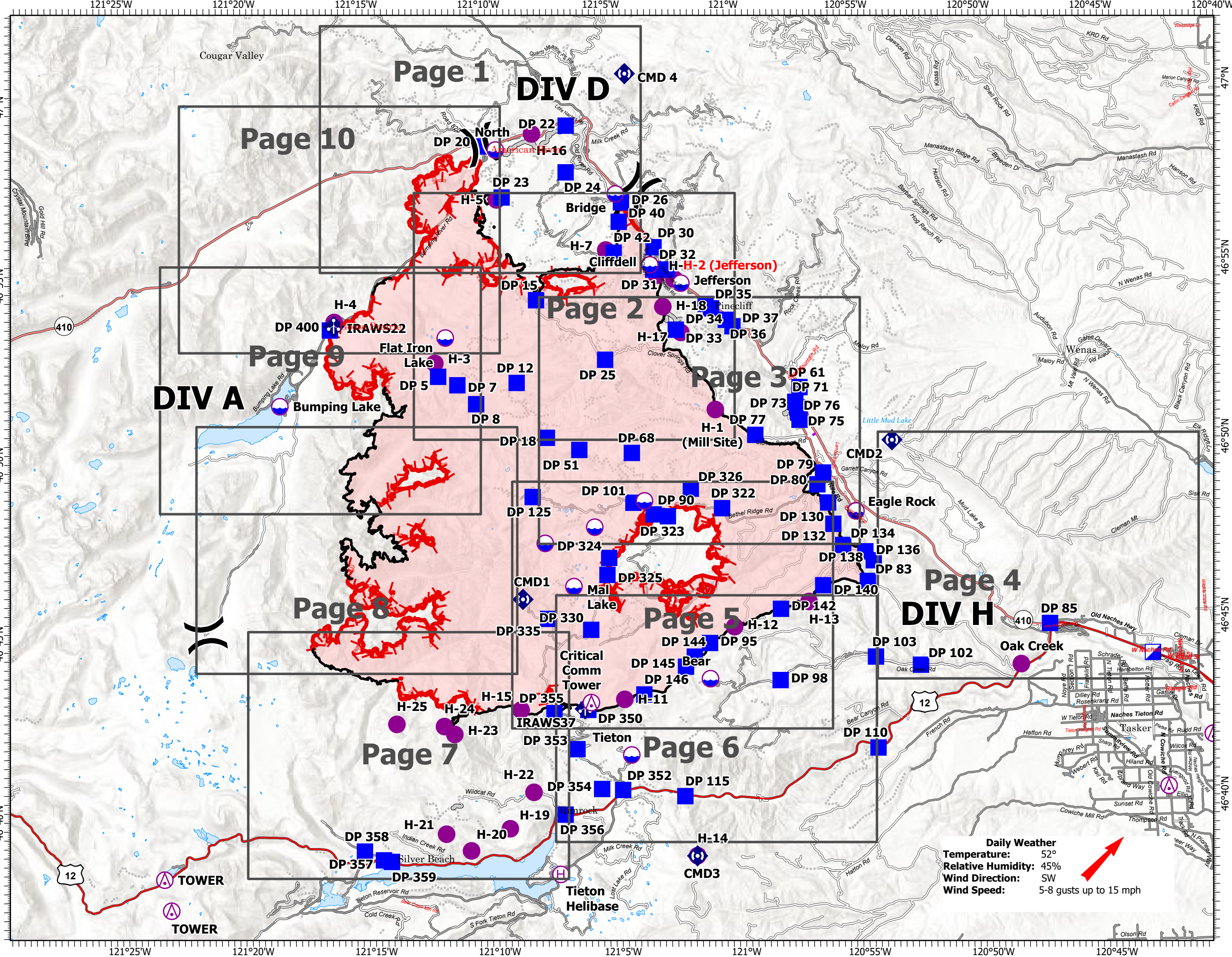
107,118 acres at 9/27/2021 0700



- Miles
- Aerial Hazard
- Dip Site
- Helispot
- Helibase
- Division Break
- Incident Command Post
- Drop Point
- Mobile Weather Unit
- Repeater
- Access or Improved Road
- Aerial Hazard
- Fire Edge
- Contained Line
- Wildfire Daily Fire Perimeter
- Grid Index



NW 10
9/28/2021 2057
Acres from IR
North American 1983 Datum.
Lat/Long Grid



Daily Weather
Temperature: 52°
Relative Humidity: 45%
Wind Direction: SW
Wind Speed: 5-8 gusts up to 15 mph

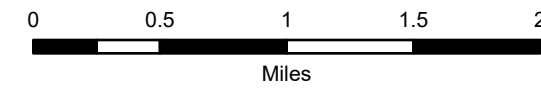
IAP Map

Schneider Springs
WA-OWF-000453

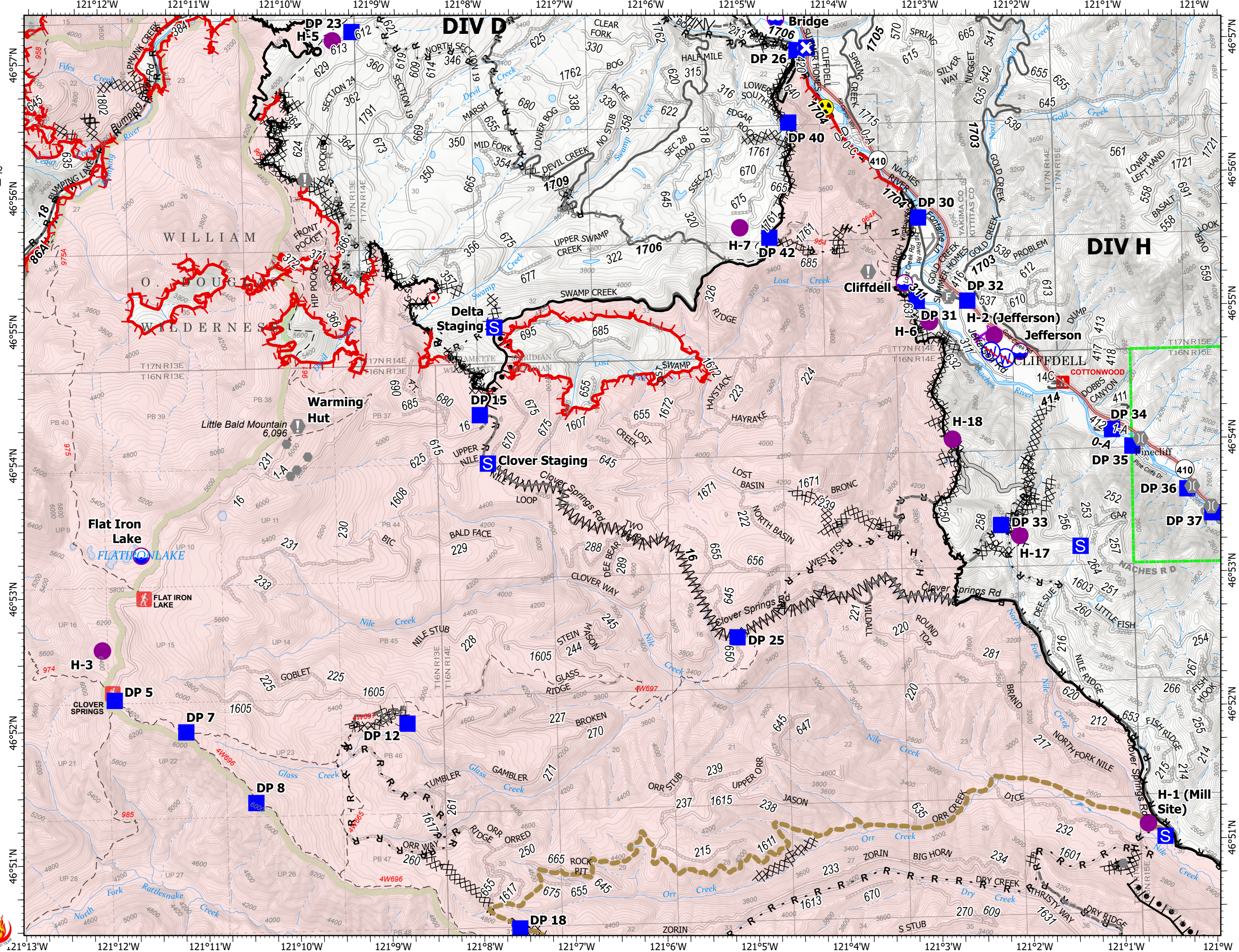
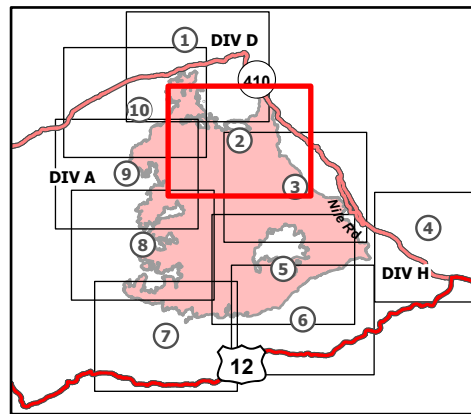
9/29/2021

107,118 acres at 9/27/2021 0700

Page 2 of 10



- Dip Site
- Helispot
- Division Break
- Drop Point
- Closure
- Staging Area
- Lookout
- Hot Spot - Spot Fire
- Value at Risk
- Other
- Fire Station
- Bridge
- Hazard
- Restricted Water Source
- Completed Burnout
- Completed Dozer Line
- Completed Fuel Break
- Completed Hand Line
- Completed Road as Line
- Planned Dozer Line
- Planned Hand Line
- Planned Road as Line
- Access or Improved Road
- Other
- Road Repair
- Aerial Hazard
- Fire Edge
- Contained Line
- Administrative FS Boundary
- FS Wilderness Boundary
- Wildfire Daily Fire Perimeter



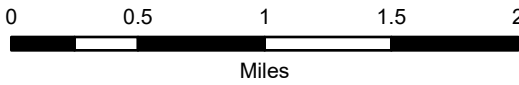
IAP Map

Schneider Springs
WA-OWF-000453

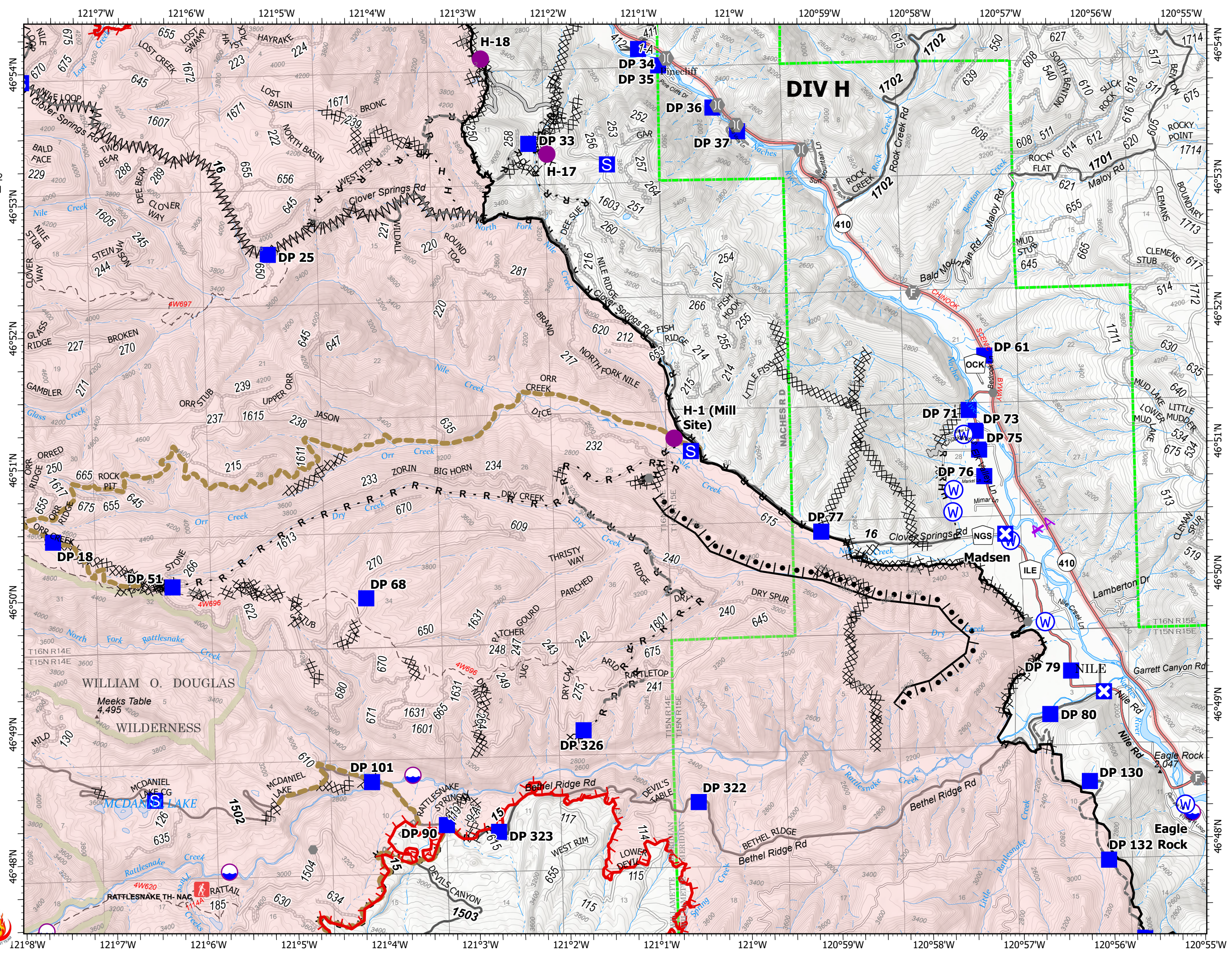
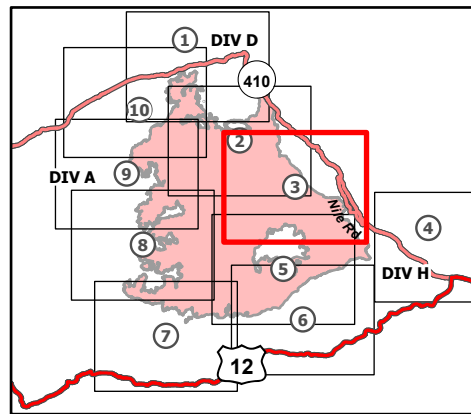
9/29/2021

107,118 acres at 9/27/2021 0700

Page 3 of 10



- Dip Site
- Helispot
- Drop Point
- Closure
- Staging Area
- Other
- Fire Station
- Bridge
- Water Source
- Completed Burnout
- Completed Dozer Line
- Completed Fuel Break
- Completed Hand Line
- Completed Road as Line
- Planned Road as Line
- Access or Improved Road
- Other
- Road Repair
- Aerial Hazard
- Fire Edge
- Contained Line
- Administrative FS Boundary
- FS Wilderness Boundary
- Wildfire Daily Fire Perimeter



IAP Map

Schneider Springs
WA-OWF-000453

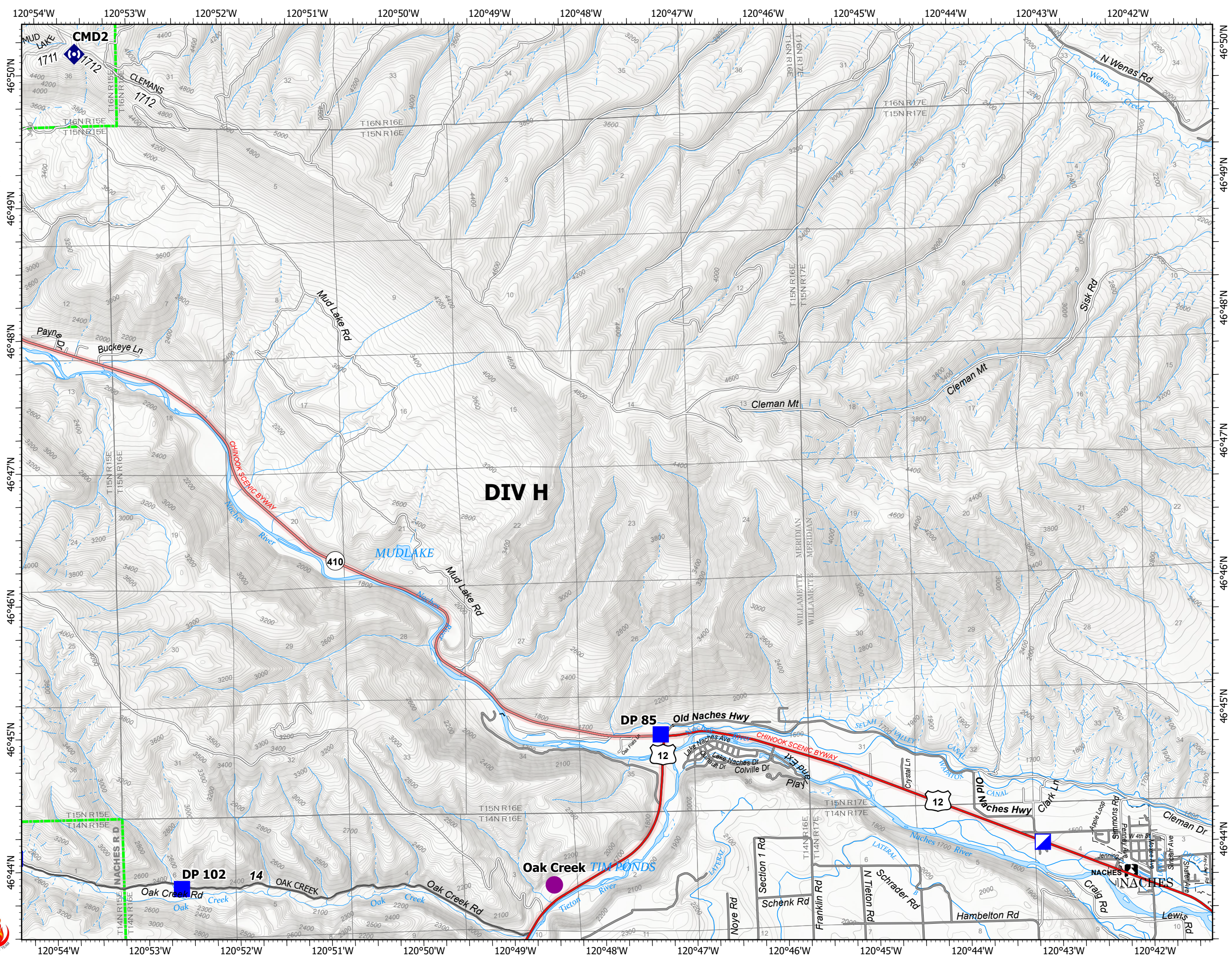
9/29/2021

107,118 acres at 9/27/2021 0700

Page 4 of 10



- Helispot
- Incident Command Post
- Drop Point
- Repeater
- Administrative FS Boundary



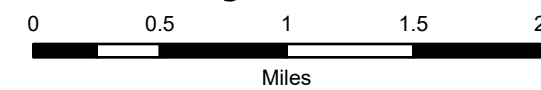
IAP Map

Schneider Springs
WA-OWF-000453

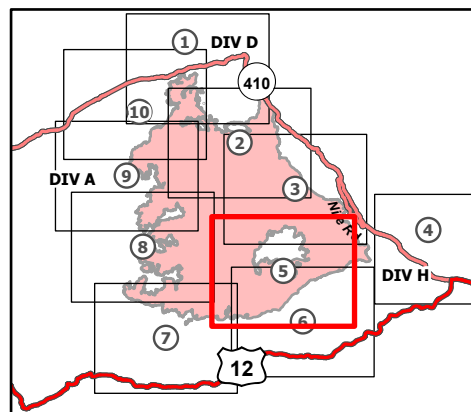
9/29/2021

107,118 acres at 9/27/2021 0700

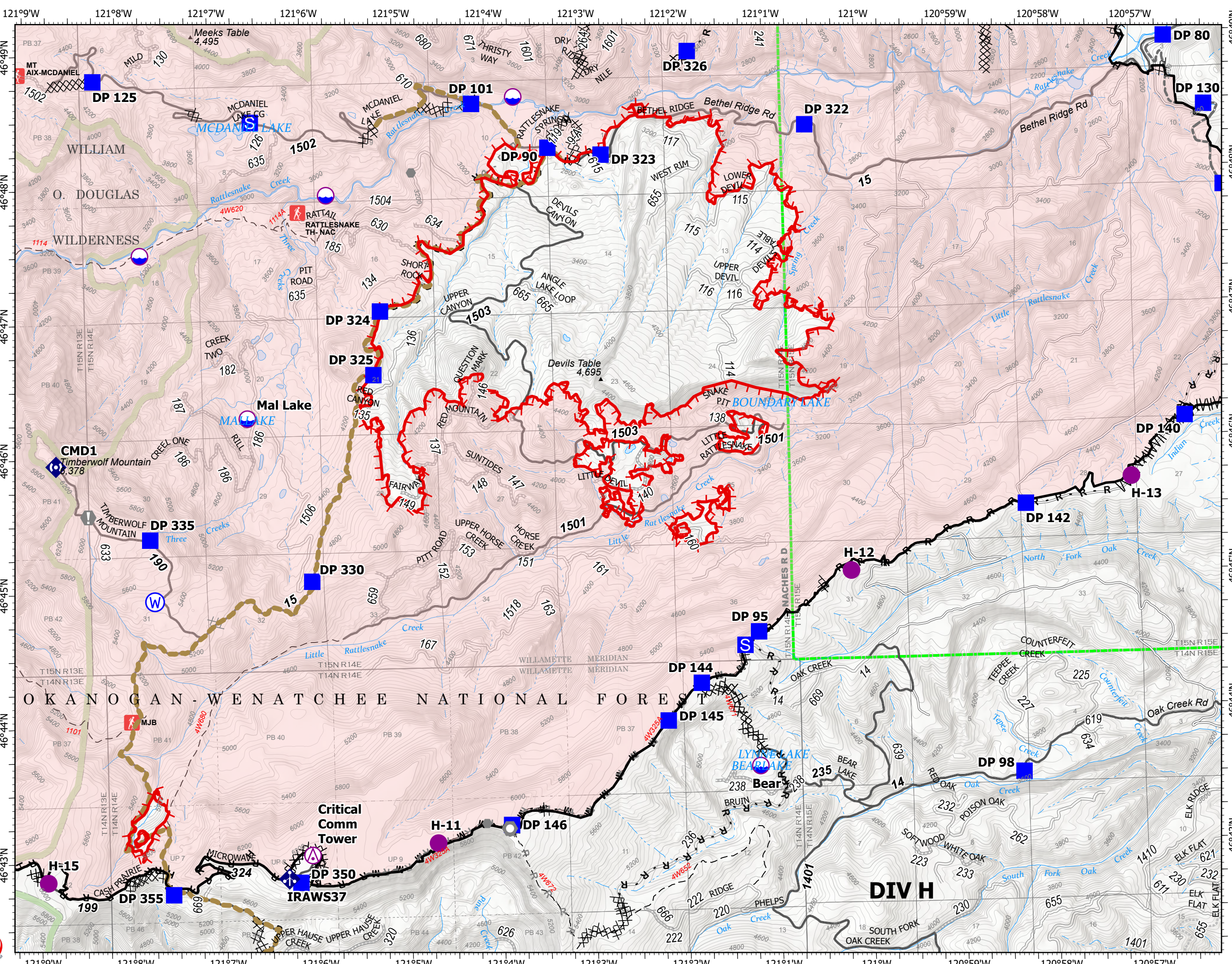
Page 5 of 10



- Aerial Hazard
- Dip Site
- Helispot
- Drop Point
- Closure
- Staging Area
- Value at Risk
- Other
- Landmark
- Mobile Weather Unit
- Repeater
- Water Source
- Completed Burnout
- Completed Dozer Line
- Completed Fuel Break
- Completed Hand Line
- Completed Mixed Construction Line
- Completed Plow Line
- Completed Road as Line
- Planned Dozer Line
- Planned Road as Line
- Other
- Road Repair
- Fire Edge
- Contained Line
- Administrative FS Boundary
- FS Wilderness Boundary
- Wildfire Daily Fire Perimeter



9/28/2021 2050
Acres from IR
North American 1983 Datum.
Lat/Long Grid



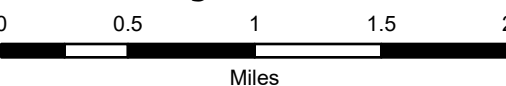
IAP Map

Schneider Springs
WA-OWF-000453

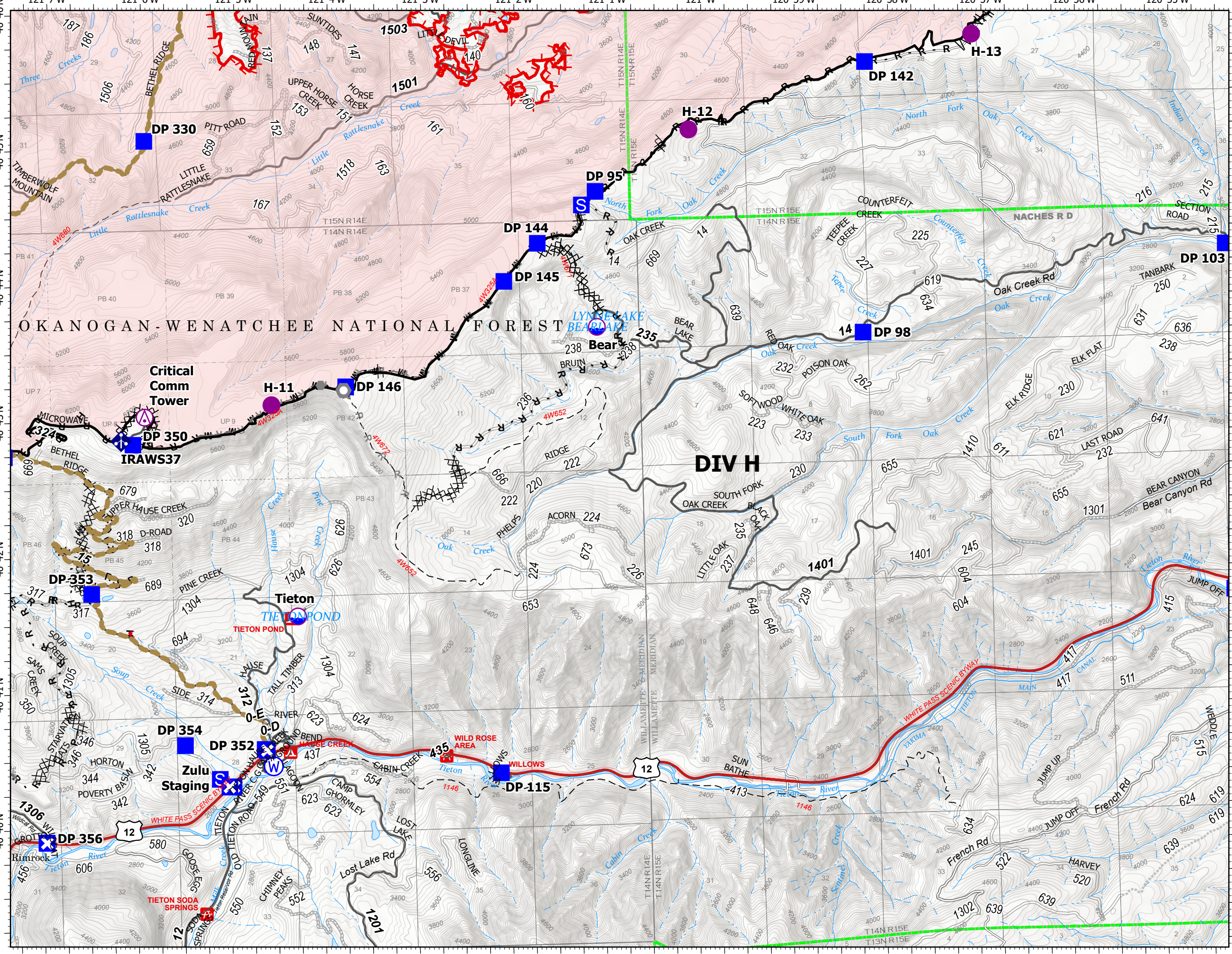
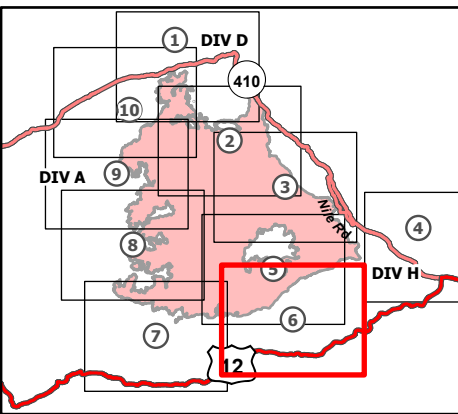
9/29/2021

107,118 acres at 9/27/2021 0700

Page 6 of 10



- Aerial Hazard
- Dip Site
- Helispot
- Drop Point
- Closure
- Staging Area
- Other
- Landmark
- Mobile Weather Unit
- Water Source
- Completed Dozer Line
- Completed Fuel Break
- Completed Hand Line
- Completed Mixed Construction Line
- Completed Plow Line
- Completed Road as Line
- Planned Dozer Line
- Planned Hand Line
- Planned Road as Line
- Fence
- Other
- Road Repair
- Fire Edge
- Contained Line
- Administrative FS Boundary
- Wildfire Daily Fire Perimeter



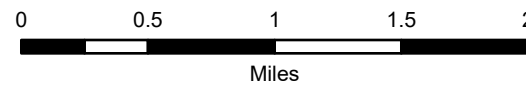
IAP Map

Schneider Springs
WA-OWF-000453

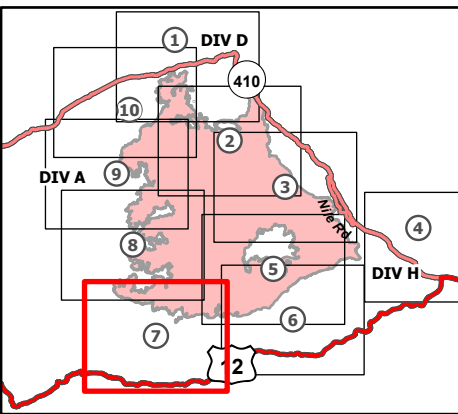
9/29/2021

107,118 acres at 9/27/2021 0700

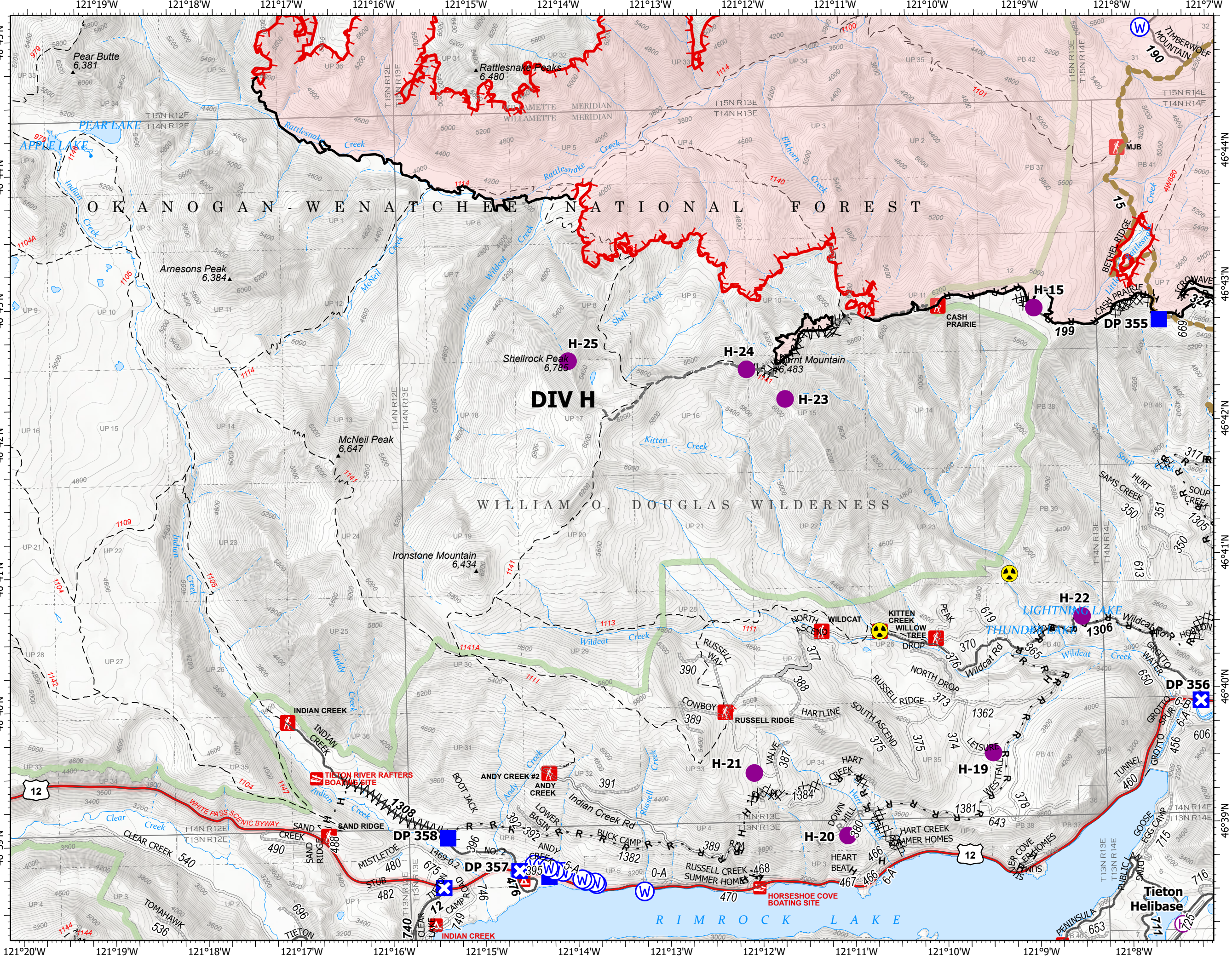
Page 7 of 10



- Helispot
- ⊕ Helibase
- Drop Point
- ⊠ Closure
- ☠ Hazard
- ⊙ Water Source
- Completed Dozer Line
- Completed Fuel Break
- H - Completed Hand Line
- R - Completed Road as Line
- Planned Dozer Line
- R - Planned Road as Line
- Access or Improved Road
- Other
- Road Repair
- Fire Edge
- Contained Line
- Administrative FS Boundary
- FS Wilderness Boundary
- Wildfire Daily Fire Perimeter



9/28/2021 2051
Acres from IR
North American 1983 Datum.
Lat/Long Grid



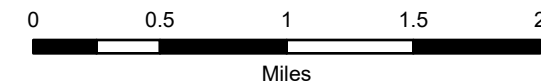
IAP Map

Schneider Springs
WA-OWF-000453

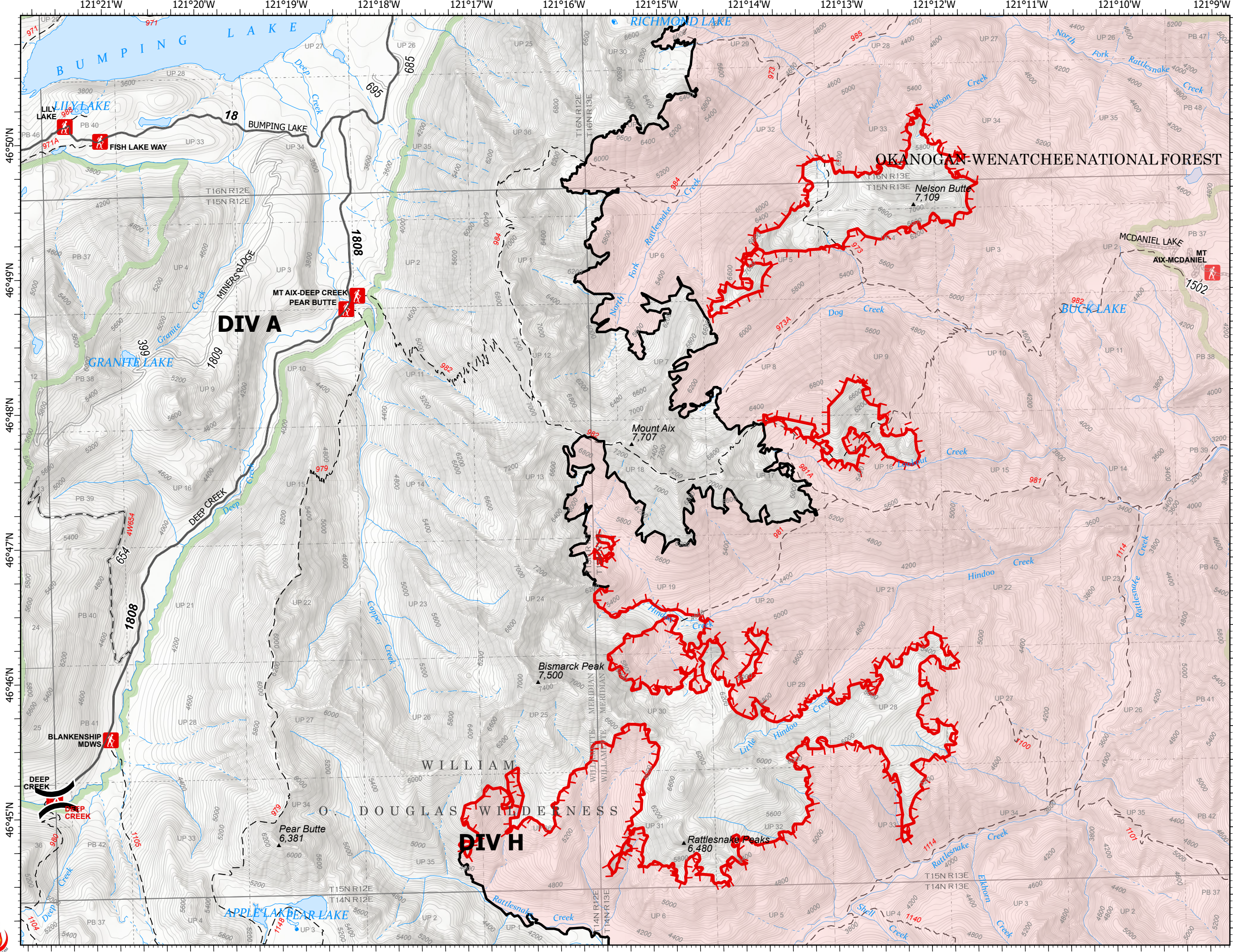
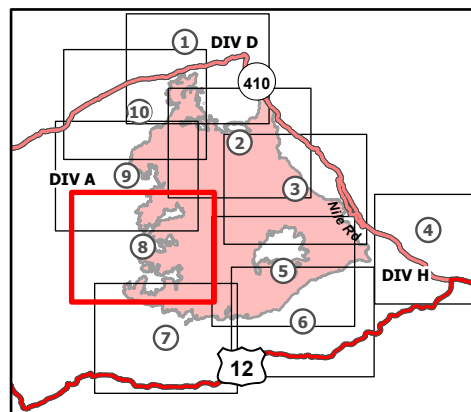
9/29/2021

107,118 acres at 9/27/2021 0700

Page 8 of 10



- (X) Division Break
- ◆ Repeater
- ≡ Completed Fuel Break
- ▬ Fire Edge
- Contained Line
- ▭ Administrative FS Boundary
- ▭ FS Wilderness Boundary
- ▭ Wildfire Daily Fire Perimeter



9/28/2021 2051
Acres from IR
North American 1983 Datum.
Lat/Long Grid



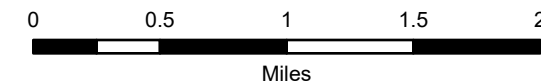
IAP Map

Schneider Springs
WA-OWF-000453

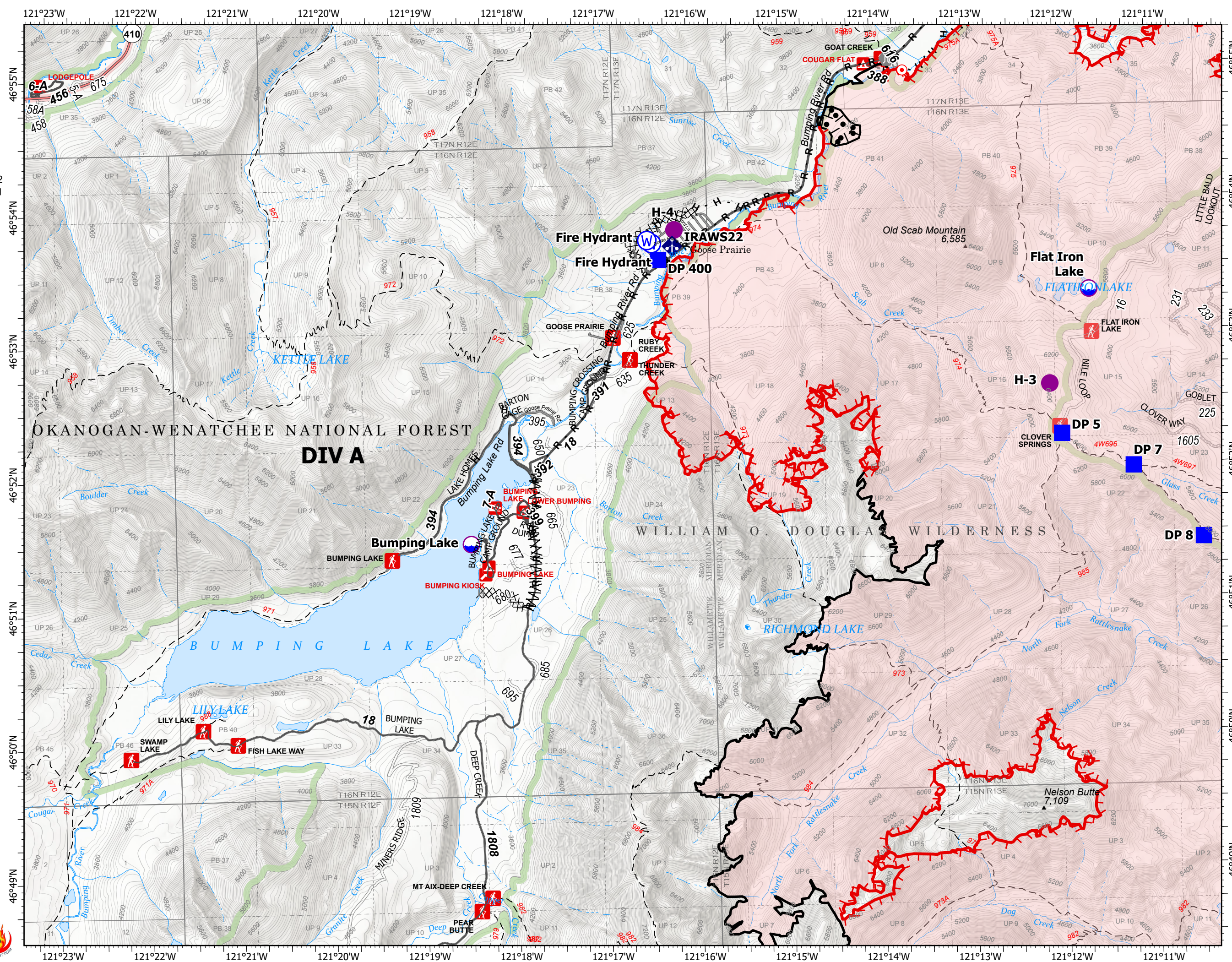
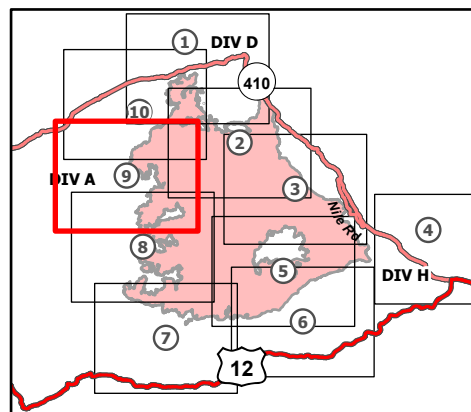
9/29/2021

107,118 acres at 9/27/2021 0700

Page 9 of 10



- Dip Site
- Helispot
- Drop Point
- Hot Spot - Spot Fire
- Value at Risk
- Other
- Bridge
- Mobile Weather Unit
- Water Source
- Completed Burnout
- Completed Dozer Line
- Completed Fuel Break
- Completed Hand Line
- Completed Road as Line
- Planned Hand Line
- Other
- Fire Edge
- Contained Line
- Administrative FS Boundary
- FS Wilderness Boundary
- Wildfire Daily Fire Perimeter



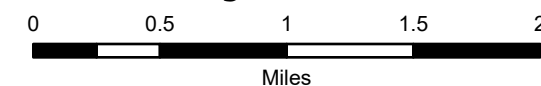
IAP Map

Schneider Springs
WA-OWF-000453

9/29/2021

107,118 acres at 9/27/2021 0700

Page 10 of 10



- Dip Site
- Helispot
-) Division Break
- Drop Point
- ⊠ Closure
- Ⓢ Staging Area
- 🏠 Lookout
- 🔴 Hot Spot - Spot Fire
- ⚠ Value at Risk
- Other
- 🌉 Bridge
- 📶 Mobile Weather Unit
- 🌊 Water Source
- Ⓜ Completed Burnout
- ⊠ Completed Dozer Line
- H - Completed Hand Line
- R - Completed Road as Line
- H - Planned Hand Line
- M - Planned Mixed Construction Line
- R - Planned Road as Line
- Other
- 🔴 Fire Edge
- ⬜ Contained Line
- 🟢 Administrative FS Boundary
- 🟡 FS Wilderness Boundary
- 🟠 Wildfire Daily Fire Perimeter

