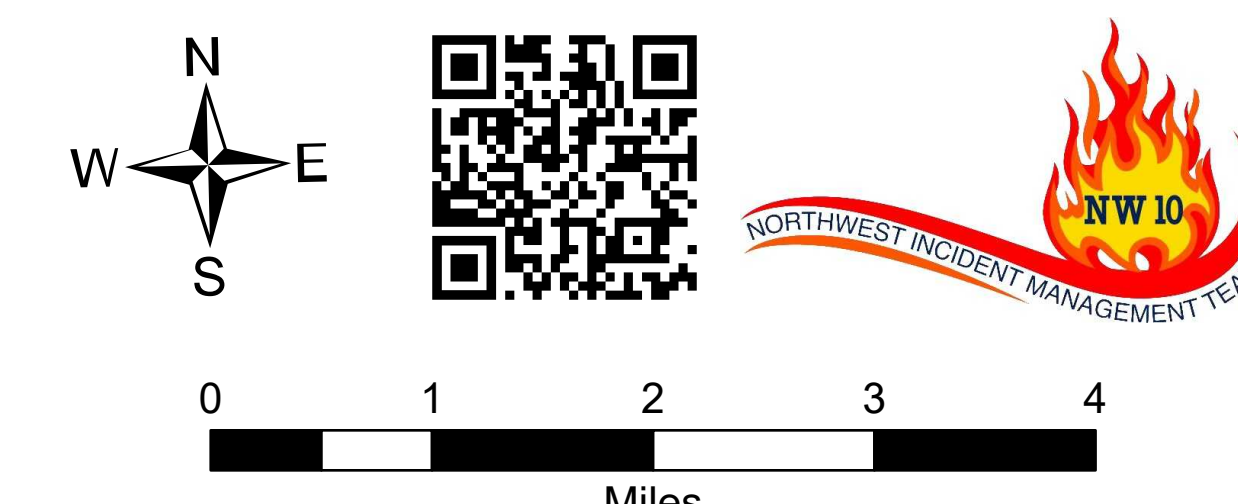


Briefing Map

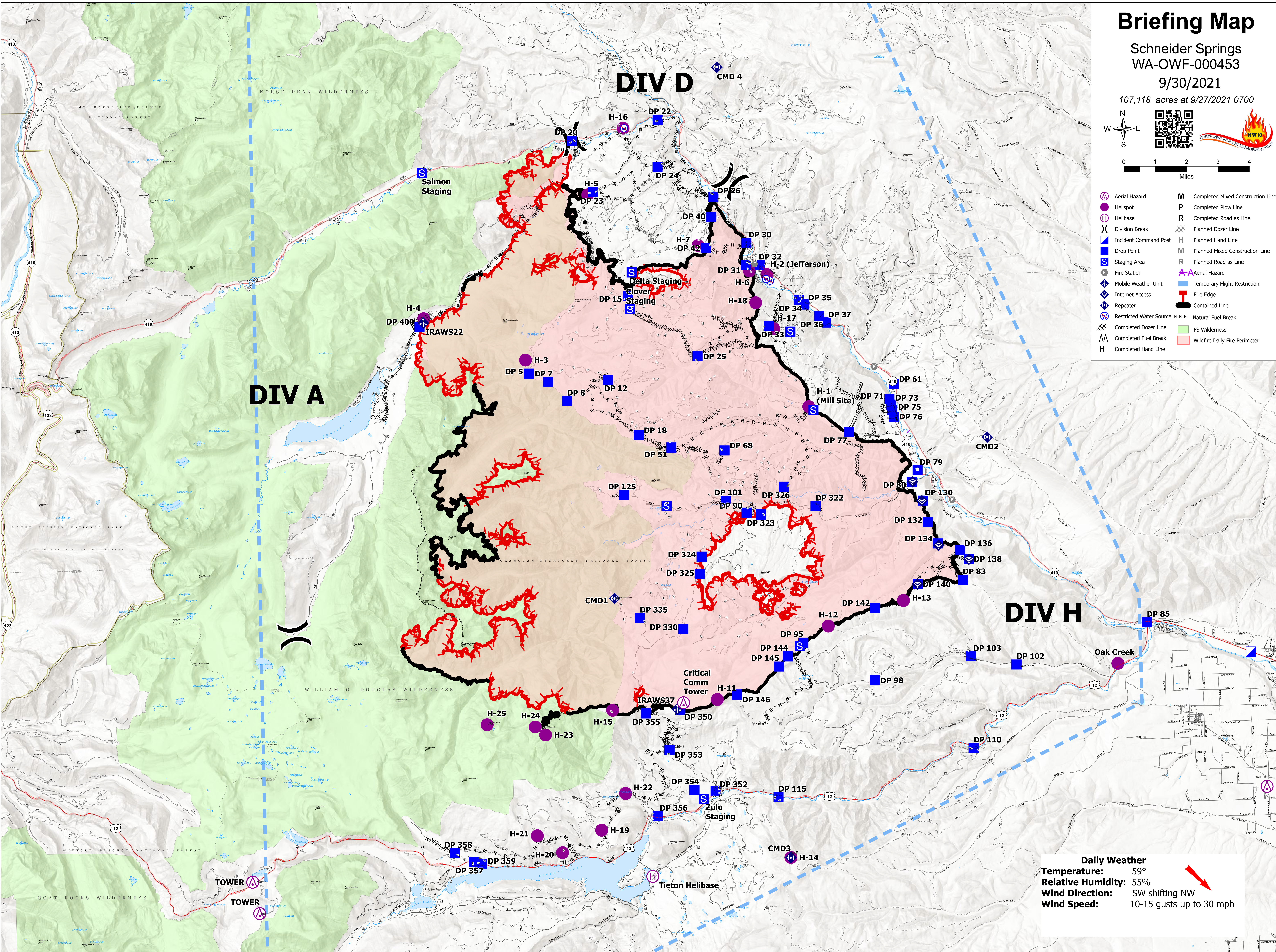
Schneider Springs
WA-OWF-000453

9/30/2021

107,118 acres at 9/27/2021 0700



- | | | | |
|--|-------------------------|--|-----------------------------------|
| | Aerial Hazard | | Completed Mixed Construction Line |
| | Helispot | | Completed Plow Line |
| | Helibase | | Completed Road as Line |
| | Division Break | | Planned Dozer Line |
| | Incident Command Post | | Planned Hand Line |
| | Drop Point | | Planned Mixed Construction Line |
| | Staging Area | | Planned Road as Line |
| | Fire Station | | Aerial Hazard |
| | Mobile Weather Unit | | Temporary Flight Restriction |
| | Internet Access | | Fire Edge |
| | Repeater | | Contained Line |
| | Restricted Water Source | | Natural Fuel Break |
| | Completed Dozer Line | | FS Wilderness |
| | Completed Fuel Break | | Wildfire Daily Fire Perimeter |
| | Completed Hand Line | | |



Daily Weather
Temperature: 59°
Relative Humidity: 55%
Wind Direction: SW shifting NW
Wind Speed: 10-15 gusts up to 30 mph