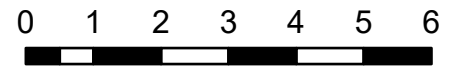


IAP Map Index

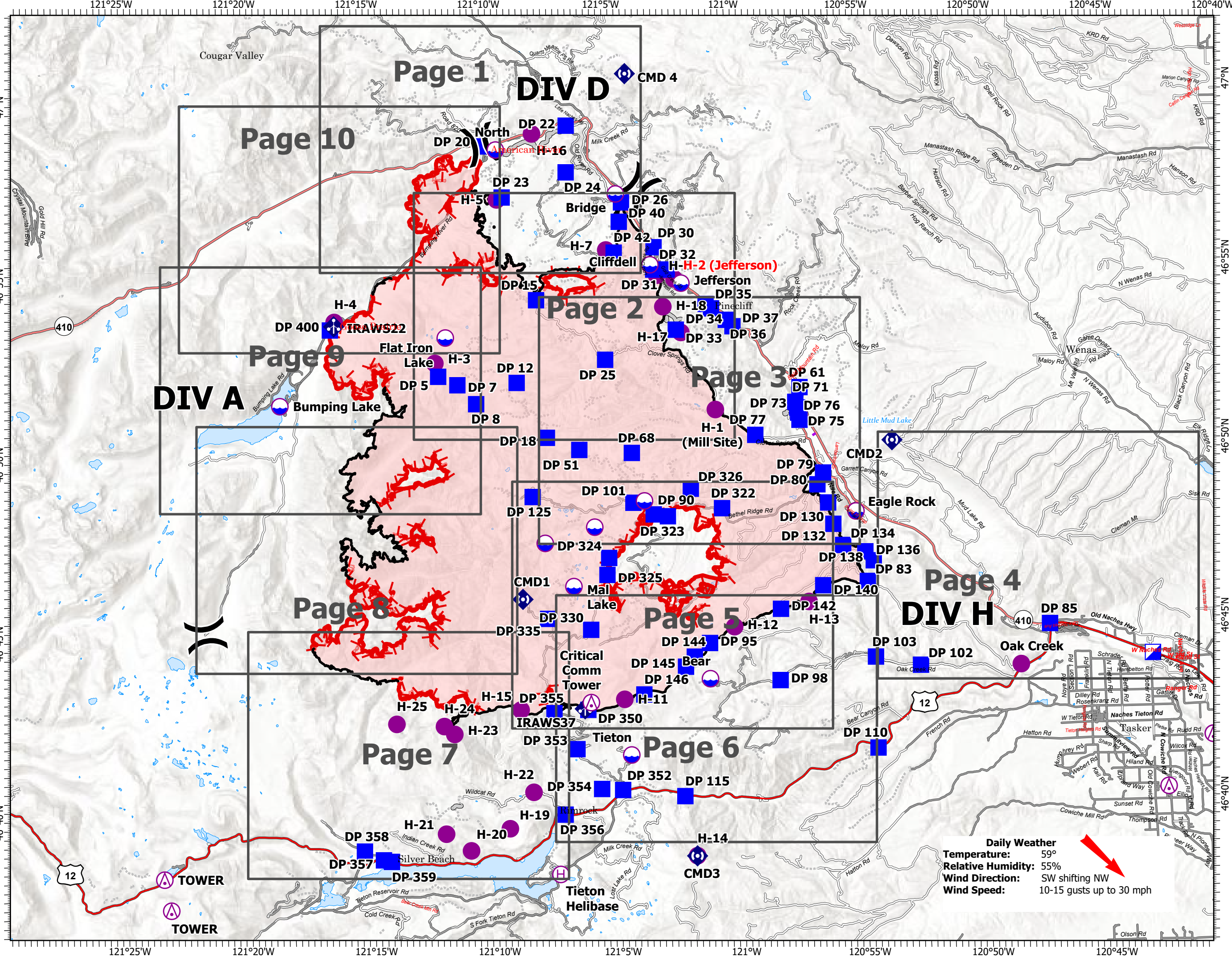
Schneider Springs
WA-OWF-000453

9/30/2021

107,118 acres at 9/27/2021 0700



- Miles
- Aerial Hazard
- Dip Site
- Helispot
- Helibase
- Division Break
- Incident Command Post
- Drop Point
- Mobile Weather Unit
- Repeater
- Access or Improved Road
- Aerial Hazard
- Fire Edge
- Contained Line
- Wildfire Daily Fire Perimeter
- Grid Index



Daily Weather
Temperature: 59°
Relative Humidity: 55%
Wind Direction: SW shifting NW
Wind Speed: 10-15 gusts up to 30 mph



NW 10
9/29/2021 2056
Acres from IR
North American 1983 Datum.
Lat/Long Grid



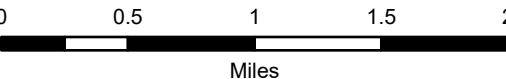
IAP Map

Schneider Springs
WA-OWF-000453

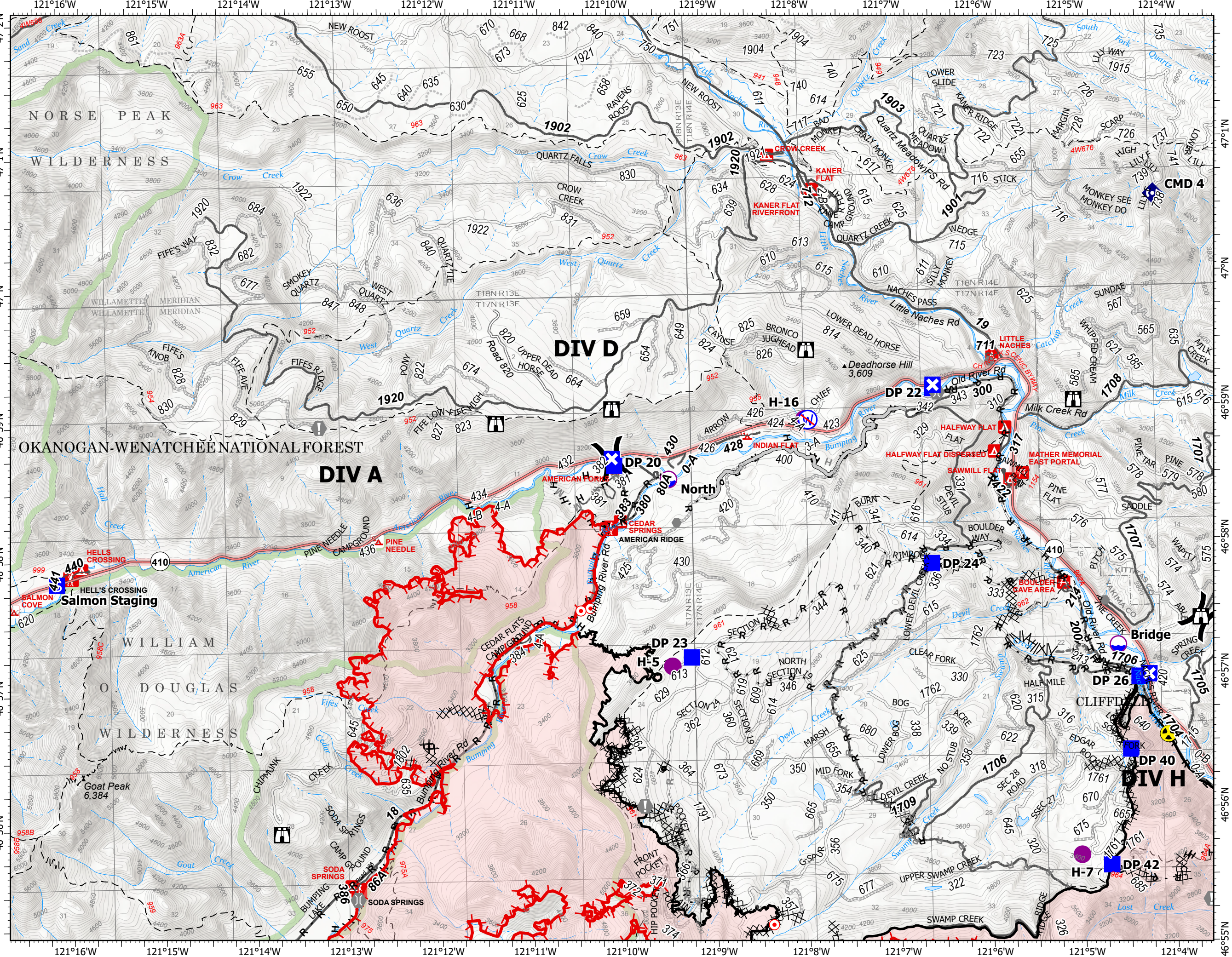
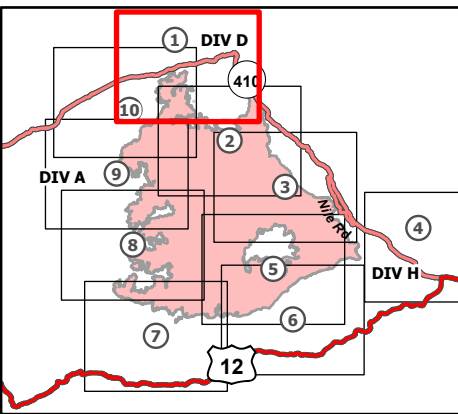
9/30/2021

107,118 acres at 9/27/2021 0700

Page 1 of 10



- Dip Site
- Helispot
- Division Break
- Drop Point
- Closure
- Staging Area
- Lookout
- Hot Spot - Spot Fire
- Value at Risk
- Other
- Bridge
- Repeater
- Hazard
- Restricted Water Source
- Completed Dozer Line
- Completed Fuel Break
- H - Completed Hand Line
- R - Completed Road as Line
- Planned Dozer Line
- H - Planned Hand Line
- M - Planned Mixed Construction Line
- R - Planned Road as Line
- Access or Improved Road
- Other
- Fire Edge
- Contained Line
- Administrative FS Boundary
- FS Wilderness Boundary
- Wildfire Daily Fire Perimeter



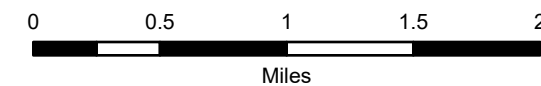
IAP Map

Schneider Springs
WA-OWF-000453

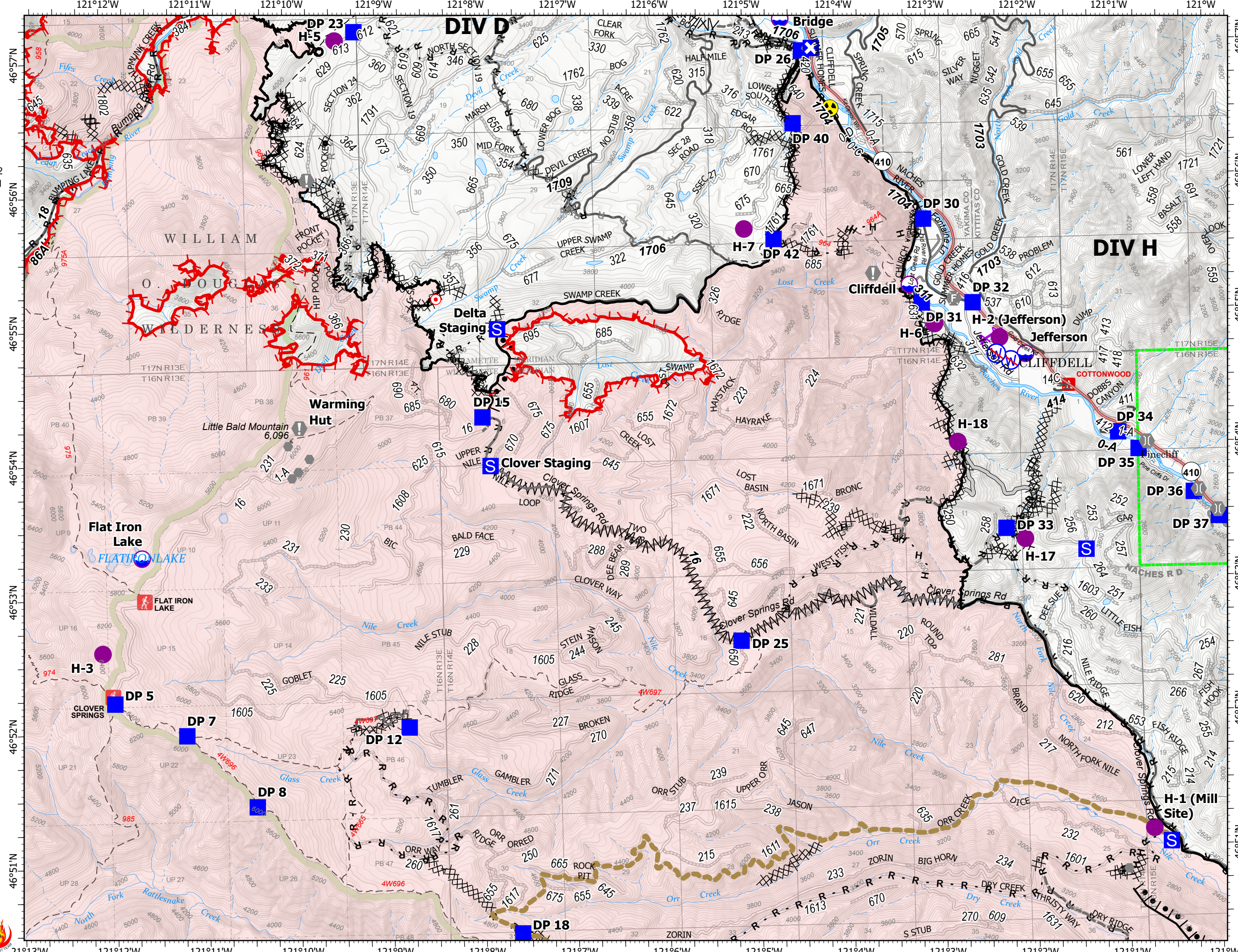
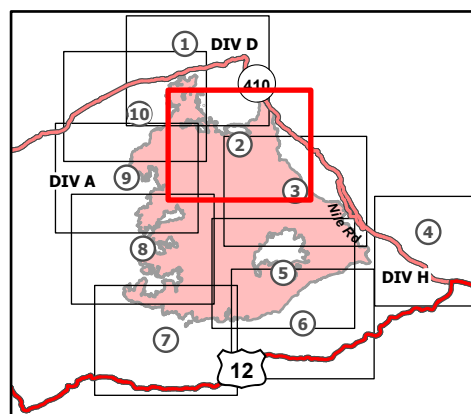
9/30/2021

107,118 acres at 9/27/2021 0700

Page 2 of 10



- Dip Site
- Helispot
- Division Break
- Drop Point
- Closure
- Staging Area
- Lookout
- Hot Spot - Spot Fire
- Value at Risk
- Other
- Fire Station
- Bridge
- Hazard
- Restricted Water Source
- Completed Burnout
- Completed Dozer Line
- Completed Fuel Break
- Completed Hand Line
- Completed Road as Line
- Planned Dozer Line
- Planned Hand Line
- Planned Road as Line
- Access or Improved Road
- Other
- Road Repair
- Aerial Hazard
- Fire Edge
- Contained Line
- Administrative FS Boundary
- FS Wilderness Boundary
- Wildfire Daily Fire Perimeter



9/29/2021 2048
Acres from IR
North American 1983 Datum.
Lat/Long Grid



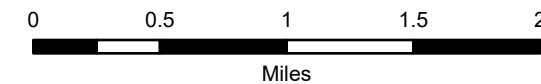
IAP Map

Schneider Springs
WA-OWF-000453

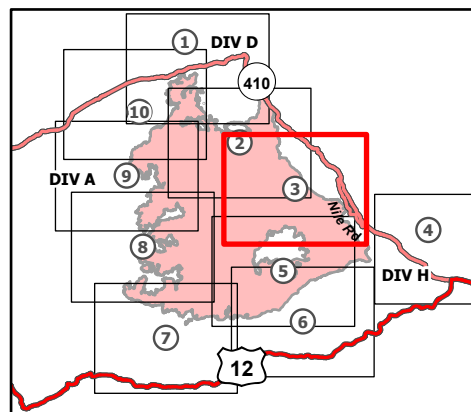
9/30/2021

107,118 acres at 9/27/2021 0700

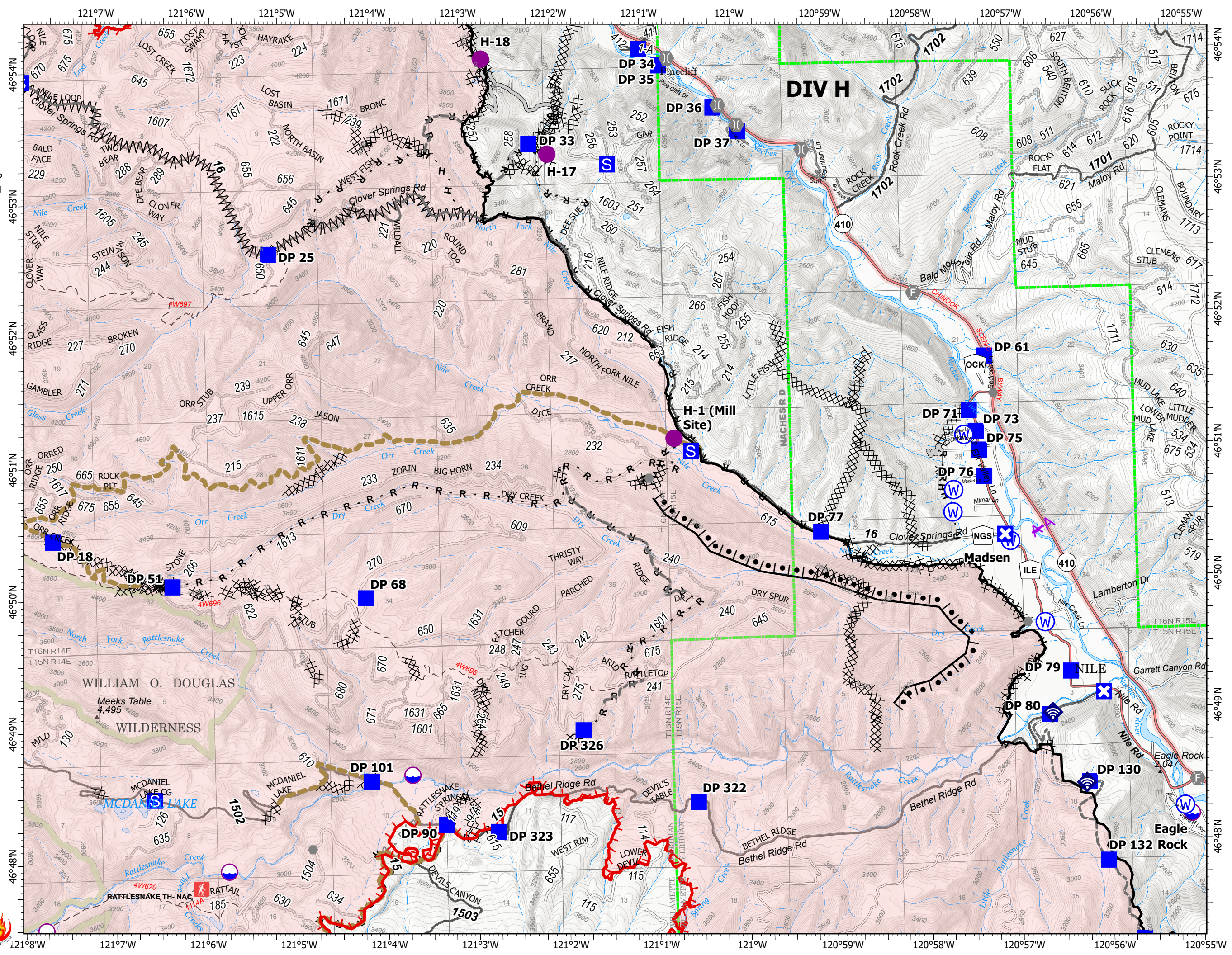
Page 3 of 10



- Dip Site
- Helispot
- Drop Point
- Closure
- Staging Area
- Other
- Fire Station
- Bridge
- Internet Access
- Water Source
- Completed Burnout
- Completed Dozer Line
- Completed Fuel Break
- Completed Hand Line
- Completed Road as Line
- Planned Road as Line
- Access or Improved Road
- Other
- Road Repair
- Aerial Hazard
- Fire Edge
- Contained Line
- Administrative FS Boundary
- FS Wilderness Boundary
- Wildfire Daily Fire Perimeter



9/29/2021 2048
Acres from IR
North American 1983 Datum.
Lat/Long Grid



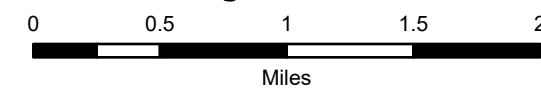
IAP Map

Schneider Springs
WA-OWF-000453

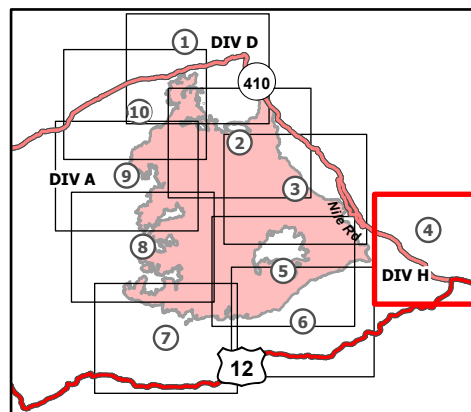
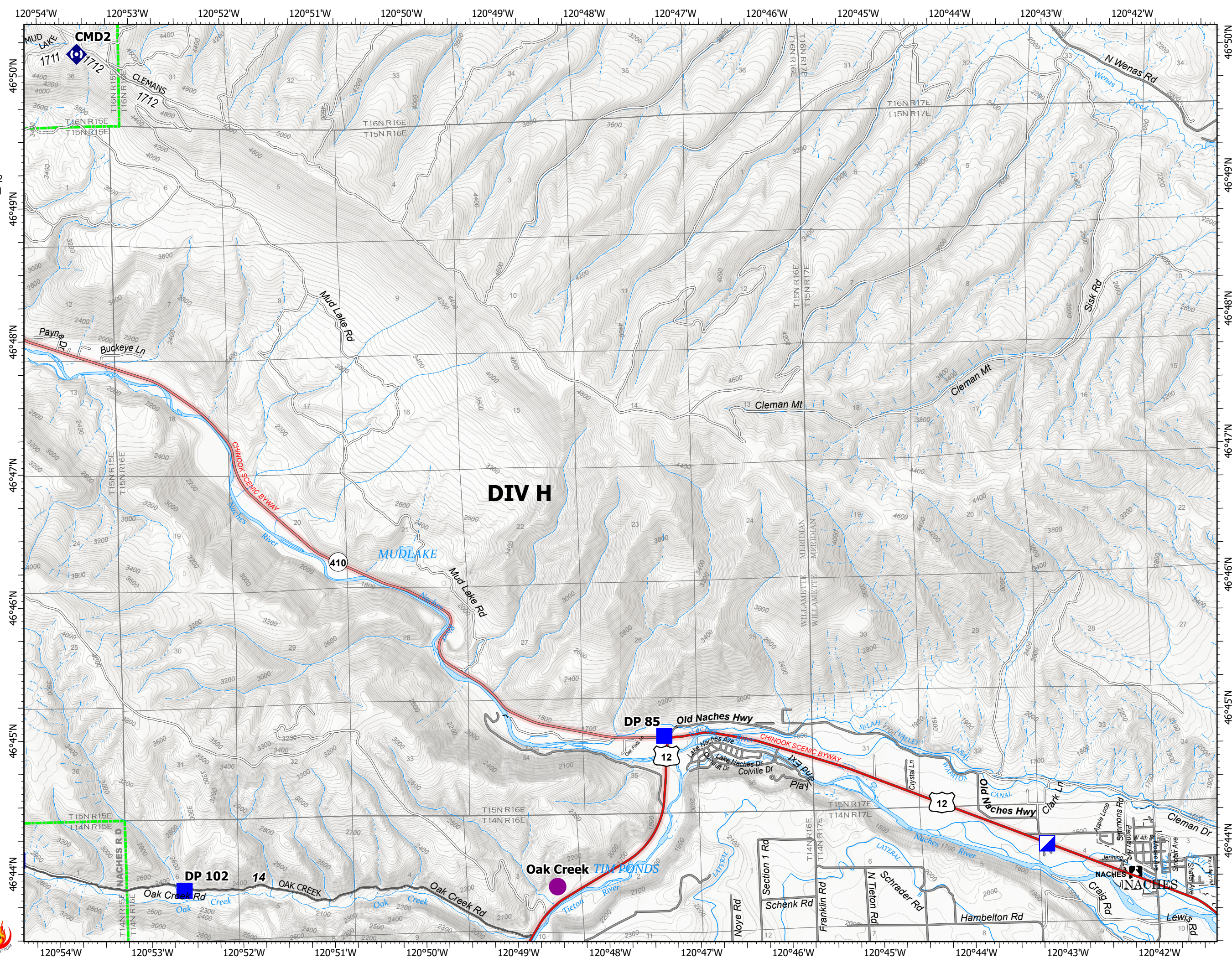
9/30/2021

107,118 acres at 9/27/2021 0700

Page 4 of 10



- Helispot
- ▣ Incident Command Post
- Drop Point
- 📶 Internet Access
- 📡 Repeater
- ▭ Administrative FS Boundary



9/29/2021 2048
Acres from IR
North American 1983 Datum.
Lat/Long Grid



IAP Map

Schneider Springs
WA-OWF-000453

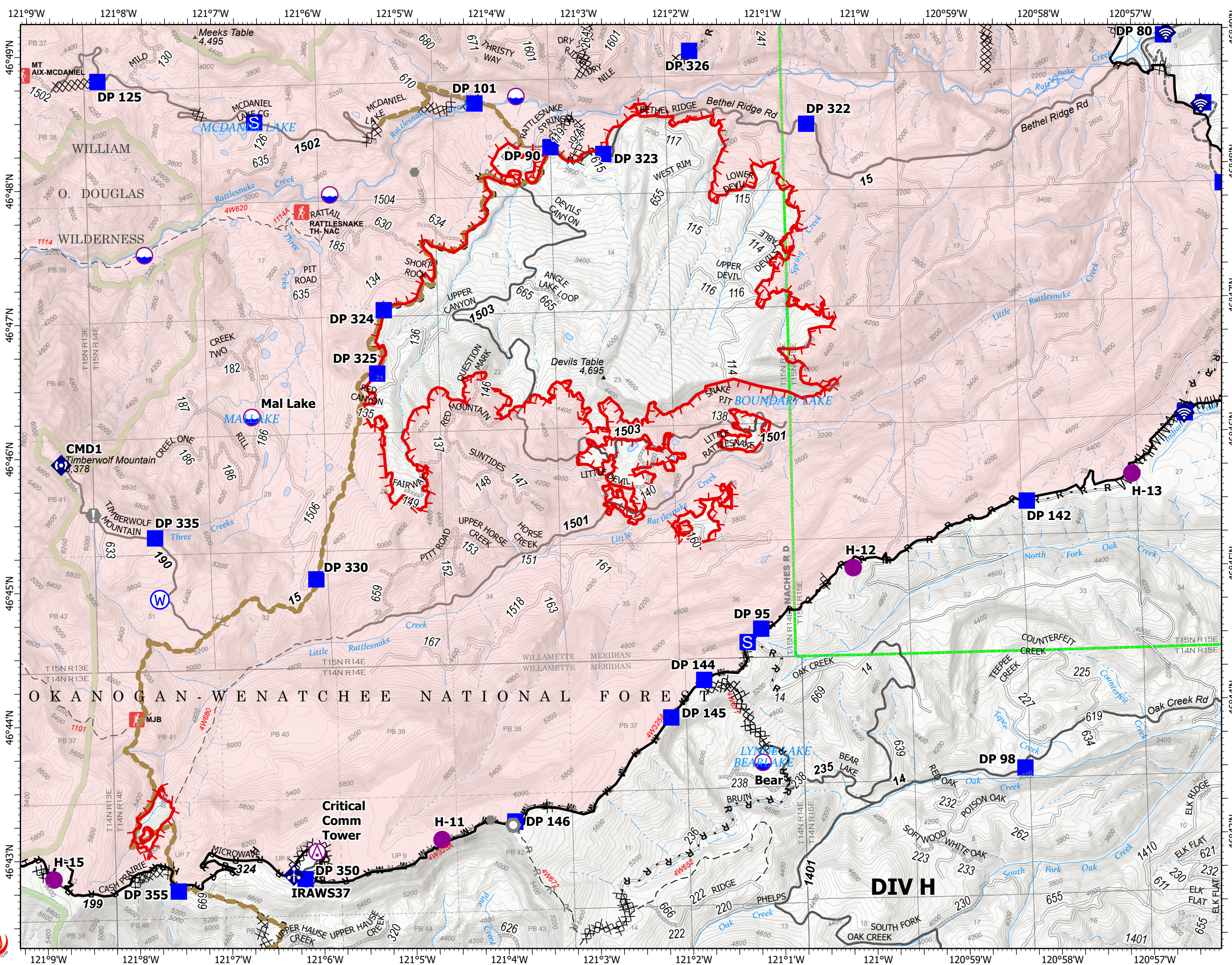
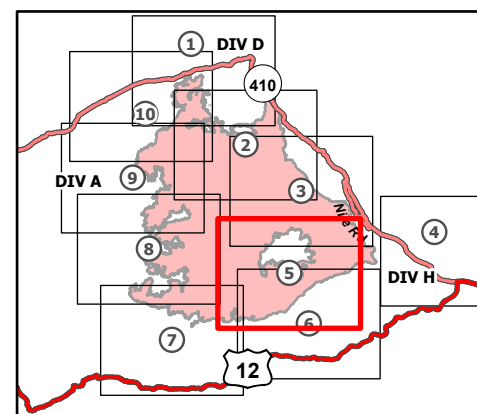
9/30/2021

107,118 acres at 9/27/2021 0700

Page 5 of 10



- Aerial Hazard
- Dip Site
- Helispot
- Drop Point
- Closure
- Staging Area
- Value at Risk
- Other
- Landmark
- Mobile Weather Unit
- Internet Access
- Repeater
- Water Source
- Completed Burnout
- Completed Dozer Line
- Completed Fuel Break
- Completed Hand Line
- Completed Mixed Construction Line
- Completed Plow Line
- Completed Road as Line
- Planned Dozer Line
- Planned Road as Line
- Other
- Road Repair
- Fire Edge
- Contained Line
- Administrative FS Boundary
- FS Wilderness Boundary
- Wildfire Daily Fire Perimeter



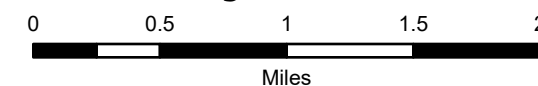
IAP Map

Schneider Springs
WA-OWF-000453

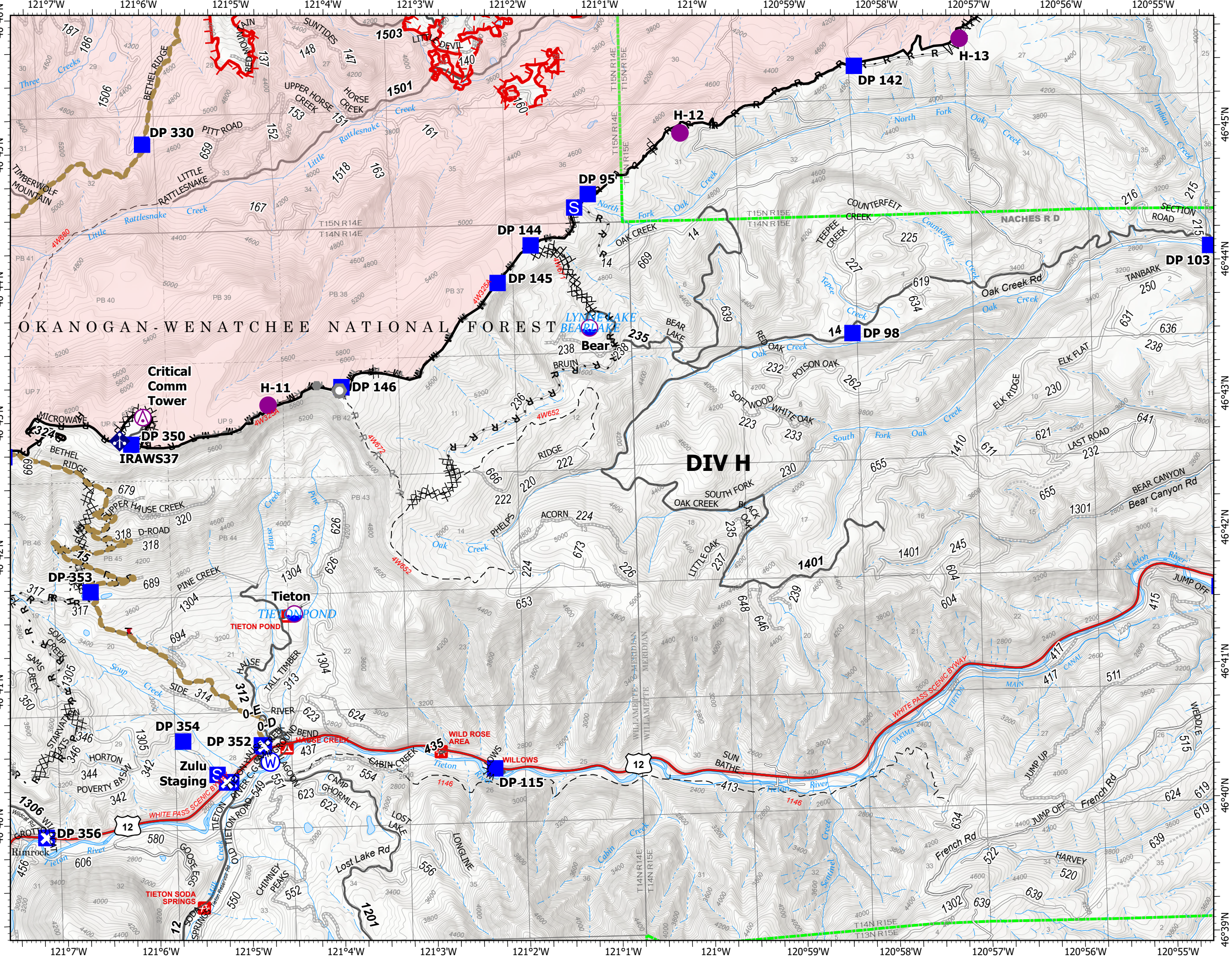
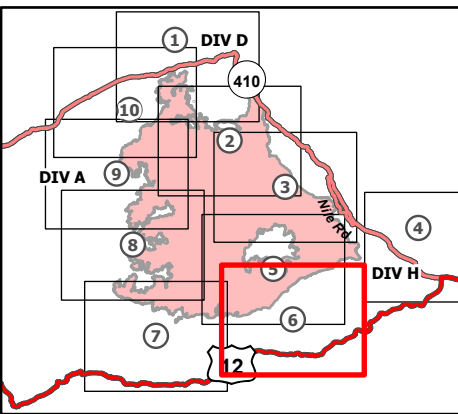
9/30/2021

107,118 acres at 9/27/2021 0700

Page 6 of 10



- ⊗ Aerial Hazard
- Dip Site
- Helispot
- Drop Point
- ⊠ Closure
- ⊡ Staging Area
- Other
- Landmark
- ⚡ Mobile Weather Unit
- ⊕ Water Source
- ⊗ Completed Dozer Line
- ⊗ Completed Fuel Break
- H Completed Hand Line
- M Completed Mixed Construction Line
- P Completed Plow Line
- R Completed Road as Line
- ⊗ Planned Dozer Line
- H Planned Hand Line
- R Planned Road as Line
- - - Fence
- - - Other
- Road Repair
- ▬ Fire Edge
- Contained Line
- Administrative FS Boundary
- Wildfire Daily Fire Perimeter



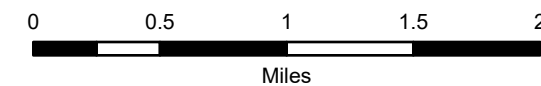
IAP Map

Schneider Springs
WA-OWF-000453

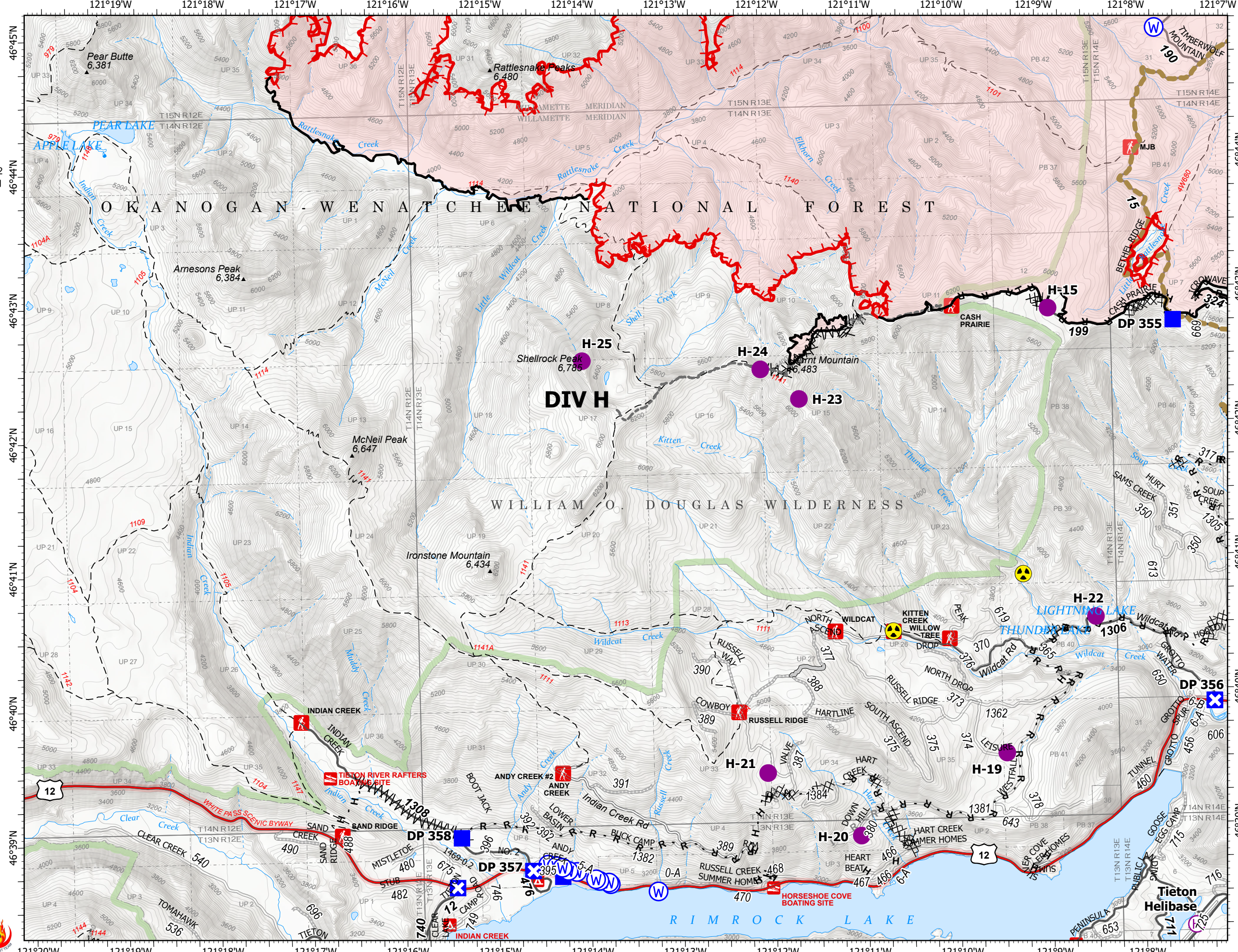
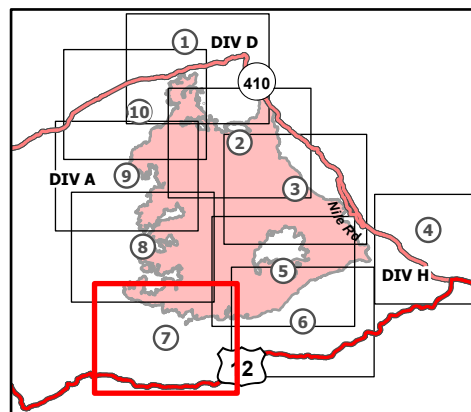
9/30/2021

107,118 acres at 9/27/2021 0700

Page 7 of 10



- Helispot
- H Helibase
- Drop Point
- X Closure
- ☠ Hazard
- W Water Source
- Completed Dozer Line
- Completed Fuel Break
- Completed Hand Line
- Completed Road as Line
- Planned Dozer Line
- Planned Road as Line
- Access or Improved Road
- Other
- Road Repair
- Fire Edge
- Contained Line
- Administrative FS Boundary
- FS Wilderness Boundary
- Wildfire Daily Fire Perimeter



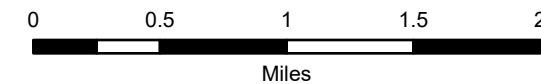
IAP Map

Schneider Springs
WA-OWF-000453

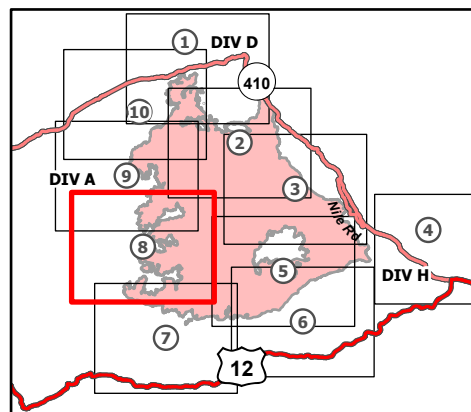
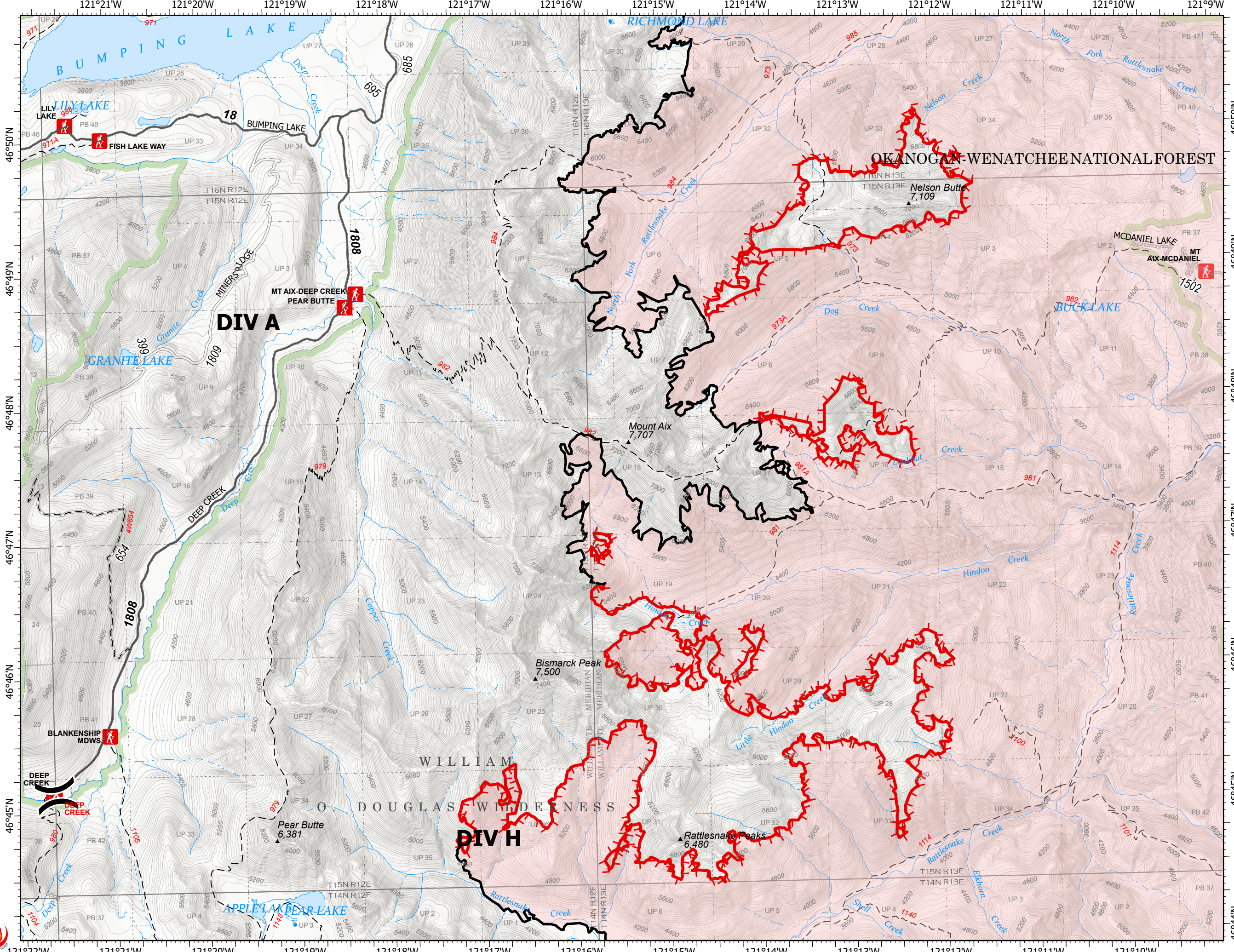
9/30/2021

107,118 acres at 9/27/2021 0700

Page 8 of 10



- (X) Division Break
- ◆ Repeater
- ≡ Completed Fuel Break
- ▬ Fire Edge
- ▬ Contained Line
- ▬ Administrative FS Boundary
- ▬ FS Wilderness Boundary
- ▬ Wildfire Daily Fire Perimeter



9/29/2021 2050
Acres from IR
North American 1983 Datum.
Lat/Long Grid



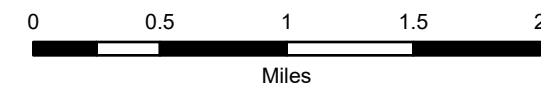
IAP Map

Schneider Springs
WA-OWF-000453

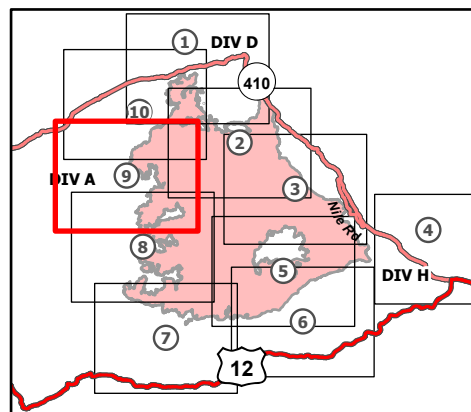
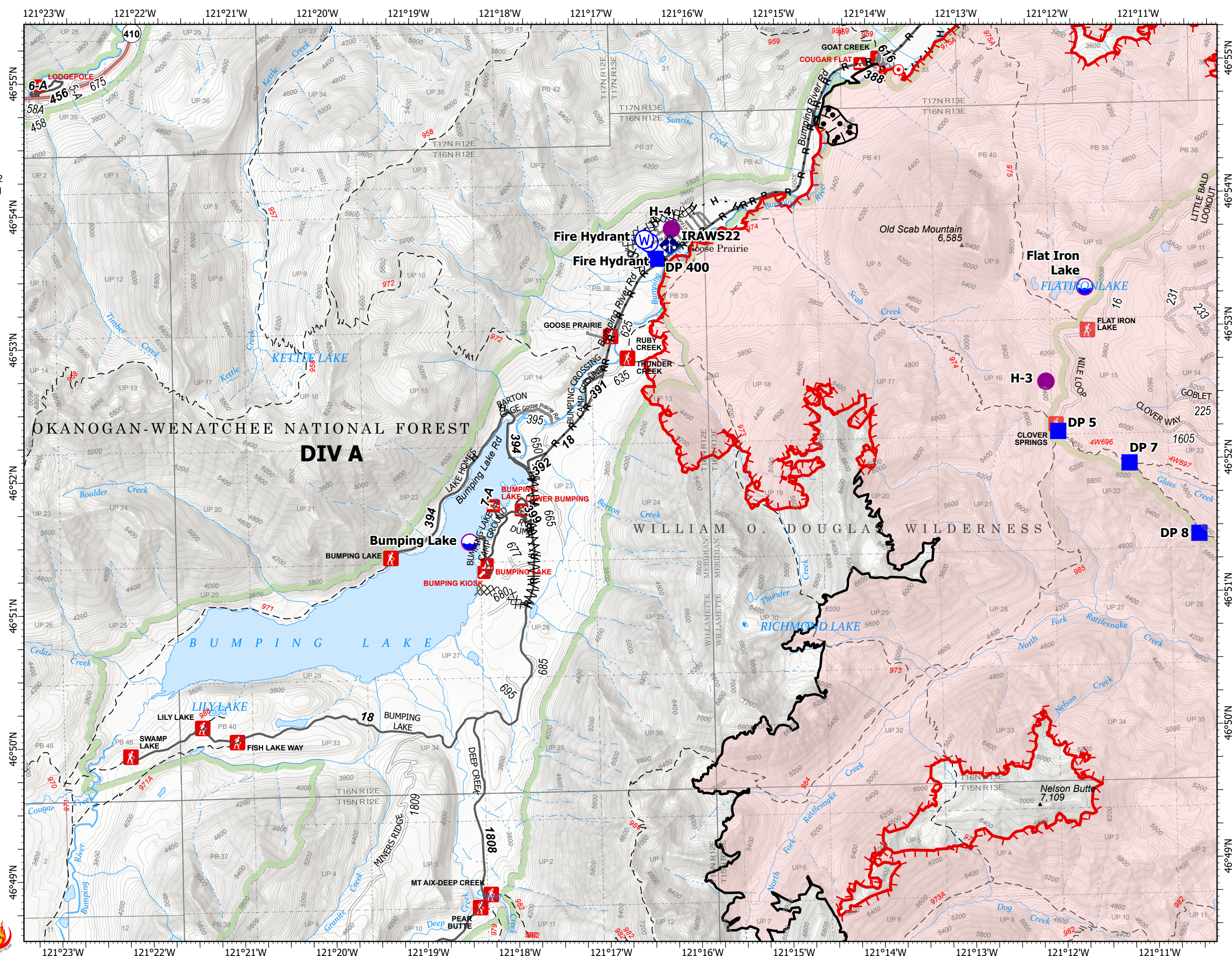
9/30/2021

107,118 acres at 9/27/2021 0700

Page 9 of 10



- Dip Site
- Helispot
- Drop Point
- Hot Spot - Spot Fire
- Value at Risk
- Other
- Bridge
- Mobile Weather Unit
- Water Source
- Completed Burnout
- Completed Dozer Line
- Completed Fuel Break
- Completed Hand Line
- Completed Road as Line
- Planned Hand Line
- Fire Edge
- Contained Line
- Administrative FS Boundary
- FS Wilderness Boundary
- Wildfire Daily Fire Perimeter



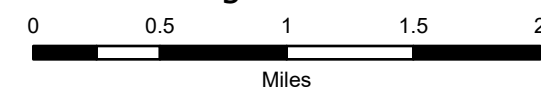
IAP Map

Schneider Springs
WA-OWF-000453

9/30/2021

107,118 acres at 9/27/2021 0700

Page 10 of 10



- Dip Site
- Helisport
- Division Break
- Drop Point
- Closure
- Staging Area
- Lookout
- Hot Spot - Spot Fire
- Value at Risk
- Other
- Bridge
- Mobile Weather Unit
- Water Source
- Completed Burnout
- Completed Dozer Line
- Completed Hand Line
- Completed Road as Line
- Planned Hand Line
- Planned Mixed Construction Line
- Planned Road as Line
- Fire Edge
- Contained Line
- Administrative FS Boundary
- FS Wilderness Boundary
- Wildfire Daily Fire Perimeter

