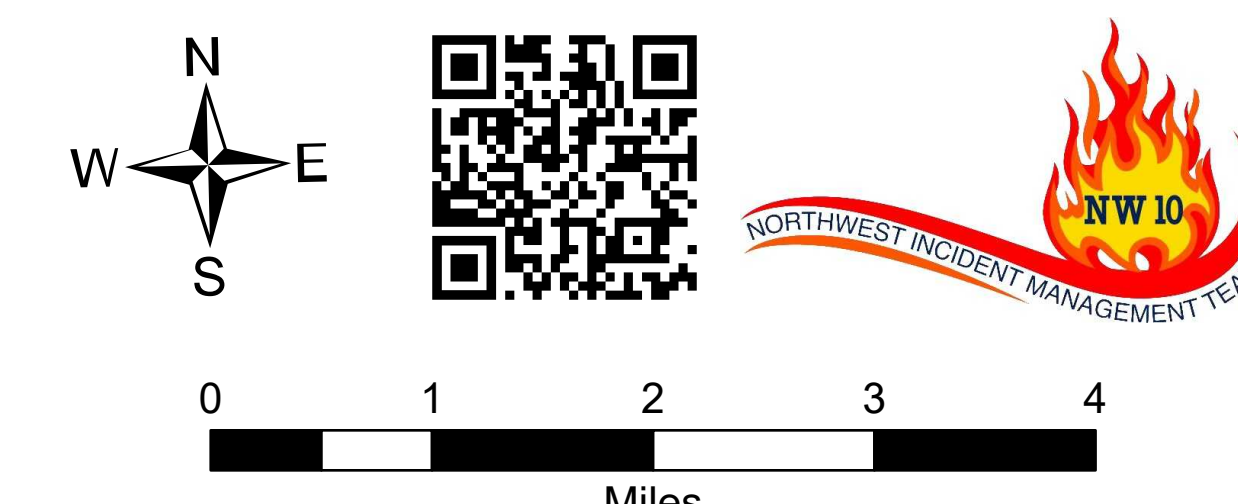


Briefing Map

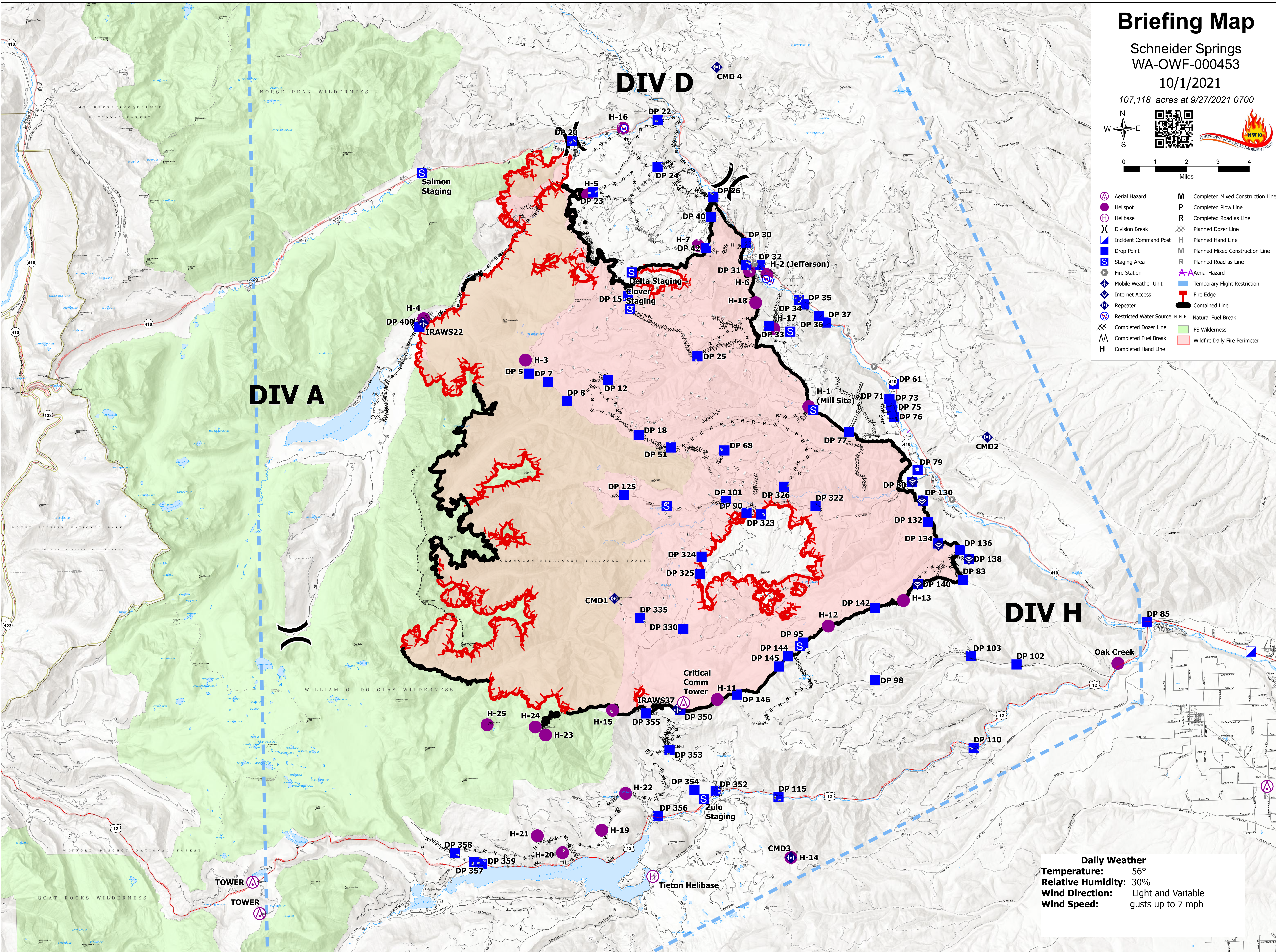
Schneider Springs
WA-OWF-000453

10/1/2021

107,118 acres at 9/27/2021 0700



- | | | | |
|--|-------------------------|--|-----------------------------------|
| | Aerial Hazard | | Completed Mixed Construction Line |
| | Helispot | | Completed Plow Line |
| | Helibase | | Completed Road as Line |
| | Division Break | | Planned Dozer Line |
| | Incident Command Post | | Planned Hand Line |
| | Drop Point | | Planned Mixed Construction Line |
| | Staging Area | | Planned Road as Line |
| | Fire Station | | Aerial Hazard |
| | Mobile Weather Unit | | Temporary Flight Restriction |
| | Internet Access | | Fire Edge |
| | Repeater | | Contained Line |
| | Restricted Water Source | | Natural Fuel Break |
| | Completed Dozer Line | | FS Wilderness |
| | Completed Fuel Break | | Wildfire Daily Fire Perimeter |
| | Completed Hand Line | | |



Daily Weather
Temperature: 56°
Relative Humidity: 30%
Wind Direction: Light and Variable
Wind Speed: gusts up to 7 mph