

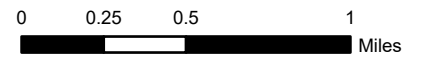
Repair Tiles

Page 2

Schneider
Springs
WA-
K. Russell
10/4/2021 2005



North American 1983 Datum.
LatLong Grid
107,322 acres at 10/2/2021 0700



Warming Hut

Delta Staging

Clover Staging

H-2 (Jefferson)

H-18

DP 33

H-17

DP 36

DP 37

DP 25

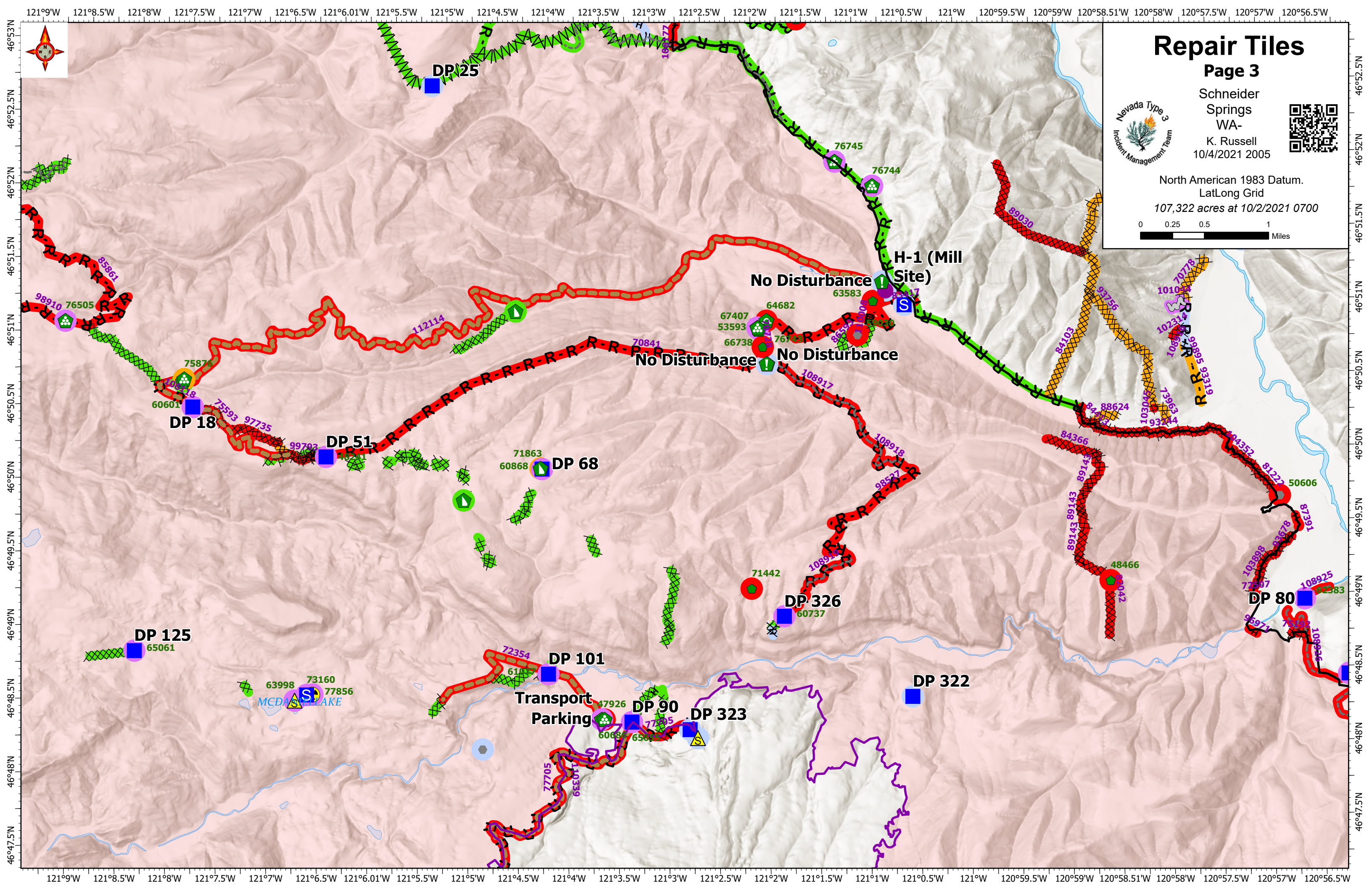
DP 7

H-1 (Mill Site)

No Disturbance

No Disturbance

No Disturbance



Repair Tiles

Page 3

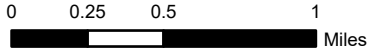


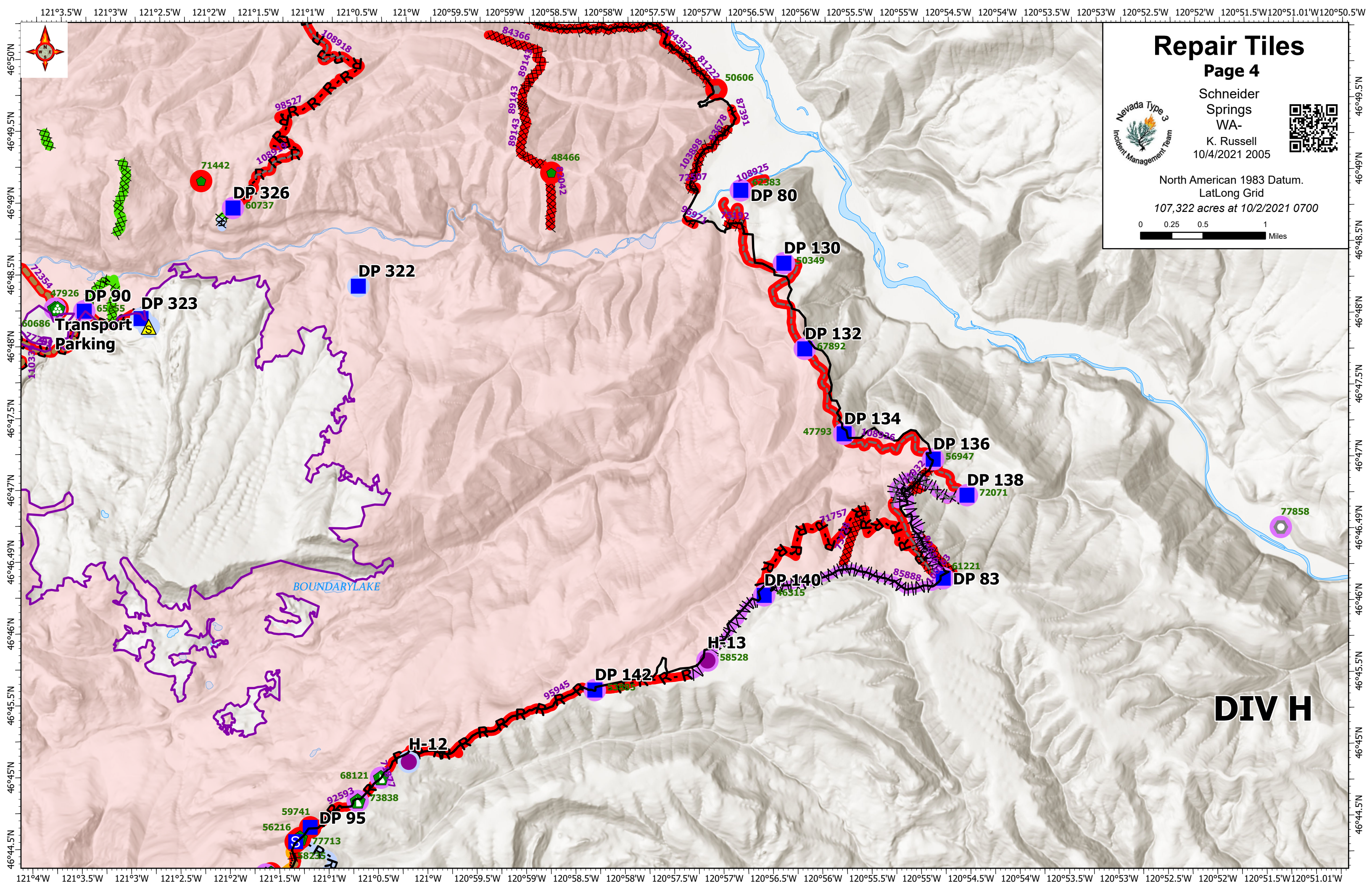
Schneider
Springs
WA-
K. Russell
10/4/2021 2005



North American 1983 Datum.
LatLong Grid

107,322 acres at 10/2/2021 0700





Repair Tiles

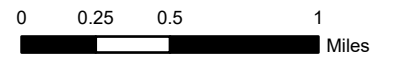
Page 4

Schneider Springs
WA-

K. Russell
10/4/2021 2005

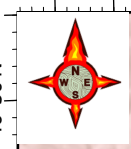


North American 1983 Datum.
LatLong Grid
107,322 acres at 10/2/2021 0700



DIV H

BOUNDARY LAKE

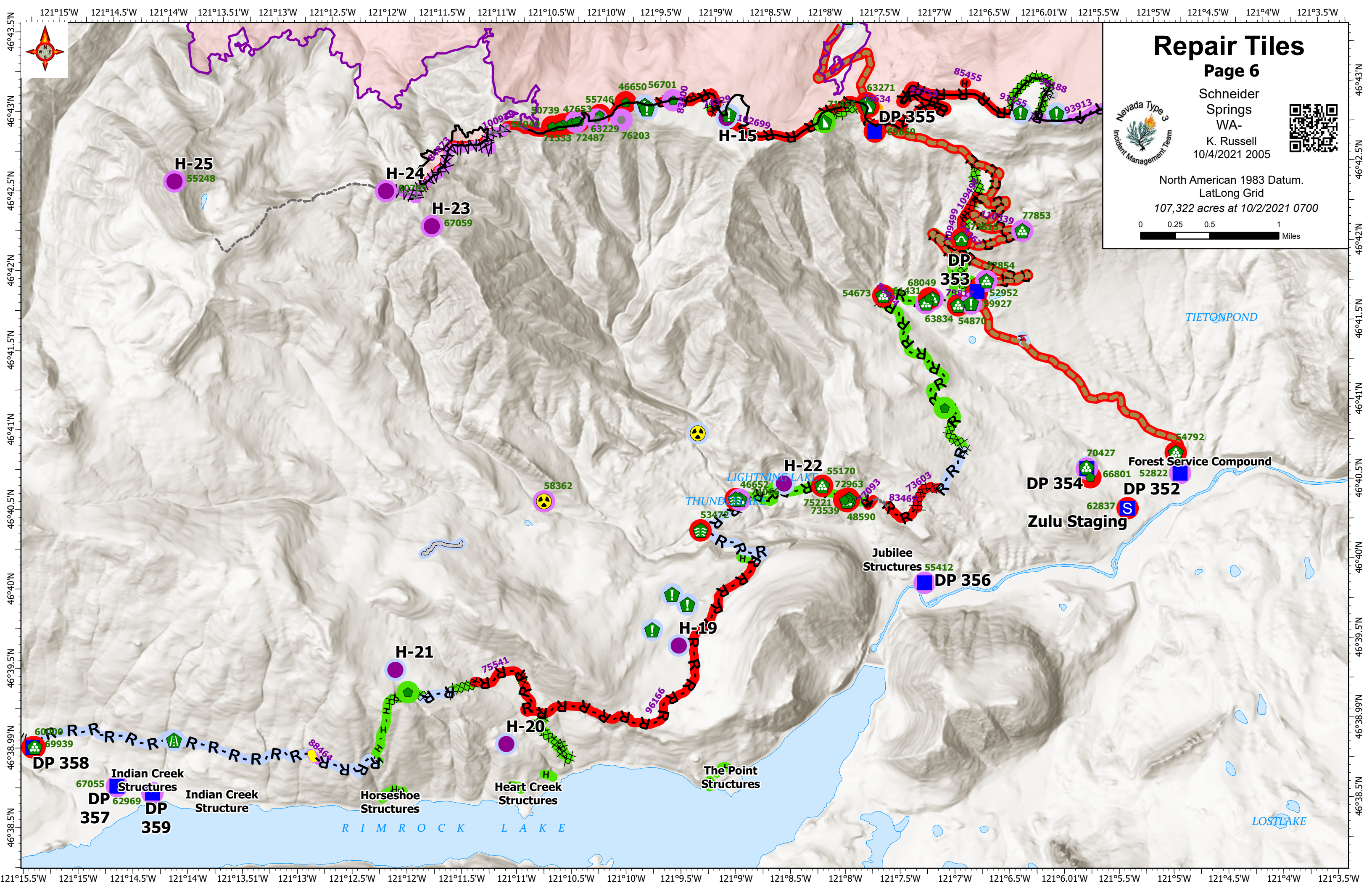


121°3.5'W 121°3'W 121°2.5'W 121°2'W 121°1.5'W 121°1'W 121°0.5'W 121°W 120°59.5'W 120°59'W 120°58.5'W 120°58'W 120°57.5'W 120°57'W 120°56.5'W 120°56'W 120°55.5'W 120°55'W 120°54.5'W 120°54'W 120°53.5'W 120°53'W 120°52.5'W 120°52'W 120°51.5'W 120°51.01'W 120°50.5'W

121°4'W 121°3.5'W 121°3'W 121°2.5'W 121°2'W 121°1.5'W 121°1'W 121°0.5'W 121°W 120°59.5'W 120°59'W 120°58.5'W 120°58'W 120°57.5'W 120°57'W 120°56.5'W 120°56'W 120°55.5'W 120°55'W 120°54.5'W 120°54'W 120°53.5'W 120°53'W 120°52.5'W 120°52'W 120°51.5'W 120°51.01'W

46°50'N
46°49.5'N
46°49'N
46°48.5'N
46°48'N
46°47.5'N
46°47'N
46°46.5'N
46°46'N
46°45.5'N
46°45'N
46°44.5'N

46°49.5'N
46°49'N
46°48.5'N
46°48'N
46°47.5'N
46°47'N
46°46.5'N
46°46'N
46°45.5'N
46°45'N
46°44.5'N



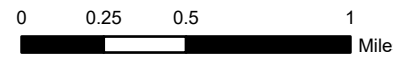
Repair Tiles

Page 6

Schneider
Springs
WA-
K. Russell
10/4/2021 2005



North American 1983 Datum.
LatLong Grid
107,322 acres at 10/2/2021 0700





Repair Tiles

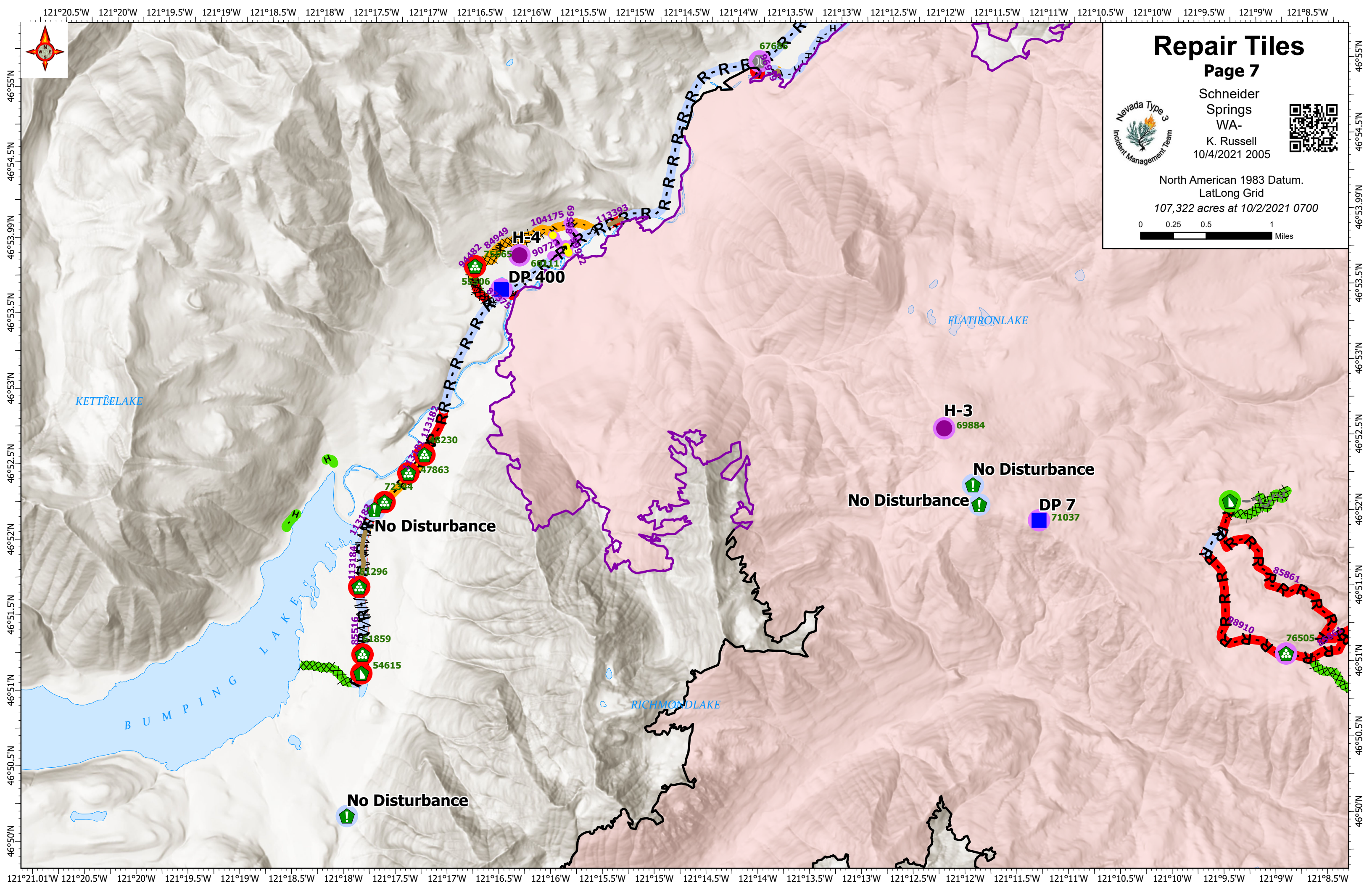
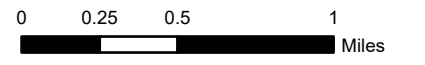
Page 7



Schneider
Springs
WA-
K. Russell
10/4/2021 2005



North American 1983 Datum.
LatLong Grid
107,322 acres at 10/2/2021 0700



KETT LAKE

BUMPING LAKE

FLATIRON LAKE

RICHMOND LAKE

H-4

DP-400

H-3

69884

No Disturbance

No Disturbance

No Disturbance

DP 7

71037

No Disturbance

